

State of Vermont

2003

**Employment
and Wages**

**Annual
Averages by
Type of Ownership
Industry, Location,
and Size**

***Labor Market
Information Section***



Current and Historical information are available at:

www.vtLmi.info/industry.cfm

The State of Vermont is an Equal Opportunity/Affirmative Action Employer. Applications from women, individuals with disabilities, and people from diverse cultural backgrounds are encouraged. Auxiliary aids and services are available upon request to individuals with disabilities. 711 (TTY/Relay Service) or (802) 828-4203 TDD (Department of Employment & Training).

Employment and Wages

Covered by Unemployment Insurance

2003

July 2004

Vermont Department of Employment & Training

Anne V. Ginevan, Commissioner

P.O. Box 488

Montpelier, VT 05602

Telephone (802)828-4202

Contents

Page

Introduction

1 Change in Industry Classification Systems

2 Summary

Employment Conditions

3 Employment & Wages 1994-2003

5 Vermont

9 County

11 Town

2003 Statistics

15 List of Tables

16 Industry Groups

22 County and Town

29 County and Industry

45 Size Class by Industry

47 Size Class by County

Reference

49 Explanation of Terms

51 Industry Titles

Introduction

This publication is prepared by the Labor Market Information Section of the Department of Employment and Training in cooperation with the U. S. Department of Labor, Bureau of Labor Statistics and presents 2003 annual data on employment and wages based on the 2002 North American Industry Classification System (NAICS). Each employer is assigned an appropriate NAICS code which provides the foundation for the following aggregate tables.

The information in this publication is based upon data employers provide to the Department of Employment and Training in conformance with state and federal unemployment insurance laws. The data for both private and public workers are compiled for the Covered Employment and Wages program from the quarterly tax reports submitted to the Department by employers subject to State Unemployment Insurance (UI) laws and Federal Employees (UCFE) program.

To insure quality in the data, the Department edits, processes, and analyzes the data using the Quarterly Census of Employment and Wages (f/k/a WIN-202) data processing system, which includes a series of computer editing programs and data files. This is done on a quarterly basis during the year and the annual data is compiled upon completion of the fourth quarter.

After the information is assimilated, it is utilized in various Department publications as well as shared with the Bureau of Labor Statistics in Washington D.C.

The sections in this publication are:

- Employment Conditions

- 2003 Statistics

- Reference

It is important to understand the terms used in this publication as they have definitions that can be very different from their common usage. The “Explanation of Terms” in the reference section contains definitions and explanations of the terminology used in this publication. If you have any questions about this publication, please contact Chuck Barnum at (802) 828-4319 or Lorene Mercier (802) 828-4318.

Industry Classification Systems

Beginning with the release of the annual data for 2001, the Quarterly Census of Employment and Wages (QCEW) (f/k/a ES-202) Program switched from the Standard Industrial Classification (SIC) program to the 2002 version of the North American Industry Classification System (NAICS) as the basis for the assignment and tabulation of economic data by industry. NAICS is the product of a cooperative effort on the part of the statistical agencies of the United States, Canada, and Mexico. **Due to differences in NAICS and SIC structures, data is not comparable to the SIC-based data of earlier years.** For historical comparisons back to 1988, the historical SIC based data was converted to NAICS. It is available on the VT LMI website www.vtLmi.info.

NAICS utilizes a production-oriented approach to categorize economic units. Units with similar production processes are classified in the same industry. NAICS focuses on how products and services are created, as opposed to the SIC focus on what is produced. This approach yields significantly different industrial groupings than those produced by the SIC approach.

Users will be able to analyze this data more comprehensively with these new NAICS industrial groupings which better reflects the workings of the U.S. economy. For example, a new industry sector called Information brings together units that turn information into a commodity with units that distribute the commodity and units that provide information services. The major components of Information are publishing, broadcasting, telecommunications, information services, and data processing. Under the SIC system, these units were spread across the manufacturing, communications, business services, and amusement services groups. Another new sector of interest is Professional, Scientific, and Technical Services. This sector is comprised of establishments engaged in activities where human capital is the major input.

For more information on NAICS, please visit the Bureau of Labor Statistics website www.bls.gov/bls/naics.htm.

Summary

The Vermont economy experienced its second year of job losses. The 0.4 percent employment decrease represented a loss of 1,155 jobs, reducing the total average employment to 294,288.

In private industry, all goods producing sectors had job losses, led by a 7.9 percent decrease (3,211 jobs) in manufacturing. Service providing jobs slightly increased by 0.4 percent, with the largest increase in education & health services, which grew by 1,849 jobs for a 3.9 percent increase. Government grew by 1.7 percent due to growth at the federal, state and local levels.

In 2003, almost \$9.5 billion was paid to workers, up 3.0 percent from the previous year. This increase in total wages accounted for a 3.4 percent increase in the average annual wage, which grew by \$1,049 to \$32,090.

Employment continued to be concentrated in three counties: Chittenden, Washington, and Rutland. Combined, these three counties accounted for more than 50 percent of total employment. Grand Isle and Essex Counties claimed the lowest levels of employment which when combined resulted in less than one percent of total employment. Chittenden continued to dominate all other counties in terms of the largest share of total annual wages and was the only county to exceed the Vermont average annual wage of \$32,090 with an average wage of \$37,432. Grand Isle reported the lowest average annual wage of \$22,396.

There are seven towns in Vermont with employment levels greater than 10,000. They are Burlington, South Burlington, Essex, Rutland City, Brattleboro, Bennington, and Williston. Together, these towns accounted for 36.4 percent of the total Vermont employment.

There were 52 towns with employment of 1,000 or more. Out of the 52 towns, 29 had employment decreases and 23 had increases. Of the top ten towns with employment of 1,000 or more, Essex had the highest annual average wage of \$50,408 followed by Burlington with \$37,740. The annual average wage of the top ten towns exceeded the average annual wage for Vermont. Dover reported the lowest annual wage with \$20,295 followed by Wilmington with \$21,587.

Table 1

**Vermont Annual Average Employment
1994 - 2003**

Industry - Ownership/Sector	1994	1995	1996	1997	1998	1999	2000	2001	2002	2003
Total Covered - all ownerships	259,373	266,028	270,369	274,355	280,294	288,202	296,468	298,168	295,443	294,288
Private ownership	216,630	222,852	227,053	230,707	236,259	243,018	249,122	250,106	246,527	244,531
Goods Producing	56,028	57,860	58,943	59,810	61,563	63,229	64,803	63,918	58,576	55,811
Agriculture, forestry, fishing and hunting	1,641	1,789	1,801	1,872	1,960	2,114	2,206	2,256	2,156	2,174
Mining	800	816	842	812	853	894	938	931	829	772
Construction	11,766	12,534	12,582	12,915	13,691	14,480	14,941	15,218	14,894	15,378
Manufacturing	41,821	42,720	43,718	44,210	45,059	45,741	46,719	45,514	40,697	37,486
Durable Goods	28,505	29,197	30,156	31,147	32,107	32,746	34,031	33,467	29,388	26,741
Non-Durable Goods	13,316	13,523	13,561	13,064	12,952	12,995	12,687	12,047	11,309	10,745
Service Providing	160,602	164,992	168,110	170,897	174,696	179,789	184,319	186,188	187,951	188,720
Wholesale trade	9,842	9,864	9,750	9,676	9,559	9,685	9,946	10,074	10,028	10,256
Retail trade	34,835	35,865	36,513	37,161	37,594	38,597	39,676	39,913	40,104	39,519
Transportation and warehousing	5,673	6,121	6,381	6,419	6,585	6,709	6,794	6,722	6,772	6,574
Utilities	1,993	1,921	1,868	1,869	1,852	1,753	1,692	1,653	1,710	1,726
Information	5,840	5,968	6,215	6,238	6,424	6,648	6,854	6,685	6,653	6,495
Financial Activities	12,557	12,599	12,464	12,529	12,662	12,981	12,664	12,887	12,904	12,989
Professional and Business Services	15,758	16,105	16,946	17,862	19,298	20,448	20,842	20,778	20,376	20,394
Education and Health Services	35,984	37,625	38,229	38,776	39,757	41,236	42,823	44,273	46,850	48,698
Leisure and Hospitality	30,104	30,844	31,319	31,647	32,026	32,534	33,009	32,931	33,059	32,725
Other services, except public administration	8,016	8,080	8,424	8,722	8,939	9,196	10,018	10,270	9,495	9,343
Government	42,743	43,176	43,316	43,648	44,035	45,184	47,345	48,062	48,916	49,757
Federal Government	5,516	5,516	5,481	5,403	5,456	5,605	6,064	5,772	5,930	6,250
State government	13,496	13,689	13,338	13,493	13,385	13,737	14,661	15,163	15,028	15,310
Local government	23,732	23,971	24,497	24,752	25,194	25,841	26,620	27,127	27,959	28,198

Table 2

**Vermont Annual Average Wage
1994 - 2003**

Industry - Ownership/Sector	1994	1995	1996	1997	1998	1999	2000	2001	2002	2003
Total Covered - all ownerships	22,963	23,573	24,479	25,506	26,624	27,589	28,925	30,239	31,041	32,090
Private ownership	22,512	23,122	24,035	25,021	26,209	27,235	28,704	29,920	30,613	31,571
Goods Producing	29,002	29,828	31,173	32,564	33,827	34,914	37,120	38,568	39,455	40,344
Agriculture, forestry, fishing and hunting	16,872	16,560	17,414	17,977	18,619	19,010	19,523	20,617	21,176	21,662
Mining	31,098	31,438	33,214	34,900	35,336	35,824	35,350	35,152	39,056	41,314
Construction	23,469	24,479	25,581	26,552	27,891	29,401	31,356	32,800	32,821	33,388
Manufacturing	30,995	31,922	33,310	34,895	36,264	37,377	39,830	41,455	42,860	44,261
Durable Goods	33,516	34,551	36,200	37,469	38,844	39,869	42,195	44,453	46,324	47,773
Non-Durable Goods	25,598	26,246	26,885	28,757	29,866	31,096	33,486	33,129	33,858	35,521
Service Providing	20,248	20,770	21,533	22,382	23,525	24,534	25,745	26,951	27,858	28,977
Wholesale trade	29,355	30,301	31,824	33,076	34,370	36,274	38,288	41,187	42,756	44,235
Retail trade	16,279	16,542	16,888	17,402	18,230	18,996	19,804	20,873	21,612	22,390
Transportation and warehousing	23,335	24,198	25,075	26,194	26,898	28,041	30,543	30,176	30,601	31,636
Utilities	44,084	47,154	49,335	50,737	56,030	58,134	60,971	64,651	70,366	68,710
Information	25,925	26,571	27,302	28,557	30,467	31,159	33,163	35,402	35,786	37,227
Financial Activities	27,280	28,555	30,572	32,235	34,267	35,334	37,866	39,996	41,590	44,513
Professional and Business Services	23,967	25,197	26,789	28,017	30,207	31,333	33,378	35,543	36,494	38,298
Education and Health Services	22,557	23,575	24,049	24,888	25,681	27,040	28,088	28,941	29,774	30,453
Leisure and Hospitality	12,016	11,266	11,640	12,228	12,802	13,248	13,842	14,211	14,689	15,223
Other services, except public administration	16,299	17,009	18,062	18,438	19,166	19,986	20,552	21,455	22,538	23,677
Government	25,249	25,905	26,806	28,067	28,852	29,493	30,091	31,897	33,198	34,637
Federal Government	34,003	34,754	36,808	39,148	40,158	39,385	40,716	43,868	46,201	47,621
State government	26,528	27,275	28,928	30,557	32,222	33,118	33,255	35,725	38,072	39,573
Local government	22,488	23,086	23,414	24,292	24,612	25,421	25,927	27,210	27,821	29,080

Table 3

Employment Growth 1994 - 2003

Annual Number Change

Industry - Ownership/Sector	1994	1995	1996	1997	1998	1999	2000	2001	2002	2003
Total Covered - all ownerships	13,283	6,655	4,341	3,986	5,939	7,908	8,266	1,700	-2,725	-1,155
Private ownership	12,399	6,222	4,201	3,654	5,552	6,759	6,104	984	-3,579	-1,996
Goods Producing	1,323	1,832	1,083	867	1,753	1,666	1,574	-885	-5,342	-2,765
Agriculture, forestry, fishing and hunting	65	148	12	71	88	154	92	49	-99	18
Mining	-22	16	26	-30	41	41	44	-7	-103	-57
Construction	544	768	48	333	776	789	461	277	-324	484
Manufacturing	736	899	998	492	849	682	978	-1,205	-4,817	-3,211
Durable Goods	-408	692	959	991	960	639	1,285	-565	-4,079	-2,647
Non-Durable Goods	1,144	207	38	-497	-112	43	-308	-640	-738	-564
Service Providing	11,076	4,390	3,118	2,787	3,799	5,093	4,530	1,869	1,763	769
Wholesale trade	742	22	-114	-74	-117	126	261	128	-46	228
Retail trade	1,958	1,030	648	648	433	1,003	1,079	236	192	-585
Transportation and warehousing	576	448	260	38	166	124	85	-72	50	-198
Utilities	-36	-72	-53	1	-17	-99	-62	-38	57	16
Information	298	128	247	23	186	224	206	-169	-31	-158
Financial Activities	207	42	-135	65	133	319	-317	224	16	85
Professional and Business Services	2,021	347	841	916	1,436	1,150	394	-64	-403	18
Education and Health Services	2,884	1,641	604	547	981	1,479	1,587	1,451	2,576	1,848
Leisure and Hospitality	1,768	740	475	328	379	508	475	-78	128	-334
Other services, except public administration	658	64	344	298	217	257	822	252	-775	-152
Government	884	433	140	332	387	1,149	2,161	716	855	841
Federal Government	28	0	-35	-78	53	149	459	-292	158	320
State government	-48	193	-351	155	-108	352	924	501	-135	282
Local government	904	239	526	255	442	647	779	507	832	239

Table 4

Employment Growth 1994 - 2003

Annual Percent Change

Industry - Ownership/Sector	1994	1995	1996	1997	1998	1999	2000	2001	2002	2003
Total Covered - all ownerships	5.4	2.6	1.6	1.5	2.2	2.8	2.9	0.6	-0.9	-0.4
Private ownership	6.1	2.9	1.9	1.6	2.4	2.9	2.5	0.4	-1.4	-0.8
Goods Producing	2.4	3.3	1.9	1.5	2.9	2.7	2.5	-1.4	-8.4	-4.7
Agriculture, forestry, fishing and hunting	4.1	9.0	0.7	3.9	4.7	7.9	4.4	2.2	-4.4	0.8
Mining	-2.7	2.0	3.2	-3.6	5.0	4.8	4.9	-0.7	-11.0	-6.8
Construction	4.8	6.5	0.4	2.6	6.0	5.8	3.2	1.9	-2.1	3.2
Manufacturing	1.8	2.1	2.3	1.1	1.9	1.5	2.1	-2.6	-10.6	-7.9
Durable Goods	-1.4	2.4	3.3	3.3	3.1	2.0	3.9	-1.7	-12.2	-9.0
Non-Durable Goods	9.4	1.6	0.3	-3.7	-0.9	0.3	-2.4	-5.0	-6.1	-5.0
Service Providing	7.4	2.7	1.9	1.7	2.2	2.9	2.5	1.0	0.9	0.4
Wholesale trade	8.2	0.2	-1.2	-0.8	-1.2	1.3	2.7	1.3	-0.5	2.3
Retail trade	6.0	3.0	1.8	1.8	1.2	2.7	2.8	0.6	0.5	-1.5
Transportation and warehousing	11.3	7.9	4.2	0.6	2.6	1.9	1.3	-1.1	0.7	-2.9
Utilities	-1.8	-3.6	-2.8	0.1	-0.9	-5.3	-3.5	-2.3	3.4	1.0
Information	5.4	2.2	4.1	0.4	3.0	3.5	3.1	-2.5	-0.5	-2.4
Financial Activities	1.7	0.3	-1.1	0.5	1.1	2.5	-2.4	1.8	0.1	0.7
Professional and Business Services	14.7	2.2	5.2	5.4	8.0	6.0	1.9	-0.3	-1.9	0.1
Education and Health Services	8.7	4.6	1.6	1.4	2.5	3.7	3.8	3.4	5.8	3.9
Leisure and Hospitality	6.2	2.5	1.5	1.0	1.2	1.6	1.5	-0.2	0.4	-1.0
Other services, except public administration	8.9	0.8	4.3	3.5	2.5	2.9	8.9	2.5	-7.5	-1.6
Government	2.1	1.0	0.3	0.8	0.9	2.6	4.8	1.5	1.8	1.7
Federal Government	0.5	0.0	-0.6	-1.4	1.0	2.7	8.2	-4.8	2.7	5.4
State government	-0.4	1.4	-2.6	1.2	-0.8	2.6	6.7	3.4	-0.9	1.9
Local government	4.0	1.0	2.2	1.0	1.8	2.6	3.0	1.9	3.1	0.9

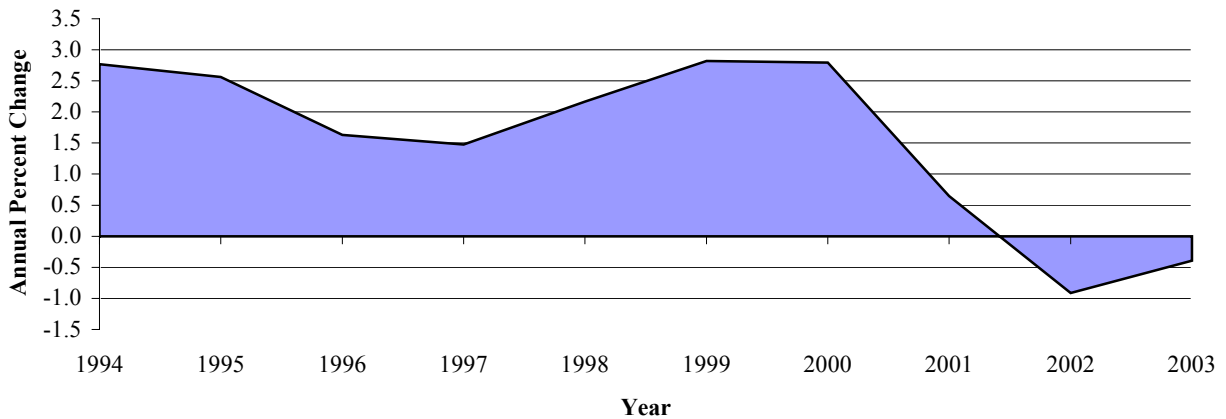
Vermont

Employment

The Vermont annual average employment experienced a minimal decrease of 0.4 per cent, representing the loss of 1,155 jobs since 2002 for a total of 294,288 jobs covered by Vermont and Federal unemployment insurance laws. This is the second consecutive year with a net job loss.

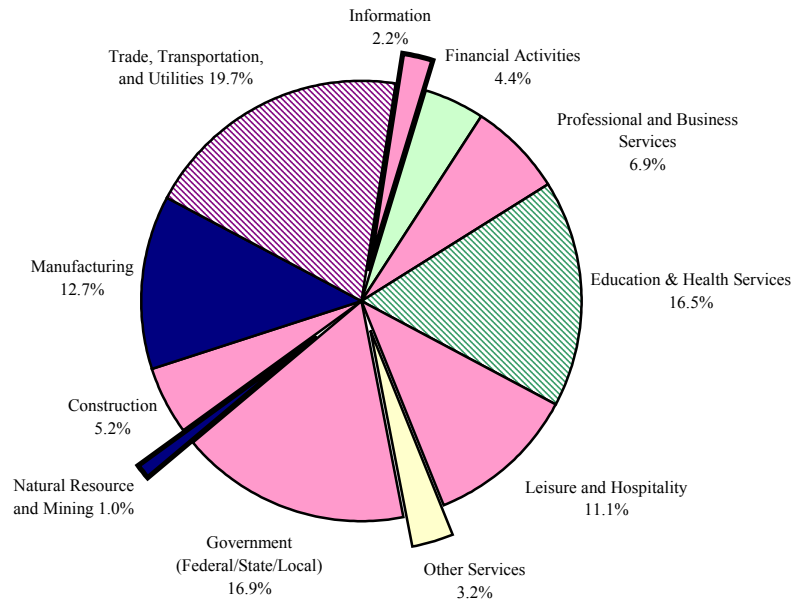
Graph 1

Total Covered Employment - Growth Rate



Graph 2

2003 Employment Distribution



Private Industry

Jobs in private industry comprise of 83.1 percent of the total Vermont employment. They are grouped by activity into goods producing and service providing industries. Goods producing activities, which account for 22.8 percent of private industry, consists of natural resources and mining, construction, and manufacturing. The rest of the activities are considered service providing. Of the service providing industries, trade, transportation, and utilities claimed the largest share with 23.7 percent of the jobs with information the smallest with 2.7 percent. Of trade, transportation, and utilities, most of the jobs (just over 49,750) are in trade, while 48,698 are in education & health services. Retail trade had a slight decrease of 1.5 percent loss in employment, while wholesale trade jobs increased by 2.3 percent.

Graph 3

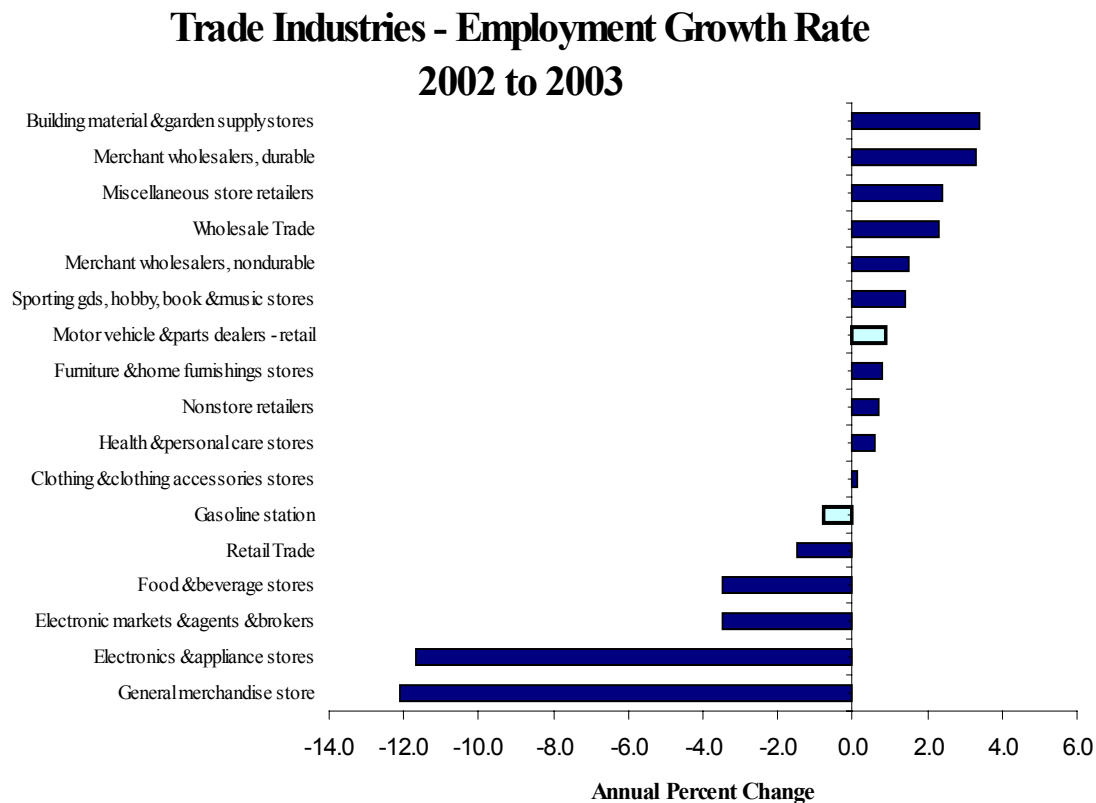


Table 5

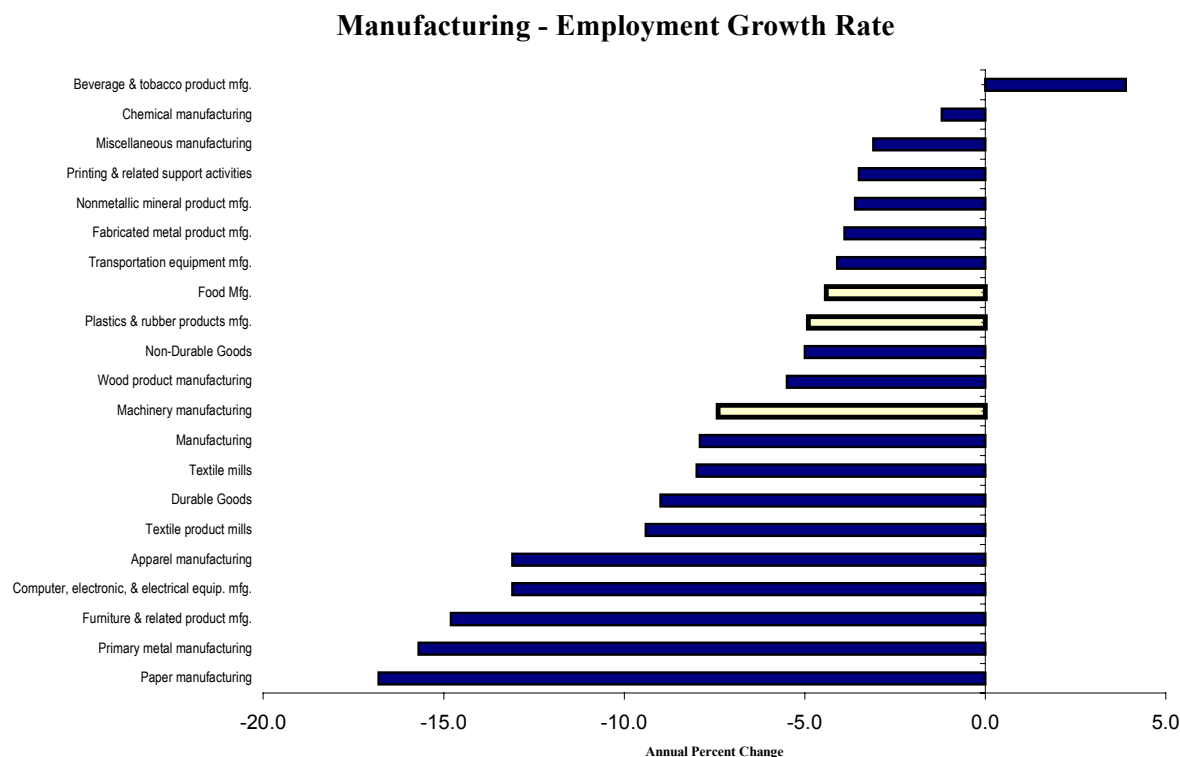
**Education & Health Services
Annual Number and Percent Change**

Industry Group	Reporting Units			Employment		
	2003	# change	% change	2003	# change	% change
Education & Health Services	2,128	76	3.6	48,698	1,848	3.8
Educational services	301	21	7.0	9,005	113	1.3
Health Care & Social Assistance	1,827	55	3.0	39,693	1,682	4.2
Ambulatory health care services	1,156	62	5.4	15,493	592	3.8
Hospitals	20	2	-10.0	10,170	234	2.3
Nursing & residential care facilities	170	5	2.9	6,585	80	1.2
Social assistance	480	11	-2.3	7,444	829	11.1

With an increase of 1,848 new jobs, education and health service sectors boasted the largest job increase in private industry. Even though both sectors showed positive growth, health care and social assistance activities accounted for the larger increase of 4.2 percent. Employees providing assistance to the disabled from household help to social assistance continue to account for much of this growth, but all industries in this sector increased in employment. Ambulatory health care services had the second largest employment increase, adding 592 employees for a 3.8 percent increase.

Manufacturing, representing 15.3 percent of employment in the private sector, suffered the greatest losses when compared to last year. There were 3,211 fewer employees in manufacturing in 2003 than in 2002, for a 7.9 percent decrease. All durable goods and manufacturing industries lost jobs, with large layoffs and plant closings affecting virtually every aspect of the industries throughout the state. The once thriving machine industries of southeastern Vermont, the paper mills and furniture manufacturers of the northeast, and the computer and electronics manufacturing industries statewide continue to lose jobs.

Graph 4



Government

Government represents 16.9 percent of the total Vermont employment grew by 1.7 percent from 2002. Federal government jobs increased by 5.4 percent, mostly due to the continued buildup of personnel in airports, border crossings, and support functions. State government employment increased by 1.9 percent, and local government grew by 0.9 percent.

Table 6

Government Employment and Wage Changes

2002 - 2003

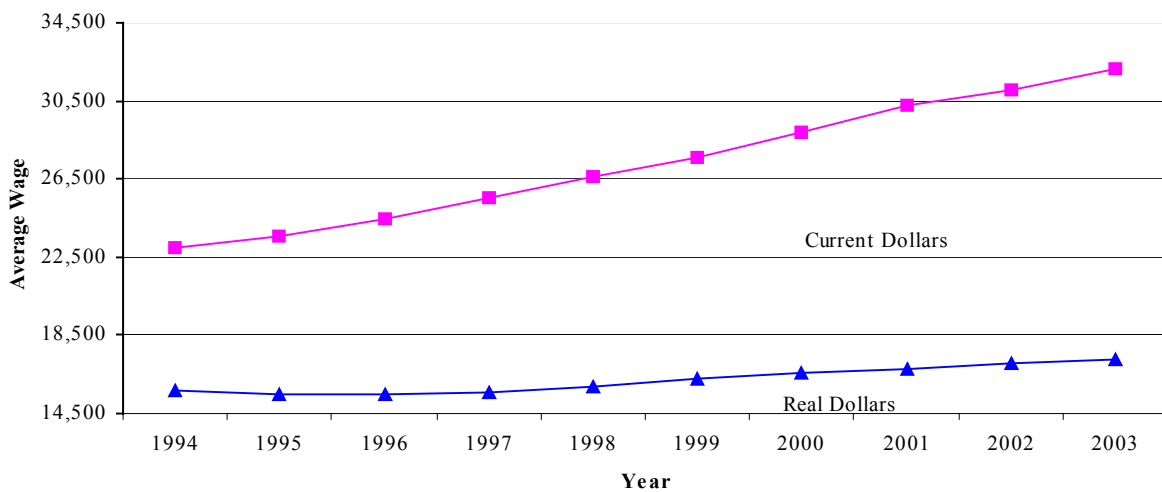
Industry Group	Reporting units		Employment Total		Average Wage	
	2003	% chg	2003	% chg	2003	% chg
Government Ownership	1,693	1.3	49,757	1.7	34,637	4.3
Federal government ownership	614	3.7	6,250	5.4	47,621	3.1
Postal service	407	1.1	2,204	-4.6	40,934	4.2
Other federal	208	9.4	4,046	11.8	51,265	1.3
State government ownership	254	0.1	15,310	1.9	39,573	3.9
Educational services	29	-0.9	5,605	3.0	37,880	4.4
Other state	225	0.0	9,705	1.2	40,551	3.7
Local government ownership	825	0.0	28,198	0.9	29,080	4.5
Educational services	275	-0.2	20,632	0.7	29,559	4.3
Other local	550	0.0	7,565	1.4	27,773	5.2

Wages

More than \$9.4 billion was paid to workers in 2003, up 3.4 percent from the previous year. The average wage grew by 3.4 percent, to \$32,090. In real dollars, current dollars adjusted for inflation using the CPI-U index, the change in average wages was 2.3 percent. Although the increases are modest, this represents the eighth consecutive year of increasing growth in both current and real dollars.

Graph 5

Average Wage 1994 - 2003



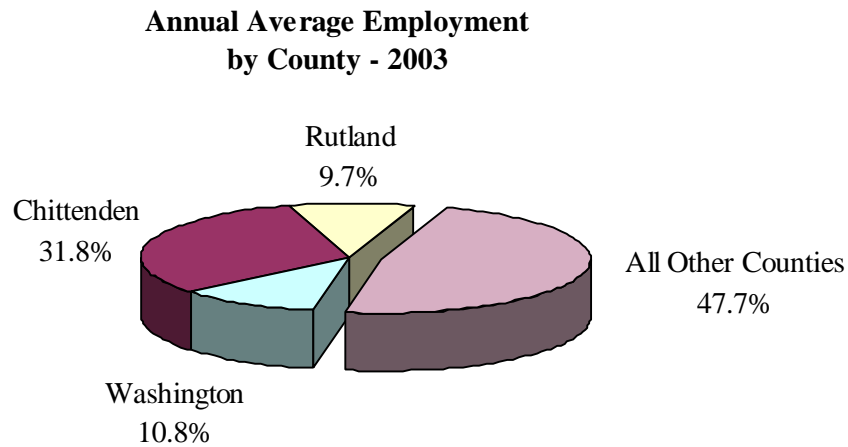
Counties

Employment

The northwest county of Chittenden, which is the largest industrial, commercial, and educational center of Vermont, accounts for 31.8 percent of the total employment. Washington County is next, contributing 10.8 percent while Rutland County follows with 9.7 percent. When combined, these three counties account for more than 50 percent of the total employment. Grand Isle and Essex Counties have the lowest levels of employment which when combined result in less than one percent.

When compared to the previous year, Grand Isle County boasted the largest rate of employment growth (3.4%). Eight of the fourteen counties experienced employment drops. The largest employment drop occurred in Essex County (7.2%) while the smallest occurred in Lamoille County (0.5%).

Graph 6

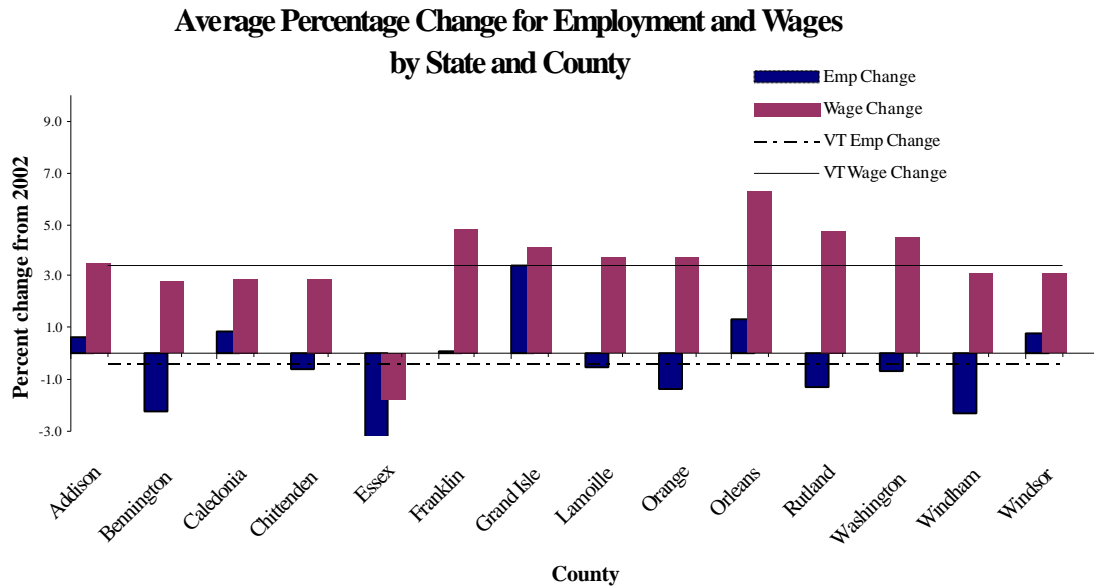


Wages

Chittenden continued to dominate over all the other counties in terms of its share of total annual wages and was the only county to exceed the Vermont average annual wage of \$32,090 with an average wage of \$37,432. Grand Isle reported the lowest average wage of \$22,396.

Overall, average annual wages increased in 13 of the 14 counties when compared to 2002. Eight of the 13 counties had increases above the state annual average of 3.4 percent. Orleans County's average annual wage grew the most (6.4%), while Essex County experienced the only loss with a drop of 1.8%.

Graph 7



Reporting Units

Vermont averaged 23,972 reporting units in 2003. Of these, 23.5 percent were located in Chittenden county alone. Almost forty-five percent of the reporting units were concentrated in the four counties of Chittenden, Rutland, Washington, and Windsor. Essex and Grand Isle had the fewest (less than 2 percent) with a combined total of 370 reporting units.

Table 7

County Annual Averages

County	Annual Average Reporting Units		Annual Average Employment		Total Annual Wages (\$)		Annual Average Wages (\$)	
	2003	Yr %	2003	Yr %	2003	Yr %	2003	Yr %
		Change		Change		Change		Change
Vermont	23,972	0.8	294,288	-0.4	9,443,639,225	3.0	32,090	3.4
Addison	1,277	1.5	13,907	0.6	425,235,035	4.0	30,576	3.5
Bennington	1,566	-1.2	17,977	-2.2	516,015,669	0.6	28,704	2.8
Caledonia	1,021	0.9	11,367	0.9	298,624,328	3.8	26,272	2.9
Chittenden	5,633	0.9	93,533	-0.6	3,501,121,097	2.3	37,432	2.9
Essex	172	-1.7	1,419	-7.2	36,175,994	-8.9	25,500	-1.8
Franklin	1,186	-4.4	15,352	0.1	462,118,432	4.9	30,102	4.8
Grand Isle	198	1.8	1,051	3.4	23,549,028	7.7	22,396	4.1
Lamoille	1,019	1.4	10,562	-0.5	268,493,477	3.2	25,421	3.7
Orange	856	0.9	7,982	-1.4	211,368,742	2.3	26,479	3.7
Orleans	926	2.7	9,578	1.3	250,130,711	7.8	26,114	6.4
Rutland	2,448	-0.9	28,552	-1.3	858,684,292	3.4	30,074	4.7
Washington	2,481	1.8	31,927	-0.7	1,018,528,038	3.8	31,902	4.5
Windham	1,914	0.6	22,877	-2.3	729,378,647	0.7	31,883	3.1
Windsor	2,401	2.0	23,259	0.8	699,721,733	4.0	30,083	3.1
Other /1	875	7.7	4,945	15.2	144,494,001	11.4	29,223	-3.3

1/ Location of business activity is statewide, countywide.

Towns

Towns with employment levels of 10,000 or more

There are seven towns in Vermont with employment levels higher than 10,000. Altogether these towns accounted for 36.4 percent of total employment. Essex had the largest employment change by dropping 9.0 percent, representing 1,320 lost jobs. It was followed by Brattleboro, with a 3.4 percent loss representing 399 fewer jobs. Burlington, the most heavily populated town, experienced an employment growth with an increase of 398 jobs for a 1.3 percent increase.

Table 8

Towns With Employment Levels Over 10,000

	Employment	% change from 2002	Wage (\$)	% change from 2002	Units	% change from 2002
Vermont	294,288	-0.4	32,090	3.4	23,972	0.8
Burlington	31,823	1.3	37,740	4.6	1,495	0.5
So. Burlington	17,111	1.0	34,319	3.1	1,032	4.3
Essex	13,269	-9.0	50,408	1.0	634	2.1
Rutland City	13,062	-0.2	32,311	3.9	986	-1.6
Brattleboro	11,191	-3.4	35,462	3.8	746	0.5
Bennington	10,388	-2.7	29,320	3.5	637	-1.9
Williston	10,272	3.0	34,715	2.1	665	-0.1
Seven Town Total	107,116				6,195	
% of Vermont	36.4				25.8	

The increase in average wages in these seven towns ranged from a low of 1.0 percent in Essex to a high of 4.6 percent in Burlington. Essex continued to have the largest wage at \$50,408, and Bennington the lowest at \$29,320.

Towns with employment levels of 1,000 or more

Employment

Of the 52 Vermont towns with employment levels of 1,000 or more, 29 had employment decreases and 23 had increases. Nine had employment increases of 85 or more. The largest gain was seen in Burlington with 398 new jobs. The only other town to gain more than 200 jobs was Williston, with 297 new jobs added to the roles. Four towns gained between 100 and 200 jobs, and three towns gained between 85 and 100.

There were five towns with losses of more than 150. The largest drop was experienced by Essex, with a loss of 1,320 jobs or a 9.0 percent reduction, followed by Brattleboro with a 3.4 percent loss reflecting 399 jobs. Bennington lost 287, for a 2.7 percent decrease. Barre City, Brandon, Barre Town, Killington, and Waterbury each lost between 100 and 150 jobs during this year.

Wages

Of the top ten towns with employment of 1,000 or more, Essex had the highest annual average wage of \$50,408 followed by Burlington with \$37,740. The annual average wage of all top ten towns exceeded the average annual wage for Vermont. Of the towns with employment levels of 1,000 or more with the lowest annual wages, Dover had the lowest annual wage with \$20,295 followed by Wilmington with \$21,587. These towns are located in the same vicinity and rely a great deal on the recreational industry for employment opportunities. Many of these jobs are seasonal or part-time which in part, results in a lower annual average wage.

Table 9

**Highest and Lowest Wage
for Towns with Employment Levels of 1,000 or more
Ranked by Annual Average Wage**

	Annual Average Employment		Annual Average Wage		
	Employment	# change 2002	% change 2002	Wage (\$)	% change 2002
Vermont	294,288	-1,155	-0.4	32,090	3.4
Top Ten Towns					
Essex	13,269	-1,320	-9.0	50,408	1.0
Burlington	31,823	398	1.3	37,740	4.6
Vergennes	2,096	-85	-3.9	36,645	3.0
Montpelier	9,294	33	0.4	36,368	5.5
Milton	2,425	102	4.4	35,531	11.3
Brattleboro	11,191	-399	-3.4	35,462	3.8
Waterbury	3,869	-130	-3.2	35,389	5.4
Hartford	5,858	92	1.6	35,282	3.6
Colchester	8,734	-32	-0.4	35,261	4.7
Williston	10,272	297	3.0	34,715	2.1
Lowest Ten Towns					
Dover	1,226	-41	-3.2	20,295	8.6
Wilmington	1,024	7	0.7	21,587	5.6
Cambridge	1,289	-22	-1.6	21,615	1.8
Killington	1,953	-102	-5.0	21,816	3.9
Barton	1,434	10	0.7	22,883	-2.8
Enosburg	1,112	-25	-2.2	23,366	6.7
Ludlow	1,863	26	1.4	23,573	3.6
Stowe	3,811	-14	-0.4	23,948	1.9
Bristol	1,198	42	3.6	24,878	-2.4
Brandon	1,502	-157	-9.5	25,855	5.2

Table 10

**Towns with the Largest Job Gains in 2003 /1
for Towns with Employment Levels of 1,000 or more
Ranked by Absolute Change in Employment**

	Annual Average Employment		Annual Average Wage		
	Employment	# change 2002	% change 2002	Wage (\$)	% change 2002
Vermont	294,288	-1,155	-0.4	32,090	3.4
Burlington	31,823	398	1.3	37,740	4.6
Williston	10,272	297	3.0	34,715	2.1
South Burlington	17,111	171	1.0	34,319	3.1
St Albans City	7,702	146	1.9	32,194	4.5
Milton	2,426	102	4.4	35,531	11.3
Newport City	4,252	100	2.4	28,599	9.8
Hartford	5,858	92	1.6	35,282	3.6
Middlebury	7,552	89	1.2	31,438	2.2
Lyndon	2,859	85	3.0	26,845	1.2

Table 11

**Towns with the Largest Job Losses in 2003 /1
for Towns with Employment Levels of 1,000 or more
Ranked by Absolute Change in Employment**

	Annual Average Employment		Annual Average Wage		
	Employment	# change 2002	% change 2002	Wage (\$)	% change 2002
Vermont	294,288	-1,155	-0.4	32,090	3.40
Essex	13,269	-1320	-9.0	50,408	1.0
Brattleboro	11,191	-399	-3.4	35,462	3.8
Bennington	10,388	-287	-2.7	29,320	3.5
Barre Town	1,881	-173	-8.4	29,899	-3.7
Brandon	1,502	-157	-9.5	25,855	5.2
Barre City	4,759	-138	-2.8	28,960	3.4
Waterbury	3,869	-130	-3.2	35,389	5.4
Killington	1,953	-102	-5.0	21,816	3.9

2003 STATISTICS

Page	Table	
16	Table 1	Vermont NAICS Based Industry Groups, 2003 annual average units, employment, women, and average wage with percent changes from 2002
22	Table 2	Vermont County and Town, 2003, total covered annual average with change from 2002 units, employment, women, average wage
29	Table 3	Vermont County and NAICS Based Industry Groups, 2003 annual average units, employment, women, and average wage with percent changes from 2002
45	Table 4	Vermont Size Class by NAICS Based Industry Groups, 2003 private ownership first quarter reporting units and annual average employment
47	Table 5	Vermont Size Class by County, 2003 private ownership first quarter reporting units and annual average employment

Table 1

Vermont UI Covered Employment by NAICS Based Industry Groups

annual average with percent change from 2002 and 1988, units, employment, women, average wage

NAICS Major Industry Group	Reporting			Employment						Average		
	2003	Units		Total			Women			Wage		
		Pct change		Pct change			Pct change			Pct change		
		From	Avg/4	2,003	From	Avg/4	2,003	From	Avg/4	2,003	From	Avg/4
	2002	98-03		2002	98-03		2002	98-03		2002	98-03	
	%	%		%	%		%	%		%	%	
Total Covered	23,972	0.8	0.9	294,288	-0.4	1.0	144,276	0.7	1.6	32,090	3.4	3.8
Private Ownership	22,279	0.8	0.9	244,531	-0.8	0.7	117,224	0.5	1.2	31,571	3.1	3.8
Goods Producing - Private	4,558	2.3	1.6	55,811	-4.7	-1.9	13,608	-5.3	-2.0	40,344	2.3	3.6
Natural Resources and Mining	422	0.7	3.7	2,946	-1.3	0.9	718	-2.4	-2.1	26,813	2.6	2.5
Sector 11, Agriculture, forestry, fishing & hunting	354	1.3	4.5	2,174	0.8	2.1	632	-2.1	-2.7	21,662	2.3	3.1
111 Crop production	78	3.0	7.6	461	2.1	-5.3	215	-5.6	-9.6	16,198	6.2	0.4
112 Animal production	139	4.1	8.8	1,212	3.2	8.6	248	8.1	8.3	20,835	-0.4	3.7
113 Forestry & logging	n	n	n	n	n	n	n	n	n	n	n	n
114 Fishing, hunting & trapping	n	n	n	n	n	n	n	n	n	n	n	n
115 Agriculture & forestry support activities	61	-2.0	4.6	331	-6.4	-0.8	153	-10.9	-3.2	31,218	7.5	4.3
Sector 21, Mining	68	-2.2	0.1	772	-6.8	-2.0	86	-4.2	2.2	41,314	5.8	3.2
211 Oil & gas extraction	-	-	-	-	-	-	-	-	-	-	-	-
212 Mining, except oil & gas	n	n	n	n	n	n	n	n	n	n	n	n
213 Support activities for mining	n	n	n	n	n	n	n	n	n	n	n	n
Construction	2,912	4.1	2.8	15,378	3.3	2.4	1,766	4.2	4.0	33,388	1.7	3.7
Sector 23, Construction	2,912	4.1	2.8	15,378	3.3	2.4	1,766	4.2	4.0	33,388	1.7	3.7
236 Construction of buildings	995	4.0	2.7	4,750	3.5	4.2	535	8.0	5.4	33,642	2.5	4.1
237 Heavy & civil engineering construction	171	-3.9	-1.9	1,769	-7.7	-1.5	257	1.0	1.3	40,456	2.5	4.3
238 Specialty trade contractors	1,745	5.0	3.4	8,859	5.6	2.3	974	3.1	4.0	31,840	1.7	3.4
Manufacturing	1,225	-1.3	-1.6	37,486	-7.9	-3.6	11,124	-6.9	-2.8	44,261	3.3	4.1
Durable Goods	803	-1.1	-0.6	26,741	-9.0	-3.6	7,281	-7.7	-2.2	47,773	3.1	4.2
321 Wood product manufacturing	130	0.8	-1.9	2,559	-5.5	-3.6	527	-6.6	-2.6	33,277	13.4	4.5
327 Nonmetallic mineral product mfg.	149	-1.5	1.3	2,024	-3.6	-1.3	401	2.0	-1.0	38,791	5.1	4.8
331 Primary metal manufacturing	12	-11.5	-1.3	415	-15.7	-7.7	81	-11.0	-9.4	40,586	8.7	3.9
332 Fabricated metal product mfg.	104	-4.4	0.0	2,784	-3.9	-2.4	522	-12.6	-3.2	46,070	8.7	5.2
333 Machinery manufacturing	96	-1.8	-3.2	2,975	-7.4	-6.9	606	-10.7	-4.0	45,524	4.3	3.6
334-335 Computer, electronic, & electrical equip. mfg. /1	81	2.5	-1.4	9,591	-13.1	-3.3	3,088	-9.1	-1.5	61,027	3.3	4.2
336 Transportation equipment mfg.	28	9.7	0.7	2,242	-4.1	-2.0	564	-3.1	-0.8	51,485	2.8	3.9
337 Furniture & related product mfg.	95	-3.3	-0.1	2,268	-14.8	-5.8	599	-14.7	-5.3	28,160	-1.0	3.2
339 Miscellaneous manufacturing	107	-1.2	0.6	1,884	-3.1	-1.1	894	1.2	-0.5	36,484	-9.2	3.1
Non-Durable Goods	423	-1.7	-3.3	10,745	-5.0	-3.7	3,843	-5.3	-4.0	35,521	4.9	3.5
311 Food Mfg.	135	-3.6	-3.9	3,809	-4.4	0.4	1,337	-3.3	2.2	33,474	5.0	4.1
312 Beverage & tobacco product mfg.	19	4.1	-2.2	324	3.9	5.3	86	5.2	11.1	31,104	1.3	4.8
313 Textile mills	16	-1.5	-6.0	189	-8.0	-9.7	100	11.1	-4.7	27,310	-11.9	-1.3
314 Textile product mills	24	0.0	-4.8	233	-9.4	-0.5	152	-10.0	-0.9	26,441	3.9	5.9
315 Apparel manufacturing	28	2.8	-4.4	466	-13.1	-11.1	362	-13.8	-11.9	23,773	8.1	7.6
316 Leather & allied product mfg.	n	n	n	n	n	n	n	n	n	n	n	n
322 Paper manufacturing	20	-17.7	-5.4	1,343	-16.8	-8.4	254	-24.8	-13.0	47,011	13.3	5.5
323 Printing & related support activities	105	-1.4	-2.8	1,898	-3.5	-7.7	646	-2.8	-7.4	37,023	4.1	3.4

See footnotes at end of table.

Table 1

Vermont UI Covered Employment by NAICS Based Industry Groups

annual average with percent change from 2002 and 1988, units, employment, women, average wage

NAICS Major Industry Group	Reporting			Employment						Average		
	2003	Units		Total			Women			Wage		
		Pct change		Pct change			Pct change			Pct change		
		From	Avg/4	2,003	From	Avg/4	2,003	From	Avg/4	2,003	From	Avg/4
	2002	98-03		2002	98-03		2002	98-03		2002	98-03	
	%	%		%	%		%	%		%	%	
324 Petroleum & coal products mfg.	n	n	n	n	n	n	n	n	n	n	n	n
325 Chemical manufacturing	34	4.6	0.1	1,386	6.9	-1.2	501	3.2	-1.9	36,768	1.6	1.8
326 Plastics & rubber products mfg.	29	3.6	-0.9	985	-4.9	-2.4	341	-10.0	-4.5	34,094	4.4	1.8
Service Providing - Private	17,721	0.4	0.7	188,720	0.4	1.6	103,616	1.4	1.7	28,977	4.0	4.3
Trade, Transportation, and Utilities	5,598	-1.0	-0.7	58,075	-0.9	0.9	24,033	-1.0	0.4	28,671	3.5	4.2
Sector 42, Wholesale trade	1,315	0.9	1.2	10,256	2.3	1.4	2,824	1.5	0.5	44,235	3.5	5.2
423 Merchant wholesalers, durable goods	771	0.0	0.0	5,123	3.3	2.4	1,295	1.6	0.9	42,221	3.2	3.8
424 Merchant wholesalers, nondurable gds	450	4.0	0.1	4,952	1.5	-0.1	1,467	1.1	-0.7	46,081	4.0	6.5
425 Electronic markets & agents & brokers	93	-5.6	36.1	181	-3.5	48.4	62	10.8	68.8	50,720	-0.7	0.7
Sector 44-45, Retail trade	3,669	-1.5	-1.3	39,519	-1.5	1.0	19,033	-1.3	0.4	22,390	3.6	4.2
441 Motor vehicle & parts dealers	407	-2.9	-0.7	4,865	0.9	1.2	786	4.9	1.8	35,670	4.4	4.6
442 Furniture & home furnishings stores	186	-0.3	1.4	1,264	0.8	6.0	629	3.0	6.5	26,407	2.7	4.6
443 Electronics & appliance stores	120	-1.8	-4.7	827	-11.7	-1.4	215	-8.6	-2.4	28,030	-2.2	2.3
444 Building material & garden supply stores	324	0.1	-0.9	3,454	3.4	3.6	995	4.2	5.7	27,490	2.4	3.2
445 Food & beverage stores	479	-4.6	-3.0	9,551	-3.5	0.0	5,145	-3.7	-0.9	17,302	1.1	3.8
446 Health & personal care stores	169	-1.2	-1.5	1,971	0.6	3.0	1,275	0.5	1.6	28,182	5.2	4.6
447 Gasoline station	485	-1.0	-0.2	3,769	-0.8	1.6	1,995	0.1	2.0	15,361	2.4	3.9
448 Clothing & clothing accessories stores	333	-3.3	-3.3	2,858	0.1	1.6	2,064	2.5	0.7	16,433	1.9	3.8
451 Sporting gds, hobby, book & music stores	285	0.6	-0.3	2,217	1.4	2.3	1,029	4.1	2.4	16,742	2.6	2.7
452 General merchandise store	142	-6.6	-1.6	2,898	-12.1	-3.4	1,938	-13.0	-4.7	17,023	3.1	5.0
453 Miscellaneous store retailers	507	0.5	-0.5	3,135	2.4	2.4	1,973	0.7	2.3	18,618	3.8	4.7
454 Nonstore retailers	233	2.2	-0.3	2,709	0.7	0.0	990	4.5	-0.7	32,969	6.8	4.0
Sector 48-49, Transportation & warehousing	562	-1.8	-1.0	6,574	-2.9	0.0	1,782	-1.5	1.7	31,636	3.4	3.3
481 Air transportation	14	14.9	12.5	280	5.9	4.4	94	-5.8	4.6	32,106	-1.7	-0.2
482 Rail transportation /2	-	-	-	-	-	-	-	-	-	-	-	-
483 Water transportation	n	n	n	n	n	n	n	n	n	n	n	n
484 Truck transportation	341	-0.8	-1.1	2,555	-0.7	-2.1	292	2.9	1.2	35,813	3.7	3.5
485 Transit & grnd passenger transport	72	0.0	-2.3	1,328	-0.7	2.0	475	-7.3	2.5	17,024	0.7	3.7
486 Pipeline transportation	-	-	n	-	-	n	-	-	n	-	-	n
487 Scenic & sightseeing transportation	8	-15.8	-5.3	69	-3.2	3.0	35	3.7	-1.5	24,675	0.0	7.7
488 Support activities for transportation	56	-4.3	0.6	461	-9.5	0.4	194	-6.0	0.4	36,162	-5.3	7.1
491 Postal service	n	n	-	n	n	-	n	n	-	n	n	-
492 Couriers & messengers	36	-12.2	-3.0	1,114	-7.0	0.5	303	-0.7	1.4	30,874	2.6	1.8
493 Warehousing & storage	29	-0.9	-1.0	652	-8.8	1.9	358	5.5	4.9	42,986	18.0	5.2
Sector 22, Utilities	52	2.0	-1.6	1,726	1.0	-1.4	396	-1.5	-3.3	68,710	-2.4	4.2
221 Utilities	52	2.0	-1.6	1,726	1.0	-1.4	396	-1.5	-3.3	68,710	-2.4	4.2
Information	510	-1.4	2.0	6,495	-2.4	0.2	3,255	-2.2	-0.1	37,227	4.0	4.1
Sector 51, Information	510	-1.4	2.0	6,495	-2.4	0.2	3,255	-2.2	-0.1	37,227	4.0	4.1
511 Publishing industries, except Internet	187	-1.1	1.7	2,596	-2.7	0.8	1,302	-4.5	-1.1	32,796	4.4	3.8

See footnotes at end of table.

Table 1

Vermont UI Covered Employment by NAICS Based Industry Groups

annual average with percent change from 2002 and 1988, units, employment, women, average wage

NAICS Major Industry Group	Reporting			Employment						Average		
	2003	Units		Total			Women			Wage		
		Pct change		Pct change			Pct change			Pct change		
		From	Avg/4	2,003	From	Avg/4	2,003	From	Avg/4	2,003	From	Avg/4
	2002	98-03		2002	98-03		2002	98-03		2002	98-03	
	%	%		%	%		%	%		%	%	
512 Motion picture & sound recording inds	78	-4.0	-0.9	430	-5.5	-2.8	213	-1.3	-1.1	16,861	11.5	1.6
515 Broadcasting, except Internet	39	-8.9	-3.0	745	-2.9	-1.2	272	-4.2	-0.1	32,513	3.4	4.0
516 Internet publishing & broadcasting	n	n	n	n	n	n	n	n	n	n	n	
517 Telecommunications	118	5.3	4.8	1,675	-4.7	-1.0	702	-5.4	-1.0	56,392	6.1	4.3
518 ISPs, search portals, & data processing	47	-3.1	6.6	789	4.2	3.6	574	7.6	2.9	33,433	-1.8	7.6
519 Other information services	n	n	n	n	n	n	n	n	n	n	n	
Financial Activities	1,654	3.3	0.8	12,989	0.7	0.5	8,160	1.0	0.5	44,513	7.0	5.4
Sector 52, Finance and Insurance	941	3.7	0.7	9,888	0.5	0.3	6,780	1.3	0.4	49,841	7.9	5.5
521 Monetary authorities - central bank	-	-	-	-	-	-	-	-	-	-	-	
522 Credit intermediation & related activities	406	6.6	1.0	5,091	1.7	-0.8	3,768	2.2	-0.6	43,272	9.3	5.8
523 Securities, commodity cntrcts, invstmnts	119	8.9	2.7	754	0.3	1.8	350	4.9	0.6	92,768	1.4	5.1
524 Insurance carriers & related activities	400	-0.5	-0.6	3,937	-0.9	1.3	2,597	-0.7	1.7	50,118	9.3	4.7
525 Funds, trusts, & other financial vehicles	16	8.3	15.2	106	3.2	11.7	66	7.8	8.9	49,534	4.2	6.7
Sector 53, Real estate & rental & leasing	713	2.6	1.0	3,101	1.0	1.2	1,380	-0.2	1.3	27,523	2.3	5.3
531 Real estate	531	3.8	1.5	1,851	2.0	2.9	955	2.2	3.8	31,285	2.5	6.2
532 Rental & leasing services	175	-1.6	-0.7	1,226	0.5	-0.5	416	-4.2	-2.6	21,211	-0.2	3.0
533 Lessors of nonfinancial intangible assets	8	29.2	5.3	23	-33.5	-14.6	10	-36.5	-20.1	60,787	64.3	12.5
Professional and Business Services	3,545	1.9	3.0	20,394	0.1	1.1	9,047	0.0	0.5	38,298	4.9	4.9
Sector 54, Professional, scientific, & technical svcs.	2,425	1.1	3.1	12,230	-0.7	2.9	6,073	0.3	2.8	47,264	7.6	3.9
541 Professional, scientific & technical services	2,425	1.1	3.1	12,230	-0.7	2.9	6,073	0.3	2.8	47,264	7.6	3.9
Sector 55, Mgt. of companies & enterprises	21	-11.8	-5.5	282	-7.7	2.3	128	-4.5	-0.3	59,466	3.3	8.0
551 Mgt of companies & enterprises	21	-11.8	-5.5	282	-7.7	2.3	128	-4.5	-0.3	59,466	3.3	8.0
Sector 56, Administrative & waste services	1,100	4.0	2.8	7,882	1.7	-1.3	2,846	-0.5	-3.5	23,626	-1.1	4.6
561 Administrative & support services	1,002	4.3	2.8	6,968	1.4	-1.8	2,692	-0.7	-3.9	21,686	-2.2	4.8
562 Waste mgt & remediation services	98	1.6	2.7	913	3.9	2.8	155	2.3	5.9	38,427	3.0	1.5
Education & Health Services	2,128	3.7	2.0	48,698	3.9	4.1	36,619	4.0	4.1	30,453	2.3	3.5
Sector 61, Educational services	301	7.5	4.7	9,005	1.3	2.4	5,243	2.8	2.4	31,041	3.3	3.4
611 Educational services	301	7.5	4.7	9,005	1.3	2.4	5,243	2.8	2.4	31,041	3.3	3.4
Sector 62, Health care & social assistance	1,827	3.1	1.6	39,693	4.6	4.6	31,377	4.2	4.4	30,320	2.1	3.5
621 Ambulatory health care services	1,156	5.7	1.9	15,493	4.0	4.0	12,099	2.1	3.9	35,131	3.3	4.2
622 Hospitals	20	-5.8	0.2	10,170	2.4	2.9	7,945	3.2	2.6	38,212	3.0	4.3
623 Nursing & residential care facilities	170	2.9	0.3	6,585	1.2	1.8	5,357	1.8	1.4	22,265	3.0	4.5
624 Social assistance	480	-2.2	1.4	7,444	12.5	12.1	5,976	12.8	12.4	16,652	-1.6	0.9
Leisure and Hospitality	2,199	2.2	0.4	32,725	-1.0	0.4	17,629	1.1	0.8	15,223	3.6	3.5
Sector 71, Arts, entertainment, & recreation	373	2.5	2.4	3,691	1.4	4.4	1,847	3.6	6.0	16,397	4.3	0.6
711 Performing arts & spectator sports	105	-1.2	3.2	531	-1.2	4.5	243	-3.3	4.1	26,783	4.7	-5.0
712 Museums, historical sites, zoos, & parks	26	5.1	6.2	406	7.2	1.8	238	12.8	1.7	22,053	2.5	5.6
713 Amusements, gambling, & recreation	242	3.9	1.7	2,754	1.1	4.8	1,367	3.4	7.3	13,561	4.5	2.4

See footnotes at end of table.

Table 1

Vermont UI Covered Employment by NAICS Based Industry Groups

annual average with percent change from 2002 and 1988, units, employment, women, average wage

NAICS Major Industry Group	Reporting			Employment						Average		
	2003	Units		Total			Women			Wage		
		Pct change		Pct change			Pct change			Pct change		
		From	Avg/4	2,003	From	Avg/4	2,003	From	Avg/4	2,003	From	Avg/4
	2002	98-03		2002	98-03		2002	98-03		2002	98-03	
	%	%		%	%		%	%		%	%	
Sector 72, Accommodation & food services	1,826	2.1	0.1	29,034	-1.3	0.0	15,781	0.8	0.2	15,073	3.5	3.8
721 Accommodation	529	1.1	0.1	11,219	-3.4	-0.5	6,307	-1.1	0.1	18,968	4.9	3.8
722 Food services & drinking places	1,297	2.5	0.1	17,815	0.0	0.3	9,474	2.1	0.3	12,621	2.9	4.0
Other Services	2,089	-4.9	-0.5	9,343	-1.6	0.9	4,874	0.5	1.5	23,677	5.1	4.3
Sector 81, Other services, except public admin.	2,089	-4.9	-0.5	9,343	-1.6	0.9	4,874	0.5	1.5	23,677	5.1	4.3
811 Repair & maintenance	687	3.2	0.5	2,814	0.0	0.2	425	0.2	-0.5	31,765	1.4	3.4
812 Personal & laundry services	423	1.5	-1.0	2,183	1.5	0.2	1,507	7.7	0.1	18,325	2.2	3.8
813 Membership associations & orgs	447	0.2	1.5	3,317	1.4	3.1	2,091	3.8	4.5	22,440	7.7	5.7
814 Private households	532	-20.2	-2.7	1,028	-18.2	-2.0	851	-15.7	-1.6	16,900	11.2	4.7
Government Ownership/3	1,693	1.3	0.8	49,757	1.7	2.5	27,053	1.2	3.3	34,637	4.3	3.7
Federal Government Ownership /3	614	3.7	2.0	6,250	5.4	2.8	-	-	-	47,621	3.1	3.5
Service Providing - Federal Govt.	614	3.7	2.0	6,250	5.4	2.8	-	-	-	47,621	3.1	3.5
Trade, Transportation and Utilities	409	1.0	1.3	2,271	-6.0	-1.6	-	-	-	42,320	4.8	3.1
SectorS 48-49, Transportation & Warehousing	409	1.0	1.3	2,271	-6.0	-1.6	-	-	-	42,320	4.8	3.1
484 Truck transportation	1	-	-	2	-	-	-	-	-	95,831	-	-
488 Support activities for transportation	1	-55.6	0.0	65	-38.1	-6.3	-	-	-	87,860	36.6	7.2
491 Postal service	407	1.1	1.2	2,204	-4.6	-1.5	-	-	-	40,934	4.2	3.0
Financial Activities	5	0.0	-6.5	39	-2.3	-0.5	-	-	-	56,005	5.4	5.1
Sector 52, Finance and Insurance	5	0.0	-6.5	39	-2.3	-0.5	-	-	-	56,005	5.4	5.1
522 Credit intermediation and related activities	5	0.0	-6.5	39	-2.3	-0.5	-	-	-	56,005	5.4	5.1
Professional and Business Services	7	-12.5	-6.9	43	-1.1	2.1	-	-	-	59,645	7.5	4.7
Sector 54, Prof., Scientific, and Technical Svcs.	7	-12.5	-6.9	43	-1.1	2.1	-	-	-	59,645	7.5	4.7
541 Professional, scientific, and technical services	7	-12.5	-6.9	43	-1.1	2.1	-	-	-	59,645	7.5	4.7
Education and Health Services	1	0.0	0.0	705	1.4	0.1	-	-	-	54,827	4.2	5.8
Sector 62, Health Care and Social Assistance	1	0.0	0.0	705	1.4	0.1	-	-	-	54,827	4.2	5.8
622 Hospitals	1	0.0	0.0	705	1.4	0.1	-	-	-	54,827	4.2	5.8
Public Administration	193	11.0	4.4	3,191	16.7	7.6	-	-	-	49,535	0.2	2.5
Sector 92, Public Administration	193	11.0	4.4	3,191	16.7	7.6	-	-	-	49,535	0.2	2.5
921 Executive, legislative and general government	11	-27.4	-5.6	136	-51.1	-11.6	-	-	-	55,283	-2.1	2.0
922 Justice, public order, and safety activities	48	92.0	18.5	1,025	485.5	43.5	-	-	-	52,541	-21.2	-0.8
923 Administration of human resource programs	4	0.0	5.9	65	2.9	1.6	-	-	-	52,867	-1.4	2.9
924 Administration of environmental programs	36	4.3	1.8	354	2.9	5.3	-	-	-	42,286	3.9	1.9
925 Community and housing program administration	1	0.0	0.0	5	22.5	21.1	-	-	-	79,676	4.9	3.3
926 Administration of economic programs	73	14.6	7.9	263	57.0	17.8	-	-	-	42,089	-11.6	-0.3
927 Space research and technology	-	-	-	-	-	-	-	-	-	-	-	-
928 National security and international affairs	20	-35.0	-10.1	1,343	-21.1	0.0	-	-	-	49,756	3.0	3.3
State government ownership	254	-0.1	0.1	15,310	1.9	2.7	7,682	2.2	5.1	39,573	3.9	4.2
Goods Producing - State Govt.	16	0.0	-5.3	570	1.8	2.5	66	-2.9	-19.3	40,544	3.0	4.4

See footnotes at end of table.

Table 1

Vermont UI Covered Employment by NAICS Based Industry Groups

annual average with percent change from 2002 and 1988, units, employment, women, average wage

NAICS Major Industry Group	Reporting			Employment						Average		
	2003	Units		Total			Women			Wage		
		Pct change		Pct change			Pct change			Pct change		
		From	Avg/4	2,003	From	Avg/4	2,003	From	Avg/4	2,003	From	Avg/4
	2002	98-03		2002	98-03		2002	98-03		2002	98-03	
	%	%		%	%		%	%		%	%	
Construction	16	0.0	-5.3	570	1.8	2.5	66	-2.9	-19.3	40,544	3.0	4.4
Sector 23, Construction	16	0.0	-5.3	570	1.8	2.5	66	-2.9	-19.3	40,544	3.0	4.4
237 Heavy and civil engineering construction	16	0.0	-5.3	570	1.8	2.5	66	-2.9	-19.3	40,544	3.0	4.4
Service Providing - State Govt.	238	-0.1	0.5	14,740	1.9	2.7	7,616	2.3	5.6	39,536	4.0	4.2
Information	4	0.0	-4.4	41	-0.8	-7.6	28	10.0	3.9	42,166	5.7	7.7
Sector 51, Information	4	0.0	-4.4	41	-0.8	-7.6	28	10.0	3.9	42,166	5.7	7.7
519 Other information Services	4	0.0	-4.4	41	-0.8	-7.6	28	10.0	3.9	42,166	5.7	7.7
Financial Activities	1	-50.0	-12.9	43	2.2	-2.1	29	1.8	-2.1	42,289	-1.8	2.9
Sector 52, Finance and Insurance	1	-50.0	-12.9	43	2.2	-2.1	29	1.8	-2.1	42,289	-1.8	2.9
522 Credit intermediation and related activities	1	0.0	0.0	43	4.7	-1.7	29	1.8	-2.1	42,289	0.2	3.2
Professional and Business Services	17	0.0	5.5	543	-6.0	24.8	197	-3.0	18.1	43,764	11.4	3.8
Sector 56, Administrative & waste services	17	0.0	5.5	543	-6.0	24.8	197	-3.0	18.1	43,764	11.4	3.8
561 Administrative and support services	17	0.0	5.5	543	-6.0	24.8	197	-3.0	18.1	43,764	11.4	3.8
Education and Health Services	68	-0.4	14.9	7,116	2.8	4.1	4,076	3.4	6.9	38,361	4.1	3.5
Sector 61, Educational Services	29	-0.9	-1.3	5,605	3.0	2.9	3,100	4.8	3.5	37,880	4.4	2.9
611 Educational services	29	-0.9	-1.3	5,605	3.0	2.9	3,100	4.8	3.5	37,880	4.4	2.9
Sector 62, Health Care and Social Assistance	39	0.0	67.0	1,511	1.8	9.3	976	-1.0	26.0	40,146	3.2	6.4
622 Hospitals	1	0.0	0.0	255	7.5	-5.3	119	-0.6	0.1	34,697	-2.5	2.4
623 Nursing and residential care facilities	1	0.0	-12.9	249	0.3	-17.1	187	2.0	-0.2	40,493	4.5	7.1
624 Social assistance	37	0.0	-	1,007	0.9	-	670	-1.8	-	41,441	4.3	-
Public Administration	148	0.7	-0.1	6,998	1.7	1.4	3,286	1.2	4.6	40,370	3.3	4.8
Sector 92, Public Administration	148	0.7	-0.1	6,998	1.7	1.4	3,286	1.2	4.6	40,370	3.3	4.8
921 Executive, legislative and general government	13	0.0	-10.8	551	8.6	-16.8	331	1.8	-8.1	37,153	-4.0	3.9
922 Justice, public order, and safety activities	65	1.6	4.2	2,459	1.4	12.5	861	2.0	9.2	41,099	3.5	4.5
923 Administration of human resource programs	22	0.0	-7.8	1,597	1.9	-5.4	1,126	0.9	4.3	41,574	3.4	5.6
924 Administration of environmental programs	26	0.0	0.8	726	-2.1	10.9	269	0.1	7.5	42,344	7.1	4.0
925 Community and housing program administration	3	0.0	8.4	321	1.4	33.7	183	-1.6	32.2	37,919	4.9	4.7
926 Administration of economic programs	13	0.0	0.0	1,230	1.4	1.2	458	1.7	1.7	38,134	3.5	3.9
928 National security and international affairs	6	0.0	-	113	0.4	-	58	4.5	-	41,817	4.4	-
Local government ownership	825	0.0	0.3	28,198	0.9	2.3	19,371	0.8	2.6	29,080	4.5	3.4
Goods Producing - Local Govt.	30	0.0	1.4	565	-0.6	1.2	66	7.8	1.2	33,403	5.9	4.1
Construction	30	0.0	1.4	565	-0.6	1.2	66	7.8	1.2	33,403	5.9	4.1
Sector 23, Construction	30	0.0	1.4	565	-0.6	1.2	66	7.8	1.2	33,403	5.9	4.1
237 Heavy and civil engineering construction	30	0.0	1.4	565	-0.6	1.2	66	7.8	1.2	33,403	5.9	4.1
Service Providing - Local Govt.	795	0.0	0.2	27,633	0.9	2.3	19,305	0.8	2.6	28,991	4.5	3.4
Trade, Transportation and Utilities	53	1.9	2.0	618	4.7	3.3	109	7.4	6.0	39,490	5.4	3.1
SectorS 48-49, Transportation & Warehousing	5	0.0	0.0	196	10.9	5.8	46	26.7	10.4	31,419	4.2	5.2
485 Transit and ground passenger transportation	3	0.0	0.0	162	15.7	6.3	40	21.1	8.1	29,542	0.0	5.0
488 Support activities for transportation	2	0.0	0.0	35	-7.0	3.4	6	84.6	43.1	40,220	23.7	6.7

See footnotes at end of table.

Table 1

Vermont UI Covered Employment by NAICS Based Industry Groups

annual average with percent change from 2002 and 1988, units, employment, women, average wage

NAICS Major Industry Group	Reporting			Employment						Average		
	2003	Units		Total			Women			Wage		
		Pct change		Pct change			Pct change			Pct change		
		From	Avg/4	2,003	From	Avg/4	2,003	From	Avg/4	2,003	From	Avg/4
	2002	98-03		2002	98-03		2002	98-03		2002	98-03	
	%	%		%	%		%	%		%	%	
Sector 22, Utilities	48	2.1	2.2	421	2.0	2.2	63	-3.4	3.3	43,249	6.5	2.9
221 Utilities	48	2.1	2.2	421	2.0	2.2	63	-3.4	3.3	43,249	6.5	2.9
Information	12	0.0	3.7	121	5.4	5.7	92	3.7	5.2	16,282	-1.1	3.9
Sector 51, Information	12	0.0	3.7	121	5.4	5.7	92	3.7	5.2	16,282	-1.1	3.9
519 Other Information Services	12	0.0	3.7	121	5.4	5.7	92	3.7	5.2	16,282	-1.1	3.9
Professional and Business Services	12	0.0	1.8	38	-1.3	3.1	6	-17.9	-7.5	27,966	15.4	6.1
Sector 54, Prof., Scientific, & Technical Svcs.	2	0.0	0.0	11	-8.5	2.0	3	-14.3	-8.8	38,499	19.5	5.3
541 Professional and technical services	2	0.0	0.0	11	-8.5	2.0	3	-14.3	-8.8	38,499	19.5	5.3
Sector 56, Administrative & Waste Services	10	0.0	2.1	27	1.9	3.6	3	-21.4	-6.0	23,779	14.9	7.0
561 Administrative and support services	10	0.0	2.1	27	1.9	3.6	3	-21.4	-6.0	23,779	14.9	7.0
Education and Health Services	277	-0.2	-0.1	20,662	0.7	2.3	16,533	1.0	2.7	29,559	4.3	3.2
Sector 61, Educational Services	275	-0.2	-0.2	20,632	0.7	2.3	16,526	0.9	2.7	29,559	4.3	3.1
611 Educational services	275	-0.2	-0.2	20,632	0.7	2.3	16,526	0.9	2.7	29,559	4.3	3.1
Sector 62, Health Care and Social Assistance	2	0.0	9.9	30	9.2	-0.4	7	73.3	4.4	29,596	2.3	16.5
621 Ambulatory health care services	2	0.0	9.9	30	9.2	-0.4	7	73.3	4.4	29,596	2.3	16.5
Leisure and Hospitality	14	0.0	-1.4	225	-6.4	-1.8	63	-23.1	-6.9	20,964	10.8	7.6
Sector 71, Arts, Entertainment, and Recreation	14	0.0	-1.4	225	-6.4	-1.8	63	-23.1	-6.9	20,964	10.8	7.6
713 Amusements, gambling, and recreation	14	0.0	-1.4	225	-6.4	-1.8	63	-23.1	-6.9	20,964	10.8	7.6
Other Services	5	18.8	9.6	11	13.7	6.5	1	0.0	0.0	29,063	-1.1	1.0
Sector 81, Other Services, except Public Admin.	5	18.8	9.6	11	13.7	6.5	1	0.0	0.0	29,063	-1.1	1.0
811 Repair and maintenance	1	0.0	0.0	3	6.9	2.1	0	0.0	0.0	40,761	-4.6	1.5
812 Personal and laundry services	3	0.0	8.4	8	4.6	5.9	0	0.0	0.0	25,559	2.2	1.6
813 Membership associations and organizations	1	-	-	1	-	-	1	-	-	25,040	-	-
Public Administration	423	-0.4	0.1	5,959	1.5	2.4	2,501	0.3	2.1	26,501	4.8	4.1
Sector 92, Public Administration	423	-0.4	0.1	5,959	1.5	2.4	2,501	0.3	2.1	26,501	4.8	4.1
921 Executive, legislative and general government	285	-0.2	0.0	3,147	0.6	0.8	1,246	-2.3	-0.2	22,900	4.9	4.1
922 Justice, public order, and safety activities	65	-1.5	0.5	1,417	2.5	2.8	258	-0.4	2.1	33,982	3.8	4.1
923 Administration of human resource programs	28	0.0	0.7	983	3.6	7.0	825	4.1	5.9	26,535	4.9	3.0
924 Administration of environmental programs	23	0.0	0.9	163	-2.5	2.2	57	-2.6	-0.3	23,051	7.1	3.7
925 Community and housing program administration	21	0.0	-0.9	246	1.9	5.4	116	5.9	6.1	31,677	5.6	3.3
926 Administration of economic programs	1	0.0	0.0	2	-18.2	6.2	0	0.0	0.0	22,831	57.8	14.8
Sector 61. Educational Svcs - total, private and govt.	605	3.5	2.0	35,243	1.2	2.4	24,869	1.8	2.7	31,261	4.2	3.2

/1 In order to insure anonymity of U.I. Firms, it is sometimes necessary to combine certain NAICS industries.

/2 Railroad employees are covered by unemployment programs under the Railroad Retirement Act and thus not included in this publication.

/3 Female employment is not collected by Federal government.

/4 Avg is compounded annual average percent change.

n = Data is confidential.

- = There is no data to report.

NOTE: Changes may be influenced by reclassification of specific firms and or improved multiple worksite information.

NOTE: detail may not add to totals due to rounding.

Table 2

Vermont County and Town, 2003, total covered

annual average with percent change from 2002 and 1988, units, employment, women, average wage

NAICS Major Industry Group	Reporting			Employment						Average		
	2003	Units		2,003	Total		2,003	Women		2,003	Wage	
		Pct change			Pct change			Pct change			Pct change	
		From 2002 %	Avg/4 98-03 %		From 2002 %	Avg/4 98-03 %		From 2002 %	Avg/4 98-03 %		From 2002 %	Avg/4 98-03 %
Vermont	23,972	0.8	0.9	294,288	-0.4	1.0	144,276	0.7	1.6	32,090	3.4	3.8
01. Addison	1,277	1.5	2.2	13,907	0.6	2.0	6,925	0.7	1.4	30,576	3.5	3.9
Addison	36	2.9	12.2	222	6.0	7.8	93	3.3	-1.0	23,620	6.6	8.1
Bridport	34	-3.6	5.6	181	-10.6	6.3	70	-8.3	4.6	22,844	-4.2	3.3
Bristol	119	-5.2	1.0	1,198	3.6	2.7	675	8.4	3.1	24,878	-2.4	4.4
Cornwall	31	18.4	18.6	108	18.6	8.8	52	21.5	7.7	109,928	125.2	37.9
Ferrisburgh	73	0.0	0.7	384	-1.5	1.4	148	-7.1	-4.1	25,425	12.8	5.0
Goshen	6	15.0	6.2	18	22.2	-2.6	9	15.6	-9.8	16,840	-2.3	11.8
Granville	15	3.6	5.7	64	16.4	7.3	25	-12.3	0.6	19,396	-3.1	0.2
Hancock	20	0.0	-1.9	175	-8.8	1.0	74	-1.0	4.1	19,027	-3.5	0.3
Leicester	22	12.8	9.5	70	3.7	5.4	21	-12.5	0.0	26,113	9.7	6.5
Lincoln	28	15.8	11.4	115	22.6	6.2	61	24.6	5.0	20,179	-12.1	2.4
Middlebury	474	0.7	0.3	7,552	1.2	1.9	3,945	0.7	1.9	31,438	2.2	3.0
Monkton	25	6.5	4.6	121	23.5	6.1	62	28.4	6.0	22,049	-16.4	4.4
New Haven	68	4.2	3.3	576	6.5	3.9	314	-0.3	4.0	22,976	4.6	5.0
Orwell	36	5.1	7.7	253	-11.9	7.1	93	2.2	5.1	27,892	2.7	6.6
Panton	9	5.7	-0.5	39	7.4	1.6	12	-6.1	-0.4	17,896	-6.5	2.6
Ripton	16	14.3	6.4	49	13.6	8.9	30	0.8	15.8	18,482	-2.9	2.6
Salisbury	34	0.0	3.6	216	1.7	7.5	81	-3.9	7.4	20,924	2.0	1.5
Shoreham	36	1.4	0.4	184	-10.9	0.6	88	-5.9	2.5	24,424	2.8	1.1
Starksboro	23	-1.1	2.8	129	7.7	5.4	72	11.6	1.5	25,843	-2.5	5.6
Vergennes	139	0.5	1.4	2,096	-3.9	-0.9	950	-3.6	-2.5	36,645	3.0	4.6
Waltham	8	6.9	5.3	20	-2.0	1.3	5	-16.7	5.9	23,226	7.0	15.2
Weybridge	18	2.9	7.7	101	-1.5	3.8	38	-5.6	-7.5	26,663	7.6	14.0
Whiting	11	-2.2	-1.7	36	-20.5	-8.9	9	-34.6	-12.4	30,244	10.2	10.5
03. Bennington	1,566	-1.2	-0.3	17,977	-2.2	-0.1	9,492	-1.0	0.2	28,704	2.8	3.7
Arlington	109	-0.7	-0.8	836	-2.7	-4.7	390	1.1	-4.9	32,290	4.3	2.7
Bennington	637	-1.9	-0.7	10,388	-2.7	0.3	5,670	-2.0	0.6	29,320	3.5	3.7
Dorset	106	0.2	0.6	711	0.1	3.8	327	-5.2	2.3	28,734	5.9	2.7
Glastenbury	-	-	-	-	-	-	-	-	-	-	-	-
Landgrove	9	0.0	3.0	42	-9.1	-3.0	15	-21.1	-3.6	34,352	17.5	9.7
Manchester	466	0.1	0.2	4,513	0.7	0.6	2,487	2.4	0.8	27,599	0.3	4.5
Peru	21	-6.8	2.4	239	-1.7	0.6	93	6.3	3.9	19,054	5.1	5.3
Pownal	34	-2.8	-4.9	219	0.6	-3.7	106	2.9	-5.5	24,563	3.0	2.1
Readsboro	16	6.9	-0.3	76	0.9	-0.4	32	-8.0	-3.3	21,537	5.6	5.4
Rupert	13	12.8	-3.4	58	-5.5	-3.2	25	8.9	-4.1	21,937	-2.0	3.1
Sandgate	n	n	n	n	n	n	n	n	n	n	n	n
Searsburg	n	n	n	n	n	n	n	n	n	n	n	n
Shaftsbury	57	-5.4	-1.2	390	-18.2	-7.2	149	-20.6	-8.9	30,039	-1.1	1.6
Stamford	16	8.6	-0.3	84	-17.3	-6.0	38	0.0	-1.0	21,932	1.0	0.1

See footnotes at end of table.

Table 2

Vermont County and Town, 2003, total covered

annual average with percent change from 2002 and 1988, units, employment, women, average wage

NAICS Major Industry Group	Reporting			Employment						Average		
	2003	Units		2,003	Total		2,003	Women		2,003	Wage	
		Pct change			Pct change			Pct change			Pct change	
		From 2002 %	Avg/4 98-03 %		From 2002 %	Avg/4 98-03 %		From 2002 %	Avg/4 98-03 %		From 2002 %	Avg/4 98-03 %
Sunderland	19	-1.3	1.4	81	-7.5	0.1	38	12.6	1.2	34,948	9.3	3.6
Winhall	53	-0.9	3.7	308	2.6	1.2	109	9.3	2.6	26,386	6.0	3.7
Woodford	7	-28.9	-1.4	20	-21.5	-4.3	13	-10.5	-3.5	22,609	19.5	13.2
05. Caledonia	1,021	0.9	0.1	11,367	0.9	1.0	5,730	0.3	1.5	26,272	2.9	3.6
Barnet	42	11.3	1.5	224	14.2	2.8	99	11.6	0.1	24,022	-3.1	3.8
Burke	49	-2.5	-4.6	382	3.9	-0.7	173	-5.7	-0.2	16,620	5.5	-1.1
Danville	79	4.0	6.2	533	1.5	6.0	260	0.9	4.5	23,147	1.0	2.6
Groton	22	-5.5	-0.5	87	2.1	2.7	26	-11.3	-1.5	28,909	2.3	5.2
Hardwick	113	-1.3	2.0	820	1.6	1.3	447	0.2	1.1	22,074	4.5	4.0
Kirby	n	n	n	n	n	n	n	n	n	n	n	n
Lyndon	182	1.5	-0.4	2,859	3.0	1.1	1,289	5.7	2.1	26,845	1.2	2.9
Newark	7	0.0	0.7	37	-11.8	0.7	21	0.0	1.5	22,932	25.7	9.3
Peacham	14	0.0	3.9	70	5.7	5.6	33	24.3	2.8	21,068	-10.1	6.3
Ryegate	20	-15.2	-5.8	91	-14.5	-16.6	24	-13.0	-5.5	30,873	-16.6	0.1
St. Johnsbury	429	2.8	-0.6	5,800	-0.9	0.8	3,170	-1.5	1.3	27,741	4.4	4.2
Sheffield	6	0.0	-9.7	54	2.4	0.1	37	0.7	-2.9	18,770	2.3	4.6
Stannard	n	n	n	n	n	n	n	n	n	n	n	n
Sutton	12	-11.1	-4.0	148	25.6	16.0	49	-4.4	6.9	27,012	5.8	9.1
Walden	5	-16.7	0.0	39	-6.8	1.0	22	-13.0	-2.9	24,621	7.8	5.8
Waterford	31	-6.1	5.0	194	-4.4	2.1	75	-3.6	2.8	23,791	3.2	5.2
Wheelock	6	4.5	6.2	18	25.6	7.9	7	44.4	0.0	15,028	24.6	15.3
07. Chittenden	5,633	0.9	0.6	93,533	-0.6	1.2	43,698	0.9	1.8	37,432	2.9	3.5
Bolton	14	-6.9	-4.8	165	2.8	9.7	63	10.6	13.1	18,857	7.5	5.1
Buel's Gore	-	-	n	-	-	n	-	-	n	-	-	n
Burlington	1,495	0.5	-1.1	31,823	1.3	1.3	17,208	1.9	2.1	37,740	4.6	3.6
Charlotte	104	-3.5	1.2	520	-3.0	0.5	262	0.2	-3.0	33,532	-0.8	3.5
Colchester	504	-2.7	0.3	8,734	-0.4	2.0	4,015	-1.3	2.3	35,261	4.7	4.4
Essex	634	2.1	1.5	13,269	-9.0	-1.6	4,877	-5.2	-0.2	50,408	1.0	3.2
Hinesburg	107	3.1	1.7	938	0.0	0.8	494	6.8	2.6	29,803	4.8	4.0
Huntington	34	2.3	1.2	176	-20.3	2.7	85	-4.2	6.4	29,803	8.8	3.3
Jericho	108	-7.3	1.4	719	-3.8	2.9	350	-2.6	1.5	28,606	3.4	4.4
Milton	210	3.7	1.5	2,426	4.4	5.0	981	4.1	3.4	35,531	11.3	5.8
Richmond	138	6.6	3.4	1,094	2.6	4.4	537	1.5	1.9	29,495	7.4	7.8
St. George	9	-27.5	11.0	48	-36.6	3.8	19	-47.6	25.2	19,763	-20.4	-16.9
Shelburne	310	-0.9	-0.5	3,106	-2.6	-0.4	1,654	3.0	0.6	27,976	2.3	3.5
South Burlington	1,032	4.3	1.9	17,111	1.0	1.0	7,637	1.9	1.2	34,319	3.1	3.7
Underhill	66	-4.7	-1.7	318	-6.6	0.4	104	-12.1	2.8	39,795	4.3	10.7
Westford	30	7.2	1.2	224	-4.3	6.6	103	-5.1	5.5	23,652	3.0	1.3
Williston	665	-0.1	2.8	10,272	3.0	4.4	3,980	2.9	4.3	34,715	2.1	3.0
Winooski	177	2.3	-2.5	2,591	1.4	-1.2	1,331	3.2	-0.7	31,230	4.9	4.8

See footnotes at end of table.

Table 2

Vermont County and Town, 2003, total covered

annual average with percent change from 2002 and 1988, units, employment, women, average wage

NAICS Major Industry Group	Reporting			Employment						Average		
	2003	Units		2,003	Total		2,003	Women		2,003	Wage	
		Pct change			Pct change			Pct change			Pct change	
		From 2002 %	Avg/4 98-03 %		From 2002 %	Avg/4 98-03 %		From 2002 %	Avg/4 98-03 %		From 2002 %	Avg/4 98-03 %
09. Essex	172	-1.7	-0.1	1,419	-7.2	-3.6	607	-5.0	-1.8	25,500	-1.8	0.5
Averill	n	n	n	n	n	n	n	n	n	n	n	n
Avery's Gore	-	-	-	-	-	-	-	-	-	-	-	-
Bloomfield	n	n	n	n	n	n	n	n	n	n	n	n
Brighton	47	-6.5	-1.4	268	-17.6	-2.1	143	-21.1	-0.9	20,878	-1.6	3.7
Brunswick	-	-	n	-	-	n	-	-	n	-	-	n
Canaan	38	6.3	3.7	702	0.7	-2.2	247	10.3	-1.2	27,334	-7.8	0.7
Concord	25	0.0	3.3	190	0.4	9.4	102	-4.7	5.0	22,308	4.7	3.6
East Haven	5	-13.0	4.6	25	-13.0	3.2	22	-4.3	7.2	14,401	4.5	4.1
Ferdinand	-	-	-	-	-	-	-	-	-	-	-	-
Granby	6	20.0	-5.0	18	16.2	-6.7	7	11.5	6.7	34,477	-10.4	5.3
Guildhall	10	-2.4	-0.5	31	2.5	-1.4	17	4.6	-4.1	22,938	0.2	7.6
Lemington	-	-	-	-	-	-	-	-	-	-	-	-
Lewis	-	-	-	-	-	-	-	-	-	-	-	-
Lunenburg	20	-12.1	-4.0	110	-36.6	-19.5	56	-15.3	-12.0	24,245	5.4	-5.1
Maidstone	n	n	n	n	n	n	n	n	n	n	n	n
Norton	15	3.6	-0.7	59	11.7	-0.4	8	-18.9	-10.1	42,438	3.5	6.2
Victory	n	n	n	n	n	n	n	n	n	n	n	n
Warner's Grant	-	-	-	-	-	-	-	-	-	-	-	-
Warren Gore	-	-	-	-	-	-	-	-	-	-	-	-
11. Franklin	1,186	-4.4	1.3	15,352	0.1	2.8	7,593	0.2	2.7	30,102	4.8	4.2
Bakersfield	16	1.6	-1.5	86	-1.6	-1.9	61	2.9	-1.6	18,511	6.3	3.0
Berkshire	11	9.8	-6.2	82	27.9	1.6	50	12.9	-0.7	19,909	6.8	1.6
Enosburg	99	-12.2	0.4	1,112	-2.2	6.1	557	-3.6	6.9	23,366	6.7	2.0
Fairfax	87	6.8	6.0	646	6.9	4.7	305	-0.4	3.9	28,804	5.6	7.2
Fairfield	31	-6.1	3.6	159	6.3	6.6	85	2.7	7.3	23,071	7.1	1.5
Fletcher	8	6.7	-4.4	45	1.7	8.1	32	3.2	6.1	19,764	-1.3	-2.6
Franklin	25	1.0	2.9	157	1.5	5.8	86	2.7	7.8	18,672	9.2	2.9
Georgia	55	0.0	-0.1	636	-11.6	-6.7	243	-10.9	-7.4	34,791	6.0	4.8
Highgate	49	-10.1	1.5	673	-7.0	7.3	368	-3.5	11.7	30,977	4.1	3.9
Montgomery	34	6.3	0.6	161	-4.7	-0.1	92	7.3	0.7	18,322	-5.3	2.1
Richford	45	-13.5	-2.2	685	-2.8	2.6	341	3.9	2.9	26,988	4.0	3.2
St. Albans City	429	-5.7	0.3	7,702	1.9	4.2	3,876	0.4	3.5	32,194	4.5	4.8
St. Albans Town	104	-0.2	9.7	1,318	1.7	2.9	710	3.5	2.1	28,991	4.6	4.9
Sheldon	31	-16.9	-0.6	348	-6.5	-0.3	114	-12.3	-1.7	35,656	9.0	4.0
Swanton	163	-2.2	1.1	1,543	-1.1	-1.7	675	3.3	-1.9	28,426	5.1	2.9
13. Grand Isle	198	1.8	0.6	1,051	3.4	3.5	531	2.5	1.7	22,396	4.1	3.9
Alburg	44	-9.7	0.7	224	-1.3	3.1	127	4.1	4.0	20,155	4.0	3.6
Grand Isle	42	5.7	1.3	247	8.9	7.3	107	12.1	5.4	26,926	8.7	3.8
Isle La Motte	19	11.6	0.3	50	17.2	-1.0	29	13.7	5.2	18,514	-5.0	1.8

See footnotes at end of table.

Table 2

Vermont County and Town, 2003, total covered

annual average with percent change from 2002 and 1988, units, employment, women, average wage

NAICS Major Industry Group	Reporting			Employment						Average		
	2003	Units		2,003	Total		2,003	Women		2,003	Wage	
		Pct change			Pct change			Pct change			Pct change	
		From 2002 %	Avg/4 98-03 %		From 2002 %	Avg/4 98-03 %		From 2002 %	Avg/4 98-03 %		From 2002 %	Avg/4 98-03 %
North Hero	33	12.8	3.2	225	-0.1	3.1	101	-13.9	-4.6	22,324	-0.8	4.2
South Hero	60	0.4	-1.1	306	3.4	2.2	167	5.7	2.0	21,057	4.5	3.4
15. Lamoille	1,019	1.4	-0.2	10,562	-0.5	0.8	5,763	2.3	1.8	25,421	3.7	4.9
Belvidere	5	61.5	11.8	16	0.5	5.1	10	-15.6	1.7	22,105	2.5	1.4
Cambridge	123	2.3	1.0	1,289	-1.6	0.3	827	4.7	7.4	21,615	1.8	3.6
Eden	15	11.3	0.0	81	14.6	2.4	57	15.1	5.4	19,578	5.1	4.5
Elmore	8	-5.7	-7.6	24	8.0	-17.3	15	20.4	-16.1	17,707	-22.0	5.4
Hyde Park	81	-1.2	2.5	702	6.9	6.1	345	7.9	5.3	28,351	2.9	4.5
Johnson	81	0.9	-1.4	875	-1.5	-1.0	466	7.7	-0.4	27,434	5.3	4.1
Morristown	292	3.0	0.0	3,525	-2.1	0.7	2,019	-2.3	1.1	27,655	5.4	5.5
Stowe	365	-0.4	-0.6	3,811	-0.4	0.9	1,926	3.8	0.9	23,948	1.9	4.9
Waterville	14	7.7	-0.7	41	5.6	-2.5	21	25.0	-4.3	25,999	-4.0	7.0
Wolcott	35	1.5	-3.5	198	8.8	2.2	79	-1.3	-1.9	22,977	18.4	6.6
17. Orange	856	0.9	1.9	7,982	-1.4	1.1	4,104	-1.4	1.4	26,479	3.7	3.9
Bradford	123	0.4	0.7	1,439	-5.4	0.8	738	-8.1	-0.8	26,196	2.5	4.5
Braintree	20	17.6	12.2	103	10.7	4.2	42	-5.1	2.2	23,128	9.9	5.9
Brookfield	26	2.9	5.6	127	-14.1	2.7	63	-7.7	4.7	28,122	1.2	3.0
Chelsea	48	-3.0	0.2	340	-4.8	-0.6	177	-5.6	-0.2	23,672	6.0	3.1
Corinth	27	-0.9	-0.7	160	-8.0	2.1	110	-6.4	3.7	22,057	-2.8	0.7
Fairlee	68	3.4	2.9	618	1.2	2.1	287	-0.8	4.7	24,881	6.7	6.9
Newbury	63	-6.7	0.0	629	0.1	0.9	369	1.7	1.3	22,820	0.3	4.2
Orange	12	17.5	4.9	47	12.5	0.8	31	29.5	3.2	19,869	-6.9	3.0
Randolph	192	2.0	2.4	2,760	-2.6	0.1	1,504	-1.8	1.1	28,805	4.7	3.8
Strafford	38	-1.3	6.5	139	6.1	4.2	79	4.3	5.3	23,093	0.2	5.4
Thetford	85	0.6	-0.8	630	4.6	1.8	266	10.3	2.0	28,936	6.8	4.1
Topsham	18	18.0	4.8	70	31.2	3.4	20	20.0	-1.9	20,936	6.2	-0.5
Tunbridge	32	-5.9	1.3	193	-2.6	3.6	99	-10.5	1.2	23,305	0.4	4.4
Vershire	22	-3.3	2.7	103	9.6	3.0	46	12.9	-1.1	20,244	-0.9	2.6
Washington	17	1.5	5.4	88	-6.7	4.4	38	0.7	-3.6	22,214	-5.0	4.3
West Fairlee	8	7.1	0.0	31	-0.5	-0.8	14	1.8	-2.6	15,351	-5.4	-3.2
Williamstown	58	2.2	2.0	506	5.1	3.7	223	11.1	8.1	27,820	5.6	2.5
19. Orleans	926	2.7	1.4	9,578	1.3	2.2	5,032	-0.2	2.5	26,114	6.4	4.1
Albany	15	-1.6	-3.8	54	-8.3	-3.1	27	-14.4	-6.3	22,473	13.0	-0.3
Barton	121	1.7	0.4	1,434	0.7	-1.5	727	2.9	0.2	22,883	-2.8	2.2
Brownington	11	10.0	14.9	33	16.4	11.5	19	18.5	11.8	18,007	9.5	1.3
Charleston	14	-16.4	3.1	93	-2.9	3.5	44	-7.9	1.4	20,195	8.6	7.3
Coventry	17	13.1	0.0	101	16.4	-2.7	45	16.3	4.8	22,143	-2.0	-0.8
Craftsbury	33	14.7	0.2	247	3.2	0.6	153	-2.2	1.3	20,572	5.9	3.6
Derby	162	1.4	1.9	1,640	-2.3	0.6	660	-6.2	-0.5	29,556	7.7	5.1
Glover	24	12.9	13.0	162	17.7	9.1	103	9.9	5.2	19,485	5.8	4.6
Greensboro	39	-3.1	1.3	253	-2.2	1.5	164	-3.7	1.6	20,832	6.4	4.7

See footnotes at end of table.

Table 2

Vermont County and Town, 2003, total covered

annual average with percent change from 2002 and 1988, units, employment, women, average wage

NAICS Major Industry Group	Reporting			Employment						Average		
	2003	Units		2,003	Total		2,003	Women		2,003	Wage	
		Pct change			Pct change			Pct change			Pct change	
		From 2002 %	Avg/4 98-03 %		From 2002 %	Avg/4 98-03 %		From 2002 %	Avg/4 98-03 %		From 2002 %	Avg/4 98-03 %
Holland	8	7.1	10.8	46	0.2	16.1	23	-4.2	10.8	16,169	4.6	0.8
Irasburg	32	5.0	1.7	183	-4.6	5.1	57	-0.4	3.6	25,498	6.0	5.8
Jay	16	32.7	0.6	255	6.1	4.6	125	3.3	4.5	18,186	-1.3	3.5
Lowell	10	-9.3	3.4	56	-0.3	4.8	39	-0.6	1.6	14,608	5.2	7.6
Morgan	14	9.8	4.0	52	7.3	4.9	29	4.5	5.0	22,541	27.3	12.5
Newport City	294	4.3	0.2	4,252	2.4	3.5	2,442	0.5	3.3	28,599	9.8	4.7
Newport Town	54	-9.7	4.8	360	-4.4	8.2	205	-4.9	13.3	21,117	2.0	3.3
Troy	44	-0.6	-1.9	265	3.9	0.2	119	-1.7	-2.0	24,601	4.1	2.1
Westfield	15	18.4	8.8	56	6.7	13.3	35	15.6	19.0	18,949	-5.0	4.7
Westmore	5	0.0	4.6	37	15.5	3.5	20	27.9	21.9	16,489	16.5	2.7
21. Rutland	2,448	-0.9	0.4	28,552	-1.3	-0.2	13,796	-1.1	0.4	30,074	4.7	4.0
Benson	14	-9.8	3.6	122	7.2	6.1	81	14.5	12.4	19,871	-4.7	1.1
Brandon	121	-4.7	-1.4	1,502	-9.5	-6.1	788	-5.6	-3.2	25,855	5.2	2.5
Castleton	129	2.4	3.0	1,247	-0.3	2.3	549	0.9	-0.2	27,208	7.8	5.4
Chittenden	29	-8.7	0.5	150	4.8	0.0	83	6.7	1.6	21,334	3.7	3.2
Clarendon	82	2.8	1.1	1,065	-4.3	2.3	523	-1.3	4.8	32,003	16.1	4.6
Danby	39	8.3	2.0	239	-0.3	0.8	88	4.2	1.2	28,261	2.8	4.3
Fair Haven	100	3.4	2.5	974	1.1	1.0	464	-2.9	0.7	23,294	2.4	4.3
Hubbardton	7	16.7	7.0	16	17.6	-0.7	8	50.0	5.7	13,803	-28.2	9.7
Ira	3	-29.4	-10.6	11	2.3	-2.6	1	-54.5	-18.6	17,758	-3.8	2.6
Mendon	49	3.7	0.8	353	-1.0	-1.4	144	-4.8	-5.9	24,332	7.3	8.7
Middletown Springs	24	-1.0	2.7	86	18.6	10.2	39	17.3	4.2	22,715	-4.8	5.4
Mount Holly	33	-5.0	3.5	175	2.7	1.3	72	15.2	5.1	25,540	3.0	3.8
Mount Tabor	n	n	n	n	n	n	n	n	n	n	n	n
Pawlet	51	5.2	1.4	311	0.0	-2.2	138	0.2	2.4	24,442	5.9	4.0
Pittsfield	23	0.0	-5.0	139	34.1	-5.6	51	61.1	-10.0	32,483	20.5	2.4
Pittsford	85	-6.1	-1.5	795	-1.3	0.1	202	-10.2	0.3	34,151	7.3	5.2
Poultney	104	-2.6	-0.5	967	-8.9	-0.2	422	-3.8	-1.1	25,953	4.0	4.2
Proctor	34	-11.8	-0.9	372	-3.9	2.0	171	4.6	1.4	43,085	6.4	3.6
Rutland City	986	-1.6	-0.2	13,062	-0.2	0.2	7,089	-1.1	0.9	32,311	3.9	3.9
Rutland Town	160	-1.8	0.4	3,620	1.1	0.9	1,375	3.3	1.3	33,815	1.7	3.2
Killington	161	4.0	1.1	1,953	-5.0	-3.1	925	-5.1	-2.6	21,816	3.9	3.9
Shrewsbury	29	4.5	-1.0	219	17.1	5.3	89	24.0	4.6	24,562	6.1	3.9
Sudbury	6	-8.3	-8.3	39	1.3	-6.8	17	1.5	1.6	27,655	-0.6	0.5
Tinmouth	9	0.0	16.9	34	-10.4	9.1	22	0.0	4.1	17,348	19.0	6.5
Wallingford	70	-0.7	0.9	400	-8.6	1.4	163	-13.2	4.3	24,989	13.3	3.7
Wells	26	-1.9	3.7	110	-7.9	2.6	53	-4.5	6.0	20,283	12.3	2.9
West Rutland	69	1.1	1.1	566	-4.6	-0.5	229	-4.8	-1.7	25,144	2.9	4.8
West Haven	n	n	n	n	n	n	n	n	n	n	n	n

See footnotes at end of table.

Table 2

Vermont County and Town, 2003, total covered

annual average with percent change from 2002 and 1988, units, employment, women, average wage

NAICS Major Industry Group	Reporting			Employment						Average		
	2003	Units		2,003	Total		2,003	Women		2,003	Wage	
		Pct change			Pct change			Pct change			Pct change	
		From 2002 %	Avg/4 98-03 %		From 2002 %	Avg/4 98-03 %		From 2002 %	Avg/4 98-03 %		From 2002 %	Avg/4 98-03 %
23. Washington	2,481	1.8	0.6	31,927	-0.7	1.6	15,937	-0.1	2.4	31,902	4.5	4.5
Barre City	433	0.6	-0.9	4,759	-2.8	0.6	2,229	-1.0	1.0	28,960	3.4	4.0
Barre Town	152	-1.0	-0.7	1,881	-8.4	-1.8	676	-2.0	0.9	29,899	-3.7	3.0
Berlin	215	0.2	0.9	5,032	0.2	2.6	3,041	-0.4	1.9	30,611	5.2	4.8
Cabot	27	11.5	5.7	521	22.9	7.1	201	8.5	4.6	30,475	5.6	3.0
Calais	31	0.8	-3.5	91	-10.1	-2.9	41	-3.6	4.7	29,447	6.8	8.4
Duxbury	13	6.1	-0.4	181	0.1	3.6	109	-3.5	2.8	33,955	6.9	3.1
East Montpelier	60	3.9	2.1	679	3.0	5.0	265	-4.3	0.9	30,168	7.5	3.2
Fayston	32	-0.8	6.4	216	25.7	8.0	97	10.0	11.0	21,176	2.0	-0.7
Marshfield	26	2.0	0.8	193	-2.6	-1.1	130	-4.8	0.9	22,466	4.1	1.1
Middlesex	31	-3.9	-0.5	234	14.7	2.7	64	0.8	-4.0	35,100	1.9	5.0
Montpelier	614	1.6	0.1	9,294	0.4	1.6	4,863	1.5	3.4	36,368	5.5	5.0
Moretown	50	7.6	2.5	374	17.0	7.6	123	15.3	0.3	35,065	3.8	6.6
Northfield	132	-1.7	-0.4	1,820	1.3	1.6	988	0.8	1.7	27,910	5.4	4.4
Plainfield	46	1.7	4.7	387	-3.0	1.1	189	-5.0	-2.3	25,571	1.8	3.4
Roxbury	17	0.0	11.2	87	-0.8	11.8	40	-6.5	7.3	19,524	7.7	-3.5
Waitsfield	210	8.1	2.6	1,292	-3.1	1.5	614	-4.8	0.5	28,555	2.4	5.2
Warren	99	10.9	1.1	852	-2.0	0.1	421	7.6	1.1	19,559	10.7	2.9
Waterbury	266	-0.6	1.9	3,869	-3.2	1.7	1,778	-3.1	5.5	35,389	5.4	5.1
Woodbury	10	0.0	-3.7	66	9.5	-2.1	32	14.4	-0.9	21,356	-11.4	5.2
Worcester	20	8.1	2.1	99	0.3	3.3	39	-3.7	0.5	27,705	8.5	1.3
25. Windham	1,914	0.6	0.1	22,877	-2.3	-1.0	11,233	-1.3	-0.1	31,883	3.1	4.2
Athens	n	n	n	n	n	n	n	n	n	n	n	n
Brattleboro	746	0.5	-0.9	11,191	-3.4	-2.7	5,518	-2.8	-1.8	35,462	3.8	4.7
Brookline	10	2.6	-2.8	60	-2.3	2.2	36	-12.1	3.2	11,769	3.5	-1.3
Dover	104	-2.1	-0.1	1,226	-3.2	-1.5	605	-5.8	-2.5	20,295	8.6	4.0
Dummerston	39	-0.6	-1.0	253	0.0	1.0	103	-0.2	3.2	31,603	7.8	6.8
Grafton	22	4.7	0.0	194	-4.7	-0.9	82	-18.8	-1.7	28,876	5.1	3.8
Guilford	46	2.2	5.0	181	-15.3	0.6	77	-11.5	-1.7	29,088	9.6	7.4
Halifax	10	-9.1	-3.6	57	-1.2	2.0	37	5.7	3.6	17,282	3.6	2.2
Jamaica	34	8.0	4.0	168	13.6	5.8	73	25.4	7.7	22,211	9.8	3.0
Londonderry	100	1.5	0.3	537	4.3	-1.0	246	4.0	-2.1	25,567	6.6	4.8
Marlboro	33	0.8	4.1	292	-18.4	-0.8	178	-13.5	-1.5	26,196	19.2	8.8
Newfane	54	15.7	4.0	359	7.8	6.5	188	8.7	6.5	24,512	-1.0	4.3
Putney	109	-3.8	2.1	1,195	-2.4	2.1	613	-0.8	2.0	28,296	3.1	4.9
Rockingham	200	1.8	-0.3	2,444	2.4	-0.7	1,334	2.7	0.4	27,520	4.2	3.1
Somerset	-	-	-	-	-	-	-	-	-	-	-	-
Stratton	n	n	n	n	n	n	n	n	n	n	n	n
Townshend	49	1.6	1.7	597	-0.6	0.9	367	-0.2	0.5	34,813	7.4	6.6
Vernon	44	-2.8	-0.5	979	-3.4	2.4	267	4.8	2.2	57,875	-6.2	3.1
Wardsboro	23	-8.8	-3.3	161	10.2	7.6	85	12.2	25.2	20,143	-6.7	2.6

See footnotes at end of table.

Table 2

Vermont County and Town, 2003, total covered

annual average with percent change from 2002 and 1988, units, employment, women, average wage

NAICS Major Industry Group	Reporting			Employment						Average		
	2003	Units		2,003	Total		2,003	Women		2,003	Wage	
		Pct change			Pct change			Pct change			Pct change	
		From 2002 %	Avg/4 98-03 %		From 2002 %	Avg/4 98-03 %		From 2002 %	Avg/4 98-03 %		From 2002 %	Avg/4 98-03 %
Westminster	72	5.5	5.5	720	-8.8	0.2	291	-7.3	5.7	28,191	0.6	3.2
Whitingham	40	-0.6	2.7	284	3.8	4.2	149	9.0	8.4	23,387	4.3	-0.9
Wilmington	151	-1.6	-1.3	1,024	0.7	1.7	537	0.8	3.5	21,587	5.6	2.2
Windham	6	15.0	7.5	33	3.4	9.6	15	3.4	27.6	19,335	7.9	-2.2
27. Windsor	2,401	2.0	0.7	23,259	0.8	0.2	11,101	2.0	1.0	30,083	3.1	3.8
Andover	14	12.5	1.6	43	-1.9	3.0	15	7.4	10.0	26,041	0.1	-4.3
Baltimore	n	n	n	n	n	n	n	n	n	n	n	n
Barnard	31	0.8	1.2	156	0.9	1.4	79	1.3	1.3	28,297	2.3	5.0
Bethel	86	-3.7	-0.5	941	-2.0	0.5	393	2.5	0.5	30,745	0.2	2.7
Bridgewater	51	9.6	0.2	296	1.5	-7.0	131	5.2	-6.5	25,866	2.7	6.1
Cavendish	44	0.0	3.1	463	-2.6	-1.7	199	-3.5	-3.8	27,264	5.9	3.5
Chester	132	-0.6	0.3	1,011	-1.6	-0.2	531	-2.4	-1.9	27,510	3.3	5.6
Hartford	452	2.4	1.4	5,858	1.6	1.0	2,213	3.1	2.1	35,282	3.6	4.6
Hartland	71	-1.0	3.8	435	-3.2	4.0	207	6.3	3.1	30,038	-0.7	4.2
Ludlow	171	0.9	0.7	1,863	1.4	1.3	877	-0.2	1.5	23,573	3.6	3.7
Norwich	132	2.3	0.5	848	3.3	2.0	439	7.7	0.1	29,244	1.0	2.5
Plymouth	24	2.1	2.2	171	0.1	-2.1	85	36.5	5.4	24,529	3.0	2.5
Pomfret	35	9.5	2.7	191	8.2	4.9	111	15.0	9.6	24,706	0.7	1.1
Reading	20	1.3	-0.5	83	5.0	5.1	46	9.6	7.0	19,748	0.8	4.5
Rochester	64	10.4	0.1	405	11.0	1.0	226	7.2	1.2	26,222	-4.1	3.4
Royalton	88	-1.7	-0.9	907	0.8	1.1	428	1.7	1.6	33,299	2.3	4.3
Sharon	36	-8.4	0.0	237	-0.2	5.4	95	8.9	7.6	25,916	2.2	3.6
Springfield	341	1.8	-0.1	4,385	-0.4	-2.1	2,379	-0.6	0.3	30,311	3.8	2.2
Stockbridge	19	7.2	-1.8	105	27.4	-1.9	45	25.4	-0.3	26,190	-11.7	-0.6
Weathersfield	72	4.7	1.8	404	4.3	1.5	166	10.0	4.5	28,642	10.2	4.9
Weston	40	7.5	1.7	236	0.7	4.2	144	7.1	3.8	18,756	-1.6	1.5
West Windsor	41	4.5	5.2	300	-4.2	0.6	127	-6.4	1.4	24,793	7.9	2.4
Windsor	140	5.1	1.1	1,558	4.0	0.2	936	3.7	2.6	29,601	3.1	5.0
Woodstock	298	1.0	-0.3	2,358	-1.5	0.3	1,233	0.0	-0.1	27,927	3.7	5.1
99. Other /1	875	7.7	9.0	4,945	15.2	9.7	2,737	31.0	19.5	29,223	-3.3	-0.4
Other /1	875	7.7	9.0	4,945	15.2	9.7	2,737	31.0	19.5	29,223	-3.3	-0.4

/1 Location of business is statewide, countywide.

/2 Avg is compounded annual average percent change.

/4 Avg is compounded annual average percent change.

n = Data is confidential.

- = There is no data to report.

NOTE: Changes may be influenced by reclassification of specific firms and or improved multiple worksite information.

NOTE: detail may not add to totals due to rounding.

Table 3

Vermont County and Industry Sectors, 2003, total covered

annual average with percent change from 2002 and 1988, units, employment, women, average wage

NAICS Major Industry Group	Reporting			Employment						Average		
	2003	Units		Total			Women			Wage		
		Pct change		Pct change			Pct change			Pct change		
		From	Avg/2	2,003	From	Avg/2	2,003	From	Avg/2	2,003	From	Avg/2
	2002	98-03		2002	98-03		2002	98-03		2002	98-03	
	%	%		%	%		%	%		%	%	
Vermont - Total Covered	23,972	0.8	0.9	294,288	-0.4	1.0	144,276	0.7	1.6	32,090	3.4	3.8
Private Ownership	22,279	0.8	0.9	244,531	-0.8	0.7	117,224	0.5	1.2	31,571	3.1	3.8
Goods Producing - Private	4,558	2.3	1.6	55,811	-4.7	-1.9	13,608	-5.3	-2.0	40,344	2.3	3.6
Natural Resources and Mining	422	0.7	3.7	2,946	-1.3	0.9	718	-2.4	-2.1	26,813	2.6	2.5
Sector 11, Agriculture, forestry, fishing & hunting	354	1.3	4.5	2,174	0.8	2.1	632	-2.1	-2.7	21,662	2.3	3.1
Sector 21, Mining	68	-2.2	0.1	772	-6.8	-2.0	86	-4.2	2.2	41,314	5.8	3.2
Construction	2,912	4.1	2.8	15,378	3.3	2.4	1,766	4.2	4.0	33,388	1.7	3.7
Sector 23, Construction	2,912	4.1	2.8	15,378	3.3	2.4	1,766	4.2	4.0	33,388	1.7	3.7
Manufacturing	1,225	-1.3	-1.6	37,486	-7.9	-3.6	11,124	-6.9	-2.8	44,261	3.3	4.1
Durable Goods	803	-1.1	-0.6	26,741	-9.0	-3.6	7,281	-7.7	-2.2	47,773	3.1	4.2
Non-Durable Goods	423	-1.7	-3.3	10,745	-5.0	-3.7	3,843	-5.3	-4.0	35,521	4.9	3.5
Service Providing - Private	17,721	0.4	0.7	188,720	0.4	1.6	103,616	1.4	1.7	28,977	4.0	4.3
Trade, Transportation, and Utilities	5,598	-1.0	-0.7	58,075	-0.9	0.9	24,033	-1.0	0.4	28,671	3.5	4.2
Sector 42, Wholesale trade	1,315	0.9	1.2	10,256	2.3	1.4	2,824	1.5	0.5	44,235	3.5	5.2
Sector 44-45, Retail trade	3,669	-1.5	-1.3	39,519	-1.5	1.0	19,033	-1.3	0.4	22,390	3.6	4.2
Sector 48-49, Transportation & warehousing	562	-1.8	-1.0	6,574	-2.9	0.0	1,782	-1.5	1.7	31,636	3.4	3.3
Sector 22, Utilities	52	2.0	-1.6	1,726	1.0	-1.4	396	-1.5	-3.3	68,710	-2.4	4.2
Information	510	-1.4	2.0	6,495	-2.4	0.2	3,255	-2.2	-0.1	37,227	4.0	4.1
Sector 51, Information	510	-1.4	2.0	6,495	-2.4	0.2	3,255	-2.2	-0.1	37,227	4.0	4.1
Financial Activities	1,654	3.3	0.8	12,989	0.7	0.5	8,160	1.0	0.5	44,513	7.0	5.4
Sector 52, Finance and Insurance	941	3.7	0.7	9,888	0.5	0.3	6,780	1.3	0.4	49,841	7.9	5.5
Sector 53, Real estate & rental & leasing	713	2.6	1.0	3,101	1.0	1.2	1,380	-0.2	1.3	27,523	2.3	5.3
Professional and Business Services	3,545	1.9	3.0	20,394	0.1	1.1	9,047	0.0	0.5	38,298	4.9	4.9
Sector 54, Professional, scientific, & technical svcs.	2,425	1.1	3.1	12,230	-0.7	2.9	6,073	0.3	2.8	47,264	7.6	3.9
Sector 55, Mgt. of companies & enterprises	21	-11.8	-5.5	282	-7.7	2.3	128	-4.5	-0.3	59,466	3.3	8.0
Sector 56, Administrative & waste services	1,100	4.0	2.8	7,882	1.7	-1.3	2,846	-0.5	-3.5	23,626	-1.1	4.6
Education & Health Services	2,128	3.7	2.0	48,698	3.9	4.1	36,619	4.0	4.1	30,453	2.3	3.5
Sector 61, Educational services	301	7.5	4.7	9,005	1.3	2.4	5,243	2.8	2.4	31,041	3.3	3.4
Sector 62, Health care & social assistance	1,827	3.1	1.6	39,693	4.6	4.6	31,377	4.2	4.4	30,320	2.1	3.5
Leisure and Hospitality	2,199	2.2	0.4	32,725	-1.0	0.4	17,629	1.1	0.8	15,223	3.6	3.5
Sector 71, Arts, entertainment, & recreation	373	2.5	2.4	3,691	1.4	4.4	1,847	3.6	6.0	16,397	4.3	0.6
Sector 72, Accommodation & food services	1,826	2.1	0.1	29,034	-1.3	0.0	15,781	0.8	0.2	15,073	3.5	3.8
Other Services	2,089	-4.9	-0.5	9,343	-1.6	0.9	4,874	0.5	1.5	23,677	5.1	4.3
Sector 81, Other services, except public admin.	2,089	-4.9	-0.5	9,343	-1.6	0.9	4,874	0.5	1.5	23,677	5.1	4.3
Government Ownership	1,693	1.3	0.8	49,757	1.7	2.5	27,053	1.2	3.3	34,637	4.3	3.7
Federal Government /1	614	3.7	2.0	6,250	5.4	2.8	-	-	-	47,621	3.1	3.5
491 Postal service	407	1.1	1.2	2,204	-4.6	-1.5	-	-	-	40,934	4.2	3.0
Other Federal Government	208	9.4	3.5	4,046	11.8	5.6	-	-	-	51,265	1.3	3.2
State Government	254	-0.1	0.1	15,310	1.9	2.7	7,682	2.2	5.1	39,573	3.9	4.2
Sector 61, Educational Services	29	-0.9	-1.3	5,605	3.0	2.9	3,100	4.8	3.5	37,880	4.4	2.9
Other State Government	225	0.0	0.3	9,705	1.2	2.6	4,582	0.6	6.3	40,551	3.7	4.9
Local Government	825	0.0	0.3	28,198	0.9	2.3	19,371	0.8	2.6	29,080	4.5	3.4
Sector 61, Educational Services	275	-0.2	-0.2	20,632	0.7	2.3	16,526	0.9	2.7	29,559	4.3	3.1
Other Local Government	550	0.0	0.5	7,565	1.4	2.3	2,845	0.2	2.0	27,773	5.2	4.1

See footnotes at end of table.

Table 3

Vermont County and Industry Sectors, 2003, total covered

annual average with percent change from 2002 and 1998, units, employment, women, average wage

NAICS Major Industry Group	Reporting			Employment						Average		
	2003	Units		Total			Women			Wage		
		Pct change		Pct change			Pct change			Pct change		
		From	Avg/2	2,003	From	Avg/2	2,003	From	Avg/2	2,003	From	Avg/2
	2002	98-03		2002	98-03		2002	98-03		2002	98-03	
	%	%		%	%		%	%		%	%	
01. Addison - Total Covered	1,277	1.5	2.2	13,907	0.6	2.0	6,925	0.7	1.4	30,576	3.5	3.9
Private Ownership	1,158	1.6	2.3	11,881	-0.3	1.8	5,605	-0.8	0.9	30,900	4.3	4.1
Goods Producing - Private	316	2.4	4.1	3,425	-1.6	1.5	930	-3.2	-0.5	36,293	1.1	3.7
Natural Resources and Mining	78	0.3	5.5	542	2.6	6.6	110	-0.2	4.7	23,107	0.1	4.6
Sector 11, Agriculture, forestry, fishing & hunting	71	-0.4	5.9	499	2.1	7.8	107	-0.9	5.0	22,477	0.4	5.2
Sector 21, Mining	8	6.9	2.1	43	8.4	-3.7	3	30.0	-1.5	30,377	-3.8	4.1
Construction	175	6.6	5.6	789	0.6	6.0	99	1.3	5.9	33,020	1.4	4.0
Sector 23, Construction	175	6.6	5.6	789	0.6	6.0	99	1.3	5.9	33,020	1.4	4.0
Manufacturing	63	-5.2	-0.8	2,094	-3.4	-0.9	721	-4.2	-1.9	40,938	1.7	4.2
Durable Goods	38	-5.0	2.1	1,229	-6.9	-2.2	439	-5.1	-2.3	45,032	3.1	5.5
Non-Durable Goods	25	-5.6	-4.3	866	2.1	1.1	282	-2.8	-1.3	35,126	0.7	2.3
Service Providing - Private	842	1.4	1.7	8,455	0.2	2.0	4,675	-0.3	1.2	28,715	6.1	4.4
Trade, Transportation, and Utilities	278	-0.7	0.4	2,307	-4.7	-0.3	910	-5.2	-2.7	26,299	6.4	3.8
Sector 42, Wholesale trade	54	-5.7	-1.4	275	-5.0	0.0	63	-0.8	-2.1	35,900	2.6	3.1
Sector 44-45, Retail trade	188	0.1	1.4	1,755	-4.8	-0.2	781	-5.4	-3.1	24,727	9.0	4.4
Sector 48-49, Transportation & warehousing	n	n	n	n	n	n	n	n	n	n	n	n
Sector 22, Utilities	n	n	n	n	n	n	n	n	n	n	n	n
Information	23	4.7	10.8	116	-4.2	0.6	54	-14.1	-4.9	25,929	0.1	1.7
Sector 51, Information	23	4.7	10.8	116	-4.2	0.6	54	-14.1	-4.9	25,929	0.1	1.7
Financial Activities	69	3.4	1.4	489	7.2	4.3	308	4.1	2.9	34,181	6.0	4.5
Sector 52, Finance and Insurance	40	1.9	1.8	365	4.4	3.4	240	4.2	2.8	38,923	5.9	4.7
Sector 53, Real estate & rental & leasing	29	5.5	0.7	124	16.1	7.2	68	3.4	3.5	20,257	15.8	6.5
Professional and Business Services	158	3.1	4.9	618	-0.8	1.2	291	-4.3	-2.3	47,164	35.7	9.6
Sector 54, Professional, scientific, & technical svcs.	116	5.2	7.9	414	-0.7	2.2	232	-3.3	-0.4	58,222	44.5	10.5
Sector 55, Mgt. of companies & enterprises	-	-	-	-	-	-	-	-	-	-	-	-
Sector 56, Administrative & waste services	42	-2.4	-1.5	203	-1.0	-0.7	59	-7.8	-8.2	24,653	4.5	4.2
Education & Health Services	119	5.8	1.3	3,304	3.4	3.6	2,192	1.8	3.3	32,761	-0.4	3.1
Sector 61, Educational services	n	n	n	n	n	n	n	n	n	n	n	n
Sector 62, Health care & social assistance	n	n	n	n	n	n	n	n	n	n	n	n
Leisure and Hospitality	98	10.2	2.2	1,292	0.9	1.6	723	2.1	1.5	14,291	4.8	4.2
Sector 71, Arts, entertainment, & recreation	17	13.8	4.9	105	-0.9	5.9	62	12.8	5.6	15,684	-1.7	3.2
Sector 72, Accommodation & food services	81	9.5	1.8	1,187	1.1	1.3	661	1.2	1.1	14,167	5.5	4.2
Other Services	99	-9.4	-0.5	329	-5.1	3.5	198	-4.2	4.4	19,894	5.3	5.4
Sector 81, Other services, except public admin.	99	-9.4	-0.5	329	-5.1	3.5	198	-4.2	4.4	19,894	5.3	5.4
Government Ownership	119	0.4	1.6	2,027	6.2	3.0	1,320	7.8	3.5	28,681	-1.2	2.6
Federal Government /1	44	1.1	3.5	143	-1.0	1.4	-	-	-	37,793	-0.5	2.2
491 Postal service	32	1.6	1.3	92	-2.3	0.1	-	-	-	37,660	-0.1	1.9
Other Federal Government	12	0.0	11.4	51	1.5	4.0	-	-	-	38,032	-1.2	2.6
State Government	12	0.0	3.7	188	2.8	4.6	71	-4.4	-0.5	35,762	2.2	3.9
Sector 61, Educational Services	2	0.0	0.0	43	10.6	-0.9	17	-1.5	-5.3	17,793	-3.0	11.7
Other State Government	10	0.0	4.6	145	0.7	6.7	54	-5.2	1.3	41,066	4.1	1.7
Local Government	63	0.0	0.0	1,696	7.3	3.0	1,249	8.6	3.8	27,129	-1.4	2.5
Sector 61, Educational Services	27	0.0	0.0	1,416	8.8	3.2	1,161	9.7	4.0	27,926	-2.8	2.2
Other Local Government	36	0.0	0.0	280	0.2	1.9	88	-3.6	1.2	23,094	5.4	3.8

See footnotes at end of table.

Table 3

Vermont County and Industry Sectors, 2003, total covered

annual average with percent change from 2002 and 1998, units, employment, women, average wage

NAICS Major Industry Group	Reporting			Employment						Average		
	2003	Units		Total			Women			Wage		
		Pct change		Pct change			Pct change			Pct change		
		From	Avg/2	2,003	From	Avg/2	2,003	From	Avg/2	2,003	From	Avg/2
	2002	98-03		2002	98-03		2002	98-03		2002	98-03	
	%	%		%	%		%	%		%	%	
03. Bennington - Total Covered	1,566	-1.2	-0.3	17,977	-2.2	-0.1	9,492	-1.0	0.2	28,704	2.8	3.7
Private Ownership	1,477	-1.4	-0.3	15,779	-2.4	-0.4	8,163	-1.1	-0.4	28,025	2.1	3.5
Goods Producing - Private	253	-1.8	-0.4	3,478	-7.1	-3.7	1,103	-8.6	-3.6	35,551	1.1	2.4
Natural Resources and Mining	10	-18.8	-4.1	102	5.4	1.6	29	15.2	1.9	19,270	-5.2	4.6
Sector 11, Agriculture, forestry, fishing & hunting	n	n	n	n	n	n	n	n	n	n	n	n
Sector 21, Mining	-	n	n	-	n	n	-	n	n	-	n	n
Construction	152	1.3	0.6	685	5.6	2.1	81	0.0	3.9	31,194	4.0	4.2
Sector 23, Construction	152	1.3	0.6	685	5.6	2.1	81	0.0	3.9	31,194	4.0	4.2
Manufacturing	91	-4.5	-1.7	2,692	-10.3	-5.1	994	-9.8	-4.2	37,276	1.4	2.4
Durable Goods	58	-8.4	-1.2	1,943	-7.3	-2.5	628	-12.3	-3.7	38,797	3.3	2.9
Non-Durable Goods	34	3.1	-2.5	749	-17.3	-10.2	366	-5.1	-5.1	33,328	-4.5	0.6
Service Providing - Private	1,224	-1.3	-0.3	12,300	-0.9	0.6	7,060	0.1	0.2	25,897	3.1	4.6
Trade, Transportation, and Utilities	406	-0.7	-1.9	3,877	-0.6	0.7	1,918	1.2	0.3	23,710	2.0	4.3
Sector 42, Wholesale trade	46	-1.1	-4.4	283	-17.9	-3.2	70	2.6	-5.0	37,546	-1.9	6.0
Sector 44-45, Retail trade	332	-0.6	-1.3	3,372	1.7	1.6	1,797	1.5	0.7	22,097	3.5	4.6
Sector 48-49, Transportation & warehousing	n	n	n	n	n	n	n	n	n	n	n	n
Sector 22, Utilities	n	n	n	n	n	n	n	n	n	n	n	n
Information	34	-1.5	1.2	402	-14.1	-4.7	221	-11.2	-3.4	34,684	11.2	3.2
Sector 51, Information	34	-1.5	1.2	402	-14.1	-4.7	221	-11.2	-3.4	34,684	11.2	3.2
Financial Activities	110	0.5	2.1	627	-0.8	2.6	396	-4.8	1.7	41,344	-0.5	2.8
Sector 52, Finance and Insurance	51	4.6	0.7	406	7.5	2.3	284	6.1	0.9	47,441	3.6	3.7
Sector 53, Real estate & rental & leasing	59	-2.9	3.5	220	-13.1	3.2	112	-24.5	3.7	30,099	-14.6	0.7
Professional and Business Services	210	-2.0	1.9	869	-7.8	-5.6	363	-16.0	-8.6	29,116	-2.6	7.1
Sector 54, Professional, scientific, & technical svcs.	137	-3.4	2.6	415	-9.0	2.7	236	-4.3	1.8	37,509	-0.2	4.2
Sector 55, Mgt. of companies & enterprises	4	6.3	0.0	14	3.0	2.6	3	18.2	5.4	34,009	10.1	0.4
Sector 56, Administrative & waste services	69	0.4	0.5	440	-6.9	-10.8	124	-32.3	-18.7	21,052	-6.3	5.7
Education & Health Services	142	-0.7	1.7	3,613	3.3	4.1	2,568	4.5	3.0	31,348	4.6	4.2
Sector 61, Educational services	18	-7.8	5.2	750	4.9	3.9	431	2.0	3.1	29,774	1.6	3.7
Sector 62, Health care & social assistance	124	0.4	1.3	2,863	2.9	4.2	2,137	5.0	3.0	31,761	5.4	4.3
Leisure and Hospitality	187	-2.9	-0.6	2,377	-2.3	-0.5	1,298	-1.6	-1.1	16,227	5.3	4.2
Sector 71, Arts, entertainment, & recreation	35	6.2	1.0	427	-3.1	1.4	183	-2.4	1.6	22,529	5.4	3.7
Sector 72, Accommodation & food services	153	-4.7	-0.9	1,949	-2.1	-0.8	1,115	-1.4	-1.5	14,845	5.4	4.2
Other Services	136	-2.0	-1.8	537	-1.9	-1.6	297	4.9	-1.5	18,018	-0.1	3.2
Sector 81, Other services, except public admin.	136	-2.0	-1.8	537	-1.9	-1.6	297	4.9	-1.5	18,018	-0.1	3.2
Government Ownership	90	1.7	-0.5	2,199	-0.6	2.8	1,330	-0.1	3.9	33,573	6.8	4.4
Federal Government /1	26	6.3	1.9	131	-0.5	-0.1	-	-	-	36,893	-0.7	0.8
491 Postal service	22	4.9	1.5	100	-1.6	-0.5	-	-	-	37,842	0.0	1.5
Other Federal Government	4	14.3	4.2	31	3.4	1.4	-	-	-	33,801	-2.8	-1.7
State Government	17	0.0	-4.1	637	1.1	8.9	371	0.7	15.6	39,757	3.7	4.5
Sector 61, Educational Services	2	0.0	0.0	29	10.4	-3.3	29	14.0	0.0	17,911	-3.2	15.4
Other State Government	15	0.0	-4.6	608	0.7	9.8	343	-0.2	17.8	40,806	4.1	3.7
Local Government	47	0.0	-0.2	1,431	-1.4	0.9	958	-0.4	0.9	30,520	9.3	4.3
Sector 61, Educational Services	16	0.0	-0.6	1,082	-0.6	1.1	855	1.2	1.3	31,572	9.3	4.1
Other Local Government	31	0.0	0.0	349	-3.7	0.3	103	-11.9	-2.3	27,264	8.7	4.7

See footnotes at end of table.

Table 3

Vermont County and Industry Sectors, 2003, total covered

annual average with percent change from 2002 and 1998, units, employment, women, average wage

NAICS Major Industry Group	Reporting			Employment						Average		
	2003	Units		Total			Women			Wage		
		Pct change		Pct change			Pct change			Pct change		
		From	Avg/2	2,003	From	Avg/2	2,003	From	Avg/2	2,003	From	Avg/2
	2002	98-03		2002	98-03		2002	98-03		2002	98-03	
	%	%		%	%		%	%		%	%	
05. Caledonia - Total Covered	1,021	0.9	0.1	11,367	0.9	1.0	5,730	0.3	1.5	26,272	2.9	3.6
Private Ownership	917	0.9	-0.1	9,448	1.0	1.0	4,595	-0.2	1.7	25,878	2.7	3.6
Goods Producing - Private	230	-0.9	1.3	2,546	-0.9	-1.5	559	-4.5	-2.8	30,828	0.4	2.8
Natural Resources and Mining	21	-11.6	-3.8	145	12.5	-8.4	41	13.8	-21.0	20,749	-8.5	-1.9
Sector 11, Agriculture, forestry, fishing & hunting	16	-14.7	-4.8	134	15.4	-9.2	40	13.5	-21.4	19,684	-8.0	-2.5
Sector 21, Mining	5	0.0	0.0	12	-12.5	4.0	1	25.0	0.0	32,959	-2.9	-1.5
Construction	149	2.4	3.3	729	5.3	5.7	94	12.2	7.5	30,606	-2.0	4.6
Sector 23, Construction	149	2.4	3.3	729	5.3	5.7	94	12.2	7.5	30,606	-2.0	4.6
Manufacturing	59	-4.4	-1.1	1,672	-4.3	-3.2	423	-9.0	-1.0	31,802	2.2	2.6
Durable Goods	41	-4.1	-0.2	1,197	3.6	-0.9	239	0.8	2.3	32,236	3.8	2.8
Non-Durable Goods	19	-5.1	-3.0	475	-19.8	-7.8	184	-19.2	-4.4	30,707	-1.5	1.9
Service Providing - Private	688	1.5	-0.6	6,902	1.8	2.1	4,036	0.4	2.4	24,052	4.1	4.4
Trade, Transportation, and Utilities	243	-0.1	-2.6	2,287	1.2	0.1	1,018	0.2	0.6	23,120	3.4	3.8
Sector 42, Wholesale trade	42	11.3	0.0	291	9.1	7.5	69	8.2	6.1	33,823	0.9	-0.5
Sector 44-45, Retail trade	165	-1.6	-2.9	1,618	-0.8	-1.3	838	0.5	-0.1	20,043	3.9	4.5
Sector 48-49, Transportation & warehousing	33	-5.1	-4.3	333	4.7	1.6	108	-6.1	3.4	24,091	0.0	1.5
Sector 22, Utilities	4	0.0	0.0	45	0.6	0.4	3	0.0	0.0	57,140	4.2	3.9
Information	24	7.9	7.5	272	0.1	1.2	138	-2.7	1.8	29,204	3.2	4.8
Sector 51, Information	24	7.9	7.5	272	0.1	1.2	138	-2.7	1.8	29,204	3.2	4.8
Financial Activities	64	-0.4	0.1	412	0.6	-0.1	307	-3.5	1.3	30,281	9.7	4.8
Sector 52, Finance and Insurance	47	3.3	1.5	348	1.7	0.4	271	-3.4	1.5	31,837	9.3	4.2
Sector 53, Real estate & rental & leasing	18	-9.1	-3.1	64	-5.1	-2.3	36	-4.0	-0.4	21,833	9.9	8.5
Professional and Business Services	101	2.0	-0.3	452	4.1	4.1	233	2.8	1.4	32,727	0.4	2.6
Sector 54, Professional, scientific, & technical svcs.	69	0.0	-0.8	296	2.5	3.2	174	1.5	3.4	38,731	0.6	2.1
Sector 55, Mgt. of companies & enterprises	n	n	n	n	n	n	n	n	n	n	n	n
Sector 56, Administrative & waste services	n	n	n	n	n	n	n	n	n	n	n	n
Education & Health Services	95	6.7	2.2	2,106	3.5	5.2	1,543	0.6	4.6	28,113	4.3	4.6
Sector 61, Educational services	13	16.3	6.2	463	7.2	3.4	255	13.6	5.7	31,034	0.9	2.7
Sector 62, Health care & social assistance	83	5.4	1.7	1,643	2.5	5.7	1,288	-1.6	4.4	27,290	5.2	5.5
Leisure and Hospitality	76	1.7	0.5	1,000	-1.4	1.7	594	0.8	1.4	11,930	4.1	4.6
Sector 71, Arts, entertainment, & recreation	8	0.0	-2.3	71	-2.5	-0.7	28	-0.9	-0.7	17,216	3.7	6.5
Sector 72, Accommodation & food services	68	1.9	0.9	930	-1.3	1.8	567	0.8	1.5	11,528	4.3	4.4
Other Services	86	-0.3	-0.8	375	4.1	1.4	204	4.6	2.4	18,249	-0.6	5.3
Sector 81, Other services, except public admin.	86	-0.3	-0.8	375	4.1	1.4	204	4.6	2.4	18,249	-0.6	5.3
Government Ownership	104	1.0	1.9	1,918	0.4	1.1	1,136	2.4	0.9	28,213	3.7	3.4
Federal Government /1	36	2.9	2.6	114	4.4	0.8	-	-	-	33,203	-2.7	1.5
491 Postal service	27	0.0	1.3	92	2.6	-0.6	-	-	-	32,154	-5.0	1.4
Other Federal Government	9	13.3	7.2	22	12.9	8.4	-	-	-	37,648	6.4	0.4
State Government	16	0.0	-1.2	599	3.6	2.5	270	14.4	2.1	35,986	2.0	2.8
Sector 61, Educational Services	3	0.0	0.0	283	6.4	1.9	157	27.9	3.4	29,909	0.5	1.3
Other State Government	13	0.0	-1.5	316	1.2	3.1	113	-0.2	0.4	41,434	3.6	3.8
Local Government	52	0.0	2.5	1,205	-1.4	0.4	866	-0.9	0.5	23,880	4.9	3.7
Sector 61, Educational Services	16	0.0	1.3	834	-2.8	0.0	709	-1.7	0.4	23,822	4.8	3.2
Other Local Government	36	0.0	3.0	371	1.8	1.3	156	3.1	1.0	24,011	5.2	4.8

See footnotes at end of table.

Table 3

Vermont County and Industry Sectors, 2003, total covered

annual average with percent change from 2002 and 1988, units, employment, women, average wage

NAICS Major Industry Group	Reporting			Employment						Average		
	2003	Units		Total			Women			Wage		
		Pct change		Pct change			Pct change			Pct change		
		From	Avg/2	2,003	From	Avg/2	2,003	From	Avg/2	2,003	From	Avg/2
	2002	98-03		2002	98-03		2002	98-03		2002	98-03	
	%	%		%	%		%	%		%	%	
07. Chittenden - Total Covered	5,633	0.9	0.6	93,533	-0.6	1.2	43,698	0.9	1.8	37,432	2.9	3.5
Private Ownership	5,405	0.9	0.6	79,446	-1.2	0.8	36,427	0.7	1.3	37,114	2.6	3.6
Goods Producing - Private	868	2.0	0.6	18,186	-7.2	-2.2	4,222	-6.7	-1.1	52,406	1.6	3.8
Natural Resources and Mining	24	-3.0	1.1	185	-12.6	-3.0	75	-16.9	-4.7	25,821	10.7	5.8
Sector 11, Agriculture, forestry, fishing & hunting	20	-3.6	1.3	146	-13.5	-4.1	72	-17.0	-4.9	20,064	10.4	5.6
Sector 21, Mining	4	0.0	0.0	39	-8.8	1.5	3	-14.3	0.0	47,576	8.6	3.1
Construction	611	2.4	1.6	4,869	3.2	0.1	527	-1.4	1.3	38,994	1.3	3.8
Sector 23, Construction	611	2.4	1.6	4,869	3.2	0.1	527	-1.4	1.3	38,994	1.3	3.8
Manufacturing	233	1.6	-1.7	13,132	-10.4	-2.9	3,620	-7.2	-1.4	57,754	2.7	4.1
Durable Goods	161	2.6	0.3	11,107	-11.5	-3.2	2,926	-9.0	-1.6	61,927	3.0	4.3
Non-Durable Goods	73	-0.3	-5.6	2,025	-3.7	-1.0	695	1.1	-0.2	34,861	5.7	3.3
Service Providing - Private	4,537	0.7	0.5	61,260	0.6	1.7	32,205	1.7	1.7	32,574	4.3	4.0
Trade, Transportation, and Utilities	1,321	-1.8	-0.6	18,736	1.0	1.4	7,553	0.5	0.7	29,216	4.2	3.5
Sector 42, Wholesale trade	348	-1.9	1.2	3,408	7.3	1.0	774	3.1	-2.8	47,199	2.9	4.7
Sector 44-45, Retail trade	846	-1.8	-1.3	12,571	-0.8	2.0	6,008	-0.4	1.3	22,790	3.4	3.7
Sector 48-49, Transportation & warehousing	121	-2.6	-0.2	2,494	1.6	0.1	700	6.1	0.8	33,204	1.8	3.0
Sector 22, Utilities	5	23.5	-5.6	263	3.3	-6.9	71	-2.4	-10.4	65,582	9.0	4.4
Information	145	1.2	1.5	2,472	-2.3	-3.0	1,120	-1.6	-5.8	44,666	3.1	5.1
Sector 51, Information	145	1.2	1.5	2,472	-2.3	-3.0	1,120	-1.6	-5.8	44,666	3.1	5.1
Financial Activities	487	2.5	-0.1	4,891	0.1	0.3	2,924	3.2	0.6	51,908	8.7	6.3
Sector 52, Finance and Insurance	286	1.6	-0.1	3,728	-0.6	1.0	2,462	2.8	1.2	58,940	9.7	6.1
Sector 53, Real estate & rental & leasing	201	3.8	-0.1	1,164	2.2	-1.6	463	5.4	-2.0	29,383	4.4	5.1
Professional and Business Services	1,023	1.3	2.4	9,167	1.6	2.4	3,883	0.6	1.0	41,886	4.6	4.3
Sector 54, Professional, scientific, & technical svcs.	736	0.2	2.1	5,852	-2.1	3.1	2,710	-1.3	2.8	52,720	8.0	3.9
Sector 55, Mgt. of companies & enterprises	n	n	n	n	n	n	n	n	n	n	n	n
Sector 56, Administrative & waste services	n	n	n	n	n	n	n	n	n	n	n	n
Education & Health Services	566	4.8	1.6	14,525	1.6	3.4	10,888	2.4	3.6	34,226	2.5	3.8
Sector 61, Educational services	77	9.6	1.7	2,200	-2.7	0.4	1,324	0.6	0.5	27,154	6.8	2.9
Sector 62, Health care & social assistance	489	4.0	1.6	12,325	2.4	4.0	9,564	2.7	4.0	35,488	1.8	3.8
Leisure and Hospitality	485	2.1	1.1	8,419	-1.5	1.8	4,212	0.9	2.5	14,731	3.3	2.7
Sector 71, Arts, entertainment, & recreation	102	-1.5	1.7	1,568	-3.1	4.6	828	0.9	7.2	14,792	3.8	-2.6
Sector 72, Accommodation & food services	383	3.1	1.0	6,851	-1.2	1.2	3,384	0.8	1.6	14,717	3.2	4.0
Other Services	511	-1.7	-1.1	3,050	0.9	1.0	1,626	8.4	2.2	25,793	1.8	3.0
Sector 81, Other services, except public admin.	511	-1.7	-1.1	3,050	0.9	1.0	1,626	8.4	2.2	25,793	1.8	3.0
Government Ownership	228	2.1	2.1	14,087	3.3	3.9	7,271	1.8	4.2	39,225	4.7	3.0
Federal Government /1	83	8.1	4.1	2,096	10.5	4.4	-	-	-	49,413	3.2	2.7
491 Postal service	31	1.6	1.3	493	-5.2	-1.7	-	-	-	45,562	5.3	3.3
Other Federal Government	52	12.4	6.1	1,603	16.4	6.9	-	-	-	50,597	2.0	2.2
State Government	30	0.0	2.1	5,517	2.3	4.7	3,106	3.0	6.3	41,730	4.9	2.7
Sector 61, Educational Services	2	0.0	0.0	3,900	2.4	4.4	2,212	3.8	5.6	41,814	5.7	1.8
Other State Government	28	0.0	2.3	1,618	2.2	5.3	895	1.0	8.2	41,526	3.1	5.3
Local Government	115	-1.3	0.7	6,473	2.1	3.0	4,165	1.0	2.7	33,790	4.2	3.1
Sector 61, Educational Services	23	0.0	0.0	4,323	1.5	3.4	3,347	0.7	2.9	34,010	3.8	2.5
Other Local Government	92	-1.6	0.9	2,150	3.3	2.4	818	2.3	2.1	33,348	5.1	4.3

See footnotes at end of table.

Table 3

Vermont County and Industry Sectors, 2003, total covered

annual average with percent change from 2002 and 1988, units, employment, women, average wage

NAICS Major Industry Group	Reporting			Employment						Average		
	2003	Units		Total			Women			Wage		
		Pct change		Pct change			Pct change			Pct change		
		From	Avg/2	2,003	From	Avg/2	2,003	From	Avg/2	2,003	From	Avg/2
	2002	98-03		2002	98-03		2002	98-03		2002	98-03	
	%	%		%	%		%	%		%	%	
09. Essex - Total Covered	172	-1.7	-0.1	1,419	-7.2	-3.6	607	-5.0	-1.8	25,500	-1.8	0.5
Private Ownership	131	-2.8	0.0	1,052	-9.7	-4.8	394	-4.4	-2.5	24,309	-5.3	-1.0
Goods Producing - Private	53	-2.3	0.8	675	-14.8	-7.8	178	-6.9	-5.8	27,641	-8.2	-1.3
Natural Resources and Mining	n	n	n	n	n	n	n	n	n	n	n	n
Sector 11, Agriculture, forestry, fishing & hunting	n	n	n	n	n	n	n	n	n	n	n	n
Sector 21, Mining	-	-	-	-	-	-	-	-	-	-	-	-
Construction	22	4.8	4.1	60	1.3	1.0	10	-2.6	7.1	23,822	-15.6	0.7
Sector 23, Construction	22	4.8	4.1	60	1.3	1.0	10	-2.6	7.1	23,822	-15.6	0.7
Manufacturing	n	n	n	n	n	n	n	n	n	n	n	n
Durable Goods	n	n	n	n	n	n	n	n	n	n	n	n
Non-Durable Goods	n	n	n	n	n	n	n	n	n	n	n	n
Service Providing - Private	79	-3.1	-0.6	377	1.0	2.5	216	-2.3	0.8	18,340	12.6	6.4
Trade, Transportation, and Utilities	30	4.3	-1.6	139	13.8	5.2	54	-1.8	0.8	19,729	24.2	7.4
Sector 42, Wholesale trade	n	n	n	n	n	n	n	n	n	n	n	n
Sector 44-45, Retail trade	16	0.0	1.6	81	1.7	5.3	42	-2.3	1.1	12,289	3.5	3.5
Sector 48-49, Transportation & warehousing	n	n	n	n	n	n	n	n	n	n	n	n
Sector 22, Utilities	n	-	-	n	-	-	n	-	-	n	-	-
Information	n	n	n	n	n	n	n	n	n	n	n	n
Sector 51, Information	n	n	n	n	n	n	n	n	n	n	n	n
Financial Activities	n	n	n	n	n	n	n	n	n	n	n	n
Sector 52, Finance and Insurance	n	n	n	n	n	n	n	n	n	n	n	n
Sector 53, Real estate & rental & leasing	-	n	n	-	n	n	-	n	n	-	n	n
Professional and Business Services	8	-30.4	2.7	27	-44.8	-6.9	12	-39.7	-0.4	30,420	51.3	14.5
Sector 54, Professional, scientific, & technical svcs.	n	n	n	n	n	n	n	n	n	n	n	n
Sector 55, Mgt. of companies & enterprises	-	-	-	-	-	-	-	-	-	-	-	-
Sector 56, Administrative & waste services	n	n	n	n	n	n	n	n	n	n	n	n
Education & Health Services	8	-3.0	0.0	67	-2.4	8.2	50	-14.6	4.3	26,902	9.5	3.4
Sector 61, Educational services	-	-	-	-	-	-	-	-	-	-	-	-
Sector 62, Health care & social assistance	8	-3.0	0.0	67	-2.4	8.2	50	-14.6	4.3	26,902	9.5	3.4
Leisure and Hospitality	17	8.1	-0.3	106	6.8	0.2	70	13.0	-2.9	9,143	-2.9	3.9
Sector 71, Arts, entertainment, & recreation	n	n	n	n	n	n	n	n	n	n	n	n
Sector 72, Accommodation & food services	n	n	n	n	n	n	n	n	n	n	n	n
Other Services	11	-4.3	-0.9	24	12.2	1.7	17	21.4	7.7	12,128	1.4	-0.7
Sector 81, Other services, except public admin.	11	-4.3	-0.9	24	12.2	1.7	17	21.4	7.7	12,128	1.4	-0.7
Government Ownership	41	1.9	-0.5	366	0.9	0.5	214	-6.0	-0.4	28,922	7.5	5.3
Federal Government /1	17	6.3	1.2	82	18.4	3.2	-	-	-	51,974	-3.8	5.0
491 Postal service	11	0.0	0.0	26	1.3	-3.1	-	-	-	29,930	-0.3	7.1
Other Federal Government	6	20.0	3.7	56	28.5	7.3	-	-	-	62,134	-8.7	2.2
State Government	-	-100.0	-100.0	-	-100.0	-100.0	-	-100.0	-100.0	-	-100.0	-100.0
Sector 61, Educational Services	-	-100.0	-100.0	-	-100.0	-100.0	-	-100.0	-100.0	-	-100.0	-100.0
Other State Government	-	-	-100.0	-	-	-100.0	-	-	-100.0	-	-	-100.0
Local Government	24	0.0	0.9	284	-3.2	0.7	214	-5.9	0.3	22,229	8.5	5.3
Sector 61, Educational Services	9	0.0	0.0	192	-2.1	-0.1	162	-3.3	-0.1	24,691	7.7	5.7
Other Local Government	15	0.0	1.4	92	-5.4	2.7	52	-13.3	1.5	17,073	9.9	4.8

See footnotes at end of table.

Table 3

Vermont County and Industry Sectors, 2003, total covered

annual average with percent change from 2002 and 1988, units, employment, women, average wage

NAICS Major Industry Group	Reporting			Employment						Average		
	2003	Units		Total			Women			Wage		
		Pct change		Pct change			Pct change			Pct change		
		From	Avg/2	2,003	From	Avg/2	2,003	From	Avg/2	2,003	From	Avg/2
	2002	98-03		2002	98-03		2002	98-03		2002	98-03	
	%	%		%	%		%	%		%	%	
11. Franklin - Total Covered	1,186	-4.4	1.3	15,352	0.1	2.8	7,593	0.2	2.7	30,102	4.8	4.2
Private Ownership	1,074	-5.1	1.5	11,938	-1.4	2.4	5,926	-0.5	2.5	28,493	4.9	4.2
Goods Producing - Private	249	1.6	3.1	3,479	-2.8	-1.0	851	-4.0	-4.7	35,895	6.2	4.2
Natural Resources and Mining	38	0.0	10.8	280	-6.1	11.3	50	0.0	16.2	22,949	3.4	1.7
Sector 11, Agriculture, forestry, fishing & hunting	n	n	n	n	n	n	n	n	n	n	n	n
Sector 21, Mining	n	n	n	n	n	n	n	n	n	n	n	n
Construction	145	-0.3	3.6	515	2.4	4.0	59	13.4	4.1	27,731	1.8	3.7
Sector 23, Construction	145	-0.3	3.6	515	2.4	4.0	59	13.4	4.1	27,731	1.8	3.7
Manufacturing	66	7.3	-1.2	2,685	-3.3	-2.6	742	-5.4	-6.0	38,809	7.1	5.0
Durable Goods	31	6.8	-1.2	679	-4.1	-4.8	215	2.0	-7.1	34,255	4.2	4.2
Non-Durable Goods	35	7.7	-1.2	2,006	-3.1	-1.8	527	-8.2	-5.5	40,351	7.9	5.1
Service Providing - Private	825	-6.9	1.1	8,459	-0.9	4.0	5,075	0.1	4.1	25,448	4.4	4.9
Trade, Transportation, and Utilities	311	-3.4	-0.6	3,234	-4.9	1.7	1,351	-6.4	0.6	25,572	2.9	5.2
Sector 42, Wholesale trade	55	0.9	-0.5	574	-4.3	0.3	202	-7.9	0.8	31,603	3.8	4.7
Sector 44-45, Retail trade	209	-2.5	-0.5	2,128	-4.4	1.8	980	-5.4	-0.7	21,504	6.4	5.0
Sector 48-49, Transportation & warehousing	n	n	n	n	n	n	n	n	n	n	n	n
Sector 22, Utilities	n	n	n	n	n	n	n	n	n	n	n	n
Information	21	1.2	6.6	643	5.7	39.8	501	5.9	51.2	28,209	1.8	7.2
Sector 51, Information	21	1.2	6.6	643	5.7	39.8	501	5.9	51.2	28,209	1.8	7.2
Financial Activities	79	2.6	3.1	379	-0.4	-4.2	249	3.0	-6.1	32,944	0.9	3.3
Sector 52, Finance and Insurance	49	8.9	3.5	294	0.4	-6.1	208	4.7	-7.6	36,485	2.9	3.8
Sector 53, Real estate & rental & leasing	30	-6.3	2.5	85	-2.9	4.6	41	-4.6	4.4	20,769	-11.2	7.4
Professional and Business Services	106	6.0	3.3	555	6.4	11.9	236	5.7	10.2	30,386	2.2	1.0
Sector 54, Professional, scientific, & technical svcs.	72	6.3	3.0	285	2.4	7.3	178	3.6	9.9	40,914	6.0	2.4
Sector 55, Mgt. of companies & enterprises	-	n	n	-	n	n	-	n	n	-	n	n
Sector 56, Administrative & waste services	n	n	n	n	n	n	n	n	n	n	n	n
Education & Health Services	106	3.7	3.4	2,259	5.8	4.7	1,876	6.8	4.9	29,658	4.4	4.8
Sector 61, Educational services	n	n	n	n	n	n	n	n	n	n	n	n
Sector 62, Health care & social assistance	n	n	n	n	n	n	n	n	n	n	n	n
Leisure and Hospitality	98	2.6	0.3	1,040	2.1	2.2	711	4.3	2.3	11,078	1.7	4.4
Sector 71, Arts, entertainment, & recreation	10	-2.4	-2.8	79	-3.0	0.5	47	2.2	4.9	11,006	5.7	4.9
Sector 72, Accommodation & food services	88	3.2	0.7	961	2.5	2.3	664	4.4	2.1	11,084	1.3	4.4
Other Services	104	-38.3	0.4	348	-25.7	0.4	151	-39.6	-2.5	18,779	27.3	4.3
Sector 81, Other services, except public admin.	104	-38.3	0.4	348	-25.7	0.4	151	-39.6	-2.5	18,779	27.3	4.3
Government Ownership	112	2.0	-0.3	3,414	5.8	4.4	1,667	2.6	3.4	35,730	3.5	4.0
Federal Government /1	47	5.0	1.0	1,046	13.9	9.1	-	-	-	49,489	-1.4	3.1
491 Postal service	24	1.0	1.1	102	0.2	-0.5	-	-	-	37,138	-2.3	2.8
Other Federal Government	23	9.5	0.9	944	15.5	10.5	-	-	-	50,818	-1.7	2.8
State Government	13	0.0	-2.8	393	2.0	-1.2	147	-1.7	-4.0	38,906	2.8	6.0
Sector 61, Educational Services	2	0.0	0.0	55	9.3	-1.7	28	-2.6	-5.3	20,446	-3.3	13.2
Other State Government	11	0.0	-3.3	338	0.9	-1.1	119	-1.5	-3.6	41,910	3.9	5.5
Local Government	52	0.0	-0.8	1,975	2.6	3.5	1,520	3.0	4.4	27,813	5.4	2.9
Sector 61, Educational Services	19	0.0	0.0	1,613	3.0	3.7	1,394	3.4	4.5	28,319	4.7	2.8
Other Local Government	33	0.0	-1.2	362	1.0	2.5	125	-0.6	3.2	25,559	8.6	3.3

See footnotes at end of table.

Table 3

Vermont County and Industry Sectors, 2003, total covered

annual average with percent change from 2002 and 1998, units, employment, women, average wage

NAICS Major Industry Group	Reporting			Employment						Average		
	2003	Units		Total			Women			Wage		
		Pct change		Pct change			Pct change			Pct change		
		From	Avg/2	2,003	From	Avg/2	2,003	From	Avg/2	2,003	From	Avg/2
	2002	98-03		2002	98-03		2002	98-03		2002	98-03	
	%	%		%	%		%	%		%	%	
13. Grand Isle - Total Covered	198	1.8	0.6	1,051	3.4	3.5	531	2.5	1.7	22,396	4.1	3.9
Private Ownership	167	1.8	0.1	755	4.5	3.3	345	5.4	2.5	20,201	5.2	3.8
Goods Producing - Private	53	11.1	1.7	194	9.8	8.0	44	4.8	8.8	27,548	3.6	4.1
Natural Resources and Mining	6	-4.0	7.1	34	7.7	16.6	12	23.7	15.4	18,759	2.9	8.6
Sector 11, Agriculture, forestry, fishing & hunting	n	n	n	n	n	n	n	n	n	n	n	n
Sector 21, Mining	n	n	n	n	n	n	n	n	n	n	n	n
Construction	41	12.5	2.5	130	16.2	10.0	15	13.0	6.3	30,737	0.2	5.8
Sector 23, Construction	41	12.5	2.5	130	16.2	10.0	15	13.0	6.3	30,737	0.2	5.8
Manufacturing	6	20.0	-6.2	31	-9.4	-3.2	17	-10.7	7.3	23,740	14.0	-1.4
Durable Goods	n	n	n	n	n	n	n	n	n	n	n	n
Non-Durable Goods	n	n	n	n	n	n	n	n	n	n	n	n
Service Providing - Private	114	-1.9	-0.6	561	2.8	2.0	301	5.5	1.7	17,659	5.1	3.0
Trade, Transportation, and Utilities	34	-5.6	-3.6	226	7.3	1.5	108	13.4	2.4	18,737	2.9	2.8
Sector 42, Wholesale trade	n	n	n	n	n	n	n	n	n	n	n	n
Sector 44-45, Retail trade	28	0.9	-0.5	173	6.7	1.8	94	13.0	2.0	15,449	0.6	4.2
Sector 48-49, Transportation & warehousing	n	n	n	n	n	n	n	n	n	n	n	n
Sector 22, Utilities	-	-	n	-	-	n	-	-	n	-	-	n
Information	n	n	n	n	n	n	n	n	n	n	n	n
Sector 51, Information	n	n	n	n	n	n	n	n	n	n	n	n
Financial Activities	n	n	n	n	n	n	n	n	n	n	n	n
Sector 52, Finance and Insurance	n	n	n	n	n	n	n	n	n	n	n	n
Sector 53, Real estate & rental & leasing	n	n	n	n	n	n	n	n	n	n	n	n
Professional and Business Services	23	20.0	6.7	53	5.3	-0.4	29	19.6	-0.5	23,507	7.9	4.2
Sector 54, Professional, scientific, & technical svcs.	17	22.2	11.1	22	7.7	1.7	13	17.8	1.6	38,447	7.3	-0.4
Sector 55, Mgt. of companies & enterprises	-	-	-	-	-	-	-	-	-	-	-	-
Sector 56, Administrative & waste services	6	14.3	-1.6	31	3.6	-1.8	16	21.2	-2.1	12,893	5.7	12.1
Education & Health Services	10	29.0	3.3	51	13.9	6.8	42	11.3	4.0	16,728	3.1	1.4
Sector 61, Educational services	n	n	n	n	n	n	n	n	n	n	n	n
Sector 62, Health care & social assistance	n	n	n	n	n	n	n	n	n	n	n	n
Leisure and Hospitality	26	6.1	-1.1	168	0.9	2.5	84	2.7	0.9	13,757	4.3	3.2
Sector 71, Arts, entertainment, & recreation	5	0.0	0.0	35	-2.8	26.1	12	4.3	24.6	15,865	18.3	-4.5
Sector 72, Accommodation & food services	21	7.6	-1.4	133	1.8	-0.6	72	2.5	-1.2	13,212	0.6	3.6
Other Services	10	-43.1	-6.0	28	-30.3	-5.2	14	-41.3	-4.2	19,568	20.3	5.6
Sector 81, Other services, except public admin.	10	-43.1	-6.0	28	-30.3	-5.2	14	-41.3	-4.2	19,568	20.3	5.6
Government Ownership	32	1.6	3.1	296	0.5	3.9	186	-2.6	0.4	27,988	3.1	3.9
Federal Government /1	13	4.2	4.6	25	-3.3	4.8	-	-	-	41,708	13.8	3.5
491 Postal service	10	0.0	2.1	20	-9.3	3.3	-	-	-	34,436	12.3	0.9
Other Federal Government	3	25.0	20.1	4	44.2	15.3	-	-	-	78,063	-7.3	7.4
State Government	3	0.0	8.4	36	0.0	24.9	3	0.0	-9.7	39,096	4.8	-2.3
Sector 61, Educational Services	-	-	-	-	-	-	-	-	-	-	-	-
Other State Government	3	0.0	8.4	36	0.0	24.9	3	0.0	-9.7	39,096	4.8	-2.3
Local Government	16	0.0	1.3	236	1.0	2.0	183	-2.7	0.6	24,867	1.3	3.5
Sector 61, Educational Services	6	0.0	0.0	175	1.1	1.4	157	-2.0	0.6	27,779	0.2	3.1
Other Local Government	10	0.0	2.1	61	0.8	3.9	26	-6.3	0.4	16,474	6.5	7.9

See footnotes at end of table.

Table 3

Vermont County and Industry Sectors, 2003, total covered

annual average with percent change from 2002 and 1998, units, employment, women, average wage

NAICS Major Industry Group	Reporting			Employment						Average		
	2003	Units		Total			Women			Wage		
		Pct change		Pct change			Pct change			Pct change		
		From	Avg/2	2,003	From	Avg/2	2,003	From	Avg/2	2,003	From	Avg/2
	2002	98-03		2002	98-03		2002	98-03		2002	98-03	
	%	%		%	%		%	%		%	%	
15. Lamoille - Total Covered	1,019	1.4	-0.2	10,562	-0.5	0.8	5,763	2.3	1.8	25,421	3.7	4.9
Private Ownership	949	1.5	-0.2	8,986	-1.3	0.7	4,779	1.2	1.6	24,619	3.6	5.2
Goods Producing - Private	229	4.6	1.3	1,488	-3.3	-0.5	377	-1.6	-2.4	30,183	3.6	4.4
Natural Resources and Mining	16	12.7	4.4	63	9.9	5.1	20	32.2	14.9	17,818	2.9	-1.8
Sector 11, Agriculture, forestry, fishing & hunting	n	n	n	n	n	n	n	n	n	n	n	n
Sector 21, Mining	n	n	n	n	n	n	n	n	n	n	n	n
Construction	163	6.5	2.4	781	0.0	2.6	89	5.3	5.1	29,469	3.8	4.4
Sector 23, Construction	163	6.5	2.4	781	0.0	2.6	89	5.3	5.1	29,469	3.8	4.4
Manufacturing	51	-3.3	-2.6	644	-8.0	-4.0	268	-5.5	-5.0	32,257	4.3	5.2
Durable Goods	34	2.3	-2.6	444	-7.3	-1.8	126	0.0	0.2	36,365	6.5	4.5
Non-Durable Goods	17	-13.0	-2.5	200	-9.5	-7.9	142	-9.8	-8.5	23,115	-3.6	4.8
Service Providing - Private	720	0.6	-0.6	7,497	-0.8	0.9	4,402	1.4	2.0	23,515	3.8	5.4
Trade, Transportation, and Utilities	222	2.8	-1.4	1,748	-1.6	0.5	823	-2.6	0.0	24,078	4.9	4.9
Sector 42, Wholesale trade	n	n	n	n	n	n	n	n	n	n	n	n
Sector 44-45, Retail trade	163	0.3	-1.9	1,492	-3.5	0.1	760	-3.3	0.0	22,059	5.2	4.7
Sector 48-49, Transportation & warehousing	24	6.7	1.3	119	13.4	7.8	18	5.9	5.5	17,911	5.3	3.1
Sector 22, Utilities	n	n	n	n	n	n	n	n	n	n	n	n
Information	15	-3.3	-3.1	100	13.4	1.9	54	2.4	3.8	29,125	4.4	6.7
Sector 51, Information	15	-3.3	-3.1	100	13.4	1.9	54	2.4	3.8	29,125	4.4	6.7
Financial Activities	53	4.5	0.9	304	5.2	3.4	206	4.3	1.9	29,916	1.2	3.9
Sector 52, Finance and Insurance	24	-5.1	0.0	209	3.8	3.3	155	1.3	0.6	33,573	2.3	4.4
Sector 53, Real estate & rental & leasing	29	13.6	1.6	96	8.5	3.5	51	14.7	6.8	21,959	-0.9	2.7
Professional and Business Services	138	-1.4	-0.1	498	-7.1	-3.1	217	-7.8	-2.4	34,472	13.0	10.2
Sector 54, Professional, scientific, & technical svcs.	93	-3.1	-1.8	271	-1.2	2.0	150	6.6	2.0	38,508	5.7	7.3
Sector 55, Mgt. of companies & enterprises	-	-	-	-	-	-	-	-	-	-	-	-
Sector 56, Administrative & waste services	45	2.3	4.2	227	-13.2	-7.6	66	-29.3	-9.4	29,659	22.1	11.8
Education & Health Services	84	1.5	0.5	1,486	-0.7	3.3	1,154	1.7	3.2	28,584	4.0	5.5
Sector 61, Educational services	18	4.4	6.0	179	-3.4	6.8	102	2.0	6.9	19,131	9.2	6.2
Sector 62, Health care & social assistance	66	0.8	-0.7	1,308	-0.4	2.9	1,052	1.6	2.9	29,875	3.4	5.6
Leisure and Hospitality	123	-1.8	-0.7	3,033	-0.3	0.7	1,760	4.0	2.9	18,188	1.1	4.4
Sector 71, Arts, entertainment, & recreation	18	-11.3	1.2	137	20.1	15.7	83	34.4	24.7	17,574	-19.9	-5.7
Sector 72, Accommodation & food services	105	0.0	-1.0	2,896	-1.1	0.2	1,677	2.8	2.3	18,217	2.2	4.7
Other Services	86	-0.9	-0.6	328	-1.0	-0.2	190	3.8	0.7	22,503	1.9	5.6
Sector 81, Other services, except public admin.	86	-0.9	-0.6	328	-1.0	-0.2	190	3.8	0.7	22,503	1.9	5.6
Government Ownership	70	0.0	-1.0	1,576	4.3	1.7	984	7.9	2.9	29,994	3.0	3.7
Federal Government /1	25	0.0	-2.6	79	-1.0	2.1	-	-	-	33,892	0.1	1.5
491 Postal service	20	0.0	0.0	66	-0.5	0.5	-	-	-	34,827	-2.7	1.8
Other Federal Government	5	0.0	-10.1	14	-3.5	12.4	-	-	-	29,424	17.8	0.9
State Government	11	0.0	0.0	381	1.1	-0.8	232	12.0	1.8	33,205	3.6	4.1
Sector 61, Educational Services	3	0.0	0.0	279	1.2	-3.1	175	16.7	-0.6	30,498	3.4	4.1
Other State Government	8	0.0	0.0	102	0.7	7.7	57	-0.4	11.7	40,639	4.1	1.3
Local Government	34	0.0	0.0	1,116	5.8	2.6	753	6.7	3.3	28,621	3.3	3.9
Sector 61, Educational Services	13	0.0	0.0	823	7.5	2.4	652	8.0	3.6	27,903	1.9	3.1
Other Local Government	21	0.0	0.0	293	1.3	3.2	101	-0.5	1.7	30,634	7.3	6.2

See footnotes at end of table.

Table 3

Vermont County and Industry Sectors, 2003, total covered

annual average with percent change from 2002 and 1988, units, employment, women, average wage

NAICS Major Industry Group	Reporting			Employment						Average		
	2003	Units		Total			Women			Wage		
		Pct change		Pct change			Pct change			Pct change		
		From	Avg/2	2,003	From	Avg/2	2,003	From	Avg/2	2,003	From	Avg/2
	2002	98-03		2002	98-03		2002	98-03		2002	98-03	
	%	%		%	%		%	%		%	%	
17. Orange - Total Covered	856	0.9	1.9	7,982	-1.4	1.1	4,104	-1.4	1.4	26,479	3.7	3.9
Private Ownership	765	0.8	2.1	6,047	-1.6	0.7	2,892	-1.7	0.9	26,016	3.5	4.1
Goods Producing - Private	220	3.8	3.9	1,568	-9.2	-2.4	335	-14.9	-3.5	28,628	3.4	3.6
Natural Resources and Mining	29	2.6	3.8	133	6.8	1.0	34	7.0	-0.9	24,836	3.4	4.3
Sector 11, Agriculture, forestry, fishing & hunting	n	n	n	n	n	n	n	n	n	n	n	n
Sector 21, Mining	n	n	n	n	n	n	n	n	n	n	n	n
Construction	139	4.9	5.3	557	1.1	2.0	64	3.7	4.8	29,099	3.1	3.9
Sector 23, Construction	139	4.9	5.3	557	1.1	2.0	64	3.7	4.8	29,099	3.1	3.9
Manufacturing	52	1.5	0.6	878	-16.4	-5.0	237	-21.0	-5.5	28,903	3.8	3.4
Durable Goods	31	-2.4	0.5	621	-20.1	-6.3	133	-27.2	-6.5	29,102	2.2	2.4
Non-Durable Goods	21	7.8	0.7	257	-6.0	-1.4	105	-11.4	-4.1	28,421	9.0	7.2
Service Providing - Private	546	-0.3	1.4	4,480	1.3	2.0	2,558	0.3	1.5	25,102	4.0	4.6
Trade, Transportation, and Utilities	165	2.2	1.8	1,427	2.3	2.9	627	3.0	3.5	25,729	2.6	4.6
Sector 42, Wholesale trade	40	4.6	8.1	316	-10.7	5.7	143	-9.9	6.5	32,849	4.9	6.7
Sector 44-45, Retail trade	103	3.0	0.2	966	5.7	2.7	459	7.1	2.7	21,897	3.4	3.5
Sector 48-49, Transportation & warehousing	n	n	n	n	n	n	n	n	n	n	n	n
Sector 22, Utilities	n	n	n	n	n	n	n	n	n	n	n	n
Information	21	-4.5	3.1	102	-2.9	5.4	67	-2.5	8.9	24,582	-4.8	5.3
Sector 51, Information	21	-4.5	3.1	102	-2.9	5.4	67	-2.5	8.9	24,582	-4.8	5.3
Financial Activities	45	-4.3	1.0	228	-4.6	-0.7	154	-3.6	-2.9	32,572	7.0	6.0
Sector 52, Finance and Insurance	30	-7.0	2.1	172	-7.4	-1.5	128	-6.6	-3.2	33,433	5.4	4.1
Sector 53, Real estate & rental & leasing	15	1.7	-1.0	56	5.4	1.9	26	14.1	-1.1	29,902	15.7	17.8
Professional and Business Services	113	3.7	3.3	419	4.8	4.8	224	1.7	6.8	29,446	3.8	3.2
Sector 54, Professional, scientific, & technical svcs.	79	4.3	3.5	260	6.3	3.6	135	1.9	4.8	35,575	2.8	4.0
Sector 55, Mgt. of companies & enterprises	-	-	n	-	-	n	-	-	n	-	-	n
Sector 56, Administrative & waste services	n	n	n	n	n	n	n	n	n	n	n	n
Education & Health Services	74	-4.2	1.2	1,225	1.8	0.6	911	-1.8	-0.7	28,157	3.4	3.6
Sector 61, Educational services	11	-15.4	0.9	140	1.2	1.8	93	1.1	1.3	30,964	6.0	5.2
Sector 62, Health care & social assistance	63	-1.9	1.2	1,085	1.8	0.4	819	-2.1	-0.9	27,795	3.1	3.4
Leisure and Hospitality	62	2.5	0.3	806	1.3	1.1	424	3.7	0.9	13,168	2.3	3.7
Sector 71, Arts, entertainment, & recreation	11	2.3	4.7	57	-0.7	0.8	30	-11.2	13.6	11,830	17.4	3.3
Sector 72, Accommodation & food services	51	2.5	-0.5	749	1.4	1.1	394	5.0	0.2	13,269	1.3	3.7
Other Services	66	-6.4	-1.2	272	-3.5	3.4	151	-3.8	6.5	30,666	17.3	11.1
Sector 81, Other services, except public admin.	66	-6.4	-1.2	272	-3.5	3.4	151	-3.8	6.5	30,666	17.3	11.1
Government Ownership	91	1.7	0.2	1,935	-0.5	2.5	1,212	-0.7	2.7	27,927	4.4	3.3
Federal Government /1	42	1.2	1.0	99	-0.6	0.3	-	-	-	30,093	2.9	1.6
491 Postal service	34	1.5	0.0	94	0.0	0.5	-	-	-	29,847	3.3	1.8
Other Federal Government	8	0.0	5.9	5	-10.1	-2.9	-	-	-	34,533	-1.0	-0.2
State Government	6	0.0	0.0	450	3.1	5.9	189	3.0	4.1	33,810	2.7	2.7
Sector 61, Educational Services	1	0.0	0.0	373	3.4	4.4	168	2.7	4.6	32,567	2.6	2.6
Other State Government	5	0.0	0.0	76	1.7	15.5	20	5.2	0.5	39,895	3.1	1.5
Local Government	43	2.4	-0.5	1,387	-1.7	1.7	1,023	-1.4	2.5	25,866	4.9	3.3
Sector 61, Educational Services	17	0.0	-2.2	1,081	-3.7	1.8	885	-2.5	2.6	27,824	6.2	3.2
Other Local Government	26	4.0	0.8	306	6.1	1.1	139	5.9	1.6	18,950	1.5	3.7

See footnotes at end of table.

Table 3

Vermont County and Industry Sectors, 2003, total covered

annual average with percent change from 2002 and 1998, units, employment, women, average wage

NAICS Major Industry Group	Reporting			Employment						Average		
	2003	Units		Total			Women			Wage		
		Pct change		Pct change			Pct change			Pct change		
		From	Avg/2	2,003	From	Avg/2	2,003	From	Avg/2	2,003	From	Avg/2
	2002	98-03		2002	98-03		2002	98-03		2002	98-03	
	%	%		%	%		%	%		%	%	
19. Orleans - Total Covered	926	2.7	1.4	9,578	1.3	2.2	5,032	-0.2	2.5	26,114	6.4	4.1
Private Ownership	821	2.8	1.5	7,682	0.9	1.9	3,972	-0.1	2.4	25,046	6.7	4.0
Goods Producing - Private	202	-0.5	1.2	2,323	-0.8	-0.3	676	2.7	1.5	30,809	13.1	4.6
Natural Resources and Mining	21	-2.3	-0.7	135	1.8	3.0	19	-22.9	3.9	21,964	7.4	3.0
Sector 11, Agriculture, forestry, fishing & hunting	n	n	n	n	n	n	n	n	n	n	n	n
Sector 21, Mining	n	n	-	n	n	-	n	n	-	n	n	-
Construction	133	1.7	2.6	563	-3.5	3.4	62	6.4	9.9	27,392	8.9	4.8
Sector 23, Construction	133	1.7	2.6	563	-3.5	3.4	62	6.4	9.9	27,392	8.9	4.8
Manufacturing	48	-5.4	-1.3	1,624	0.0	-1.6	595	3.4	0.7	32,731	14.6	4.9
Durable Goods	27	-6.0	-4.0	1,358	-0.5	-1.1	438	5.8	4.2	32,739	16.6	4.5
Non-Durable Goods	21	-4.7	3.2	266	2.5	-3.9	157	-2.8	-6.3	32,691	5.4	7.1
Service Providing - Private	619	3.9	1.5	5,359	1.7	2.9	3,296	-0.6	2.6	22,548	3.5	3.9
Trade, Transportation, and Utilities	237	0.9	0.2	1,736	-0.2	0.3	751	-5.5	-0.9	22,863	1.1	3.3
Sector 42, Wholesale trade	n	n	n	n	n	n	n	n	n	n	n	n
Sector 44-45, Retail trade	149	0.0	-0.4	1,229	2.1	1.1	606	-6.8	-1.1	19,817	3.1	4.3
Sector 48-49, Transportation & warehousing	n	n	n	n	n	n	n	n	n	n	n	n
Sector 22, Utilities	n	n	n	n	n	n	n	n	n	n	n	n
Information	15	0.0	5.0	99	-9.6	-1.2	51	-9.4	-3.0	31,268	17.8	7.7
Sector 51, Information	15	0.0	5.0	99	-9.6	-1.2	51	-9.4	-3.0	31,268	17.8	7.7
Financial Activities	51	5.7	3.0	274	6.0	2.5	206	7.3	1.9	29,827	8.2	6.6
Sector 52, Finance and Insurance	35	0.0	3.3	233	3.1	1.0	182	4.4	0.8	30,943	9.9	6.6
Sector 53, Real estate & rental & leasing	16	21.2	2.4	41	26.5	15.0	24	35.7	13.2	23,409	0.2	12.1
Professional and Business Services	83	8.9	3.3	288	11.3	8.1	165	6.1	9.6	23,424	1.8	0.3
Sector 54, Professional, scientific, & technical svcs.	54	6.9	1.1	162	11.0	4.1	103	8.4	5.1	27,594	1.6	0.9
Sector 55, Mgt. of companies & enterprises	-	-	-	-	-	-	-	-	-	-	-	-
Sector 56, Administrative & waste services	29	12.7	8.6	126	11.6	14.9	62	2.5	21.1	18,081	2.4	2.4
Education & Health Services	72	6.7	4.6	1,846	3.0	5.8	1,477	-0.1	5.2	25,341	2.8	3.6
Sector 61, Educational services	9	15.6	2.9	200	15.8	7.5	133	13.0	7.4	16,563	-6.6	2.7
Sector 62, Health care & social assistance	62	5.5	4.9	1,646	1.6	5.6	1,345	-1.3	5.0	26,407	4.0	3.7
Leisure and Hospitality	79	3.6	2.3	852	0.0	3.1	515	0.8	1.8	13,171	5.6	4.5
Sector 71, Arts, entertainment, & recreation	14	7.5	1.5	65	14.6	6.4	25	13.5	5.0	20,550	12.1	10.1
Sector 72, Accommodation & food services	65	2.8	2.5	788	-1.1	2.9	490	0.3	1.6	12,566	4.2	3.8
Other Services	83	5.7	-0.5	263	2.3	-0.7	132	2.5	-2.2	19,424	7.1	6.1
Sector 81, Other services, except public admin.	83	5.7	-0.5	263	2.3	-0.7	132	2.5	-2.2	19,424	7.1	6.1
Government Ownership	106	2.2	0.6	1,897	2.6	3.6	1,060	-0.7	2.7	30,439	5.2	4.5
Federal Government /1	40	6.0	2.7	235	14.6	3.8	-	-	-	48,300	4.0	4.0
491 Postal service	25	2.0	1.7	84	-2.9	-0.7	-	-	-	35,289	1.8	3.3
Other Federal Government	15	13.5	4.7	151	27.4	7.0	-	-	-	55,530	0.9	3.1
State Government	11	0.0	-3.3	332	1.7	7.9	134	0.0	5.2	39,665	3.2	7.0
Sector 61, Educational Services	2	0.0	0.0	39	10.5	-2.5	22	-6.3	-3.4	16,580	-2.7	14.9
Other State Government	9	0.0	-3.9	293	0.6	9.9	112	1.4	7.6	42,707	4.1	5.2
Local Government	55	0.0	0.0	1,330	1.0	2.6	926	-0.8	2.4	24,978	4.7	3.4
Sector 61, Educational Services	24	0.0	0.0	1,092	1.0	2.6	860	-0.8	2.6	26,417	4.9	3.6
Other Local Government	31	0.0	0.0	238	0.8	2.5	66	-1.1	-0.2	18,365	3.3	2.0

See footnotes at end of table.

Table 3

Vermont County and Industry Sectors, 2003, total covered

annual average with percent change from 2002 and 1998, units, employment, women, average wage

NAICS Major Industry Group	Reporting			Employment						Average		
	2003	Units		Total			Women			Wage		
		Pct change		Pct change			Pct change			Pct change		
		From	Avg/2	2,003	From	Avg/2	2,003	From	Avg/2	2,003	From	Avg/2
	2002	98-03		2002	98-03		2002	98-03		2002	98-03	
	%	%		%	%		%	%		%	%	
21. Rutland - Total Covered	2,448	-0.9	0.4	28,552	-1.3	-0.2	13,796	-1.1	0.4	30,074	4.7	4.0
Private Ownership	2,280	-1.0	0.4	24,190	-1.0	-0.1	11,382	-0.4	0.3	29,814	4.5	4.0
Goods Producing - Private	478	2.3	2.5	5,856	-2.3	-1.1	1,213	-5.2	-1.6	37,822	5.0	3.9
Natural Resources and Mining	50	2.6	5.4	468	-7.8	0.0	74	-4.8	6.4	36,796	3.1	2.0
Sector 11, Agriculture, forestry, fishing & hunting	22	13.0	10.8	58	7.5	13.2	16	1.6	23.1	17,065	-1.2	4.1
Sector 21, Mining	28	-4.3	2.1	410	-9.7	-1.2	58	-6.5	3.6	39,603	4.6	2.7
Construction	301	3.0	3.8	1,635	9.3	5.8	158	4.1	5.2	31,035	2.7	3.7
Sector 23, Construction	301	3.0	3.8	1,635	9.3	5.8	158	4.1	5.2	31,035	2.7	3.7
Manufacturing	127	0.6	-1.1	3,753	-5.9	-3.6	981	-6.6	-2.9	40,906	6.9	4.7
Durable Goods	81	1.9	-1.0	3,244	-6.7	-3.4	805	-6.0	-3.0	42,735	7.5	5.0
Non-Durable Goods	46	-1.6	-1.5	509	0.0	-4.3	176	-9.2	-2.6	29,254	4.1	1.5
Service Providing - Private	1,802	-1.8	-0.2	18,334	-0.6	0.2	10,170	0.2	0.6	27,256	4.5	4.2
Trade, Transportation, and Utilities	604	-4.3	-1.6	6,260	-0.1	0.4	2,782	0.8	0.2	28,133	4.6	4.3
Sector 42, Wholesale trade	115	-4.6	-1.6	902	-3.6	-0.7	191	-3.5	-0.9	34,465	-1.1	3.0
Sector 44-45, Retail trade	432	-4.4	-1.7	4,303	1.4	0.7	2,208	1.8	0.0	21,970	4.6	5.3
Sector 48-49, Transportation & warehousing	n	n	n	n	n	n	n	n	n	n	n	n
Sector 22, Utilities	n	n	n	n	n	n	n	n	n	n	n	n
Information	36	-5.2	-0.9	454	-2.0	-0.3	207	-1.7	2.8	31,571	6.7	4.0
Sector 51, Information	36	-5.2	-0.9	454	-2.0	-0.3	207	-1.7	2.8	31,571	6.7	4.0
Financial Activities	156	3.6	-2.5	898	-0.1	-1.4	574	0.9	0.3	34,215	0.7	5.0
Sector 52, Finance and Insurance	77	1.0	-4.7	562	0.8	-1.9	418	3.0	1.0	39,783	2.9	5.2
Sector 53, Real estate & rental & leasing	79	6.4	0.1	337	-1.7	-0.4	156	-4.2	-1.4	24,930	-5.5	5.2
Professional and Business Services	329	-0.9	2.7	1,923	-1.0	1.4	942	-0.1	2.6	35,644	3.3	2.5
Sector 54, Professional, scientific, & technical svcs.	204	-1.3	2.8	1,004	0.3	0.6	579	0.0	2.0	38,635	6.4	2.8
Sector 55, Mgt. of companies & enterprises	n	n	n	n	n	n	n	n	n	n	n	n
Sector 56, Administrative & waste services	n	n	n	n	n	n	n	n	n	n	n	n
Education & Health Services	201	-2.0	1.8	4,153	2.2	2.3	3,271	2.1	2.3	32,266	4.3	4.2
Sector 61, Educational services	20	-4.9	4.4	338	-1.1	2.3	203	4.7	2.3	25,775	6.7	2.4
Sector 62, Health care & social assistance	182	-1.6	1.5	3,815	2.5	2.3	3,069	2.0	2.3	32,841	4.0	4.3
Leisure and Hospitality	264	1.5	-0.3	3,741	-4.0	-2.1	2,004	-2.8	-2.3	15,398	3.8	3.2
Sector 71, Arts, entertainment, & recreation	38	4.1	2.7	231	12.7	4.2	91	6.5	1.4	14,113	-5.8	1.5
Sector 72, Accommodation & food services	225	1.1	-0.7	3,511	-5.0	-2.5	1,913	-3.2	-2.5	15,483	4.5	3.3
Other Services	212	-3.3	0.2	905	-0.2	-0.1	390	-3.8	0.6	20,338	4.6	3.0
Sector 81, Other services, except public admin.	212	-3.3	0.2	905	-0.2	-0.1	390	-3.8	0.6	20,338	4.6	3.0
Government Ownership	168	0.9	0.6	4,362	-3.1	-0.3	2,414	-4.2	1.0	31,517	5.9	3.9
Federal Government /1	64	2.4	2.9	386	-1.3	0.5	-	-	-	44,744	3.2	3.5
491 Postal service	46	0.0	3.0	203	-5.5	-0.8	-	-	-	38,315	5.2	3.2
Other Federal Government	18	9.2	2.7	183	3.9	2.0	-	-	-	51,890	0.1	3.3
State Government	24	0.0	-3.0	975	1.4	-5.7	360	-1.8	-6.5	37,319	3.6	5.0
Sector 61, Educational Services	3	0.0	0.0	357	3.8	0.8	153	-0.6	-3.3	29,653	1.6	2.8
Other State Government	21	0.0	-3.4	618	0.0	-8.5	207	-2.6	-8.5	41,746	4.8	6.5
Local Government	80	0.0	0.1	3,001	-4.7	1.8	2,054	-4.6	2.7	27,930	6.8	4.0
Sector 61, Educational Services	31	0.0	-0.5	2,221	-4.9	1.7	1,793	-3.8	2.8	28,868	6.8	4.0
Other Local Government	49	0.0	0.4	780	-3.9	2.1	261	-9.8	2.2	25,259	6.9	3.9

See footnotes at end of table.

Table 3

Vermont County and Industry Sectors, 2003, total covered

annual average with percent change from 2002 and 1998, units, employment, women, average wage

NAICS Major Industry Group	Reporting			Employment						Average		
	2003	Units		Total			Women			Wage		
		Pct change		Pct change			Pct change			Pct change		
		From	Avg/2	2,003	From	Avg/2	2,003	From	Avg/2	2,003	From	Avg/2
	2002	98-03		2002	98-03		2002	98-03		2002	98-03	
	%	%		%	%		%	%		%	%	
23. Washington - Total Covered	2,481	1.8	0.6	31,927	-0.7	1.6	15,937	-0.1	2.4	31,902	4.5	4.5
Private Ownership	2,257	1.9	0.4	23,973	-1.2	1.0	11,597	-0.3	1.2	30,552	4.8	4.5
Goods Producing - Private	415	4.9	1.1	4,343	-3.1	-0.8	1,059	-0.7	0.7	34,058	1.0	3.3
Natural Resources and Mining	22	6.0	3.5	233	-1.3	-0.6	33	3.9	3.9	34,080	3.4	3.0
Sector 11, Agriculture, forestry, fishing & hunting	15	8.9	5.4	95	-3.0	4.4	26	1.9	4.1	21,010	6.5	1.4
Sector 21, Mining	7	0.0	0.0	138	-0.1	-3.3	7	12.5	3.3	43,044	1.7	4.8
Construction	242	9.0	3.1	1,225	3.2	0.7	154	9.8	5.5	30,973	1.7	3.9
Sector 23, Construction	242	9.0	3.1	1,225	3.2	0.7	154	9.8	5.5	30,973	1.7	3.9
Manufacturing	151	-1.3	-1.9	2,886	-5.7	-1.4	872	-2.6	-0.1	35,365	0.9	3.2
Durable Goods	108	-2.0	-0.6	1,294	-15.6	-4.7	271	-8.5	-3.6	38,396	-1.5	3.2
Non-Durable Goods	43	0.6	-4.8	1,592	4.2	1.8	602	0.4	1.8	32,901	5.8	3.9
Service Providing - Private	1,843	1.2	0.3	19,630	-0.8	1.4	10,538	-0.3	1.2	29,776	5.9	4.9
Trade, Transportation, and Utilities	542	-1.5	-1.1	5,582	-2.8	0.9	2,158	-3.8	0.4	26,495	2.6	4.1
Sector 42, Wholesale trade	117	5.9	1.1	935	-5.7	0.2	290	-14.6	-1.0	39,721	-3.1	5.0
Sector 44-45, Retail trade	381	-2.4	-1.6	4,042	0.3	1.3	1,751	-0.6	0.8	22,386	4.5	4.3
Sector 48-49, Transportation & warehousing	38	-11.7	-3.0	516	-19.3	0.8	95	-22.0	-3.2	30,956	14.1	4.0
Sector 22, Utilities	6	0.0	-0.8	89	4.1	-5.4	23	4.7	-1.1	48,292	0.9	1.9
Information	52	-6.3	1.9	669	-1.9	0.8	277	-1.8	-0.3	34,263	3.5	2.3
Sector 51, Information	52	-6.3	1.9	669	-1.9	0.8	277	-1.8	-0.3	34,263	3.5	2.3
Financial Activities	175	7.1	1.6	2,613	-1.9	2.1	1,678	-2.4	1.6	49,051	8.8	4.7
Sector 52, Finance and Insurance	110	12.5	2.1	2,335	-0.6	2.0	1,569	-2.1	1.7	51,872	8.4	4.7
Sector 53, Real estate & rental & leasing	65	-1.1	0.8	278	-11.9	2.7	109	-6.8	0.6	25,325	3.6	6.4
Professional and Business Services	372	0.8	2.2	1,818	-0.6	2.1	826	-1.1	2.2	36,899	8.9	6.6
Sector 54, Professional, scientific, & technical svcs.	275	-0.6	2.6	1,175	0.8	5.3	557	2.0	4.5	44,356	9.0	5.1
Sector 55, Mgt. of companies & enterprises	n	n	n	n	n	n	n	n	n	n	n	n
Sector 56, Administrative & waste services	n	n	n	n	n	n	n	n	n	n	n	n
Education & Health Services	237	5.7	0.7	4,881	2.6	2.8	3,459	2.1	2.1	29,849	5.5	4.8
Sector 61, Educational services	38	11.9	6.8	1,219	3.3	2.8	603	3.8	1.0	31,099	4.5	3.9
Sector 62, Health care & social assistance	199	4.6	-0.3	3,662	2.4	2.8	2,856	1.7	2.3	29,433	5.8	5.1
Leisure and Hospitality	203	5.7	0.3	2,821	-0.4	-0.1	1,460	2.7	0.6	13,717	6.0	4.4
Sector 71, Arts, entertainment, & recreation	35	8.5	3.5	356	6.3	7.0	174	2.5	7.1	15,140	10.4	5.1
Sector 72, Accommodation & food services	168	5.2	-0.3	2,465	-1.3	-0.9	1,286	2.7	-0.2	13,512	5.3	4.2
Other Services	263	-1.8	-0.8	1,246	-1.9	0.4	679	0.7	-0.1	27,332	8.6	5.8
Sector 81, Other services, except public admin.	263	-1.8	-0.8	1,246	-1.9	0.4	679	0.7	-0.1	27,332	8.6	5.8
Government Ownership	224	1.2	2.6	7,954	1.0	3.4	4,340	0.3	6.2	35,971	3.5	4.3
Federal Government /1	62	3.3	1.2	311	-1.4	0.0	-	-	-	45,521	1.8	3.0
491 Postal service	36	0.7	0.4	172	-3.6	-0.2	-	-	-	37,956	1.4	1.8
Other Federal Government	26	7.2	2.3	139	1.5	0.4	-	-	-	54,886	1.2	4.1
State Government	74	0.0	6.9	4,861	1.4	4.4	2,422	1.1	10.2	39,595	3.6	4.9
Sector 61, Educational Services	4	0.0	0.0	116	3.8	-4.2	78	4.4	-5.4	35,852	1.2	10.1
Other State Government	70	0.0	7.4	4,745	1.3	4.7	2,345	0.9	11.1	39,687	3.6	4.7
Local Government	88	0.9	0.6	2,783	0.6	2.1	1,917	-0.6	2.2	28,577	3.4	2.9
Sector 61, Educational Services	22	0.0	0.0	2,013	-0.2	1.6	1,609	-1.5	1.8	28,966	3.5	2.8
Other Local Government	66	1.2	0.9	771	2.7	3.2	309	4.5	4.5	27,559	3.0	3.3

See footnotes at end of table.

Table 3

Vermont County and Industry Sectors, 2003, total covered

annual average with percent change from 2002 and 1988, units, employment, women, average wage

NAICS Major Industry Group	Reporting			Employment						Average		
	2003	Units		Total			Women			Wage		
		Pct change		Pct change			Pct change			Pct change		
		From	Avg/2	2,003	From	Avg/2	2,003	From	Avg/2	2,003	From	Avg/2
	2002	98-03		2002	98-03		2002	98-03		2002	98-03	
	%	%		%	%		%	%		%	%	
25. Windham - Total Covered	1,914	0.6	0.1	22,877	-2.3	-1.0	11,233	-1.3	-0.1	31,883	3.1	4.2
Private Ownership	1,789	0.6	0.1	20,061	-2.7	-1.3	9,501	-1.8	-0.6	32,259	3.0	4.3
Goods Producing - Private	386	1.6	0.4	3,827	-5.8	-4.7	1,074	-9.1	-5.5	36,636	4.9	4.1
Natural Resources and Mining	37	-5.7	3.6	280	-6.9	-5.5	130	-10.4	-9.0	25,989	5.4	4.1
Sector 11, Agriculture, forestry, fishing & hunting	n	n	n	n	n	n	n	n	n	n	n	n
Sector 21, Mining	n	n	n	n	n	n	n	n	n	n	n	n
Construction	234	3.8	1.0	1,033	4.9	1.0	143	2.1	2.3	31,017	-0.7	2.3
Sector 23, Construction	234	3.8	1.0	1,033	4.9	1.0	143	2.1	2.3	31,017	-0.7	2.3
Manufacturing	114	-0.2	-1.5	2,514	-9.5	-6.4	801	-10.7	-5.9	40,131	7.5	4.9
Durable Goods	78	0.3	0.5	1,674	-7.5	-2.9	553	-9.9	-1.3	37,246	6.3	4.4
Non-Durable Goods	37	-1.4	-5.2	840	-13.1	-11.7	248	-12.5	-13.0	45,877	10.3	6.5
Service Providing - Private	1,403	0.4	0.1	16,234	-1.9	-0.4	8,426	-0.8	0.2	31,227	2.6	4.6
Trade, Transportation, and Utilities	405	-0.2	-1.6	5,564	-3.5	-0.1	2,065	-2.9	1.4	39,898	2.4	5.8
Sector 42, Wholesale trade	69	-1.4	-2.7	1,617	0.6	0.4	529	1.9	2.7	54,567	10.0	8.1
Sector 44-45, Retail trade	282	-0.4	-1.1	2,817	-5.2	0.2	1,343	-4.8	1.6	23,144	1.8	4.8
Sector 48-49, Transportation & warehousing	n	n	n	n	n	n	n	n	n	n	n	n
Sector 22, Utilities	n	n	n	n	n	n	n	n	n	n	n	n
Information	39	-1.3	-2.6	363	-3.2	-0.6	162	-6.8	1.8	33,405	7.2	5.8
Sector 51, Information	39	-1.3	-2.6	363	-3.2	-0.6	162	-6.8	1.8	33,405	7.2	5.8
Financial Activities	139	5.1	1.4	916	3.5	-4.8	579	1.0	-3.4	37,805	6.2	4.1
Sector 52, Finance and Insurance	59	4.4	-2.0	630	0.5	-7.7	454	-0.5	-5.7	41,577	3.0	4.5
Sector 53, Real estate & rental & leasing	80	5.6	4.5	285	10.8	4.6	126	6.6	9.0	29,468	22.7	6.7
Professional and Business Services	249	-3.1	1.0	1,198	-11.0	-3.7	536	-7.8	-2.3	35,321	-7.8	1.9
Sector 54, Professional, scientific, & technical svcs.	n	n	n	n	n	n	n	n	n	n	n	n
Sector 55, Mgt. of companies & enterprises	n	n	n	n	n	n	n	n	n	n	n	n
Sector 56, Administrative & waste services	93	0.5	0.5	622	-10.4	-5.3	231	-1.6	-3.1	28,501	-16.9	1.0
Education & Health Services	182	4.2	1.8	3,933	2.0	1.1	2,870	1.9	0.8	31,085	5.3	5.1
Sector 61, Educational services	30	0.8	0.7	1,432	-4.4	1.4	920	-2.2	1.3	31,675	8.1	5.2
Sector 62, Health care & social assistance	152	4.8	2.1	2,502	6.1	0.9	1,950	4.0	0.6	30,747	3.7	5.1
Leisure and Hospitality	236	0.1	1.0	3,581	-1.4	-0.1	1,861	0.5	-0.5	16,600	5.8	3.3
Sector 71, Arts, entertainment, & recreation	33	-0.7	3.1	159	-3.4	-0.2	71	-5.3	-0.2	19,242	44.1	8.9
Sector 72, Accommodation & food services	203	0.2	0.6	3,422	-1.3	-0.1	1,790	0.8	-0.5	16,477	4.2	3.0
Other Services	155	0.2	-0.5	679	-2.3	0.2	354	-5.6	1.0	20,848	4.1	2.2
Sector 81, Other services, except public admin.	155	0.2	-0.5	679	-2.3	0.2	354	-5.6	1.0	20,848	4.1	2.2
Government Ownership	126	0.0	-0.6	2,815	0.7	1.8	1,732	2.0	2.6	29,208	4.1	2.8
Federal Government /1	47	1.1	1.6	184	-0.3	-0.2	-	-	-	40,200	-0.5	2.2
491 Postal service	35	1.4	1.5	139	-1.6	-0.8	-	-	-	37,135	0.4	2.2
Other Federal Government	12	0.0	1.8	45	3.8	1.9	-	-	-	49,636	-3.5	1.7
State Government	9	0.0	-11.9	175	1.8	-6.6	75	-4.2	-10.1	34,113	1.5	3.3
Sector 61, Educational Services	2	0.0	0.0	53	4.3	-1.9	30	-9.0	-4.1	18,443	-7.2	11.0
Other State Government	7	0.0	-14.1	122	0.8	-8.3	44	-0.6	-13.2	40,852	3.9	3.4
Local Government	70	-0.7	0.1	2,457	0.7	2.8	1,658	2.3	3.4	28,037	4.8	3.1
Sector 61, Educational Services	25	-2.0	-0.4	1,719	0.7	3.0	1,325	1.4	3.3	28,613	5.4	2.5
Other Local Government	45	0.0	0.5	738	0.6	2.2	333	6.1	3.8	26,694	3.5	4.6

See footnotes at end of table.

Table 3

Vermont County and Industry Sectors, 2003, total covered

annual average with percent change from 2002 and 1998, units, employment, women, average wage

NAICS Major Industry Group	Reporting			Employment						Average		
	2003	Units		Total			Women			Wage		
		Pct change		Pct change			Pct change			Pct change		
		From	Avg/2	2,003	From	Avg/2	2,003	From	Avg/2	2,003	From	Avg/2
	2002	98-03		2002	98-03		2002	98-03		2002	98-03	
	%	%		%	%		%	%		%	%	
27. Windsor - Total Covered	2,401	2.0	0.7	23,259	0.8	0.2	11,101	2.0	1.0	30,083	3.1	3.8
Private Ownership	2,220	2.1	0.8	18,492	0.9	0.0	8,956	1.9	0.8	28,472	2.8	3.6
Goods Producing - Private	535	4.6	1.9	3,921	-1.6	-3.9	944	-2.2	-2.6	33,449	3.0	2.6
Natural Resources and Mining	50	16.2	8.8	301	4.8	5.0	82	-0.3	4.4	29,265	7.8	2.3
Sector 11, Agriculture, forestry, fishing & hunting	44	15.7	10.4	210	10.8	9.1	75	0.7	4.4	19,563	2.6	7.4
Sector 21, Mining	6	20.0	0.0	91	-6.8	-2.0	8	-8.8	4.4	51,672	20.7	3.8
Construction	346	6.6	3.2	1,438	0.9	3.7	182	13.6	7.2	31,150	1.1	3.9
Sector 23, Construction	346	6.6	3.2	1,438	0.9	3.7	182	13.6	7.2	31,150	1.1	3.9
Manufacturing	139	-3.5	-2.6	2,182	-4.0	-8.3	680	-5.9	-5.1	35,542	3.9	2.7
Durable Goods	98	-2.5	-2.0	1,279	-5.5	-11.3	349	-7.1	-5.1	35,612	2.7	2.5
Non-Durable Goods	41	-5.7	-3.8	903	-1.8	-2.5	331	-4.5	-5.1	35,444	5.8	3.4
Service Providing - Private	1,684	1.4	0.4	14,571	1.6	1.2	8,012	2.4	1.3	27,133	3.0	4.4
Trade, Transportation, and Utilities	457	-0.5	-1.9	4,118	-0.4	1.3	1,649	1.3	-0.1	26,880	3.2	3.8
Sector 42, Wholesale trade	88	-0.8	-0.5	678	33.6	10.0	205	36.2	7.8	38,758	0.7	2.9
Sector 44-45, Retail trade	318	-0.3	-2.3	2,813	-6.8	-0.4	1,306	-3.8	-1.6	22,713	-0.2	3.4
Sector 48-49, Transportation & warehousing	44	-1.7	-2.1	541	3.6	2.9	127	16.2	8.0	28,906	2.0	2.6
Sector 22, Utilities	8	0.0	-0.6	86	-1.7	-2.3	11	0.0	-6.6	56,822	5.9	1.7
Information	53	-0.5	-0.1	689	-1.3	-1.8	378	-3.9	-3.9	39,487	3.7	6.6
Sector 51, Information	53	-0.5	-0.1	689	-1.3	-1.8	378	-3.9	-3.9	39,487	3.7	6.6
Financial Activities	170	1.0	0.9	798	6.5	2.5	494	3.2	1.2	39,272	3.3	5.1
Sector 52, Finance and Insurance	89	3.5	1.0	469	7.4	0.6	335	4.9	-0.5	47,479	5.8	5.7
Sector 53, Real estate & rental & leasing	81	-1.5	0.8	328	5.3	5.7	159	-0.2	5.3	27,541	-3.1	5.9
Professional and Business Services	343	3.5	2.2	1,583	1.3	-0.3	715	3.6	0.4	37,594	3.2	3.9
Sector 54, Professional, scientific, & technical svcs.	233	5.0	3.1	1,096	4.2	1.1	558	5.0	2.0	42,934	4.2	2.0
Sector 55, Mgt. of companies & enterprises	n	n	n	n	n	n	n	n	n	n	n	n
Sector 56, Administrative & waste services	n	n	n	n	n	n	n	n	n	n	n	n
Education & Health Services	200	4.0	3.9	3,021	4.1	3.4	2,411	3.1	3.6	29,224	2.3	4.1
Sector 61, Educational services	25	4.3	4.1	312	4.9	4.1	197	4.8	6.0	34,500	0.5	3.3
Sector 62, Health care & social assistance	176	4.0	3.9	2,709	4.1	3.3	2,214	2.9	3.4	28,617	2.5	4.2
Leisure and Hospitality	235	3.7	0.1	3,465	1.6	-0.1	1,905	2.7	0.6	16,264	2.2	3.8
Sector 71, Arts, entertainment, & recreation	38	10.1	4.0	385	13.9	4.7	211	14.7	5.3	18,285	-1.8	1.0
Sector 72, Accommodation & food services	197	2.6	-0.6	3,080	0.3	-0.6	1,695	1.3	0.1	16,011	2.5	4.0
Other Services	227	-1.9	0.2	898	1.5	3.3	460	4.3	4.5	24,480	2.8	6.5
Sector 81, Other services, except public admin.	227	-1.9	0.2	898	1.5	3.3	460	4.3	4.5	24,480	2.8	6.5
Government Ownership	181	0.7	-0.2	4,768	0.4	1.0	2,145	2.7	1.8	36,334	4.2	4.3
Federal Government /1	68	1.9	0.7	1,316	-3.1	-1.1	-	-	-	50,865	6.9	5.0
491 Postal service	53	0.5	1.2	520	-9.4	-3.5	-	-	-	47,588	10.2	4.2
Other Federal Government	15	7.1	-0.7	795	1.5	0.7	-	-	-	53,008	4.3	5.4
State Government	26	0.0	-2.2	629	1.6	4.0	258	1.1	1.7	38,027	3.3	6.6
Sector 61, Educational Services	3	0.0	-5.6	79	10.3	-3.2	32	-7.9	-6.2	17,379	-2.8	13.9
Other State Government	23	0.0	-1.7	549	0.5	5.3	226	2.5	3.2	41,013	4.3	5.3
Local Government	87	0.0	-0.2	2,824	1.8	1.5	1,887	2.9	1.9	29,187	3.4	3.9
Sector 61, Educational Services	27	0.0	0.0	2,048	1.1	1.1	1,619	3.4	2.1	29,535	3.5	4.0
Other Local Government	60	0.0	-0.3	776	3.7	2.6	268	-0.1	0.6	28,265	3.1	3.5

See notes at end of table.

Table 3

Vermont County and Industry Sectors, 2003, total covered

annual average with percent change from 2002 and 1988, units, employment, women, average wage

NAICS Major Industry Group	Reporting			Employment						Average		
	2003	Units		Total			Women			Wage		
		Pct change		Pct change			Pct change			Pct change		
		From	Avg/2	2,003	From	Avg/2	2,003	From	Avg/2	2,003	From	Avg/2
	2002	98-03		2002	98-03		2002	98-03		2002	98-03	
	%	%		%	%		%	%		%	%	
99. Other /3 - Total Covered	875	7.7	9.0	4,945	15.2	9.7	2,737	31.0	19.5	29,223	-3.3	-0.4
Private Ownership	871	7.6	9.0	4,801	15.7	12.9	2,692	31.8	23.3	28,869	-3.6	-0.7
Goods Producing - Private	74	-2.9	3.1	501	-3.5	7.2	44	-7.3	-3.0	42,136	5.9	6.0
Natural Resources and Mining	n	n	n	n	n	n	n	n	n	n	n	n
Sector 11, Agriculture, forestry, fishing & hunting	n	n	n	n	n	n	n	n	n	n	n	n
Sector 21, Mining	-	-	-	-	-	-	-	-	-	-	-	-
Construction	61	2.1	4.7	373	0.3	5.9	30	14.2	0.0	37,800	3.9	3.8
Sector 23, Construction	61	2.1	4.7	373	0.3	5.9	30	14.2	0.0	37,800	3.9	3.8
Manufacturing	n	n	n	n	n	n	n	n	n	n	n	n
Durable Goods	n	n	n	n	n	n	n	n	n	n	n	n
Non-Durable Goods	n	n	n	n	n	n	n	n	n	n	n	n
Service Providing - Private	797	8.7	9.7	4,300	18.4	13.7	2,648	32.7	24.3	27,323	-4.3	-1.7
Trade, Transportation, and Utilities	344	4.2	6.3	835	-9.3	-0.9	269	-9.0	-0.1	56,739	10.8	7.4
Sector 42, Wholesale trade	268	6.2	7.3	640	2.8	3.6	206	19.3	3.5	62,438	3.5	6.1
Sector 44-45, Retail trade	59	-6.0	0.6	160	-34.3	-13.1	61	-41.4	-7.6	37,985	12.1	5.3
Sector 48-49, Transportation & warehousing	17	15.0	14.5	35	-36.3	15.6	2	-89.3	-17.6	38,225	52.4	5.8
Sector 22, Utilities	-	-	-	-	-	-	-	-	-	-	-	-
Information	30	-10.5	10.9	98	-15.5	22.6	17	-9.6	12.3	29,841	9.3	-1.3
Sector 51, Information	30	-10.5	10.9	98	-15.5	22.6	17	-9.6	12.3	29,841	9.3	-1.3
Financial Activities	45	22.4	12.5	127	1.3	15.8	56	1.8	44.1	50,953	47.5	3.4
Sector 52, Finance and Insurance	n	n	n	n	n	n	n	n	n	n	n	n
Sector 53, Real estate & rental & leasing	n	n	n	n	n	n	n	n	n	n	n	n
Professional and Business Services	292	12.4	13.9	926	7.2	-2.1	378	26.6	-3.3	38,012	9.8	12.5
Sector 54, Professional, scientific, & technical svcs.	n	n	n	n	n	n	n	n	n	n	n	n
Sector 55, Mgt. of companies & enterprises	n	n	n	n	n	n	n	n	n	n	n	n
Sector 56, Administrative & waste services	109	18.5	11.0	536	3.5	-7.1	238	16.8	-8.5	30,809	9.4	14.2
Education & Health Services	34	24.1	15.6	2,229	47.6	75.5	1,908	47.3	75.1	9,673	-1.8	-14.9
Sector 61, Educational services	15	38.1	23.7	26	32.8	17.9	14	64.7	13.3	17,398	37.7	38.7
Sector 62, Health care & social assistance	19	15.2	11.1	2,202	47.8	78.2	1,894	47.2	77.2	9,581	-2.3	-16.4
Leisure and Hospitality	12	9.1	-4.0	24	-31.4	-22.9	9	-58.8	-23.4	54,428	18.6	17.1
Sector 71, Arts, entertainment, & recreation	n	n	n	n	n	n	n	n	n	n	n	n
Sector 72, Accommodation & food services	n	n	n	n	n	n	n	n	n	n	n	n
Other Services	41	14.8	12.4	61	2.8	10.1	11	2.3	4.0	43,686	0.9	-0.9
Sector 81, Other services, except public admin.	41	14.8	12.4	61	2.8	10.1	11	2.3	4.0	43,686	0.9	-0.9
Government Ownership	4	33.3	14.9	144	1.9	-22.2	45	-2.7	-24.0	41,026	6.2	7.2
Federal Government /1	2	100.0	14.9	4	114.9	15.4	-	-	-	61,994	234.9	31.5
491 Postal service	1	0.0	0.0	2	-5.0	-2.0	-	-	-	19,243	4.0	4.1
Other Federal Government	1	-	-	2	-	-	-	-	-	95,831	-	-
State Government	2	0.0	14.9	140	0.6	-22.5	45	-2.7	-24.0	40,490	4.2	6.8
Sector 61, Educational Services	-	-	-	-	-	-	-	-	-	-	-	-
Other State Government	2	0.0	14.9	140	0.6	-22.5	45	-2.7	-24.0	40,490	4.2	6.8
Local Government	-	-	-	-	-	-	-	-	-	-	-	-
Sector 61, Educational Services	-	-	-	-	-	-	-	-	-	-	-	-
Other Local Government	-	-	-	-	-	-	-	-	-	-	-	-

/1 Female employment is not collected by Federal government.

n = Data is confidential.

na = Data is unavailable.

/2 Avg is compounded annual average percent change.

- = Zero reporting units, employment, or wages.

/3 Location of business is statewide, countywide.

NOTE: detail may not add to totals due to rounding.

NOTE: Changes may be influenced by reclassification of specific firms and or improved multiple worksite information.

Table 4

Vermont Size Class By NAICS Based Industry, 2003, private ownership
annual average establishments and annual average employment

Sector	Total	Size of establishments								
		4 or fewer workers	5 to 9 workers	10 to 19 workers	20 to 49 workers	50 to 99 workers	100 to 249 workers	250 to 499 workers	500 to 999 workers	1,000 plus workers
Total Private										
Annual average firms	20,372	12,473	3,643	2,241	1,323	353	235	61	30	13
% of total	100.0	61.2	17.9	11.0	6.5	1.7	1.2	0.3	0.1	0.1
Annual average employment	244,531	25,626	24,649	30,329	39,867	23,822	35,352	20,920	19,609	24,357
% of total	100.0	10.5	10.1	12.4	16.3	9.7	14.5	8.6	8.0	10.0
11. Agriculture, Forestry, Fishing and Hunting										
Annual average firms	353	203	92	48	9	---	1	---	---	---
% of total	100.0	57.5	26.0	13.7	2.6	---	0.3	---	---	---
Annual average employment	2,166	n	677	642	249	---	n	---	---	---
% of total	100.0	n	31.3	29.6	11.5	---	n	---	---	---
21. Mining										
Annual average firms	57	39	5	5	6	1	1	---	---	---
% of total	100.0	68.3	8.8	8.8	10.6	1.8	1.8	---	---	---
Annual average employment	670	87	31	87	189	n	n	---	---	---
% of total	100.0	13.0	4.7	12.9	28.3	n	n	---	---	---
22. Utilities										
Annual average firms	31	16	5	2	2	3	2	1	1	---
% of total	100.0	49.6	16.0	5.6	6.4	9.6	6.4	3.2	3.2	---
Annual average employment	1,732	38	33	n	n	216	n	n	n	---
% of total	100.0	2.2	1.9	n	n	12.5	n	n	n	---
23. Construction										
Annual average firms	2,908	2,176	436	195	81	14	7	---	---	---
% of total	100.0	74.8	15.0	6.7	2.8	0.5	0.2	---	---	---
Annual average employment	15,491	4,672	3,169	2,859	2,612	1,080	1,100	---	---	---
% of total	100.0	30.2	20.5	18.5	16.9	7.0	7.1	---	---	---
31-33. Manufacturing										
Annual average firms	1,143	480	203	168	149	67	52	17	5	2
% of total	100.0	42.0	17.8	14.7	13.0	5.9	4.5	1.5	0.4	0.2
Annual average employment	37,954	n	1,365	2,343	4,672	4,458	7,475	5,537	3,177	n
% of total	100.0	n	3.6	6.2	12.3	11.7	19.7	14.6	8.4	n
42. Wholesale Trade										
Annual average firms	1,239	853	183	96	77	19	9	1	1	---
% of total	100.0	68.9	14.8	7.8	6.2	1.5	0.7	0.1	0.1	---
Annual average employment	10,118	1,342	1,249	1,328	2,312	1,210	1,348	n	n	---
% of total	100.0	13.3	12.3	13.1	22.8	12.0	13.3	n	n	---
44-45. Retail Trade										
Annual average firms	2,997	1,439	744	470	240	58	34	7	2	3
% of total	100.0	48.0	24.8	15.7	8.0	1.9	1.1	0.2	0.1	0.1
Annual average employment	39,735	n	5,037	6,276	7,526	3,879	5,171	2,565	n	4,599
% of total	100.0	n	12.7	15.8	18.9	9.8	13.0	6.5	n	11.6
48-49. Transportation and Warehousing										
Annual average firms	526	311	87	48	59	9	11	---	1	---
% of total	100.0	59.2	16.6	9.1	11.1	1.7	2.1	---	0.2	---
Annual average employment	6,130	n	592	619	1,780	741	1,255	---	n	---
% of total	100.0	n	9.7	10.1	29.0	12.1	20.5	---	n	---
51. Information										
Annual average firms	436	239	71	62	38	14	9	2	1	---
% of total	100.0	54.9	16.3	14.1	8.7	3.2	2.1	0.5	0.2	---
Annual average employment	6,496	427	473	803	1,102	868	1,463	n	n	---
% of total	100.0	6.6	7.3	12.4	17.0	13.4	22.5	n	n	---

See footnotes at end of table.

Vermont Size Class By NAICS Based Industry, 2003, private ownership
annual average establishments and annual average employment

Sector	Total	Size of establishments								
		4 or fewer workers	5 to 9 workers	10 to 19 workers	20 to 49 workers	50 to 99 workers	100 to 249 workers	250 to 499 workers	500 to 999 workers	1,000 plus workers
52. Finance and Insurance										
Annual average firms	643	411	98	61	31	25	13	2	2	1
% of total	100.0	63.9	15.2	9.4	4.9	3.9	1.9	0.3	0.3	0.2
Annual average employment	9,885	783	644	778	981	1,605	1,879	n	n	n
% of total	100.0	7.9	6.5	7.9	9.9	16.2	19.0	n	n	n
53. Real Estate, Rental and Leasing										
Annual average firms	663	502	79	56	24	3	---	---	---	---
% of total	100.0	75.6	11.9	8.4	3.6	0.5	---	---	---	---
Annual average employment	3,061	961	501	724	692	183	---	---	---	---
% of total	100.0	31.4	16.4	23.6	22.6	6.0	---	---	---	---
54. Professional, scientific and Technical Services										
Annual average firms	2,398	1,800	336	170	66	20	5	2	---	---
% of total	100.0	75.1	14.0	7.1	2.8	0.8	0.2	0.1	---	---
Annual average employment	12,241	n	2,161	2,215	1,857	1,332	902	n	---	---
% of total	100.0	n	17.7	18.1	15.2	10.9	7.4	n	---	---
55. Management of Companies and Enterprises										
Annual average firms	20	13	4	1	---	1	1	---	---	---
% of total	100.0	66.7	17.9	5.1	---	5.1	5.1	---	---	---
Annual average employment	273	21	20	n	---	n	n	---	---	---
% of total	100.0	7.7	7.5	n	---	n	n	---	---	---
56. Administrative and Waste Services										
Annual average firms	1,059	765	143	74	53	17	7	1	---	---
% of total	100.0	72.2	13.5	7.0	5.0	1.6	0.7	0.1	---	---
Annual average employment	7,857	n	961	1,001	1,605	1,013	1,302	n	---	---
% of total	100.0	n	12.2	12.7	20.4	12.9	16.6	n	---	---
61. Educational Services										
Annual average firms	287	148	37	28	41	10	18	3	2	1
% of total	100.0	51.4	12.8	9.6	14.3	3.5	6.3	1.0	0.7	0.3
Annual average employment	9,083	335	252	369	1,178	628	2,732	1,015	n	n
% of total	100.0	3.7	2.8	4.1	13.0	6.9	30.1	11.2	n	n
62. Health Care and Social Assistance										
Annual average firms	1,526	699	365	228	126	39	40	17	10	2
% of total	100.0	45.8	23.9	14.9	8.3	2.6	2.6	1.1	0.7	0.1
Annual average employment	39,681	n	2,386	3,085	3,707	2,786	6,503	6,113	6,947	n
% of total	100.0	n	6.0	7.8	9.3	7.0	16.4	15.4	17.5	n
71. Arts, Entertainment and Recreation										
Annual average firms	365	238	62	35	24	2	2	1	1	---
% of total	100.0	65.2	16.9	9.7	6.6	0.5	0.5	0.3	0.3	---
Annual average employment	3,600	819	560	489	732	n	n	n	n	---
% of total	100.0	22.7	15.6	13.6	20.3	n	n	n	n	---
72. Accommodation and Food Services										
Annual average firms	1,689	671	327	358	253	45	22	6	4	4
% of total	100.0	39.7	19.4	21.2	15.0	2.6	1.3	0.4	0.2	0.2
Annual average employment	29,038	1,792	2,199	4,899	7,301	2,997	3,040	1,719	2,297	2,796
% of total	100.0	6.2	7.6	16.9	25.1	10.3	10.5	5.9	7.9	9.6
81. Other services, except public administration										
Annual average firms	2,034	1,474	368	137	45	7	2	1	---	---
% of total	100.0	72.5	18.1	6.7	2.2	0.3	0.1	0.0	---	---
Annual average employment	9,321	2,754	2,339	1,784	1,309	482	n	n	---	---
% of total	100.0	29.5	25.1	19.1	14.0	5.2	n	n	---	---

Note: Detail may not add to totals due to rounding.

n = Data is confidential.

Dash = Zero establishments.

Source: Quarterly Census of Employment and Wages, produced in cooperation with the U.S. Bureau of Labor Statistics
released: December 2009

Table 5

Vermont Size Class By County, 2003, private ownership
annual average establishments and annual average employment

County	Total	Size of establishments								
		4 or fewer workers	5 to 9 workers	10 to 19 workers	20 to 49 workers	50 to 99 workers	100 to 249 workers	250 to 499 workers	500 to 999 workers	1,000 plus workers
Total Private										
Annual average firms	20,372	12,473	3,643	2,241	1,323	353	235	61	30	13
% of total	100.0	61.2	17.9	11.0	6.5	1.7	1.2	0.3	0.1	0.1
Annual average employment	244,531	25,626	24,649	30,329	39,867	23,822	35,352	20,920	19,609	24,357
% of total	100.0	10.5	10.1	12.4	16.3	9.7	14.5	8.6	8.0	10.0
01. Addison										
Annual average firms	1,064	662	204	105	62	20	7	2	1	1
% of total	100.0	62.2	19.2	9.9	5.8	1.9	0.7	0.2	0.1	0.1
Annual average employment	11,523	1,381	1,371	1,445	1,953	1,392	1,182	n	n	n
% of total	100.0	12.0	11.9	12.5	16.9	12.1	10.3	n	n	n
03. Bennington										
Annual average firms	1,361	802	278	169	80	10	13	7	2	---
% of total	100.0	59.0	20.4	12.4	5.9	0.7	1.0	0.5	0.1	---
Annual average employment	14,549	n	1,921	2,243	2,363	623	1,872	2,474	n	---
% of total	100.0	n	13.2	15.4	16.2	4.3	12.9	17.0	n	---
05. Caledonia										
Annual average firms	792	456	175	82	54	13	12	2	---	---
% of total	100.0	57.5	22.1	10.3	6.8	1.6	1.5	0.3	---	---
Annual average employment	8,171	n	1,215	1,096	1,553	899	1,827	n	---	---
% of total	100.0	n	14.9	13.4	19.0	11.0	22.4	n	---	---
07. Chittenden										
Annual average firms	4,960	2,703	901	663	441	134	83	19	12	6
% of total	100.0	54.5	18.2	13.4	8.9	2.7	1.7	0.4	0.2	0.1
Annual average employment	88,577	5,436	6,221	9,045	13,882	9,228	12,562	6,850	7,658	17,695
% of total	100.0	6.1	7.0	10.2	15.7	10.4	14.2	7.7	8.6	20.0
09. Essex										
Annual average firms	120	90	18	9	3	---	---	---	1	---
% of total	100.0	74.4	15.2	7.3	2.3	---	---	---	0.8	---
Annual average employment	1,403	n	115	97	67	---	---	---	n	---
% of total	100.0	n	8.2	6.9	4.7	---	---	---	n	---
11. Franklin										
Annual average firms	963	577	183	122	46	16	15	3	2	---
% of total	100.0	60.0	19.0	12.6	4.8	1.7	1.5	0.3	0.2	---
Annual average employment	11,110	n	1,234	1,672	1,396	1,186	2,490	867	n	---
% of total	100.0	n	11.1	15.1	12.6	10.7	22.4	7.8	n	---
13. Grand Isle										
Annual average firms	160	117	32	8	1	1	---	---	---	---
% of total	100.0	73.5	20.2	5.0	0.6	0.6	---	---	---	---
Annual average employment	780	287	205	148	n	n	---	---	---	---
% of total	100.0	36.8	26.3	18.9	n	n	---	---	---	---

See footnotes at end of table.

Vermont Size Class By County, 2003, private ownership
annual average establishments and annual average employment

County	Total	Size of establishments								
		4 or fewer workers	5 to 9 workers	10 to 19 workers	20 to 49 workers	50 to 99 workers	100 to 249 workers	250 to 499 workers	500 to 999 workers	1,000 plus workers
15. Lamoille										
Annual average firms	892	564	152	99	57	9	7	2	2	---
% of total	100.0	63.2	17.1	11.1	6.3	1.0	0.8	0.2	0.2	---
Annual average employment	8,302	1,203	1,019	1,358	1,568	621	958	n	n	---
% of total	100.0	14.5	12.3	16.4	18.9	7.5	11.5	n	n	---
17. Orange										
Annual average firms	700	473	114	57	33	18	4	1	---	---
% of total	100.0	67.6	16.3	8.1	4.7	2.6	0.6	0.1	---	---
Annual average employment	5,643	n	755	758	985	1,198	561	n	---	---
% of total	100.0	n	13.4	13.4	17.5	21.2	9.9	n	---	---
19. Orleans										
Annual average firms	758	497	132	61	49	12	4	3	1	---
% of total	100.0	65.6	17.4	8.0	6.4	1.6	0.5	0.4	0.1	---
Annual average employment	7,267	n	918	852	1,491	750	532	963	n	---
% of total	100.0	n	12.6	11.7	20.5	10.3	7.3	13.2	n	---
21. Rutland										
Annual average firms	2,048	1,251	381	219	131	35	25	3	1	3
% of total	100.0	61.1	18.6	10.7	6.4	1.7	1.2	0.1	0.0	0.1
Annual average employment	22,690	n	2,523	2,842	3,871	2,132	4,001	800	n	3,309
% of total	100.0	n	11.1	12.5	17.1	9.4	17.6	3.5	n	14.6
23. Washington										
Annual average firms	2,030	1,233	371	228	131	30	27	6	5	---
% of total	100.0	60.7	18.3	11.2	6.4	1.5	1.3	0.3	0.2	---
Annual average employment	23,398	2,604	2,480	3,160	3,869	1,940	3,839	1,999	3,508	---
% of total	100.0	11.1	10.6	13.5	16.5	8.3	16.4	8.5	15.0	---
25. Windham										
Annual average firms	1,660	1,019	298	182	102	27	24	5	1	2
% of total	100.0	61.4	18.0	11.0	6.1	1.6	1.4	0.3	0.1	0.1
Annual average employment	18,815	2,179	1,927	2,400	2,987	1,827	3,326	1,856	n	n
% of total	100.0	11.6	10.2	12.8	15.9	9.7	17.7	9.9	n	n
27. Windsor										
Annual average firms	2,048	1,327	341	213	121	26	13	7	---	1
% of total	100.0	64.8	16.6	10.4	5.9	1.3	0.6	0.3	---	0.0
Annual average employment	17,752	n	2,335	2,858	3,427	1,671	1,843	2,223	---	n
% of total	100.0	n	13.2	16.1	19.3	9.4	10.4	12.5	---	n
99. County unspecified										
Annual average firms	817	704	64	26	16	3	2	1	2	---
% of total	100.0	86.1	7.8	3.2	1.9	0.4	0.2	0.1	0.2	---
Annual average employment	4,552	930	411	357	425	247	n	n	n	---
% of total	100.0	20.4	9.0	7.9	9.3	5.4	n	n	n	---

Note: Detail may not add to totals due to rounding.

n = Data is confidential.

Dash = Zero establishments.

Source: Quarterly Census of Employment and Wages, produced in cooperation with the U.S. Bureau of Labor Statistics
released: December 2009

EXPLANATION of TERMS

Annual Average Employment or Jobs:

The employment figures in this report are an average of the monthly employment figures for the calendar year. In some industries where there are significant seasonal changes in the number employed during the year, the annual average employment will differ significantly from the level of employment for any part of the year. Employment is the same as the number of jobs.

Annual Average Wage:

The annual average wage is a figure computed from total wages and average employment (total annual wages/annual average employment). Because it is an average of aggregate data the annual average wage should not be used to estimate hourly wages. Hourly information is not reported by employers. Employment and wage data cover hourly workers, salaried workers and persons paid on a commission basis and who may be working full-time, part-time, or overtime. The annual average employment and wage figures can be influenced by the mix of these items and should be interpreted with caution.

Confidentiality Standards:

Confidentiality standards apply to private sector data only. The publication of data that would disclose an individual firm's employment or wage information is prohibited under the Bureau of Labor Statistic's guidelines of confidentiality. Aggregate data is not published if it represents fewer than three private employers or if one private employer represents 80% or more of the data. In addition, Vermont does not publish data with fewer than ten private sector employees. All government data is publishable.

Covered Employer:

An employer is covered if wages of at least \$1,500 are paid during a calendar quarter; or employs at least one worker for some part of a day in each of 20 different weeks in a calendar year; or is required to pay Federal Unemployment Tax because individuals in another state(s) were employed or for some other reason; or pays cash wages of \$1,000 or more in any calendar quarter for domestic services in a private home; or pays cash wages of \$20,000 or more in any calendar quarter for agricultural services, or employ ten or more workers in agricultural employment; or furnishes employment in a charitable, or educational environment to four or more workers for some part of a day in each of 20 different weeks in a calendar year; or is the State or any political subdivision thereof; or voluntarily elects to provide unemployment coverage to workers even though it is not required.

Covered Employment and Wages:

The data in this report refers to the employees and their wages in firms subject to the Vermont Unemployment Compensation Law, or for federal employees, the Federal Unemployment Compensation Law. Workers who are not included are the self-employed, firm owners not incorporated and the following employee groups: elected officials, nonprofit religious, charitable and educational organizations, unpaid family members, farm (with some exceptions) and railroad (see definition for Covered Employer) workers.

Data Source:

Data is compiled from quarterly reports submitted by employers. The reports contain monthly employment information for the pay period that includes the 12th of the month and total wages paid in the quarter.

Growth or Increase in the Number of Jobs:

All information referring to growth in this report is based on net changes. The amount of growth during any time period is equal to the number of jobs (or wages) gained minus the number of jobs (wages) lost.

Industry Groups or NAICS:

Beginning with the publication of 2001 annual data, the North American Industry Classification System (NAICS) is used to group industries. NAICS replaced the Standard Industrial Classification (SIC) system in the U.S., and is used by all North American governmental and many private organizations for the purposes of uniformity in presenting statistical data. The NAICS classification structure groups industries based on similar production processes. For more information on NAICS, please visit the Bureau of Labor Statistics website, <http://www.bls.gov/bls/naics.htm>.

Ownership - Private and Governmental:

The ownership of establishments is classified as either Private or Government. Government employers are further classified by the level of government: Local (operated by town), State (operated by the State) or Federal (operated by the United States Government).

Reclassification of Specific Firms:

In an active economy many firms change their physical location and some change their primary business activity. To maintain and update location and activity information all employers are surveyed during a three year cycle. The resulting changes are effective at the start of the next calendar year. While this improves the accuracy of data analysis, it also introduces fluctuations in the data from year to year due to these administrative changes.

Reporting Units, Establishments, Worksites and Employers:

A reporting unit is the smallest economic unit for which data is reported. An establishment is an economic unit, such as a farm, factory, or store, which produces goods or provides services at a single physical worksite and engaged, predominantly, in one type of economic activity. Most employers operate only one establishment or place of business so all of their activity is reported under one reporting unit. Employers who operate more than one establishment in the state are requested to report each worksite separately. In some cases the employer aggregates the worksites into several units, though not at the establishment level. Occasionally, a single physical location encompasses two or more distinct and significant activities that, if possible, are reported as separate units. In these cases, a reporting unit is only one worksite, or a group of worksites, or part of a worksite and not all of an employers' activity in the state.

Seasonal Activity:

Seasonal activity in Vermont industries produces significant variation in employment levels during the year. The annual average provides a convenient summary of the year's employment and wages. By definition, however, it obscures the peaks and valleys.

Size Class:

Each reporting unit is assigned to one of nine size class categories based upon March employment. It is important to note that for multi-establishment employers size class is based on each worksite, not the firm's total employment.

Unclassified County Data:

A small percentage of covered employment and total wages is not classified by county. In these cases the employees' work is not performed at a given physical location, e.g., traveling salespeople.

North American Industry Classification System (NAICS) Two Digit Sector and Three Digit Subsector

SECTOR 11, Agriculture, forestry, fishing & hunting

- 111 Crop production
- 112 Animal production
- 113 Forestry & logging
- 114 Fishing, hunting & trapping
- 115 Agriculture & forestry support activities

SECTOR 21, Mining

- 211 Oil & gas extraction
- 212 Mining, except oil & gas
- 213 Support activities for mining

SECTOR 22, Utilities

- 221 Utilities

SECTOR 23, Construction

- 236 Construction of buildings
- 237 Heavy & civil engineering construction
- 238 Specialty trade contractors

SECTOR 31-33, Manufacturing

- 311 Food Mfg.
- 312 Beverage & tobacco product mfg.
- 313 Textile mills
- 314 Textile product mills
- 315 Apparel manufacturing
- 316 Leather & allied product mfg.
- 321 Wood product manufacturing
- 322 Paper manufacturing
- 323 Printing & related support activities
- 324 Petroleum & coal products mfg.
- 325 Chemical manufacturing
- 326 Plastics & rubber products mfg.
- 327 Nonmetallic mineral product mfg.
- 331 Primary metal manufacturing
- 332 Fabricated metal product mfg.
- 333 Machinery manufacturing
- 334 Computer & electronic product mfg.
- 335 Electrical equipment & appliance mfg.
- 336 Transportation equipment mfg.
- 337 Furniture & related product mfg.
- 339 Miscellaneous manufacturing

SECTOR 42, Wholesale trade

- 423 Merchant wholesalers, durable goods
- 424 Merchant wholesalers, nondurable goods
- 425 Electronic markets & agents & brokers

SECTOR 44-45, Retail trade

- 441 Motor vehicle & parts dealers
- 442 Furniture & home furnishings stores
- 443 Electronics & appliance stores
- 444 Building material & garden supply stores
- 445 Food & beverage stores
- 446 Health & personal care stores
- 447 Gasoline stations
- 448 Clothing & clothing accessories stores
- 451 Sporting goods, hobby, book & music stores
- 452 General merchandise stores
- 453 Miscellaneous store retailers
- 454 Nonstore retailers

SECTOR 48-49, Transportation & warehousing

- 481 Air transportation
- 482 Rail transportation
- 483 Water transportation
- 484 Truck transportation
- 485 Transit & ground passenger transport
- 486 Pipeline transportation
- 487 Scenic & sightseeing transportation
- 488 Support activities for transportation
- 491 Postal service
- 492 Couriers & messengers
- 493 Warehousing & storage

SECTOR 51, Information

- 511 Publishing industries, except Internet
- 512 Motion picture & sound recording industries
- 515 Broadcasting, except Internet
- 516 Internet publishing & broadcasting
- 517 Telecommunications
- 518 ISPs, search portals, & data processing
- 519 Other information services

SECTOR 52, Finance & insurance

- 521 Monetary authorities - central bank
- 522 Credit intermediation & related activities
- 523 Securities, commodity contracts, investments
- 524 Insurance carriers & related activities
- 525 Funds, trusts, & other financial vehicles

SECTOR 53, Real estate & rental & leasing

- 531 Real estate
- 532 Rental & leasing services
- 533 Lessors of nonfinancial intangible assets

North American Industry Classification System (NAICS)
Two Digit Sector and Three Digit Subsector
(continued)

SECTOR 54, Professional & technical services

541 Professional & technical services

SECTOR 55, Management of companies & enterprises

551 Mgt of companies & enterprises

SECTOR 56, Administrative & waste services

561 Administrative & support services

562 Waste mgt & remediation services

SECTOR 61, Educational services

611 Educational services

SECTOR 62, Health care & social assistance

621 Ambulatory health care services

622 Hospitals

623 Nursing & residential care facilities

624 Social assistance

SECTOR 71, Arts, entertainment, & recreation

711 Performing arts & spectator sports

712 Museums, historical sites, zoos, & parks

713 Amusements, gambling, & recreation

SECTOR 72, Accommodation & food services

721 Accommodation

722 Food services & drinking places

SECTOR 81, Other services, except public administrati

811 Repair & maintenance

812 Personal & laundry services

813 Membership associations & organizations

814 Private households

SECTOR 92, Public administration

(Government employers only)

921 Executive, legislative & general govt

922 Justice, public order, & safety activities

923 Admin of human resource programs

924 Admin of environmental programs

925 Community & housing program admin

926 Administration of economic programs

927 Space research & technology

928 National security & international affairs