

Vermont Department of Labor

Labor Market Information Section



Quarterly Census
of
Employment and Wages

Visit our web site at:

www.vtLmi.info/industry.cfm

For Current and Historical Information

The State of Vermont is an Equal Opportunity/Affirmative Action Employer. Applications from women, individuals with disabilities, and people from diverse cultural backgrounds are encouraged. Auxiliary aids and services are available upon request to individuals with disabilities. 711 (TTY/Relay Service) or (802) 828-4203 TDD (Department of Labor).

Employment and Wages

Covered by Unemployment Insurance

2004

July 2005

**Vermont Department of Labor
Patricia McDonald, Commissioner**

**P.O. Box 488
Montpelier, VT 05602
Telephone (802)828-4202**

Contents

Page

1 Introduction

2 Summary

Employment Conditions

3 Employment & Wages 1995-2004

5 Vermont

9 County

11 Town

2004 Statistics

14 List of Tables

15 Industry Groups

21 County and Town

27 County and Industry

43 Size Class by Industry

45 Size Class by County

Reference

47 Explanation of Terms

49 Industry Titles

Introduction

This publication is prepared by the Labor Market Information Section of the Department of Employment and Training in cooperation with the U. S. Department of Labor, Bureau of Labor Statistics and presents 2004 annual data on employment and wages based on the 2002 North American Industry Classification System (NAICS). Each employer is assigned an appropriate NAICS code which provides the foundation for the following aggregate tables.

The information in this publication is based upon data employers provide to the Department of Employment and Training in conformance with state and federal unemployment insurance laws. The data for both private and public workers are compiled for the Covered Employment and Wages program from the quarterly tax reports submitted to the Department by employers subject to State Unemployment Insurance (UI) laws and Federal Employees (UCFE) program.

To insure quality in the data, the Department edits, processes, and analyzes the data using the Quarterly Census of Employment and Wages (f/k/a WIN-202) data processing system, which includes a series of computer editing programs and data files. This is done on a quarterly basis during the year and the annual data is compiled upon completion of the fourth quarter.

After the information is assimilated, it is utilized in various Department publications as well as shared with the Bureau of Labor Statistics in Washington D.C.

The sections in this publication are:

Employment Conditions

2004 Statistics

Reference

It is important to understand the terms used in this publication as they have definitions that can be very different from their common usage. The “Explanation of Terms” in the reference section contains definitions and explanations of the terminology used in this publication. If you have any questions about this publication, please contact Melissa Butryman at (802) 828-4319 or Lorene Mercier (802) 828-4318.

Summary

The Vermont economy experienced its first job gain in three years. The 1.4 percent employment increase represented a gain of 4,203 jobs, raising the total average employment to 298,491.

In private industry, all goods producing sectors had an overall increase of 1.6 percent, led by a 8.4 percent increase (1,296 jobs) in construction. Service providing jobs increased by 1.4 percent, with the largest increase in education & health services, which grew by 990 jobs or 2.0 percent increase. Government grew by 1.3 percent due to growth in state and local levels.

In 2004, almost 10 billion dollars was paid to workers. This is an increase of 5.2 percent from 2003. The increase of total wages accounted for a 3.7 percent increase in the average annual wage. The average annual wage increased by \$1,186 from 2003 up to \$33,276 in 2004.

Employment continued to be concentrated in three counties: Chittenden, Washington, and Rutland. Combined these three counties account for more than 50 percent of total employment in Vermont. Grand Isle and Essex Counties contributed the lowest numbers of employed which when combined resulted in less than one percent of total employment. Chittenden continued to dominate all counties with the largest share of total annual wages. Only Chittenden and Washington Counties exceeded the Vermont average annual wage of \$33,276 with average wages of \$38,433 and \$33,331 respectively. Grand Isle reported the lowest average annual wage of \$24,299.

There are seven towns in Vermont with employment levels greater than 10,000. They are Burlington, South Burlington, Essex, Rutland City, Brattleboro, Bennington, and Williston. Together these towns account for 36.4 percent of the total employment in Vermont.

There were 54 towns with employment of 1,000 or more. Of those 54 towns, 35 showed an increase in employment, and 19 had a decrease. Of the top ten towns with employment of 1,000 or more, Vernon had the highest annual average wage of \$70,212 followed by Essex with an annual wage of \$51,491. The average annual wage of the top 17 towns exceeded the average annual wage for Vermont. Dover reported the lowest annual wage with \$20,759 followed by Killington with \$22,726.

Table 1

**Vermont Annual Average Employment
1995 - 2004**

Industry - Ownership/Sector	1995	1996	1997	1998	1999	2000	2001	2002	2003	2004
Total Covered - all ownerships	266,028	270,369	274,355	280,294	288,202	296,468	298,168	295,443	294,288	298,491
Private ownership	222,852	227,053	230,707	236,259	243,018	249,122	250,106	246,527	244,531	248,094
Goods Producing	57,860	58,943	59,810	61,563	63,229	64,803	63,918	58,576	55,811	56,714
Agriculture, forestry, fishing and hunting	1,789	1,801	1,872	1,960	2,114	2,206	2,256	2,156	2,174	2,301
Mining	816	842	812	853	894	938	931	829	772	762
Construction	12,534	12,582	12,915	13,691	14,480	14,941	15,218	14,894	15,378	16,674
Manufacturing	42,720	43,718	44,210	45,059	45,741	46,719	45,514	40,697	37,486	36,978
Durable Goods	29,197	30,156	31,147	32,107	32,746	34,031	33,467	29,388	26,741	26,418
Non-Durable Goods	13,523	13,561	13,064	12,952	12,995	12,687	12,047	11,309	10,745	10,560
Service Providing	164,992	168,110	170,897	174,696	179,789	184,319	186,188	187,951	188,720	191,380
Wholesale trade	9,864	9,750	9,676	9,559	9,685	9,946	10,074	10,028	10,256	10,198
Retail trade	35,865	36,513	37,161	37,594	38,597	39,676	39,913	40,104	39,519	40,042
Transportation and warehousing	6,121	6,381	6,419	6,585	6,709	6,794	6,722	6,772	6,574	6,759
Utilities	1,921	1,868	1,869	1,852	1,753	1,692	1,653	1,710	1,726	1,714
Information	5,968	6,215	6,238	6,424	6,648	6,854	6,685	6,653	6,495	6,363
Financial Activities	12,599	12,464	12,529	12,662	12,981	12,664	12,887	12,904	12,989	13,005
Professional and Business Services	16,105	16,946	17,862	19,298	20,448	20,842	20,778	20,376	20,394	21,272
Education and Health Services	37,625	38,229	38,776	39,757	41,236	42,823	44,273	46,850	48,698	49,688
Leisure and Hospitality	30,844	31,319	31,647	32,026	32,534	33,009	32,931	33,059	32,725	33,043
Other services, except public administration	8,080	8,424	8,722	8,939	9,196	10,018	10,270	9,495	9,343	9,297
Government	43,176	43,316	43,648	44,035	45,184	47,345	48,062	48,916	49,575	50,397
Federal Government	5,516	5,481	5,403	5,456	5,605	6,064	5,772	5,930	6,250	6,248
State government	13,689	13,338	13,493	13,385	13,737	14,661	15,163	15,028	15,310	15,656
Local government	23,971	24,497	24,752	25,194	25,841	26,620	27,127	27,959	28,198	28,493

Table 2

**Vermont Annual Average Wage
1995 - 2004**

Industry - Ownership/Sector	1995	1996	1997	1998	1999	2000	2001	2002	2003	2004
Total Covered - all ownerships	23,573	24,479	25,506	26,624	27,589	28,925	30,239	31,041	32,090	33,276
Private ownership	23,122	24,035	25,021	26,209	27,235	28,704	29,920	30,613	31,571	32,724
Goods Producing	29,828	31,173	32,564	33,827	34,914	37,120	38,568	39,455	40,344	41,238
Agriculture, forestry, fishing and hunting	16,560	17,414	17,977	18,619	19,010	19,523	20,617	21,176	21,662	22,361
Mining	31,438	33,214	34,900	35,336	35,824	35,350	35,152	39,056	41,314	39,807
Construction	24,479	25,581	26,552	27,891	29,401	31,356	32,800	32,821	33,388	34,779
Manufacturing	31,922	33,310	34,895	36,264	37,377	39,830	41,455	42,860	44,261	45,354
Durable Goods	34,551	36,200	37,469	38,844	39,869	42,195	44,453	46,324	47,773	48,966
Non-Durable Goods	26,246	26,885	28,757	29,866	31,096	33,486	33,129	33,858	35,521	36,319
Service Providing	20,770	21,533	22,382	23,525	24,534	25,745	26,951	27,858	28,977	30,200
Wholesale trade	30,301	31,824	33,076	34,370	36,274	38,288	41,187	42,756	44,235	44,675
Retail trade	16,542	16,888	17,402	18,230	18,996	19,804	20,873	21,612	22,390	23,439
Transportation and warehousing	24,198	25,075	26,194	26,898	28,041	30,543	30,176	30,601	31,636	32,098
Utilities	47,154	49,335	50,737	56,030	58,134	60,971	64,651	70,366	68,710	78,676
Information	26,571	27,302	28,557	30,467	31,159	33,163	35,402	35,786	37,227	38,874
Financial Activities	28,555	30,572	32,235	34,267	35,334	37,866	39,996	41,590	44,513	46,154
Professional and Business Services	25,197	26,789	28,017	30,207	31,333	33,378	35,543	36,494	38,298	40,197
Education and Health Services	23,575	24,049	24,888	25,681	27,040	28,088	28,941	29,774	30,453	31,705
Leisure and Hospitality	11,266	11,640	12,228	12,802	13,248	13,842	14,211	14,689	15,223	15,976
Other services, except public administration	17,009	18,062	18,438	19,166	19,986	20,552	21,455	22,538	23,677	24,515
Government	25,905	26,806	28,067	28,852	29,493	30,091	31,897	33,198	34,637	35,994
Federal Government	34,754	36,808	39,148	40,158	39,385	40,716	43,868	46,201	47,621	51,269
State government	27,275	28,928	30,557	32,222	33,118	33,255	35,725	38,072	39,573	40,786
Local government	23,086	23,414	24,292	24,612	25,421	25,927	27,210	27,821	29,080	30,011

Table 3

Employment Growth 1995 - 2004

Annual Number Change

Industry - Ownership/Sector	1995	1996	1997	1998	1999	2000	2001	2002	2003	2004
Total Covered - all ownerships	6,655	4,341	3,986	5,939	7,908	8,266	1,700	-2,725	-1,155	4,203
Private ownership	6,222	4,201	3,654	5,552	6,759	6,104	984	-3,579	-1,996	3,563
Goods Producing	1,832	1,083	867	1,753	1,666	1,574	-885	-5,342	-2,765	903
Agriculture, forestry, fishing and hunting	148	12	71	88	154	92	49	-99	18	127
Mining	16	26	-30	41	41	44	-7	-103	-57	-10
Construction	768	48	333	776	789	461	277	-324	484	1,296
Manufacturing	899	998	492	849	682	978	-1,205	-4,817	-3,211	-508
Durable Goods	692	959	991	960	639	1,285	-565	-4,079	-2,647	-323
Non-Durable Goods	207	38	-497	-112	43	-308	-640	-738	-564	-185
Service Providing	4,390	3,118	2,787	3,799	5,093	4,530	1,869	1,763	769	2,660
Wholesale trade	22	-114	-74	-117	126	261	128	-46	228	-58
Retail trade	1,030	648	648	433	1,003	1,079	236	192	-585	523
Transportation and warehousing	448	260	38	166	124	85	-72	50	-198	185
Utilities	-72	-53	1	-17	-99	-62	-38	57	16	-12
Information	128	247	23	186	224	206	-169	-31	-158	-132
Financial Activities	42	-135	65	133	319	-317	224	16	85	16
Professional and Business Services	347	841	916	1,436	1,150	394	-64	-403	18	878
Education and Health Services	1,641	604	547	981	1,479	1,587	1,451	2,576	1,848	990
Leisure and Hospitality	740	475	328	379	508	475	-78	128	-334	318
Other services, except public administration	64	344	298	217	257	822	252	-775	-152	-46
Government	433	140	332	387	1,149	2,161	716	855	841	640
Federal Government	0	-35	-78	53	149	459	-292	158	320	-2
State government	193	-351	155	-108	352	924	501	-135	282	346
Local government	239	526	255	442	647	779	507	832	239	295

Table 4

Employment Growth 1995 - 2004

Annual Percent Change

Industry - Ownership/Sector	1995	1996	1997	1998	1999	2000	2001	2002	2003	2004
Total Covered - all ownerships	2.6	1.6	1.5	2.2	2.8	2.9	0.6	-0.9	-0.4	1.4
Private ownership	2.9	1.9	1.6	2.4	2.9	2.5	0.4	-1.4	-0.8	1.5
Goods Producing	3.3	1.9	1.5	2.9	2.7	2.5	-1.4	-8.4	-4.7	1.6
Agriculture, forestry, fishing and hunting	9.0	0.7	3.9	4.7	7.9	4.4	2.2	-4.4	0.8	5.8
Mining	2.0	3.2	-3.6	5.0	4.8	4.9	-0.7	-11.0	-6.8	-1.3
Construction	6.5	0.4	2.6	6.0	5.8	3.2	1.9	-2.1	3.2	8.4
Manufacturing	2.1	2.3	1.1	1.9	1.5	2.1	-2.6	-10.6	-7.9	-1.4
Durable Goods	2.4	3.3	3.3	3.1	2.0	3.9	-1.7	-12.2	-9.0	-1.2
Non-Durable Goods	1.6	0.3	-3.7	-0.9	0.3	-2.4	-5.0	-6.1	-5.0	-1.7
Service Providing	2.7	1.9	1.7	2.2	2.9	2.5	1.0	0.9	0.4	1.4
Wholesale trade	0.2	-1.2	-0.8	-1.2	1.3	2.7	1.3	-0.5	2.3	-0.6
Retail trade	3.0	1.8	1.8	1.2	2.7	2.8	0.6	0.5	-1.5	1.3
Transportation and warehousing	7.9	4.2	0.6	2.6	1.9	1.3	-1.1	0.7	-2.9	2.8
Utilities	-3.6	-2.8	0.1	-0.9	-5.3	-3.5	-2.3	3.4	1.0	-0.7
Information	2.2	4.1	0.4	3.0	3.5	3.1	-2.5	-0.5	-2.4	-2.0
Financial Activities	0.3	-1.1	0.5	1.1	2.5	-2.4	1.8	0.1	0.7	0.1
Professional and Business Services	2.2	5.2	5.4	8.0	6.0	1.9	-0.3	-1.9	0.1	4.3
Education and Health Services	4.6	1.6	1.4	2.5	3.7	3.8	3.4	5.8	3.9	2.0
Leisure and Hospitality	2.5	1.5	1.0	1.2	1.6	1.5	-0.2	0.4	-1.0	1.0
Other services, except public administration	0.8	4.3	3.5	2.5	2.9	8.9	2.5	-7.5	-1.6	-0.5
Government	1.0	0.3	0.8	0.9	2.6	4.8	1.5	1.8	1.7	1.3
Federal Government	0.0	-0.6	-1.4	1.0	2.7	8.2	-4.8	2.7	5.4	0.0
State government	1.4	-2.6	1.2	-0.8	2.6	6.7	3.4	-0.9	1.9	2.3
Local government	1.0	2.2	1.0	1.8	2.6	3.0	1.9	3.1	0.9	1.0

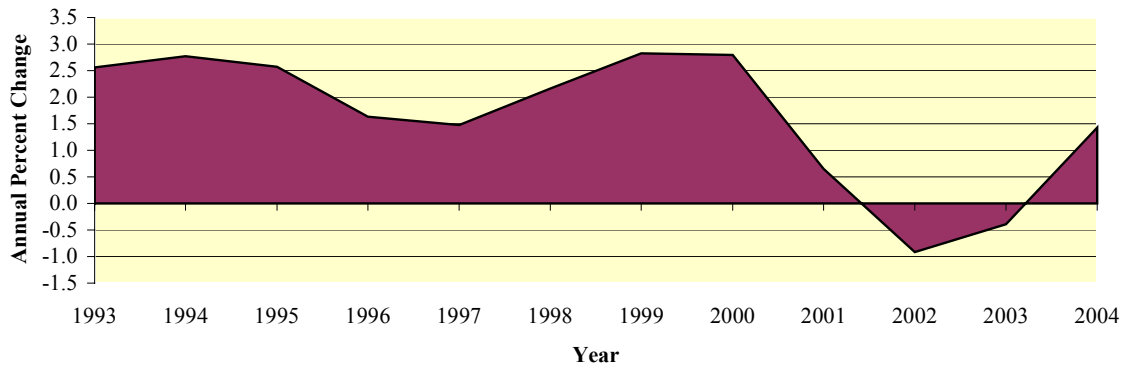
Vermont

Employment

The Vermont annual average employment experienced an increase of 1.4 percent, representing a gain of 4,203 jobs since 2003. This raises the total covered employment by Vermont and Federal insurance laws to 298,491. This is the first year in three years that there has been an increase in jobs.

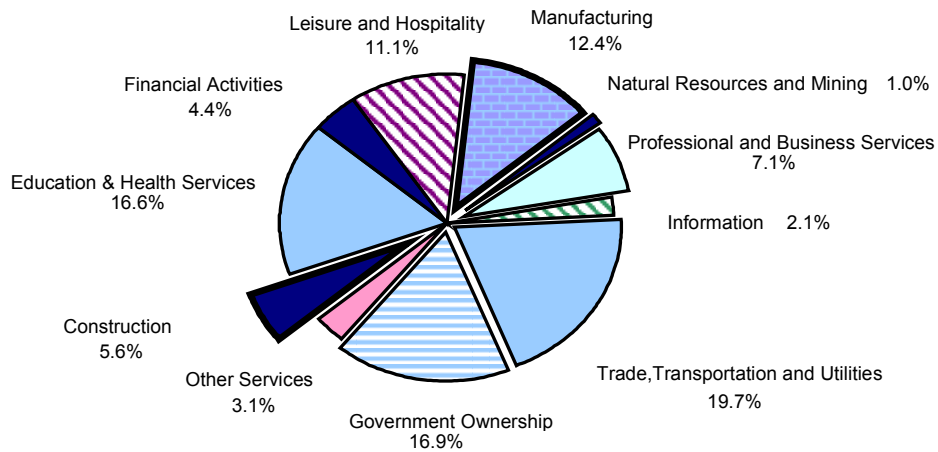
Graph 1

Total Covered Employment - Growth Rate



Graph 2

Private Industry Employment Distribution



Private industry

Jobs in private industry make up 83.1 percent of total employment. Private industry is split by activity into goods producing and service providing industries. Goods producing activities, which account for 22.9 percent of private industry, consist of natural resources and mining, construction, and manufacturing. The rest of the activities are considered service providing. Trade, transportation, and utilities claimed the largest share with 23.7 percent of the jobs in private industry. Information was the smallest with only 2.6 percent of private industry. In Service providing industries over 50,000 jobs were in trade, the bulk of those in retail trade, while education and health services accounted for 49,688 jobs.

Graph 3

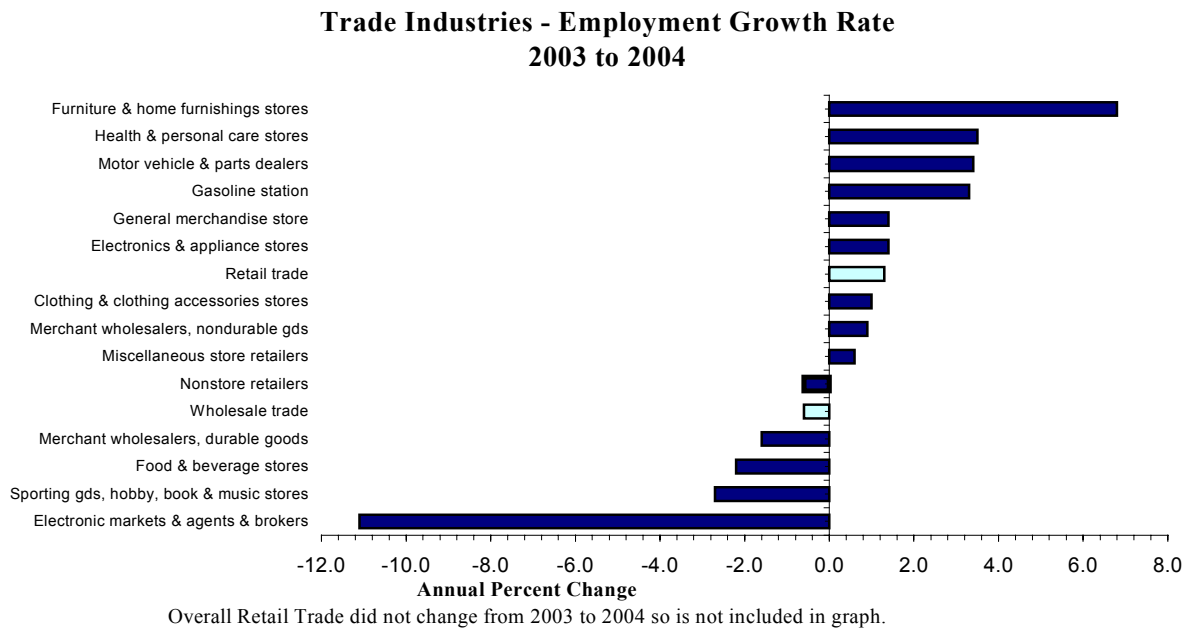


Table 6

Education & Health Services - Private Annual Number and Percent Change

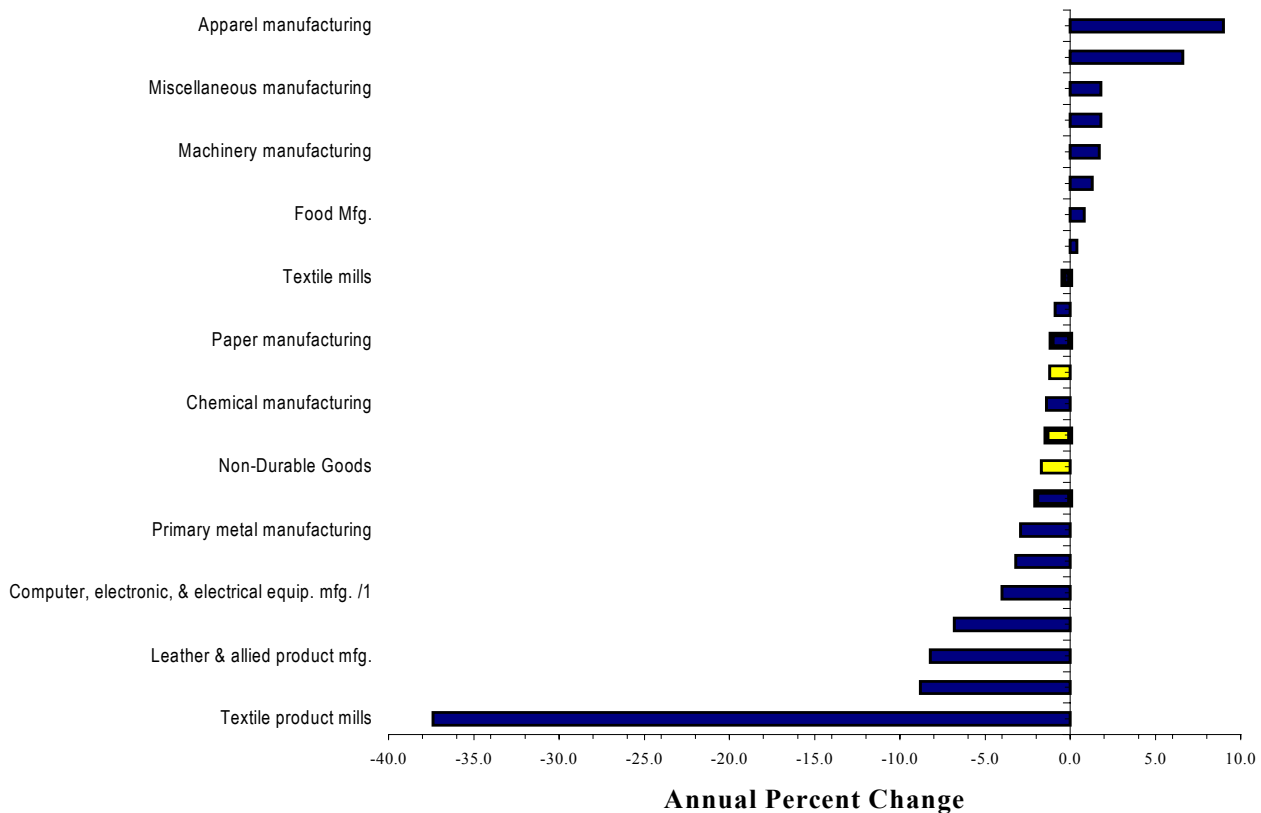
Industry Group	Reporting Units			Employment		
	2004	# change	% change	2004	# change	% change
Education & Health Services	2,155	1	1.9	49,688	989	2.0
Educational services	311	3	4.5	8,973	-32	-0.4
Health Care & Social Assistance	1,843	1	1.5	40,715	1,022	2.6
Ambulatory health care services	1,163	1	1.8	15,796	302	2.0
Hospitals	21	3	0.7	10,324	154	1.5
Nursing & residential care facilities	172	1	0.8	6,590	4	0.1
Social assistance /1	488	2	1.1	8,005	561	7.5

With an increase of 989 new jobs, education and health services had the largest job gains in private industry. Health care and social assistance carried the industry as education services were down by 32 jobs. Social assistance added the most jobs in the industry (561).

Manufacturing represents 14.9 percent of employment in the private sector. It suffered a loss of 1.4 percent of its employment or 509 jobs mostly in durable goods. Textile products suffered the largest percentage loss of employment of 37.4 percent. Apparel manufacturing increased the most by adding 9.0 percent to its employment base.

Graph 4

Manufacturing - Employment Growth Rate



Government

Government represents 16.9 percent of total Vermont employment. It increased by 1.3 percent from 2003. Federal government jobs remained constant through 2004. State government increased by 2.3 percent from 2003 and local government increased by 1.0 percent. Units in state government increased due to a better break down when reporting.

Table 7

Government Employment Changes

2003 - 2004

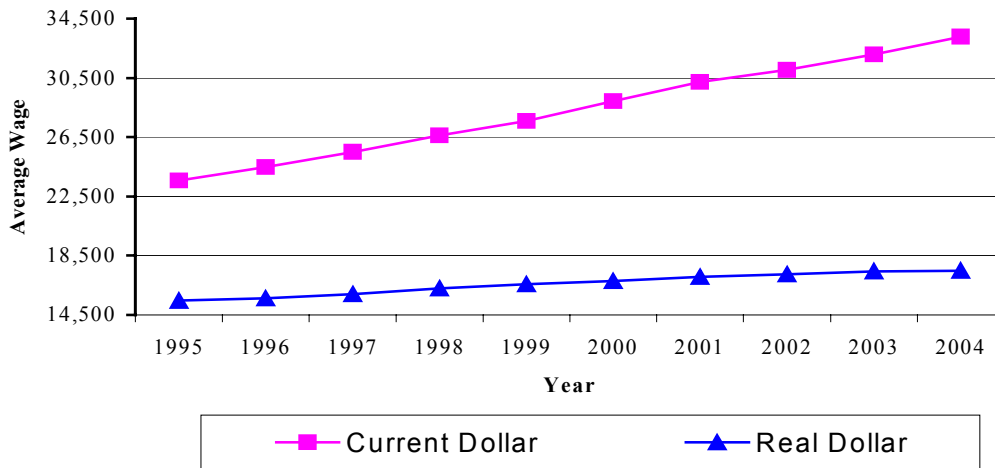
Industry Group	Reporting units		Employment Total		Average Wage	
	2004	% chg	2004	% chg	2004	% chg
Government Ownership	1,768	4.4	50,397	1.3	35,994	3.9
Federal government ownership	620	0.9	6,248	0	51,269	7.7
Postal service	409	0.5	2,147	-2.6	44,256	8.1
Other federal	189	1.7	4,101	1.4	54,941	7.2
State government ownership	318	25.2	15,656	2.3	40,786	3.1
Educational services	29	0	5,782	3.2	38,513	1.7
Other state	289	28.4	9,874	1.7	42,118	3.9
Local government ownership	830	0.6	28,493	1.0	30,011	3.2
Educational services	276	0.0	20,836	1.0	30,444	3.0
Other local	555	0.8	7,656	1.2	28,832	3.8

Wages

More than 10 billion dollars was paid to workers in 2004, up 5.2 percent from 2004. The annual average wage increased to \$33,276. In real dollars, current dollars adjusted for inflation using the CPI-U index, the change in average wages was less than one percent. Although the increase is modest this represents the ninth consecutive year of increasing growth in both current and real dollars.

Graph 5

Average Wage 1995 - 2004



Counties

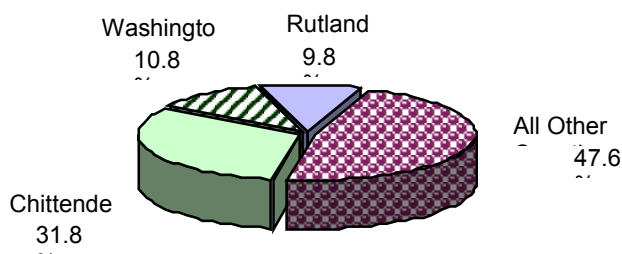
Employment

Chittenden County accounts for 31.8 percent of all employment in Vermont. It is the largest industrial, commercial, and educational center of Vermont. Washington County is next with 10.8 percent of employment, and Rutland County makes up 9.8 percent of employment. Combining just these three counties accounts for more than 50 percent of total employment. Grand Isle and Essex Counties combined have the total employment of less than 1 percent.

Grand Isle experienced the largest growth in employment for the second straight year adding 10.7 percent to last years total. Only three counties experienced a drop in employment from 2003 and all were minimal with Orange County being the largest at 1.7 percent.

Graph 6

**Annual Average Employment by County -
2004**



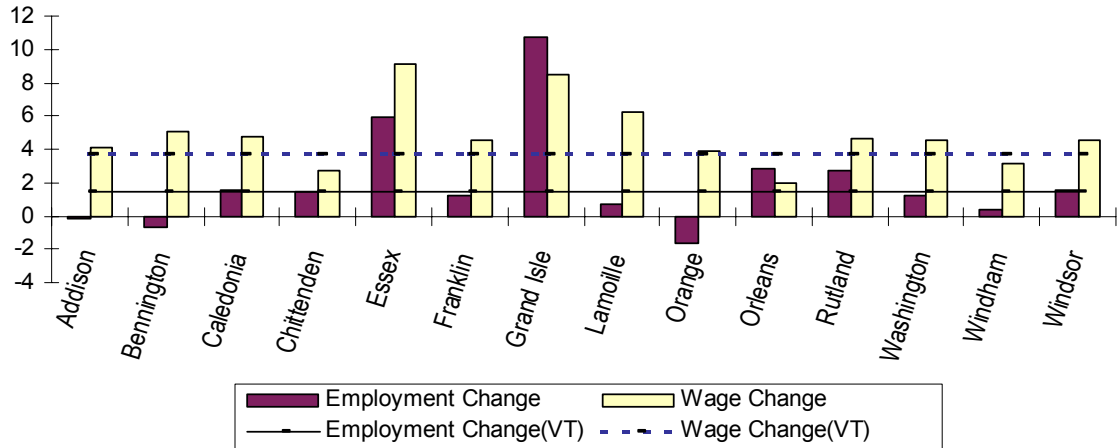
Wages

Chittenden County continued to have the highest average annual wages, and was one of two counties to exceed the Vermont average annual wage of \$33,276. The other county was Washington County. Grand Isle reported the lowest average wage of \$24,299.

Average annual wages increased in all 14 counties from 2003. Essex County experienced the largest increase of 9.1 percent, while Orleans County showed the smallest growth of 2.0 percent. Eleven of the fourteen counties had an increase above the state annual average of 3.7 percent

Graph 7

Average Percentage Change for Employment and Wages by State and County



Reporting Units

Vermont averaged 24,333 reporting units in 2004. Chittenden County accounted for 23.3 percent of the total reporting units. Chittenden, Washington, Windsor, and Rutland counties made up more than 50 percent of the total reporting units. Essex and Grand Isle had the fewest reporting units 390, combined.

Table 8

County Annual Averages

County	Annual Average Reporting Units		Annual Average Employment		Total Annual Wages (\$)		Annual Average Wages (\$)	
	2004	Yr % Change	2004	Yr % Change	2004	Yr % Change	2004	Yr % Change
Vermont	24,333	1.5	298,491	1.4	9,932,494,689	5.2	33,276	3.7
Addison	1,312	2.7	13,878	-0.2	441,699,023	3.9	31,827	4.1
Bennington	1,583	1.1	17,848	-0.7	538,561,072	4.4	30,174	5.1
Caledonia	1,042	2.1	11,542	1.5	317,569,258	6.3	27,514	4.7
Chittenden	5,677	0.8	94,881	1.4	3,646,504,641	4.2	38,433	2.7
Essex	170	-1.5	1,502	5.9	41,786,910	15.5	27,824	9.1
Franklin	1,211	2.1	15,529	1.2	488,266,333	5.7	31,442	4.5
Grand Isle	220	11.0	1,164	10.7	28,288,019	20.1	24,299	8.5
Lamoille	1,055	3.5	10,633	0.7	287,116,923	6.9	27,003	6.2
Orange	860	0.4	7,847	-1.7	215,893,991	2.1	27,513	3.9
Orleans	939	1.3	9,850	2.8	262,372,113	4.9	26,637	2.0
Rutland	2,473	1.0	29,318	2.7	921,889,509	7.4	31,445	4.6
Washington	2,526	1.8	32,294	1.2	1,076,402,295	5.7	33,331	4.5
Windham	1,928	0.7	22,978	0.4	756,408,522	3.7	32,919	3.2
Windsor	2,405	0.2	23,610	1.5	742,439,204	6.1	31,445	4.5
Other /1	936	6.9	5,616	13.6	167,296,877	15.8	29,787	1.9

1/ Location of business activity is statewide, countywide.

Towns

Towns with employment levels of 10,000 or more

There are seven towns in Vermont with employment levels over 10,000. Combined these towns account for 36.4 percent of total employment. Williston experienced the largest percent growth with an increase of 378 jobs. Essex had the largest loss of jobs with a 3.9 percent decrease or 517 jobs lost. Burlington the largest town showed an increase of 757 jobs (2.4 percent) from 2003.

Table 9

Towns With Employment Levels Over 10,000

	Employment	% change from 2003	Wage (\$)	% change from 2003	Units	% change from 2003
Vermont	298,491	1.4	33,276	3.7	24,333	1.5
Burlington	32,579	2.4	38,699	2.5	1,475	-1.4
South Burlington	17,653	3.2	35,570	3.6	1,043	1.1
Rutland City	13,400	2.6	34,121	5.6	986	-0.1
Essex	12,751	-3.9	51,491	2.1	636	0.3
Brattleboro	11,294	0.9	34,335	-3.2	752	0.7
Williston	10,650	3.7	35,498	2.3	684	2.9
Bennington	10,300	-0.8	30,569	4.3	646	1.4
Seven Town Total	108,628				6,220	
% of Vermont	36.4				25.6	

Wages increased in six of the seven towns. Brattleboro showed a 3.2 percent loss. The other six towns showed increases of 2.3 to 5.6 percent. Rutland City showed the largest increase yet was still the town with the lowest overall wage at \$34,121.

Towns with employment levels of 1,000 or more

Employment

There were 54 towns with employment of 1,000 or more. Of those 54 towns, 35 showed an increase in employment, 19 had a decrease. Fifteen had employment increases of more than 100 jobs. The largest gain was in Burlington with an increase of 757 jobs. Six towns showed an increase of more than 200 jobs from 2003. Towns that showed increases of just under 100 jobs were Rockingham and Bethel with 90 additional jobs each. There were six towns with job losses of more than 130. The largest decrease was in Essex with 517 lost jobs, a 3.9 percent decrease, followed by Montpelier, which lost 389 jobs. Middlebury, Randolph, Colchester, St. Albans City, Manchester and Bennington each lost between 85 and 185 jobs during 2003.

Wages

Of the top ten towns with employment of 1,000 or more, Vernon had the highest annual average wage of \$70,212 followed by Essex with an annual wage of \$51,491. The average annual wage of the top 10 towns exceeded the average annual wage for Vermont. Dover reported the lowest annual wage with \$20,759 followed by Killington with \$22,726. Of the lowest ten towns all showed an increase of at least 1.4 percent. Ludlow had the highest annual wage increase at 10.

Table 10

**Highest and Lowest Wage
for Towns with Employment Levels of 1,000 or more
Ranked by Annual Average Wage**

	Annual Average Employment		Annual Average Wage		% change 2003
	Employment	# change 2003	% change 2003	Wage (\$)	
Vermont	298,491	4,203	1.4	33,276	3.7
Top Ten Towns					
Vernon	1,046	68	6.9	70,212	21.3
Essex	12,751	-517	-3.9	51,491	2.1
Vergennes	2,084	-12	-0.6	39,546	7.9
Burlington	32,579	757	2.4	38,699	2.5
Montpelier	8,905	-389	-4.2	37,618	3.4
Hartford	5,990	132	2.2	37,343	5.8
Waterbury	4,267	398	10.3	37,076	4.8
Colchester	8,569	-164	-1.9	36,939	4.8
Milton	2,461	35	1.5	36,408	2.5
Rutland Town	3,676	56	1.6	36,303	7.4
Lowest Ten Towns					
Dover	1,165	-60	-4.9	20,759	2.3
Killington	1,869	-84	-4.3	22,726	4.2
Cambridge	1,264	-25	-1.9	23,052	6.6
Wilmington	1,028	4	0.4	23,711	9.8
Barton	1,391	-43	-3.0	24,448	6.8
Bristol	1,321	123	10.2	25,318	1.8
Stowe	3,796	-15	-0.4	25,552	6.7
Enosburg	1,100	-12	-1.1	25,578	9.5
Ludlow	1,886	23	1.2	25,934	10.0
Bradford	1,465	26	1.8	26,563	1.4

Table 11

Towns with Job Gains of 85 or More in 2004 /1
for Towns with Employment Levels of 1,000 or more
Ranked by Absolute Change in Employment

	Annual Average Employment		Annual Average Wage		
	Employment	# change	% change	Wage (\$)	% change
		2003	2003		2003
Vermont	298,491	4,203	1.4	33,276	3.7
Burlington	32,579	757	2.4	38,699	2.5
South Burlington	17,653	542	3.2	35,570	3.6
Waterbury	4,267	398	10.3	37,076	4.8
Williston	10,650	378	3.7	35,498	2.3
Rutland City	13,400	338	2.6	34,121	5.6
Clarendon	1,306	240	22.6	27,627	-13.7
Shelburne	3,271	165	5.3	29,223	4.5
Newport City	4,396	144	3.4	27,508	-3.8
Hinesburg	1,080	142	15.2	31,830	6.8
Hartford	5,990	132	2.2	37,343	5.8
St. Johnsbury	5,929	130	2.2	28,690	3.4
Bristol	1,321	123	10.2	25,318	1.8
Castleton	1,364	117	9.4	28,053	3.1
St. Albans Town	1,431	113	8.6	29,788	2.7
Brattleboro	11,294	102	0.9	34,335	-3.2
Rockingham	2,534	90	3.7	30,925	12.4
Bethel	1,031	90	9.5	32,445	5.5

Table 12

Towns with Job Losses of 85 or More in 2004 /1
for Towns with Employment Levels of 1,000 or more
Ranked by Absolute Change in Employment

	Annual Average Employment		Annual Average Wage		
	Employment	# change	% change	Wage (\$)	% change
		2003	2003		2003
Vermont	298,491	4,203	1.4	33,276	3.7
Essex	12,751	-517	-3.9	51,491	2.1
Montpelier	8,905	-389	-4.2	37,618	3.4
Middlebury	7,368	-184	-2.4	33,804	7.5
Randolph	2,578	-182	-6.6	29,759	3.3
Colchester	8,569	-164	-1.9	36,939	4.8
St. Albans City	7,566	-136	-1.8	33,619	4.4
Manchester	4,418	-95	-2.1	29,487	6.8
Bennington	10,300	-88	-0.8	30,569	4.3

Of the 255 towns, 54 had employment of 1,000 or more.

/1 Changes may be influenced by administrative changes in employers' addresses from one town to another.

2004 STATISTICS

Page	Table	
15	Table 1	Vermont NAICS Based Industry Groups, 2004 annual average units, employment, women, and average wage with percent changes from 2003
21	Table 2	Vermont County and Town, 2004, total covered annual average with change from 2003 units, employment, women, average wage
27	Table 3	Vermont County and NAICS Based Industry Groups, 2004 annual average units, employment, women, and average wage with percent changes from 2003
43	Table 4	Vermont Size Class by NAICS Based Industry Groups, 2004 private ownership first quarter reporting units and annual average employment
45	Table 5	Vermont Size Class by County, 2004 private ownership first quarter reporting units and annual average employment

Table 1

Vermont UI Covered Employment by NAICS Based Industry Groups

annual average with percent change from 2003 and 1999, units, employment, women, average wage

NAICS Major Industry Group	Reporting			Employment						Average		
	2004	Units		2004	Total		2004	Women		2004	Wage	
		Pct change			Pct change			Pct change			Pct change	
		From 2003 %	Avg/1 99-04 %		From 2003 %	Avg/1 99-03 %		From 2003 %	Avg/1 99-04 %		From 2003 %	Avg/1 99-04 %
Total Covered	24,333	1.5	0.9	298,491	1.4	0.7	146,351	1.4	1.3	33,276	3.7	3.8
Private Ownership	22,566	1.3	0.9	248,094	1.5	0.4	119,140	1.6	1.3	32,724	3.7	3.7
Goods Producing - Private	4,669	2.4	1.8	56,714	1.6	-2.2	13,493	-0.8	-2.9	41,238	2.2	3.4
Natural Resources and Mining	429	1.8	3.1	3,063	3.9	0.4	763	6.3	-0.9	26,701	-0.4	2.1
SECTOR 11, Agriculture, forestry, fishing & hu	366	3.4	3.8	2,301	5.8	1.7	673	6.4	-0.7	22,361	3.2	3.3
111 Crop production	78	-	5.5	480	4.2	-5.2	246	14.4	-4.6	16,504	1.9	0.8
112 Animal production	153	9.9	8.0	1,322	9.1	7.1	273	10.2	6.5	21,837	4.8	4.2
113 Forestry & logging	n	n	n	n	n	n	n	n	n	n	n	n
114 Fishing, hunting & trapping	n	n	n	n	n	n	n	n	n	n	n	n
115 Agriculture & forestry support activities	60	-2.5	1.7	325	-2.0	-1.1	139	-9.2	-3.6	31,741	1.7	3.1
SECTOR 21, Mining	64	-6.3	-0.1	762	-1.3	-3.2	91	5.5	-2.1	39,807	-3.6	2.1
211 Oil & gas extraction	-	-	-	-	-	-	-	-	-	-	-	-
212 Mining, except oil & gas	n	n	n	n	n	n	n	n	n	n	n	n
213 Support activities for mining	n	n	n	n	n	n	n	n	n	n	n	n
Construction	3,032	4.1	3.2	16,674	8.4	2.9	1,813	2.7	3.0	34,779	4.2	3.4
SECTOR 23, Construction	3,032	4.1	3.2	16,674	8.4	2.9	1,813	2.7	3.0	34,779	4.2	3.4
236 Construction of buildings	1,031	3.5	3.2	5,112	7.6	4.9	544	1.6	4.4	34,845	3.6	3.7
237 Heavy & civil engineering construction	175	2.2	-0.7	1,854	4.8	-2.1	249	-3.2	-1.5	43,269	7.0	5.3
238 Specialty trade contractors	1,826	4.6	3.7	9,708	9.6	2.9	1,021	4.8	3.5	33,123	4.0	3.0
Manufacturing	1,208	-1.4	-1.6	36,978	-1.4	-4.2	10,916	-1.9	-3.8	45,354	2.5	3.9
Durable Goods	789	-1.7	-1.0	26,418	-1.2	-4.2	7,187	-1.3	-3.3	48,966	2.5	4.2
321 Wood product manufacturing	127	-2.5	-1.3	2,476	-3.2	-4.4	508	-3.7	-3.5	32,063	-3.6	3.5
327 Nonmetallic mineral product mfg.	153	2.3	1.4	2,051	1.3	-0.8	413	2.9	1.0	39,908	2.9	3.8
331 Primary metal manufacturing	8	-30.4	-8.5	403	-2.9	-7.7	84	3.4	-8.3	42,801	5.5	4.6
332 Fabricated metal product mfg.	107	2.2	0.7	2,834	1.8	-1.4	552	5.7	-1.7	46,652	1.3	4.9
333 Machinery manufacturing	95	-1.3	-3.2	3,024	1.7	-6.6	609	0.5	-4.4	46,753	2.7	3.7
334-335 Computer, electronic, & electrical equip	77	-5.5	-1.7	9,208	-4.0	-4.6	2,935	-4.9	-4.1	62,150	1.8	4.2
336 Transportation equipment mfg.	26	-7.1	-2.3	2,390	6.6	-3.1	567	0.5	-2.8	54,691	6.2	5.2
337 Furniture & related product mfg.	94	-1.6	-1.4	2,114	-6.8	-8.2	567	-5.3	-7.7	30,088	6.8	3.8
339 Miscellaneous manufacturing	104	-2.8	-1.0	1,917	1.8	0.2	954	6.7	1.8	39,062	7.1	3.6
Non-Durable Goods	419	-0.9	-2.7	10,560	-1.7	-4.1	3,730	-3.0	-4.7	36,319	2.2	3.2
311 Food Mfg.	137	1.5	-2.3	3,838	0.8	-0.5	1,359	1.7	0.8	33,599	0.4	3.3
312 Beverage & tobacco product mfg.	19	1.3	1.4	321	-0.9	5.4	85	-1.7	9.2	32,525	4.6	5.2
313 Textile mills	15	-9.4	-6.7	188	-0.4	-9.6	99	-1.0	-4.1	27,372	0.2	-0.5
314 Textile product mills	23	-5.2	-6.5	146	-37.4	-9.7	85	-44.2	-10.9	26,997	2.1	4.9
315 Apparel manufacturing	26	-4.5	-4.5	508	9.0	-8.2	405	11.8	-8.2	25,793	8.5	7.2
316 Leather & allied product mfg.	n	n	n	n	n	n	n	n	n	n	n	n
322 Paper manufacturing	19	-3.8	-7.3	1,329	-1.1	-7.9	249	-2.0	-12.8	45,733	-2.7	3.6
323 Printing & related support activities	102	-2.2	-2.7	1,860	-2.0	-7.3	610	-5.5	-7.7	38,616	4.3	3.4
324 Petroleum & coal products mfg.	n	n	n	n	n	n	n	n	n	n	n	n
325 Chemical manufacturing	37	8.0	1.9	1,366	-1.4	-2.5	474	-5.5	-4.9	38,109	3.6	2.0
326 Plastics & rubber products mfg.	26	-7.9	-2.5	898	-8.8	-4.2	308	-9.6	-6.6	37,179	9.0	3.4

Table 1

Vermont UI Covered Employment by NAICS Based Industry Groups

annual average with percent change from 2003 and 1999, units, employment, women, average wage

NAICS Major Industry Group	Reporting			Employment						Average		
	2004	Units		2004	Total		2004	Women		2004	Wage	
		Pct change			Pct change			Pct change			Pct change	
		From 2003 %	Avg/1 99-04 %		From 2003 %	Avg/1 99-03 %		From 2003 %	Avg/1 99-04 %		From 2003 %	Avg/1 99-04 %
Service Providing - Private	17,897	1.0	0.7	191,380	1.4	1.3	105,647	2.0	1.9	30,200	4.2	4.2
Trade, Transportation, and Utilities	5,609	0.2	-0.4	58,714	1.1	0.7	24,700	2.8	1.0	29,737	3.7	4.2
SECTOR 42, Wholesale trade	1,336	1.7	1.7	10,198	-0.6	1.0	2,784	-1.4	0.3	44,675	1.0	4.3
423 Merchant wholesalers, durable goods	807	4.7	1.3	5,043	-1.6	0.9	1,281	-1.1	0.1	44,846	6.2	4.5
424 Merchant wholesalers, nondurable gds	452	0.4	0.5	4,994	0.9	0.8	1,452	-1.0	-0.1	44,368	-3.7	4.0
425 Electronic markets & agents & brokers	77	-17.4	19.6	161	-11.1	28.1	51	-17.4	37.2	48,857	-3.7	2.4
SECTOR 44-45, Retail trade	3,669	-	-1.0	40,042	1.3	0.7	19,638	3.2	1.0	23,439	4.7	4.3
441 Motor vehicle & parts dealers	411	0.9	-0.2	5,030	3.4	1.7	776	-1.2	1.8	36,449	2.2	3.7
442 Furniture & home furnishings stores	198	6.2	3.2	1,349	6.8	6.4	698	11.0	8.2	27,390	3.7	3.6
443 Electronics & appliance stores	112	-7.1	-6.1	839	1.4	-1.7	209	-3.0	-3.6	26,856	-4.2	-0.3
444 Building material & garden supply stores	318	-1.6	-0.9	3,721	7.7	4.4	1,111	11.7	7.8	28,742	4.6	3.2
445 Food & beverage stores	472	-1.3	-2.6	9,338	-2.2	-0.8	5,192	0.9	-0.5	17,761	2.7	3.9
446 Health & personal care stores	169	-0.1	-2.0	2,040	3.5	2.5	1,289	1.1	2.5	30,615	8.6	5.2
447 Gasoline station	488	0.7	0.4	3,895	3.3	2.2	2,166	8.6	3.5	15,922	3.7	3.7
448 Clothing & clothing accessories stores	322	-3.5	-3.2	2,887	1.0	1.5	2,161	4.7	1.9	16,808	2.3	3.6
451 Sporting gds, hobby, book & music stores	288	1.1	-0.3	2,156	-2.7	0.8	1,090	6.0	3.9	17,097	2.1	3.2
452 General merchandise store	146	3.0	-0.6	2,939	1.4	-4.0	1,972	1.8	-3.9	17,698	4.0	4.9
453 Miscellaneous store retailers	499	-1.6	-0.9	3,155	0.6	1.3	2,003	1.5	1.7	19,248	3.4	4.3
454 Nonstore retailers	247	5.8	0.6	2,692	-0.6	-0.4	972	-1.8	-1.9	37,254	13.0	6.2
SECTOR 48-49, Transportation & warehousing	555	-1.2	-1.2	6,759	2.8	0.1	1,878	5.4	2.6	32,098	1.5	2.7
481 Air transportation	16	16.7	14.5	284	1.3	4.8	91	-2.7	4.1	34,157	6.4	-0.7
482 Rail transportation /2	-	-	-	-	-	-	-	-	-	-	-	-
483 Water transportation	n	n	n	n	n	n	n	n	n	n	n	n
484 Truck transportation	340	-0.1	-0.9	2,593	1.5	-1.5	294	0.7	0.2	37,641	5.1	3.9
485 Transit & grnd passenger transport	69	-4.5	-3.2	1,302	-2.0	0.9	455	-4.3	1.4	17,911	5.2	3.5
486 Pipeline transportation	n	n	n	n	n	n	n	n	n	n	n	n
487 Scenic & sightseeing transportation	8	-	-1.8	72	4.3	5.4	44	25.5	7.0	24,675	-	1.4
488 Support activities for transportation	59	4.0	2.8	492	6.7	1.4	192	-0.9	1.0	39,117	8.2	8.1
491 Postal service	n	n	n	n	n	n	n	n	n	n	n	n
492 Couriers & messengers	34	-5.6	-4.3	1,148	3.1	0.3	292	-3.7	0.7	32,697	5.9	1.9
493 Warehousing & storage	24	-19.0	-8.0	756	15.8	2.7	480	33.9	8.8	31,191	-27.4	-2.3
SECTOR 22, Utilities	50	-5.3	-0.8	1,714	-0.7	-0.5	400	1.2	0.1	78,676	14.5	6.2
221 Utilities	50	-5.3	-0.8	1,714	-0.7	-0.5	400	1.2	0.1	78,676	14.5	6.2
Information	515	1.1	2.6	6,363	-2.0	-0.9	3,203	-1.6	-0.9	38,874	4.4	4.5
Sector 51, Information	515	1.1	2.6	6,363	-2.0	-0.9	3,203	-1.6	-0.9	38,874	4.4	4.5
511 Publishing industries, except Internet	187	0.1	2.8	2,377	-8.5	-1.0	1,174	-9.8	-2.5	34,453	5.1	3.5
512 Motion picture & sound recording inds	77	-1.6	0.4	404	-6.2	-8.6	210	-1.3	-7.4	18,146	7.6	1.0
515 Broadcasting, except Internet	43	11.7	-	722	-3.0	-1.9	251	-7.7	-1.0	35,013	7.7	5.2
516 Internet publishing & broadcasting	n	n	n	n	n	n	n	n	n	n	n	n
517 Telecommunications	121	2.3	5.8	1,539	-8.1	-2.6	652	-7.2	-2.7	60,098	6.6	5.7
518 ISPs, search portals, & data processing	45	-4.8	0.7	866	9.8	3.6	613	6.8	2.9	32,983	-1.3	5.6
519 Other information services	n	n	n	n	n	n	n	n	n	n	n	n
Financial Activities	1,691	2.3	1.0	13,005	0.1	-	8,228	0.8	0.4	46,154	3.7	5.5
SECTOR 52, Finance and Insurance	950	1.0	0.8	9,751	-1.4	-0.5	6,738	-0.6	-0.1	51,827	4.0	5.8

Table 1

Vermont UI Covered Employment by NAICS Based Industry Groups

annual average with percent change from 2003 and 1999, units, employment, women, average wage

NAICS Major Industry Group	Reporting Units			Employment						Average Wage		
	2004	Pct change		Total			Women			2004	Pct change	
		From	Avg/1	From	Avg/1	From	Avg/1	From	Avg/1			
		2003	99-04	2003	99-03	2003	2003	99-04	2003		99-04	
	%	%		%	%		%	%		%	%	
521 Monetary authorities - central bank	n	n	n	n	n	n	n	n	n	n	n	n
522 Credit intermediation & related activities	415	2.3	1.2	5,111	0.4	-0.7	3,802	0.9	-0.2	43,193	-0.2	5.9
523 Securities, commodity cntrcts, invstmnts	128	8.0	4.2	777	3.0	1.0	344	-1.7	-0.6	106,785	15.1	6.5
524 Insurance carriers & related activities	393	-1.9	-0.8	3,805	-3.3	-0.3	2,555	-1.6	0.2	52,160	4.1	5.1
525 Funds, trusts, & other financial vehicles	n	n	n	n	n	n	n	n	n	n	n	n
SECTOR 53, Real estate & rental & leasing	741	3.9	1.4	3,254	4.9	1.7	1,491	8.0	2.7	29,150	5.9	4.8
531 Real estate	557	4.9	2.4	2,007	8.4	3.6	1,042	9.2	4.5	33,555	7.3	6.1
532 Rental & leasing services	n	n	n	n	n	n	n	n	n	n	n	n
533 Lessors of nonfinancial intangible assets	n	n	n	n	n	n	n	n	n	n	n	n
Professional and Business Services	3,635	2.5	2.7	21,272	4.3	0.8	9,424	4.2	0.6	40,197	5.0	5.1
SECTOR 54, Professional, scientific, & technic	2,502	3.2	2.9	12,591	2.9	1.5	6,259	3.1	2.3	48,994	3.7	4.2
541 Professional, scientific & technical services	2,502	3.2	2.9	12,591	2.9	1.5	6,259	3.1	2.3	48,994	3.7	4.2
SECTOR 55, Mgt. of companies & enterprises	23	13.4	-5.7	307	8.7	0.8	139	8.2	-0.4	57,884	-2.7	5.7
551 Mgt of companies & enterprises	23	13.4	-5.7	307	8.7	0.8	139	8.2	-0.4	57,884	-2.7	5.7
SECTOR 56, Administrative & waste services	1,109	0.8	2.4	8,375	6.3	-0.3	3,027	6.4	-2.3	26,324	11.4	6.6
561 Administrative & support services	1,011	0.9	2.4	7,382	5.9	-0.8	2,864	6.4	-2.7	23,861	10.0	6.0
562 Waste mgt & remediation services	98	0.3	2.6	993	8.7	4.5	163	5.7	7.8	44,633	16.2	7.3
Education & Health Services	2,155	1.3	1.9	49,688	2.0	3.8	37,448	2.3	4.0	31,705	4.1	3.2
SECTOR 61, Educational services	311	3.3	4.5	8,973	-0.4	1.4	5,172	-1.3	1.3	33,409	7.6	4.2
611 Educational services	311	3.3	4.5	8,973	-0.4	1.4	5,172	-1.3	1.3	33,409	7.6	4.2
SECTOR 62, Health care & social assistance	1,843	0.9	1.5	40,715	2.6	4.4	32,276	2.9	4.5	31,329	3.3	3.0
621 Ambulatory health care services	1,163	0.6	1.8	15,796	2.0	3.6	12,347	2.0	3.6	36,472	3.8	3.9
622 Hospitals	21	2.5	0.7	10,324	1.5	2.3	8,002	0.7	1.8	39,794	4.1	3.7
623 Nursing & residential care facilities	172	1.2	0.8	6,590	0.1	2.0	5,361	0.1	1.9	23,336	4.8	4.7
624 Social assistance	488	1.6	1.1	8,005	7.5	12.3	6,566	9.9	13.8	16,845	1.2	0.6
Leisure and Hospitality	2,223	1.1	0.9	33,043	1.0	0.3	17,819	1.1	1.4	15,976	4.9	3.8
SECTOR 71, Arts, entertainment, & recreation	390	4.5	2.5	3,718	0.7	3.6	1,843	-0.2	4.4	18,414	12.3	3.2
711 Performing arts & spectator sports	109	3.8	2.6	630	18.5	4.9	268	10.1	3.4	32,441	21.1	2.0
712 Museums, historical sites, zoos, & parks	29	10.6	9.5	417	2.9	2.8	242	1.9	2.1	22,808	3.4	5.4
713 Amusements, gambling, & recreation	252	4.1	1.8	2,671	-3.0	3.4	1,333	-2.4	5.1	14,421	6.3	3.0
SECTOR 72, Accommodation & food services	1,833	0.4	0.6	29,325	1.0	-0.1	15,976	1.2	1.1	15,667	3.9	3.8
721 Accommodation	509	-3.7	-0.5	10,992	-2.0	-1.0	6,235	-1.1	0.4	19,788	4.3	3.7
722 Food services & drinking places	1,324	2.1	1.0	18,333	2.9	0.5	9,741	2.8	1.5	13,196	4.6	4.3
Other Services	2,070	-0.9	-1.6	9,297	-0.5	0.2	4,826	-1.0	0.7	24,515	3.5	4.2
SECTOR 81, Other services, except public adr	2,070	-0.9	-1.6	9,297	-0.5	0.2	4,826	-1.0	0.7	24,515	3.5	4.2
811 Repair & maintenance	693	0.8	0.1	2,807	-0.2	-0.4	431	1.4	-	33,092	4.2	3.3
812 Personal & laundry services	426	0.7	-0.6	2,202	0.9	0.1	1,572	4.3	0.8	18,272	-0.3	2.9
813 Membership associations & orgs	454	1.7	1.9	3,333	0.5	3.2	2,036	-2.7	4.0	23,303	3.8	5.2
814 Private households	497	-6.6	-6.7	954	-7.2	-6.1	787	-7.5	-5.3	17,922	6.0	6.2
Government Ownership	1,768	4.4	1.2	50,397	1.3	2.2	27,212	0.6	1.4	35,994	3.9	4.1
Federal Government Ownership /3	620	0.9	0.9	6,248	-	2.2	-	-	-	51,269	7.7	5.4
Service Providing - Federal Govt.	620	0.9	0.9	6,248	-	2.2	-	-	-	51,269	7.7	5.4
Trade, Transportation and Utilities	411	0.5	0.9	2,212	-2.6	-2.4	-	-	-	45,593	7.7	4.5

Table 1

Vermont UI Covered Employment by NAICS Based Industry Groups
annual average with percent change from 2003 and 1999, units, employment, women, average wage

NAICS Major Industry Group	Reporting			Employment						Average		
	2004	Units		2004	Total		2004	Women		2004	Wage	
		Pct change			Pct change			Pct change			Pct change	
		From 2003 %	Avg/1 99-04 %		From 2003 %	Avg/1 99-03 %		From 2003 %	Avg/1 99-04 %		From 2003 %	Avg/1 99-04 %
SECTORS 48-49, Transportation & Warehousir	411	0.5	0.9	2,212	-2.6	-2.4	-	-	-	45,593	7.7	4.5
484 Truck Transportation	1	-	-	4	95.9	-	-	-	-	67,925	-29.1	-
488 Support activities for transportation	1	-	-	61	-6.3	-7.3	-	-	-	91,485	4.1	6.8
491 Postal service	409	0.5	0.9	2,147	-2.6	-2.3	-	-	-	44,256	8.1	4.5
Financial Activities	5	-	-6.5	38	-2.6	-0.8	-	-	-	59,153	5.6	5.0
SECTOR 52, Finance and Insurance	5	-	-6.5	38	-2.6	-0.8	-	-	-	59,153	5.6	5.0
522 Credit intermediation and related activities	5	-	-6.5	38	-2.6	-0.8	-	-	-	59,153	5.6	5.0
Professional and Business Services	5	-28.6	-10.6	48	10.6	3.2	-	-	-	60,874	2.1	5.1
SECTOR 54, Prof., Scientific, and Technical Sv	5	-28.6	-10.6	48	10.6	3.2	-	-	-	60,874	2.1	5.1
541 Professional, scientific, and technical service	5	-28.6	-10.6	48	10.6	3.2	-	-	-	60,874	2.1	5.1
Education and Health Services	1	-	-	733	3.9	1.7	-	-	-	60,115	9.6	10.0
SECTOR 62, Health Care and Social Assistanc	1	-	-	733	3.9	1.7	-	-	-	60,115	9.6	10.0
622 Hospitals	1	-	-	733	3.9	1.7	-	-	-	60,115	9.6	10.0
Public Administration	198	2.9	1.6	3,217	0.8	6.5	-	-	-	52,920	6.8	4.4
SECTOR 92, Public Administration	198	2.9	1.6	3,217	0.8	6.5	-	-	-	52,920	6.8	4.4
921 Executive, legislative and general governme	9	-20.0	-9.7	98	-28.1	-17.1	-	-	-	54,775	-0.9	1.7
922 Justice, public order, and safety activities	54	12.5	14.4	1,082	5.5	46.0	-	-	-	60,152	14.5	0.7
923 Administration of human resource programs	4	-	1.3	63	-2.4	-1.1	-	-	-	55,854	5.7	3.6
924 Administration of environmental programs	36	-	3.0	355	-	4.1	-	-	-	45,703	8.1	3.7
925 Community and housing program administr	1	-	-	5	-	7.4	-	-	-	84,708	6.3	7.6
926 Administration of economic programs	79	8.6	2.4	242	-8.0	11.1	-	-	-	45,116	7.2	3.0
927 Space research and technology	-	-	-	-	-	-	-	-	-	-	-	-
928 National security and international affairs	15	-23.1	-15.1	1,374	2.2	-0.8	-	-	-	50,077	0.6	4.3
State government ownership	318	25.2	4.5	15,656	2.3	2.6	7,924	3.2	0.3	40,786	3.1	4.3
Goods Producing - State Govt.	22	37.5	6.6	615	7.8	3.2	63	-4.2	-5.1	41,980	3.5	5.2
Construction	22	37.5	6.6	615	7.8	3.2	63	-4.2	-5.1	41,980	3.5	5.2
SECTOR 23, Construction	22	37.5	6.6	615	7.8	3.2	63	-4.2	-5.1	41,980	3.5	5.2
237 Heavy and civil engineering construction	22	37.5	6.6	615	7.8	3.2	63	-4.2	-5.1	41,980	3.5	5.2
Service Providing - State Govt.	296	24.4	4.4	15,042	2.0	2.6	7,861	3.2	0.3	40,737	3.0	4.2
Information	4	-	-	34	-17.7	-2.9	24	-11.8	-2.1	42,430	0.6	5.3
SECTOR 51, Information	4	-	-	34	-17.7	-2.9	24	-11.8	-2.1	42,430	0.6	5.3
519 Other information Services	4	-	-	34	-17.7	-2.9	24	-11.8	-2.1	42,430	0.6	5.3
Financial Activities	1	-	-12.9	42	-1.8	0.5	29	-	0.2	45,160	6.8	3.4
SECTOR 52, Finance and Insurance	1	-	-12.9	42	-1.8	0.5	29	-	0.2	45,160	6.8	3.4
522 Credit intermediation and related activities	1	-	-	42	-1.8	1.0	29	-	0.3	45,160	6.8	3.7
523 Securities, commodity contracts, investment	-	-	-100.0	-	-	-100.0	-	-	-100.0	-	-	-100.0
Professional and Business Services	25	47.1	8.0	599	10.4	2.2	204	3.3	-0.2	42,139	-3.7	5.2
SECTOR 56, Administrative & waste services	25	47.1	8.0	599	10.4	2.2	204	3.3	-0.2	42,139	-3.7	5.2
561 Administrative and support services	25	47.1	8.0	599	10.4	2.2	204	3.3	-0.2	42,139	-3.7	5.2
Education and Health Services	69	1.5	-	7,514	5.6	3.8	4,307	5.7	-0.1	39,330	2.5	3.2
SECTOR 61, Educational Services	29	-	-1.3	5,782	3.2	3.4	3,279	5.8	-0.5	38,513	1.7	2.6
611 Educational services	29	-	-1.3	5,782	3.2	3.4	3,279	5.8	-0.5	38,513	1.7	2.6

Table 1

Vermont UI Covered Employment by NAICS Based Industry Groups

annual average with percent change from 2003 and 1999, units, employment, women, average wage

NAICS Major Industry Group	Reporting			Employment						Average		
	2004	Units		2004	Total		2004	Women		2004	Wage	
		Pct change			Pct change			Pct change			Pct change	
		From 2003 %	Avg/1 99-04 %		From 2003 %	Avg/1 99-03 %		From 2003 %	Avg/1 99-04 %		From 2003 %	Avg/1 99-04 %
SECTOR 62, Health Care and Social Assistance	40	2.6	1.0	1,732	14.6	5.0	1,027	5.3	1.2	42,058	4.8	5.1
622 Hospitals	1	-	-	228	-10.8	2.6	137	14.9	3.4	42,260	21.8	5.3
623 Nursing and residential care facilities	1	-	-	216	-13.2	-0.9	182	-2.7	-0.3	41,757	3.1	4.8
624 Social assistance	38	2.7	1.1	1,288	27.9	6.8	709	5.7	1.3	42,073	1.5	5.1
Public Administration	197	33.1	6.0	6,853	-2.1	1.5	3,298	0.3	0.9	42,123	4.3	5.2
SECTOR 92, Public Administration	197	33.1	6.0	6,853	-2.1	1.5	3,298	0.3	0.9	42,123	4.3	5.2
921 Executive, legislative and general government	22	69.2	11.1	541	-1.8	3.0	313	-5.4	0.3	41,519	11.8	4.9
922 Justice, public order, and safety activities	105	61.5	10.4	2,414	-1.9	1.1	832	-3.4	-1.0	42,029	2.3	5.1
923 Administration of human resource programs	21	-4.5	-0.9	1,694	6.0	2.9	1,264	12.3	3.2	42,456	2.1	5.3
924 Administration of environmental programs	27	3.8	0.8	742	2.2	1.1	233	-13.6	-3.7	41,844	-1.2	5.1
925 Community and housing program administration	3	-	-	221	-31.2	-4.6	126	-31.3	-5.4	38,814	2.4	4.4
926 Administration of economic programs	13	-	-	1,119	-9.1	1.2	472	3.1	4.2	42,974	12.7	5.4
928 National security and international affairs	6	-	-	123	9.2	3.0	58	0.4	0.7	41,929	0.3	4.9
Local government ownership	830	0.6	0.3	28,493	1.0	2.0	19,287	-0.4	1.9	30,011	3.2	3.4
Goods Producing - Local Govt.	31	3.3	1.3	583	3.2	1.5	53	-19.0	-2.3	33,290	-0.3	2.8
Construction	31	3.3	1.3	583	3.2	1.5	53	-19.0	-2.3	33,290	-0.3	2.8
SECTOR 23, Construction	31	3.3	1.3	583	3.2	1.5	53	-19.0	-2.3	33,290	-0.3	2.8
237 Heavy and civil engineering construction	31	3.3	1.3	583	3.2	1.5	53	-19.0	-2.3	33,290	-0.3	2.8
Service Providing - Local Govt.	799	0.5	0.3	27,910	1.0	2.0	19,234	-0.4	1.9	29,943	3.3	3.4
Trade, Transportation and Utilities	55	3.8	2.2	649	5.2	3.7	117	7.1	5.0	39,701	0.5	2.5
SECTORS 48-49, Transportation & Warehousing	5	-	-	231	17.8	8.5	55	18.9	11.3	31,067	-1.1	3.8
485 Transit and ground passenger transportation	3	-	-	196	20.9	9.7	50	24.2	10.6	29,346	-0.7	3.4
488 Support activities for transportation	2	-	-	36	3.4	3.2	5	-16.7	20.1	40,498	0.7	6.3
SECTOR 22, Utilities	50	4.2	2.5	418	-0.7	1.5	62	-1.6	0.9	44,473	2.8	2.8
221 Utilities	50	4.2	2.5	418	-0.7	1.5	62	-1.6	0.9	44,473	2.8	2.8
Information	12	-	1.8	119	-1.4	2.8	93	1.4	1.1	17,642	8.4	5.2
SECTOR 51, Information	12	-	1.8	119	-1.4	2.8	93	1.4	1.1	17,642	8.4	5.2
519 Other Information Services	12	-	1.8	119	-1.4	2.8	93	1.4	1.1	17,642	8.4	5.2
Professional and Business Services	12	-	0.9	37	-2.4	1.9	5	-13.0	-5.8	30,689	9.7	6.4
SECTOR 54, Prof., Scientific, & Technical Svcs	2	-	-	11	1.5	-0.9	3	-	-8.8	42,812	11.2	8.2
541 Professional and technical services	2	-	-	11	1.5	-0.9	3	-	-8.8	42,812	11.2	8.2
SECTOR 56, Administrative & Waste Services	10	-	1.0	26	-4.0	3.2	2	-27.3	-	25,593	7.6	6.0
561 Administrative and support services	10	-	1.0	26	-4.0	3.2	2	-27.3	-	25,593	7.6	6.0
Education and Health Services	278	0.5	-	20,865	1.0	1.9	16,357	-1.1	1.8	30,450	3.0	3.1
SECTOR 61, Educational Services	276	0.4	-	20,836	1.0	2.0	16,351	-1.1	1.8	30,444	3.0	3.1
611 Educational services	276	0.4	-	20,836	1.0	2.0	16,351	-1.1	1.8	30,444	3.0	3.1
SECTOR 62, Health Care and Social Assistance	3	25.0	4.6	29	-3.7	-3.8	6	-3.8	2.6	34,234	15.7	18.9
621 Ambulatory health care services	3	25.0	4.6	29	-3.7	-3.8	6	-3.8	2.6	34,234	15.7	18.9
Leisure and Hospitality	15	7.1	-	223	-0.6	-2.6	72	13.8	-4.0	22,026	5.1	8.1
SECTOR 71, Arts, Entertainment, and Recreation	15	7.1	-	223	-0.6	-2.6	72	13.8	-4.0	22,026	5.1	8.1
713 Amusements, gambling, and recreation	15	7.1	-	223	-0.6	-2.6	72	13.8	-4.0	22,026	5.1	8.1

Table 1

Vermont UI Covered Employment by NAICS Based Industry Groups
annual average with percent change from 2003 and 1999, units, employment, women, average wage

NAICS Major Industry Group	Reporting Units			Employment						Average Wage		
	2004	Pct change		2004	Pct change		2004	Pct change		2004	Pct change	
		From	Avg/1		From	Avg/1		From	Avg/1		From	Avg/1
		2003	99-04		2003	99-03		2003	99-04		2003	99-04
	%	%		%	%		%	%		%	%	
Other Services	5	5.3	10.8	13	16.5	10.5	2	200.0	-	30,286	4.2	3.2
SECTOR 81, Other Services, except Public Ad	5	5.3	10.8	13	16.5	10.5	2	200.0	-	30,286	4.2	3.2
811 Repair and maintenance	1	-	-	2	-19.4	0.8	-	-	-	53,672	31.7	4.8
812 Personal and laundry services	3	-	8.4	9	15.2	8.7	0	-	-	24,574	-3.9	4.0
813 Membership associations and organizations	1	33.3	-	2	140.1	-	2	166.7	-	31,162	24.4	-
Public Administration	422	-0.1	0.1	6,003	0.7	2.1	2,587	3.4	3.0	27,658	4.4	4.4
SECTOR 92, Public Administration	422	-0.1	0.1	6,003	0.7	2.1	2,587	3.4	3.0	27,658	4.4	4.4
921 Executive, legislative and general governme	283	-0.5	-0.1	3,159	0.4	1.1	1,319	5.8	1.8	23,435	2.3	4.0
922 Justice, public order, and safety activities	67	3.1	0.8	1,428	0.8	1.4	257	-0.3	0.8	35,868	5.5	5.2
923 Administration of human resource programs	28	-	0.7	1,004	2.2	6.9	835	1.2	5.9	28,291	6.6	3.6
924 Administration of environmental programs	22	-4.3	-	161	-1.5	0.2	58	1.3	-0.1	25,285	9.7	5.6
925 Community and housing program administr	21	-	-	249	1.1	4.4	120	3.0	4.6	33,119	4.6	3.7
926 Administration of economic programs	1	-	-	2	-11.1	8.5	-	-	-	27,427	20.1	18.6
SECTOR 61. Educational Svcs - total, private and	616	1.8	2.0	35,591	1.0	2.0	24,802	-0.3	1.4	32,502	4.0	3.3

Table 2

Vermont County and Town, 2004, total covered

annual average with percent change from 2003 and 1999, units, employment, women, average wage

Town	Reporting			Employment						Average		
	2004	Units		2004	Total		2004	Women		2004	Wage	
		Pct change			Pct change			Pct change			Pct change	
		From 2003 %	Avg/4 99-04 %		From 2003 %	Avg/4 99-04 %		From 2003 %	Avg/4 99-04 %		From 2003 %	Avg/4 99-04 %
Vermont	24,333	1.5	0.9	298,491	1.4	0.7	146,351	1.4	1.3	33,276	3.7	3.8
01. Addison	1,312	2.7	1.9	13,878	-0.2	1.1	7,029	1.5	1.3	31,827	4.1	4.1
Addison	33	-8.3	4.7	221	-0.2	4.8	91	-2.4	0.2	24,273	2.8	5.7
Bridport	34	0.7	2.2	178	-2.1	0.7	67	-3.6	-1.2	25,203	10.3	5.2
Bristol	134	12.8	2.6	1,321	10.2	3.7	756	12.0	5.7	25,318	1.8	3.6
Cornwall	35	13.1	16.6	121	12.3	6.6	56	6.2	3.3	35,864	-67.4	9.2
Ferrisburgh	78	6.5	2.9	432	12.6	5.2	156	5.8	3.1	26,498	4.2	5.0
Goshen	6	4.3	2.7	18	-3.2	-6.2	11	13.5	-7.2	14,855	-11.8	8.6
Granville	15	5.2	7.2	75	17.8	10.3	27	8.0	1.8	18,888	-2.6	0.1
Hancock	19	-6.3	-4.2	124	-28.7	-8.2	50	-32.1	-7.1	18,369	-3.5	-0.3
Leicester	22	-	7.3	77	10.7	6.3	25	20.2	-0.8	25,236	-3.4	7.1
Lincoln	29	6.4	12.1	113	-1.2	5.8	61	0.4	6.5	21,731	7.7	1.6
Middlebury	477	0.6	0.1	7,368	-2.4	0.8	3,937	-0.2	1.3	33,804	7.5	3.8
Monkton	24	-5.1	-0.4	127	5.1	6.1	73	16.9	10.1	23,100	4.8	4.1
New Haven	69	2.6	1.4	593	3.0	3.6	327	4.1	3.4	24,441	6.4	5.7
Orwell	35	-2.8	4.3	195	-23.1	-3.3	86	-7.8	1.6	24,082	-13.7	2.2
Panton	9	-2.7	-1.1	34	-11.4	-0.8	10	-15.2	-5.6	20,370	13.8	6.2
Ripton	19	17.2	8.9	57	16.0	12.7	32	6.6	16.5	19,328	4.6	0.8
Salisbury	34	0.7	-0.4	235	8.7	4.1	95	17.6	5.8	21,065	0.7	2.1
Shoreham	36	0.7	-0.8	189	2.5	-0.3	90	2.3	-	26,213	7.3	3.5
Starksboro	27	17.4	3.9	150	15.8	6.2	82	13.2	3.5	27,827	7.7	4.0
Vergennes	139	0.4	1.9	2,084	-0.6	-1.1	950	-0.1	-2.4	39,546	7.9	5.6
Waltham	7	-9.7	4.0	21	2.1	3.7	4	-15.0	1.2	23,581	1.5	13.7
Weybridge	19	4.2	6.9	102	0.6	-2.3	35	-7.2	-9.1	29,751	11.6	12.9
Whiting	13	17.8	-	43	18.8	-5.9	11	29.4	-9.1	29,265	-3.2	9.9
03. Bennington	1,583	1.1	-0.1	17,848	-0.7	-0.8	9,607	1.2	0.3	30,174	5.1	4.1
Arlington	103	-5.3	-2.0	838	0.3	-6.7	396	1.5	-7.3	32,308	0.1	2.6
Bennington	646	1.4	-	10,300	-0.8	-0.6	5,732	1.1	0.8	30,569	4.3	4.0
Dorset	113	7.1	1.4	704	-1.0	2.2	340	4.1	2.6	30,846	7.4	4.7
Landgrove	10	13.9	5.8	49	17.2	-1.3	17	10.0	0.3	29,039	-15.5	2.0
Manchester	456	-2.0	-	4,418	-2.1	0.1	2,532	1.8	1.5	29,487	6.8	5.1
Peru	22	6.1	0.5	232	-3.1	-0.6	85	-8.3	-2.9	19,925	4.6	4.6
Pownal	37	8.8	-3.3	223	1.9	-2.0	99	-6.8	-2.6	27,552	12.2	5.0
Readsboro	18	17.7	2.0	81	5.8	-	35	11.9	-1.0	23,097	7.2	5.7
Rupert	15	15.1	0.3	62	6.6	-0.8	26	7.1	0.2	22,855	4.2	4.8
Sandgate	n	n	n	n	n	n	n	n	n	n	n	n
Searsburg	n	n	n	n	n	n	n	n	n	n	n	n
Shaftsbury	59	2.6	-2.2	392	0.5	-6.4	134	-9.9	-10.4	33,604	11.9	3.4
Stamford	19	19.0	-0.3	89	6.0	-6.2	36	-4.7	-2.5	24,434	11.4	2.5
Sunderland	21	9.3	2.6	84	2.6	-1.4	40	5.3	-	34,515	-1.2	4.9
Winhall	52	-2.8	1.1	342	10.8	5.0	115	6.0	5.8	29,807	13.0	4.7
Woodford	8	11.1	0.7	27	33.2	1.1	18	37.3	2.8	22,154	-2.0	9.8
Glastenbury	-	-	-	-	-	-	-	-	-	-	-	-
05. Caledonia	1,042	2.1	0.4	11,542	1.5	0.9	5,769	0.7	1.2	27,514	4.7	4.0
Barnet	43	1.2	2.8	206	-7.9	0.6	95	-3.3	-0.4	25,225	5.0	1.7
Burke	46	-7.1	-5.0	318	-16.7	-4.0	161	-7.2	0.9	17,743	6.8	0.5
Danville	80	1.9	5.0	513	-3.8	3.8	265	2.0	2.9	24,474	5.7	3.3

Table 2

Vermont County and Town, 2004, total covered

annual average with percent change from 2003 and 1999, units, employment, women, average wage

Town	Reporting			Employment						Average		
	2004	Units		Total			Women			2004	Wage	
		Pct change		Pct change			Pct change				Pct change	
		From 2003 %	Avg/4 99-04 %	2004	From 2003 %	Avg/4 99-04 %	2004	From 2003 %	Avg/4 99-04 %		2004	From 2003 %
Groton	24	12.8	0.2	107	23.0	5.1	30	15.7	-1.9	30,983	7.2	4.2
Hardwick	114	0.4	2.0	866	5.6	2.0	455	1.6	2.0	24,890	12.8	5.8
Kirby	n	n	n	n	n	n	n	n	n	n	n	n
Lyndon	185	1.5	0.2	2,919	2.1	1.2	1,295	0.4	1.8	28,013	4.4	3.5
Newark	10	35.7	6.3	40	8.9	1.5	22	1.2	3.1	20,348	-11.3	5.3
Peacham	15	5.3	2.5	78	12.4	4.8	38	12.8	4.0	19,617	-6.9	3.3
Ryegate	21	5.1	-4.6	99	8.8	-13.5	29	22.3	-1.0	32,785	6.2	-0.1
St. Johnsbury	436	1.7	-0.2	5,929	2.2	0.6	3,202	1.0	1.0	28,690	3.4	4.5
Sheffield	7	12.5	-3.3	56	2.3	1.0	34	-6.8	-4.0	19,238	2.5	2.8
Stannard	n	n	n	n	n	n	n	n	n	n	n	n
Sutton	14	14.6	-5.8	132	-10.9	8.4	42	-12.9	0.1	28,582	5.8	5.1
Walden	6	20.0	3.7	44	13.5	2.7	23	6.9	-2.6	26,922	9.3	8.9
Waterford	30	-2.4	1.7	208	6.8	2.3	71	-4.4	0.6	24,938	4.8	5.5
Wheelock	8	34.8	9.2	21	19.4	8.4	7	11.5	1.4	14,338	-4.6	10.0
07. Chittenden	5,677	0.8	0.6	94,881	1.4	0.8	44,085	0.9	1.2	38,433	2.7	3.2
Bolton	17	22.2	-1.4	161	-2.1	8.0	58	-7.6	7.8	19,959	5.8	2.2
Buel's Gore	-	-	-	-	-	-	-	-	-	-	-	-
Burlington	1,475	-1.4	-1.1	32,579	2.4	1.7	17,467	1.5	1.4	38,699	2.5	3.2
Charlotte	106	1.7	1.5	495	-4.8	-1.6	251	-4.2	-2.8	35,270	5.2	3.9
Colchester	517	2.6	0.5	8,569	-1.9	1.2	3,821	-4.8	1.5	36,939	4.8	4.5
Essex	636	0.3	0.8	12,751	-3.9	-3.3	4,677	-4.1	-2.1	51,491	2.1	3.3
Hinesburg	115	7.7	3.1	1,080	15.2	4.4	532	7.9	3.7	31,830	6.8	5.7
Huntington	31	-8.2	-1.1	147	-16.8	-2.7	66	-22.7	0.9	33,650	12.9	5.9
Jericho	107	-0.2	-0.5	702	-2.4	0.3	346	-1.1	2.7	29,279	2.4	2.7
Milton	212	1.0	2.6	2,461	1.5	3.1	920	-6.3	2.1	36,408	2.5	4.5
Richmond	140	1.8	3.0	1,106	1.2	3.2	564	5.1	2.9	29,985	1.7	6.1
St. George	11	21.6	10.0	55	13.1	6.5	18	-7.8	11.1	22,579	14.2	-13.0
Shelburne	313	0.7	-0.8	3,271	5.3	0.2	1,778	7.5	1.9	29,223	4.5	3.4
South Burlington	1,043	1.1	2.1	17,653	3.2	1.0	7,992	4.6	1.6	35,570	3.6	3.5
Underhill	68	4.2	0.7	340	6.8	3.8	110	5.8	1.3	40,793	2.5	11.0
Westford	29	-2.5	-0.3	231	3.3	6.2	113	10.0	7.1	23,870	0.9	0.8
Williston	684	2.9	2.3	10,650	3.7	2.4	4,075	2.4	2.5	35,498	2.3	2.1
Winooski	175	-0.8	-1.5	2,628	1.4	-0.3	1,299	-2.4	0.3	33,129	6.1	5.3
09. Essex	170	-1.5	-0.5	1,502	5.9	-3.4	651	7.1	-1.1	27,824	9.1	2.3
Averill	n	n	n	n	n	n	n	n	n	n	n	n
Avery's Gore	-	-	-	-	-	-	-	-	-	-	-	-
Bloomfield	n	n	n	n	n	n	n	n	n	n	n	n
Brighton	46	-1.6	-1.9	280	4.5	-3.5	154	7.3	-2.2	21,290	2.0	3.3
Brunswick	-	-	-	-	-	-	-	-	-	-	-	-
Canaan	36	-4.0	2.5	673	-4.2	-4.5	233	-5.9	-2.2	30,056	10.0	2.5
Concord	25	-2.0	1.5	190	-0.2	4.0	101	-0.7	1.3	24,943	11.8	6.6
East Haven	4	-20.0	-	23	-8.6	3.6	20	-10.1	6.3	12,859	-10.7	1.0
Ferdinand	n	n	n	n	n	n	n	n	n	n	n	n
Granby	6	-	-2.3	22	22.3	0.4	10	31.0	10.6	35,870	4.0	3.1
Guildhall	8	-20.0	-3.4	34	8.9	1.2	19	13.2	1.9	22,823	-0.5	13.6
Lemington	n	n	n	n	n	n	n	n	n	n	n	n
Lewis	-	-	-	-	-	-	-	-	-	-	-	-

Table 2

Vermont County and Town, 2004, total covered

annual average with percent change from 2003 and 1999, units, employment, women, average wage

Town	Reporting			Employment						Average		
	2004	Units		2004	Total		2004	Women		2004	Wage	
		Pct change			Pct change			Pct change			Pct change	
		From 2003 %	Avg/4 99-04 %		From 2003 %	Avg/4 99-04 %		From 2003 %	Avg/4 99-04 %		From 2003 %	Avg/4 99-04 %
Lunenburg	21	3.8	-2.7	154	40.3	-11.7	62	11.7	-8.7	28,542	17.7	-2.5
Maidstone	n	n	n	n	n	n	n	n	n	n	n	n
Norton	16	10.3	1.6	61	3.0	0.3	12	63.3	-4.9	40,976	-3.4	6.0
Victory	n	n	n	n	n	n	n	n	n	n	n	n
Warner's Grant	-	-	-	-	-	-	-	-	-	-	-	-
Warren Gore	-	-	-	-	-	-	-	-	-	-	-	-
11. Franklin	1,211	2.1	1.3	15,529	1.2	1.6	7,638	0.6	1.1	31,442	4.5	4.7
Bakersfield	13	-14.5	-2.8	88	1.7	-3.3	61	-0.4	-2.9	18,144	-2.0	2.9
Berkshire	10	-11.1	-9.5	85	3.1	0.5	48	-4.0	-2.1	20,276	1.8	2.5
Enosburg	104	5.3	0.9	1,100	-1.1	3.0	496	-10.9	-0.4	25,578	9.5	4.1
Fairfax	88	0.9	4.9	643	-0.4	4.3	311	1.9	3.4	29,219	1.4	5.7
Fairfield	38	22.6	4.7	174	9.7	5.0	87	1.5	3.5	22,847	-1.0	0.6
Fletcher	9	12.5	-2.1	51	13.1	2.4	36	11.6	2.5	18,922	-4.3	2.9
Franklin	23	-7.1	2.1	143	-9.2	1.2	72	-16.1	0.4	20,859	11.7	5.7
Georgia	62	11.8	0.7	760	19.6	-0.4	343	41.4	3.1	34,887	0.3	4.8
Highgate	51	3.6	1.1	681	1.3	7.2	368	-0.2	11.0	32,344	4.4	4.1
Montgomery	34	-	0.9	165	2.7	1.0	98	6.8	2.8	19,569	6.8	3.2
Richford	45	-1.1	-2.0	666	-2.8	2.2	333	-2.3	3.5	28,925	7.2	4.0
St. Albans City	410	-4.6	-1.1	7,566	-1.8	1.5	3,770	-2.7	0.1	33,619	4.4	5.1
St. Albans Town	125	19.4	12.7	1,431	8.6	2.8	775	9.3	2.4	29,788	2.7	4.4
Sheldon	34	11.4	-0.6	368	5.7	0.2	120	5.0	-	36,903	3.5	4.0
Swanton	168	2.9	2.1	1,609	4.3	-1.3	722	7.0	-0.2	30,152	6.1	4.1
13. Grand Isle	220	11.0	3.3	1,164	10.7	4.3	595	12.2	3.4	24,299	8.5	4.7
Alburg	53	19.9	3.9	282	26.0	7.0	151	19.6	5.0	26,121	29.6	9.3
Grand Isle	49	16.9	3.7	271	9.4	4.8	118	10.5	6.1	27,747	3.0	3.4
Isle La Motte	18	-6.5	0.3	60	19.0	4.1	38	29.3	8.9	17,293	-6.6	0.4
North Hero	36	8.3	5.6	230	2.3	2.6	107	5.4	-1.6	23,714	6.2	3.8
South Hero	65	7.5	2.3	322	5.5	2.9	182	8.8	2.8	21,523	2.2	3.5
15. Lamoille	1,055	3.5	0.7	10,633	0.7	0.5	5,819	1.0	1.5	27,003	6.2	5.3
Belvidere	n	n	n	n	n	n	n	n	n	n	n	n
Cambridge	123	-0.6	1.0	1,264	-1.9	-0.5	784	-5.1	5.3	23,052	6.6	4.3
Eden	15	1.7	4.1	86	6.8	2.6	64	11.8	5.5	19,066	-2.6	3.6
Elmore	10	15.2	-6.1	25	4.2	-3.1	13	-10.2	-4.3	16,407	-7.3	7.6
Hyde Park	85	5.0	4.2	745	6.0	5.0	374	8.4	3.8	30,277	6.8	4.9
Johnson	84	3.4	-0.2	874	-	-1.5	487	4.6	1.8	29,234	6.6	5.7
Morristown	312	6.6	1.0	3,589	1.8	0.5	2,048	1.4	0.6	29,137	5.4	5.9
Stowe	373	2.1	0.3	3,796	-0.4	0.6	1,944	0.9	0.7	25,552	6.7	4.9
Waterville	17	21.4	2.5	46	12.0	0.9	23	5.9	-1.1	26,946	3.6	5.8
Wolcott	35	2.2	-2.9	198	-0.5	1.0	77	-1.6	-1.0	24,012	4.5	6.3
17. Orange	860	0.4	1.8	7,847	-1.7	0.9	4,018	-2.1	0.9	27,513	3.9	4.0
Bradford	124	0.6	1.1	1,465	1.8	0.7	748	1.4	-1.3	26,563	1.4	3.7
Braintree	22	10.0	13.4	108	5.2	5.0	43	3.0	0.1	23,075	-0.2	6.5
Brookfield	27	2.9	3.9	119	-6.6	-0.2	51	-19.2	1.7	28,412	1.0	0.5
Chelsea	52	7.3	0.9	354	4.3	1.2	196	10.7	3.2	23,373	-1.3	1.0
Corinth	27	0.9	1.7	173	8.2	2.6	113	3.0	3.2	25,432	15.3	4.3
Fairlee	67	-1.1	3.5	566	-8.3	1.4	248	-13.5	1.2	26,006	4.5	7.4
Newbury	61	-2.8	-0.9	604	-4.0	-	347	-6.0	-1.0	24,534	7.5	4.6

Table 2

Vermont County and Town, 2004, total covered

annual average with percent change from 2003 and 1999, units, employment, women, average wage

Town	Reporting			Employment						Average		
	2004	Units		2004	Total		2004	Women		2004	Wage	
		Pct change			Pct change			Pct change			Pct change	
		From 2003 %	Avg/4 99-04 %		From 2003 %	Avg/4 99-04 %		From 2003 %	Avg/4 99-04 %		From 2003 %	Avg/4 99-04 %
Orange	11	-8.5	-1.8	56	18.7	1.9	33	8.1	1.4	18,227	-8.3	1.0
Randolph	189	-1.4	1.8	2,578	-6.6	-0.8	1,433	-4.7	0.4	29,759	3.3	3.8
Strafford	40	5.3	5.7	156	12.3	5.4	76	-3.8	1.3	27,934	21.0	7.9
Thetford	87	3.0	0.9	676	7.3	3.5	296	11.4	7.2	30,404	5.1	4.7
Topsham	20	8.3	5.7	68	-3.1	5.8	19	-1.3	4.8	24,414	16.6	3.8
Tunbridge	27	-17.2	-3.1	184	-4.5	1.5	92	-7.1	0.4	25,141	7.9	4.6
Vershire	19	-14.8	-2.2	103	-0.4	2.2	45	-2.7	0.1	21,712	7.3	2.6
Washington	20	15.9	8.6	98	11.2	6.7	45	18.3	0.4	23,952	7.8	4.6
West Fairlee	8	6.7	-	14	-56.6	-17.6	4	-71.9	-28.1	20,558	33.9	3.5
Williamstown	60	3.0	2.0	525	3.7	3.6	229	2.7	5.9	28,744	3.3	3.5
19. Orleans	939	1.3	1.6	9,850	2.8	2.1	5,149	2.3	2.5	26,637	2.0	3.9
Albany	15	-	-1.9	47	-13.0	-5.9	30	13.1	-2.3	23,697	5.4	1.4
Barton	119	-1.4	-	1,391	-3.0	-2.8	717	-1.4	-0.7	24,448	6.8	3.2
Brownington	11	-	4.7	39	19.7	9.2	29	51.9	12.8	18,791	4.4	5.1
Charleston	16	14.3	7.3	85	-9.0	1.2	37	-16.1	-2.7	22,378	10.8	7.6
Coventry	17	-2.9	-3.7	102	1.3	-5.0	46	3.9	2.2	22,376	1.1	-0.3
Craftsbury	37	10.5	3.8	251	1.6	2.7	144	-5.9	1.3	22,690	10.3	4.4
Derby	166	2.5	1.6	1,711	4.4	1.0	660	-	-1.7	31,843	7.7	6.0
Glover	23	-4.2	13.9	168	3.8	9.7	98	-4.1	3.8	20,579	5.6	5.8
Greensboro	40	1.9	1.2	292	15.5	2.9	184	12.1	1.9	20,952	0.6	3.9
Holland	7	-10.0	11.0	45	-2.4	16.0	23	1.1	9.5	18,630	15.2	1.8
Irasburg	32	1.6	3.1	188	3.1	4.6	64	13.3	4.1	26,244	2.9	3.9
Jay	18	12.3	5.4	296	16.3	8.1	145	16.7	8.5	19,875	9.3	4.0
Lowell	12	25.6	8.9	55	-2.2	2.5	36	-8.3	-1.0	18,345	25.6	11.9
Morgan	16	16.1	5.0	56	7.0	3.8	29	-	1.4	27,506	22.0	12.6
Newport City	294	0.2	0.9	4,396	3.4	3.4	2,548	4.3	4.0	27,508	-3.8	3.4
Newport Town	56	4.2	3.8	366	1.4	10.0	194	-5.5	13.8	23,925	13.3	3.0
Troy	42	-5.1	-3.5	272	2.5	1.5	120	1.1	0.3	25,613	4.1	3.0
Westfield	13	-10.3	3.4	53	-4.2	-0.7	31	-12.1	0.5	22,124	16.8	4.1
Westmore	5	-	4.6	36	-2.5	6.1	16	-20.5	19.0	14,773	-10.4	-2.9
21. Rutland	2,473	1.0	0.5	29,318	2.7	0.5	14,131	2.4	1.0	31,445	4.6	4.5
Benson	15	10.9	2.9	133	8.9	5.8	82	1.5	11.1	20,544	3.4	0.2
Brandon	124	2.5	-1.3	1,499	-0.2	-1.1	783	-0.6	-0.5	27,020	4.5	4.0
Castleton	126	-1.8	2.2	1,364	9.4	5.0	662	20.6	5.3	28,053	3.1	5.3
Chittenden	26	-9.5	-1.1	157	4.6	1.3	76	-8.4	1.6	24,716	15.9	7.1
Clarendon	93	12.5	4.3	1,306	22.6	5.6	655	25.3	8.2	27,627	-13.7	0.6
Danby	38	-1.9	0.1	250	4.7	1.1	94	6.6	0.9	31,746	12.3	4.1
Fair Haven	102	2.8	2.6	986	1.2	1.0	476	2.4	1.1	23,760	2.0	2.7
Hubbardton	7	-	4.0	19	18.1	2.8	8	-	5.7	12,233	-11.4	0.2
Ira	n	n	n	n	n	n	n	n	n	n	n	n
Mendon	47	-3.6	-0.5	376	6.6	1.1	163	13.0	-2.7	24,561	0.9	6.6
Middletown Springs	27	11.3	6.5	105	22.5	15.8	53	34.6	11.1	25,256	11.2	1.9
Mount Holly	34	3.0	4.3	171	-2.0	1.5	64	-11.8	2.5	26,995	5.7	2.5
Mount Tabor	n	n	n	n	n	n	n	n	n	n	n	n
Pawlet	52	2.5	3.1	280	-9.8	-2.3	121	-12.5	-1.8	24,556	0.5	2.9
Pittsfield	23	-3.2	0.9	132	-4.8	-1.5	46	-8.9	-3.4	29,581	-8.9	4.9

Table 2

Vermont County and Town, 2004, total covered

annual average with percent change from 2003 and 1999, units, employment, women, average wage

Town	Reporting			Employment						Average		
	2004	Units		2004	Total		2004	Women		2004	Wage	
		Pct change			Pct change			Pct change			Pct change	
		From 2003 %	Avg/4 99-04 %		From 2003 %	Avg/4 99-04 %		From 2003 %	Avg/4 99-04 %		From 2003 %	Avg/4 99-04 %
Pittsford	87	2.1	-1.3	826	3.9	-4.0	210	3.7	-4.4	35,998	5.4	4.3
Poultney	105	1.0	-	971	0.4	-0.9	415	-1.8	-1.0	27,123	4.5	3.2
Proctor	32	-6.0	0.2	386	4.0	4.7	180	5.1	6.8	44,111	2.4	5.8
Rutland City	986	-0.1	-0.3	13,400	2.6	1.0	7,248	2.3	1.4	34,121	5.6	4.9
Rutland Town	166	4.1	1.2	3,676	1.6	-0.7	1,328	-3.4	-1.2	36,303	7.4	4.8
Killington	157	-2.6	0.6	1,869	-4.3	-3.7	908	-1.9	-2.3	22,726	4.2	4.0
Shrewsbury	32	10.3	2.7	240	9.6	7.9	92	3.1	6.8	26,358	7.3	4.0
Sudbury	7	27.3	-4.4	40	1.9	3.9	14	-18.2	-1.4	28,780	4.1	-0.8
Tinmouth	9	2.9	22.6	31	-7.1	10.0	19	-15.9	3.3	14,991	-13.6	-
Wallingford	69	-2.1	-1.1	404	1.1	-0.5	161	-1.4	0.6	24,872	-0.5	3.4
Wells	28	9.7	0.2	146	33.0	4.2	53	-	2.5	20,440	0.8	2.3
West Rutland	71	2.5	2.2	514	-9.2	-4.0	215	-6.2	-3.1	26,550	5.6	4.8
West Haven	6	14.3	8.4	10	0.8	1.4	2	-40.0	-2.1	13,248	11.9	1.6
23. Washington	2,526	1.8	0.7	32,294	1.2	0.7	16,035	0.6	0.8	33,331	4.5	4.4
Barre City	442	2.1	-0.3	4,828	1.5	-	2,296	3.0	-	30,199	4.3	4.0
Barre Town	161	5.9	0.7	1,835	-2.4	-5.7	628	-7.1	-2.5	33,338	11.5	3.1
Berlin	216	0.5	-	5,102	1.4	1.6	3,038	-0.1	0.9	31,957	4.4	5.4
Cabot	28	2.8	5.8	573	10.0	6.8	209	4.0	2.1	31,210	2.4	2.5
Calais	29	-7.3	-3.5	101	12.0	-0.4	41	-	3.6	33,052	12.2	7.3
Duxbury	13	1.9	-1.1	197	9.3	4.8	112	2.3	3.4	34,729	2.3	3.0
East Montpelier	61	2.1	0.2	688	1.3	3.7	277	4.6	2.0	31,110	3.1	3.9
Fayston	32	0.8	3.3	201	-6.8	5.1	94	-2.6	7.4	24,377	15.1	3.6
Marshfield	29	9.6	4.4	213	10.1	25.8	124	-5.2	34.1	25,992	15.7	11.0
Middlesex	36	18.9	2.8	278	18.9	3.8	67	3.9	-3.3	39,649	13.0	9.2
Montpelier	625	1.9	0.1	8,905	-4.2	-0.2	4,781	-1.7	0.8	37,618	3.4	4.6
Moretown	49	-1.5	1.3	401	7.1	8.4	137	11.8	8.6	36,817	5.0	6.4
Northfield	130	-1.5	-0.3	1,812	-0.5	1.4	977	-1.1	0.7	29,727	6.5	5.3
Plainfield	49	6.0	1.7	424	9.4	-4.2	195	3.3	-9.4	25,373	-0.8	1.0
Roxbury	16	-5.9	5.1	86	-1.4	9.7	37	-5.7	8.5	22,095	13.2	1.5
Waitsfield	205	-2.4	1.7	1,366	5.7	2.2	650	5.9	1.8	28,990	1.5	3.9
Warren	101	1.3	1.3	867	1.7	0.7	447	6.2	2.2	20,157	3.1	0.9
Waterbury	278	4.8	2.5	4,267	10.3	2.7	1,858	4.5	1.0	37,076	4.8	4.9
Woodbury	8	-23.1	-7.4	48	-27.2	-6.3	29	-8.7	0.5	21,268	-0.4	3.0
Worcester	20	-2.5	5.7	102	3.0	3.8	40	0.6	0.9	28,013	1.1	2.0
25. Windham	1,928	0.7	0.4	22,978	0.4	-1.0	11,394	1.4	0.3	32,919	3.2	4.2
Athens	n	n	n	n	n	n	n	n	n	n	n	n
Brattleboro	752	0.7	-	11,294	0.9	-2.0	5,641	2.2	-1.0	34,335	-3.2	3.2
Brookline	11	7.5	2.0	69	15.5	6.4	44	20.0	11.3	14,511	23.3	2.5
Dover	108	3.9	1.1	1,165	-4.9	-1.8	609	0.7	-0.2	20,759	2.3	3.7
Dummerston	39	-1.9	-2.4	258	1.7	-1.6	109	6.1	4.3	32,227	2.0	4.5
Grafton	22	-	1.7	176	-9.5	-2.0	76	-7.9	-3.9	29,353	1.7	3.2
Guilford	47	0.5	4.1	196	8.6	1.4	84	8.8	1.7	30,860	6.1	7.4
Halifax	12	20.0	0.4	68	19.0	6.8	37	-0.7	6.5	16,666	-3.6	1.4
Jamaica	37	8.1	4.9	191	13.6	9.9	86	18.2	14.1	23,147	4.2	3.0

Table 2

Vermont County and Town, 2004, total covered

annual average with percent change from 2003 and 1999, units, employment, women, average wage

Town	Reporting			Employment						Average			
	2004	Units		Total			Women			2004	Wage		
		Pct change		2004	Pct change		2004	Pct change			2004	Pct change	
		From 2003	Avg/4 99-04		From 2003	Avg/4 99-04		From 2003	Avg/4 99-04			From 2003	Avg/4 99-04
	%	%		%	%		%	%		%	%		
Londonderry	102	1.5	1.1	573	6.6	-0.9	278	13.0	0.9	25,709	0.6	4.7	
Marlboro	33	1.5	0.6	284	-3.0	-4.7	171	-3.9	-3.6	26,259	0.2	8.4	
Newfane	52	-2.3	1.8	375	4.3	5.3	196	4.0	6.3	24,812	1.2	4.9	
Putney	109	0.5	0.7	1,189	-0.5	0.5	600	-2.1	0.2	28,874	2.0	4.4	
Rockingham	194	-2.8	-0.4	2,534	3.7	0.4	1,340	0.4	1.1	30,925	12.4	5.1	
Somerset	-	-	-	-	-	-	-	-	-	-	-	-	
Stratton	n	n	n	n	n	n	n	n	n	n	n	n	
Townshend	51	3.6	1.4	622	4.2	0.1	395	7.6	0.9	39,325	13.0	9.6	
Vernon	51	17.2	2.8	1,046	6.9	-0.6	292	9.6	4.5	70,212	21.3	7.7	
Wardsboro	24	1.1	-1.6	104	-35.6	-4.5	53	-38.1	13.7	25,784	28.0	7.8	
Westminster	68	-5.2	4.1	645	-10.5	-2.5	278	-4.6	1.6	29,738	5.5	4.4	
Whitingham	36	-8.8	-0.4	271	-4.6	3.0	149	-0.2	7.9	24,649	5.4	1.6	
Wilmington	148	-2.0	-1.3	1,028	0.4	1.6	564	5.1	3.7	23,711	9.8	4.3	
Windham	8	34.8	6.2	30	-7.4	2.7	14	-6.6	13.7	24,892	28.7	5.9	
27. Windsor	2,405	0.2	0.4	23,610	1.5	0.1	11,210	1.0	1.2	31,445	4.5	4.0	
Andover	13	-5.6	1.6	44	1.3	2.6	14	-3.4	9.9	24,833	-4.6	-4.6	
Baltimore	n	n	n	n	n	n	n	n	n	n	n	n	
Barnard	31	-	-0.5	157	0.6	-0.5	75	-4.8	-0.1	27,030	-4.5	3.3	
Bethel	87	1.8	-0.3	1,031	9.5	1.1	413	5.3	-	32,445	5.5	2.0	
Bridgewater	50	-3.4	-0.3	309	4.5	-4.3	144	9.8	-2.2	25,504	-1.4	3.0	
Cavendish	45	2.8	5.9	507	9.5	-0.6	209	5.0	-3.1	28,792	5.6	4.4	
Chester	130	-1.5	0.4	968	-4.2	-1.9	503	-5.2	-2.5	28,232	2.6	5.5	
Hartford	461	2.2	1.1	5,990	2.2	1.2	2,244	1.4	2.5	37,343	5.8	5.3	
Hartland	76	6.3	6.3	423	-2.7	3.4	202	-2.4	3.4	30,519	1.6	3.1	
Ludlow	177	3.4	0.7	1,886	1.2	0.4	889	1.4	1.7	25,934	10.0	5.0	
Norwich	135	2.3	-	846	-0.3	0.5	423	-3.7	-1.6	31,458	7.6	3.2	
Plymouth	23	-5.2	0.7	223	30.8	4.9	92	7.6	9.5	21,650	-11.7	-2.9	
Pomfret	35	-	2.7	177	-7.0	2.3	111	-0.2	6.8	26,367	6.7	3.7	
Reading	24	16.0	-2.4	93	12.1	3.4	54	17.6	6.5	20,659	4.6	6.1	
Rochester	62	-3.5	-0.3	386	-4.9	-0.4	214	-5.2	-1.0	26,683	1.8	2.2	
Royalton	93	5.7	0.1	957	5.5	2.9	472	10.3	4.7	33,991	2.1	2.6	
Sharon	37	2.8	-0.4	207	-12.7	0.7	88	-7.1	4.5	26,822	3.5	3.9	
Springfield	322	-5.6	-0.8	4,435	1.1	-2.0	2,397	0.8	-	31,506	3.9	2.7	
Stockbridge	21	10.8	0.2	108	2.7	-1.0	47	5.6	1.2	29,029	10.8	-0.4	
Weathersfield	76	5.6	2.7	423	4.7	3.4	179	8.1	8.8	27,767	-3.1	2.8	
Weston	38	-4.4	-2.6	205	-13.0	-0.4	129	-10.3	0.8	20,008	6.7	3.1	
West Windsor	36	-11.1	1.1	248	-17.3	-4.9	112	-11.8	-3.0	20,934	-15.6	-1.5	
Windsor	141	0.7	1.3	1,597	2.5	0.2	955	2.1	2.5	30,517	3.1	5.0	
Woodstock	295	-1.2	-0.8	2,385	1.1	0.7	1,246	1.0	1.2	28,977	3.8	4.8	
99. Other /1	936	6.9	7.3	5,616	13.6	13.4	3,223	17.8	24.3	29,787	1.9	-	
Other /1	936	6.9	7.3	5,616	13.6	13.4	3,223	17.8	24.3	29,787	1.9	-	

/Location of business is statewide, countywide.

/2 Avg is compounded annual average percent change.

/4 Avg is compounded annual average percent change.

n = Data is confidential.

"- " = There is no data to report.

Note: Changes may be influenced by reclassification of specific firms and or improved multiple worksite information.

Table 3

Vermont County and Industry Sectors, 2004 total covered

annual average with percent change from 2003 and 1999, units, employment, women, average wage

NAICS Major Industry Group	Reporting			Employment						Average Wage		
	2004	Units		2004	Total		2004	Women		2004	Wage	
		Pct change			Pct change			Pct change			Pct change	
		From 2003 %	Avg/2 99-04 %		From 2003 %	Avg/2 99-04 %		From 2003 %	Avg/2 99-04 %		From 2003 %	Avg/2 99-04 %
Vermont - Total Covered	24,333	1.5	0.9	298,491	1.4	0.7	146,351	1.4	1.3	33,276	3.7	3.8
Private Ownership	22,566	1.3	0.9	248,094	1.5	0.4	119,140	1.6	1.3	32,724	3.7	3.7
Goods Producing - Private	4,669	2.4	1.8	56,714	1.6	-2.2	13,493	-0.8	-2.9	41,238	2.2	3.4
Natural Resources and Mining	429	1.8	3.1	3,063	3.9	0.4	763	6.3	-0.9	26,701	-0.4	2.1
SECTOR 11, Agriculture, forestry, fishing & hunting	366	3.4	3.8	2,301	5.8	1.7	673	6.4	-0.7	22,361	3.2	3.3
SECTOR 21, Mining	64	-6.3	-0.1	762	-1.3	-3.2	91	5.5	-2.1	39,807	-3.6	2.1
Construction	3,032	4.1	3.2	16,674	8.4	2.9	1,813	2.7	3.0	34,779	4.2	3.4
SECTOR 23, Construction	3,032	4.1	3.2	16,674	8.4	2.9	1,813	2.7	3.0	34,779	4.2	3.4
Manufacturing	1,208	-1.4	-1.6	36,978	-1.4	-4.2	10,916	-1.9	-3.8	45,354	2.5	3.9
Durable Goods	789	-1.7	-1.0	26,418	-1.2	-4.2	7,187	-1.3	-3.3	48,966	2.5	4.2
Non-Durable Goods	419	-0.9	-2.7	10,560	-1.7	-4.1	3,730	-3.0	-4.7	36,319	2.2	3.2
Service Providing - Private	17,897	1.0	0.7	191,380	1.4	1.3	105,647	2.0	1.9	30,200	4.2	4.2
Trade, Transportation, and Utilities	5,609	0.2	-0.4	58,714	1.1	0.7	24,700	2.8	1.0	29,737	3.7	4.2
SECTOR 42, Wholesale trade	1,336	1.7	1.7	10,198	-0.6	1.0	2,784	-1.4	0.3	44,675	1.0	4.3
SECTOR 44-45, Retail trade	3,669	-	-1.0	40,042	1.3	0.7	19,638	3.2	1.0	23,439	4.7	4.3
SECTOR 48-49, Transportation & warehousing	555	-1.2	-1.2	6,759	2.8	0.1	1,878	5.4	2.6	32,098	1.5	2.7
SECTOR 22, Utilities	50	-5.3	-0.8	1,714	-0.7	-0.5	400	1.2	0.1	78,676	14.5	6.2
Information	515	1.1	2.6	6,363	-2.0	-0.9	3,203	-1.6	-0.9	38,874	4.4	4.5
Sector 51, Information	515	1.1	2.6	6,363	-2.0	-0.9	3,203	-1.6	-0.9	38,874	4.4	4.5
Financial Activities	1,691	2.3	1.0	13,005	0.1	-	8,228	0.8	0.4	46,154	3.7	5.5
SECTOR 52, Finance and Insurance	950	1.0	0.8	9,751	-1.4	-0.5	6,738	-0.6	-0.1	51,827	4.0	5.8
SECTOR 53, Real estate & rental & leasing	741	3.9	1.4	3,254	4.9	1.7	1,491	8.0	2.7	29,150	5.9	4.8
Professional and Business Services	3,635	2.5	2.7	21,272	4.3	0.8	9,424	4.2	0.6	40,197	5.0	5.1
SECTOR 54, Professional, scientific, & technical svcs.	2,502	3.2	2.9	12,591	2.9	1.5	6,259	3.1	2.3	48,994	3.7	4.2
SECTOR 55, Mgt. of companies & enterprises	23	13.4	-5.7	307	8.7	0.8	139	8.2	-0.4	57,884	-2.7	5.7
SECTOR 56, Administrative & waste services	1,109	0.8	2.4	8,375	6.3	-0.3	3,027	6.4	-2.3	26,324	11.4	6.6
Education & Health Services	2,155	1.3	1.9	49,688	2.0	3.8	37,448	2.3	4.0	31,705	4.1	3.2
SECTOR 61, Educational services	311	3.3	4.5	8,973	-0.4	1.4	5,172	-1.3	1.3	33,409	7.6	4.2
SECTOR 62, Health care & social assistance	1,843	0.9	1.5	40,715	2.6	4.4	32,276	2.9	4.5	31,329	3.3	3.0
Leisure and Hospitality	2,223	1.1	0.9	33,043	1.0	0.3	17,819	1.1	1.4	15,976	4.9	3.8
SECTOR 71, Arts, entertainment, & recreation	390	4.5	2.5	3,718	0.7	3.6	1,843	-0.2	4.4	18,414	12.3	3.2
SECTOR 72, Accommodation & food services	1,833	0.4	0.6	29,325	1.0	-0.1	15,976	1.2	1.1	15,667	3.9	3.8
Other Services	2,070	-0.9	-1.6	9,297	-0.5	0.2	4,826	-1.0	0.7	24,515	3.5	4.2
SECTOR 81, Other services, except public admin.	2,070	-0.9	-1.6	9,297	-0.5	0.2	4,826	-1.0	0.7	24,515	3.5	4.2
Government Ownership	1,768	4.4	1.2	50,397	1.3	2.2	27,212	0.6	1.4	35,994	3.9	4.1
Federal Government /1	620	0.9	0.9	6,248	-	2.2	-	-	-	51,269	7.7	5.4
491 Postal service	409	0.5	0.9	2,147	-2.6	-2.3	-	-	-	44,256	8.1	4.5
Other Federal Government	211	1.7	1.1	4,101	1.4	5.2	-	-	-	54,941	7.2	5.4
State Government	318	25.2	4.5	15,656	2.3	2.6	7,924	3.2	0.3	40,786	3.1	4.3
SECTOR 61, Educational Services	29	-	-1.3	5,782	3.2	3.4	3,279	5.8	-0.5	38,513	1.7	2.6
Other State Government	289	28.4	5.2	9,874	1.7	2.2	4,645	1.4	0.8	42,118	3.9	5.2
Local Government	830	0.6	0.3	28,493	1.0	2.0	19,287	-0.4	1.9	30,011	3.2	3.4
SECTOR 61, Educational Services	276	0.4	-	20,836	1.0	2.0	16,351	-1.1	1.8	30,444	3.0	3.1
Other Local Government	555	0.8	0.5	7,656	1.2	2.0	2,936	3.2	2.7	28,832	3.8	4.3

Table 3

Vermont County and Industry Sectors, 2004 total covered

annual average with percent change from 2003 and 1999, units, employment, women, average wage

NAICS Major Industry Group	Reporting			Employment						Average Wage		
	2004	Units		2004	Total		2004	Women		2004	Pct change	
		Pct change			Pct change			Pct change				
		From 2003 %	Avg/2 99-04 %		From 2003 %	Avg/2 99-04 %		From 2003 %	Avg/2 99-04 %		From 2003 %	Avg/2 99-04 %
01. Addison - Total Covered	1,312	2.7	1.9	13,878	-0.2	1.1	7,029	1.5	1.3	31,827	4.1	4.1
Private Ownership	1,191	2.8	2.0	11,836	-0.4	1.0	5,743	2.5	1.0	32,175	4.1	4.2
Goods Producing - Private	330	4.3	4.1	3,452	0.8	0.8	921	-1.0	-0.5	37,269	2.7	3.7
Natural Resources and Mining	80	2.6	4.8	578	6.7	3.3	114	3.4	2.3	24,428	5.7	4.3
SECTOR 11, Agriculture, forestry, fishing & hunting	74	4.3	5.0	533	6.8	4.0	108	1.2	2.1	23,831	6.0	4.6
SECTOR 21, Mining	7	-12.9	2.4	45	5.2	-2.5	6	76.9	8.9	31,427	3.5	3.8
Construction	185	5.7	5.8	813	3.1	5.1	105	5.8	5.6	32,572	-1.4	2.5
SECTOR 23, Construction	185	5.7	5.8	813	3.1	5.1	105	5.8	5.6	32,572	-1.4	2.5
Manufacturing	65	2.4	-0.5	2,061	-1.6	-1.3	702	-2.6	-1.6	42,723	4.4	4.5
Durable Goods	40	5.9	1.3	1,199	-2.4	-3.3	420	-4.3	-2.8	47,334	5.1	5.8
Non-Durable Goods	25	-3.0	-3.0	862	-0.4	1.9	282	0.1	0.4	36,307	3.4	2.8
Service Providing - Private	862	2.3	1.2	8,383	-0.9	1.0	4,823	3.2	1.4	30,077	4.7	4.5
Trade, Transportation, and Utilities	279	0.4	0.3	2,408	4.4	-	1,046	14.9	0.3	27,610	5.0	4.1
SECTOR 42, Wholesale trade	53	-2.3	-1.1	254	-7.6	-2.3	56	-11.2	-6.2	38,297	6.7	3.4
SECTOR 44-45, Retail trade	194	3.3	1.7	1,891	7.7	0.8	921	17.9	0.8	26,216	6.0	4.7
SECTOR 48-49, Transportation & warehousing	n	n	n	n	n	n	n	n	n	n	n	n
SECTOR 22, Utilities	n	n	n	n	n	n	n	n	n	n	n	n
Information	25	8.9	9.9	119	2.9	-0.1	60	11.2	0.3	27,964	7.8	-1.4
Sector 51, Information	25	8.9	9.9	119	2.9	-0.1	60	11.2	0.3	27,964	7.8	-1.4
Financial Activities	72	3.2	1.6	423	-13.5	0.2	297	-3.6	1.3	34,094	-0.3	3.7
SECTOR 52, Finance and Insurance	40	-0.6	1.3	312	-14.4	-0.8	232	-3.4	1.1	38,680	-0.6	3.4
SECTOR 53, Real estate & rental & leasing	32	8.6	2.0	111	-10.7	3.3	66	-4.0	1.9	21,190	4.6	9.4
Professional and Business Services	164	3.8	5.0	665	7.7	1.8	331	13.7	-	35,160	-25.5	4.7
SECTOR 54, Professional, scientific, & technical svcs.	119	1.9	6.9	455	9.9	3.2	273	18.0	2.4	38,642	-33.6	3.9
SECTOR 55, Mgt. of companies & enterprises	-	-	-	-	-	-	-	-	-	-	-	-
SECTOR 56, Administrative & waste services	45	9.0	0.8	210	3.2	-1.0	57	-3.4	-8.3	27,614	12.0	5.9
Education & Health Services	120	0.6	0.9	3,164	-4.2	1.9	2,162	-1.4	2.3	37,431	14.3	4.7
SECTOR 61, Educational services	n	n	n	n	n	n	n	n	n	n	n	n
SECTOR 62, Health care & social assistance	n	n	n	n	n	n	n	n	n	n	n	n
Leisure and Hospitality	97	-0.5	2.6	1,267	-1.9	0.9	733	1.4	1.4	14,954	4.6	4.3
SECTOR 71, Arts, entertainment, & recreation	16	-3.0	5.1	104	-1.1	1.1	64	4.1	3.3	15,537	-0.9	5.6
SECTOR 72, Accommodation & food services	81	-	2.2	1,163	-2.0	0.9	669	1.1	1.3	14,901	5.2	4.2
Other Services	106	7.9	-3.7	337	2.2	0.5	195	-1.4	-0.7	21,178	6.5	6.7
SECTOR 81, Other services, except public admin.	106	7.9	-3.7	337	2.2	0.5	195	-1.4	-0.7	21,178	6.5	6.7
Government Ownership	121	1.7	1.3	2,042	0.8	2.2	1,286	-2.6	2.4	29,814	4.0	3.4
Federal Government /1	44	-	2.7	140	-2.0	0.5	-	-	-	41,102	8.8	4.9
491 Postal service	32	-	1.3	90	-2.4	-1.4	-	-	-	41,761	10.9	4.8
Other Federal Government	12	-	7.1	50	-1.3	4.4	-	-	-	39,925	5.0	5.3
State Government	15	25.0	4.6	166	-11.3	-1.9	66	-6.7	-3.1	36,062	0.8	6.1
SECTOR 61, Educational Services	2	-	-	43	0.2	-2.7	17	1.5	-6.1	18,479	3.9	12.3
Other State Government	13	30.0	5.4	124	-14.7	-1.6	49	-9.2	-1.9	42,156	2.7	5.1
Local Government	62	-1.6	-0.3	1,736	2.3	2.8	1,220	-2.3	2.8	28,303	4.3	3.0
SECTOR 61, Educational Services	27	-	-	1,450	2.4	3.3	1,127	-2.9	2.8	29,211	4.6	2.5
Other Local Government	35	-2.8	-0.6	285	1.9	0.4	93	5.7	2.4	23,688	2.6	4.9

Table 3

Vermont County and Industry Sectors, 2004 total covered

annual average with percent change from 2003 and 1999, units, employment, women, average wage

NAICS Major Industry Group	Reporting			Employment						Average Wage		
	2004	Units		2004	Total		2004	Women		2004	Wage	
		Pct change			Pct change			Pct change			Pct change	
		From 2003 %	Avg/2 99-04 %		From 2003 %	Avg/2 99-04 %		From 2003 %	Avg/2 99-04 %		From 2003 %	Avg/2 99-04 %
03. Bennington - Total Covered	1,583	1.1	-0.1	17,848	-0.7	-0.8	9,607	1.2	0.3	30,174	5.1	4.1
Private Ownership	1,488	0.7	-0.2	15,863	0.5	-0.8	8,408	3.0	0.5	29,682	5.9	4.1
Goods Producing - Private	267	5.7	0.7	3,421	-1.7	-4.0	1,086	-1.5	-4.4	37,665	5.9	3.4
Natural Resources and Mining	11	15.4	-1.7	97	-4.7	-1.5	33	14.9	5.8	19,202	-0.4	3.5
SECTOR 11, Agriculture, forestry, fishing & hunting	n	n	n	n	n	n	n	n	n	n	n	n
SECTOR 21, Mining	n	n	n	n	n	n	n	n	n	n	n	n
Construction	165	8.9	2.4	755	10.3	2.8	89	10.2	2.5	32,931	5.6	4.7
SECTOR 23, Construction	165	8.9	2.4	755	10.3	2.8	89	10.2	2.5	32,931	5.6	4.7
Manufacturing	91	-0.5	-1.7	2,568	-4.6	-5.7	964	-2.9	-5.1	39,757	6.7	3.5
Durable Goods	59	3.0	-0.4	1,888	-2.8	-2.1	635	1.2	-2.6	41,629	7.3	4.1
Non-Durable Goods	32	-6.7	-3.9	680	-9.1	-12.7	329	-10.0	-9.1	34,562	3.7	1.2
Service Providing - Private	1,221	-0.3	-0.4	12,442	1.2	0.2	7,323	3.7	1.4	27,487	6.1	4.9
Trade, Transportation, and Utilities	399	-1.8	-1.8	3,891	0.4	-0.2	1,968	2.6	0.8	25,713	8.4	4.3
SECTOR 42, Wholesale trade	47	2.2	-2.6	266	-5.8	-10.7	61	-12.8	-11.0	39,615	5.5	2.6
SECTOR 44-45, Retail trade	329	-1.0	-1.2	3,421	1.5	1.4	1,861	3.6	1.6	24,280	9.9	5.8
SECTOR 48-49, Transportation & warehousing	n	n	n	n	n	n	n	n	n	n	n	n
SECTOR 22, Utilities	n	n	n	n	n	n	n	n	n	n	n	n
Information	34	1.5	1.5	396	-1.5	-7.7	219	-0.8	-6.8	36,767	6.0	4.6
Sector 51, Information	34	1.5	1.5	396	-1.5	-7.7	219	-0.8	-6.8	36,767	6.0	4.6
Financial Activities	112	2.3	1.5	669	6.8	3.1	431	8.8	3.3	45,226	9.4	5.2
SECTOR 52, Finance and Insurance	54	5.4	1.4	426	4.8	3.5	299	5.3	2.9	50,171	5.8	5.0
SECTOR 53, Real estate & rental & leasing	59	-0.4	1.6	244	10.6	2.4	132	17.9	4.1	36,583	21.5	5.2
Professional and Business Services	209	-0.6	1.7	891	2.6	-1.3	370	1.9	-2.4	31,008	6.5	6.4
SECTOR 54, Professional, scientific, & technical svcs.	133	-2.9	2.1	397	-4.2	1.7	232	-1.6	3.7	39,210	4.5	4.1
SECTOR 55, Mgt. of companies & enterprises	4	-5.9	-	17	18.9	6.0	4	30.8	11.2	73,713	116.7	20.6
SECTOR 56, Administrative & waste services	72	4.4	1.0	477	8.4	-3.5	134	7.6	-9.5	22,682	7.7	6.5
Education & Health Services	143	0.7	1.5	3,634	0.6	2.9	2,655	3.4	3.3	32,829	4.7	4.8
SECTOR 61, Educational services	20	12.7	5.9	769	2.6	2.7	448	4.0	3.5	31,674	6.4	4.8
SECTOR 62, Health care & social assistance	123	-1.0	0.8	2,865	0.1	3.0	2,207	3.3	3.2	33,139	4.3	4.8
Leisure and Hospitality	191	2.3	-0.3	2,426	2.1	-0.5	1,353	4.2	1.3	16,721	3.0	4.4
SECTOR 71, Arts, entertainment, & recreation	36	5.1	1.3	422	-1.3	1.7	181	-1.2	2.6	25,861	14.8	5.4
SECTOR 72, Accommodation & food services	155	1.6	-0.7	2,004	2.8	-0.9	1,172	5.1	1.1	14,798	-0.3	3.8
Other Services	133	-2.2	-2.8	535	-0.3	-2.5	327	10.0	1.2	18,021	-	2.4
SECTOR 81, Other services, except public admin.	133	-2.2	-2.8	535	-0.3	-2.5	327	10.0	1.2	18,021	-	2.4
Government Ownership	96	6.7	1.3	1,986	-9.7	-1.1	1,199	-9.8	-1.2	34,105	1.6	4.3
Federal Government /1	29	11.8	2.2	133	1.8	0.4	-	-	-	38,645	4.7	2.6
491 Postal service	23	7.0	2.8	101	1.2	-0.3	-	-	-	40,220	6.3	2.8
Other Federal Government	6	37.5	-	32	3.8	3.0	-	-	-	33,647	-0.5	2.3
State Government	19	11.8	2.2	439	-31.0	-5.9	301	-18.9	-3.7	40,459	1.8	5.2
SECTOR 61, Educational Services	2	-	-	30	1.1	-3.9	28	-0.9	7.7	19,185	7.1	15.2
Other State Government	17	13.3	2.5	410	-32.5	-6.0	273	-20.4	-4.5	41,990	2.9	5.0
Local Government	48	2.1	0.4	1,413	-1.3	0.6	898	-6.3	-0.2	31,702	3.9	4.5
SECTOR 61, Educational Services	17	6.3	1.2	1,060	-2.0	0.6	787	-8.0	-0.4	32,955	4.4	4.5
Other Local Government	31	-	-	353	1.0	0.3	111	7.3	1.1	27,941	2.5	4.6

Table 3

Vermont County and Industry Sectors, 2004 total covered

annual average with percent change from 2003 and 1999, units, employment, women, average wage

NAICS Major Industry Group	Reporting			Employment						Average Wage		
	2004	Units		2004	Total		2004	Women		2004	Wage	
		Pct change			Pct change			Pct change			Pct change	
		From 2003 %	Avg/2 99-04 %		From 2003 %	Avg/2 99-04 %		From 2003 %	Avg/2 99-04 %		From 2003 %	Avg/2 99-04 %
05. Caledonia - Total Covered	1,042	2.1	0.4	11,542	1.5	0.9	5,769	0.7	1.2	27,514	4.7	4.0
Private Ownership	932	1.6	0.1	9,593	1.5	0.9	4,624	0.6	1.4	27,176	5.0	3.9
Goods Producing - Private	237	3.3	2.4	2,645	3.9	-1.3	575	3.0	-1.9	32,544	5.6	3.0
Natural Resources and Mining	22	3.6	-3.7	157	7.6	-8.5	52	26.1	-13.6	21,795	5.0	-0.3
SECTOR 11, Agriculture, forestry, fishing & hunting	18	10.9	-4.2	143	6.6	-9.3	50	24.4	-14.2	19,860	0.9	-1.6
SECTOR 21, Mining	4	-20.0	-1.2	14	19.3	5.3	2	80.0	17.6	41,617	26.3	4.0
Construction	156	4.5	4.8	786	7.8	5.1	85	-9.5	3.5	31,457	2.8	4.8
SECTOR 23, Construction	156	4.5	4.8	786	7.8	5.1	85	-9.5	3.5	31,457	2.8	4.8
Manufacturing	59	-	-0.5	1,703	1.9	-2.9	438	3.5	-0.7	34,033	7.0	2.7
Durable Goods	41	0.6	0.7	1,236	3.2	-0.7	252	5.5	2.7	35,133	9.0	3.6
Non-Durable Goods	18	-1.4	-3.0	467	-1.7	-7.6	186	0.8	-4.5	31,119	1.3	0.5
Service Providing - Private	695	1.1	-0.6	6,947	0.7	1.8	4,049	0.3	2.0	25,132	4.5	4.8
Trade, Transportation, and Utilities	250	2.7	-1.6	2,344	2.5	0.7	1,042	2.4	1.2	24,984	8.1	5.3
SECTOR 42, Wholesale trade	43	2.4	0.6	303	4.1	9.2	75	8.7	6.5	34,111	0.9	-0.4
SECTOR 44-45, Retail trade	168	1.8	-1.9	1,623	0.3	-1.0	846	0.9	0.6	21,870	9.1	6.3
SECTOR 48-49, Transportation & warehousing	35	7.7	-2.8	369	11.0	2.5	119	9.7	2.6	26,470	9.9	3.1
SECTOR 22, Utilities	4	-	-	49	8.3	3.2	3	-	-	60,485	5.9	3.5
Information	24	-2.1	5.5	267	-1.8	0.2	136	-1.6	-	31,586	8.2	4.8
Sector 51, Information	24	-2.1	5.5	267	-1.8	0.2	136	-1.6	-	31,586	8.2	4.8
Financial Activities	60	-6.3	-1.2	405	-1.7	0.3	289	-6.0	-1.0	33,101	9.3	6.5
SECTOR 52, Finance and Insurance	42	-9.7	-0.5	331	-4.9	0.2	245	-9.7	-1.5	35,447	11.3	6.1
SECTOR 53, Real estate & rental & leasing	18	2.9	-2.8	74	15.9	1.0	44	21.7	1.9	22,644	3.7	9.9
Professional and Business Services	107	6.2	0.2	429	-5.0	1.7	236	1.4	-0.1	35,908	9.7	2.2
SECTOR 54, Professional, scientific, & technical svcs.	75	8.7	0.6	294	-0.7	0.8	174	-0.1	0.5	42,718	10.3	2.5
SECTOR 55, Mgt. of companies & enterprises	n	n	n	n	n	n	n	n	n	n	n	n
SECTOR 56, Administrative & waste services	n	n	n	n	n	n	n	n	n	n	n	n
Education & Health Services	94	-1.6	0.2	2,125	0.9	4.4	1,538	-0.3	3.7	27,685	-1.5	3.9
SECTOR 61, Educational services	13	4.0	5.4	470	1.6	3.6	260	2.3	6.7	32,688	5.3	3.4
SECTOR 62, Health care & social assistance	81	-2.4	-0.5	1,655	0.7	4.7	1,278	-0.8	3.2	26,263	-3.8	4.2
Leisure and Hospitality	77	2.0	0.8	998	-0.2	1.2	605	1.8	2.1	12,939	8.5	5.8
SECTOR 71, Arts, entertainment, & recreation	9	12.5	-2.1	72	1.5	-1.0	29	4.5	-1.7	17,211	-	4.6
SECTOR 72, Accommodation & food services	68	0.7	1.2	926	-0.4	1.3	576	1.7	2.3	12,607	9.4	6.0
Other Services	85	-0.9	-1.2	380	1.4	0.4	204	-	1.6	18,605	2.0	5.0
SECTOR 81, Other services, except public admin.	85	-0.9	-1.2	380	1.4	0.4	204	-	1.6	18,605	2.0	5.0
Government Ownership	110	5.8	2.3	1,950	1.6	0.7	1,145	0.9	0.5	29,175	3.4	4.3
Federal Government /1	37	2.8	0.4	112	-1.8	-0.1	-	-	-	36,162	8.9	3.6
491 Postal service	27	-	-0.2	89	-3.6	-1.5	-	-	-	35,060	9.0	3.6
Other Federal Government	10	11.8	2.2	23	5.7	7.2	-	-	-	40,420	7.4	2.5
State Government	21	31.3	5.6	620	3.6	1.8	277	2.6	1.4	36,855	2.4	5.1
SECTOR 61, Educational Services	3	-	-	286	1.1	1.1	161	2.2	2.3	30,516	2.0	4.4
Other State Government	18	38.5	6.7	334	5.8	2.4	117	3.1	0.2	42,287	2.1	5.3
Local Government	52	-	2.5	1,218	1.0	0.3	868	0.3	0.2	24,620	3.1	3.6
SECTOR 61, Educational Services	16	-	1.3	847	1.5	-0.2	705	-0.6	-0.3	24,409	2.5	3.2
Other Local Government	36	-	3.0	371	-0.1	1.4	164	4.6	2.4	25,102	4.5	4.5

Table 3

Vermont County and Industry Sectors, 2004 total covered

annual average with percent change from 2003 and 1999, units, employment, women, average wage

NAICS Major Industry Group	Reporting			Employment						Average Wage		
	2004	Units		2004	Total		2004	Women		2004	Wage	
		Pct change			Pct change			Pct change			Pct change	
		From 2003 %	Avg/2 99-04 %		From 2003 %	Avg/2 99-04 %		From 2003 %	Avg/2 99-04 %		From 2003 %	Avg/2 99-04 %
07. Chittenden - Total Covered	5,677	0.8	0.6	94,881	1.4	0.8	44,085	0.9	1.2	38,433	2.7	3.2
Private Ownership	5,437	0.6	0.6	80,362	1.2	0.3	36,667	0.7	1.3	38,118	2.7	3.2
Goods Producing - Private	856	-1.4	0.2	18,170	-0.1	-3.1	4,000	-5.3	-3.9	53,116	1.4	3.7
Natural Resources and Mining	22	-8.2	-0.7	178	-3.9	-3.0	73	-2.7	-5.4	27,018	4.6	5.5
SECTOR 11, Agriculture, forestry, fishing & hunting	18	-9.9	-1.8	137	-6.7	-4.4	67	-6.9	-6.4	20,933	4.3	5.4
SECTOR 21, Mining	4	-	5.9	41	6.5	2.4	6	100.0	14.9	47,180	-0.8	2.3
Construction	611	0.1	1.1	5,298	8.8	0.4	540	2.6	0.5	40,164	3.0	3.2
SECTOR 23, Construction	611	0.1	1.1	5,298	8.8	0.4	540	2.6	0.5	40,164	3.0	3.2
Manufacturing	222	-4.7	-1.9	12,694	-3.3	-4.3	3,386	-6.5	-4.5	58,888	2.0	4.2
Durable Goods	150	-6.7	-0.6	10,763	-3.1	-4.5	2,751	-6.0	-4.7	62,812	1.4	4.3
Non-Durable Goods	72	-0.3	-4.2	1,931	-4.6	-3.0	635	-8.6	-3.3	37,024	6.2	4.4
Service Providing - Private	4,581	1.0	0.6	62,192	1.5	1.5	32,667	1.4	2.0	33,736	3.6	3.6
Trade, Transportation, and Utilities	1,302	-1.5	-0.6	18,913	0.9	1.3	7,756	2.7	1.6	30,208	3.4	3.4
SECTOR 42, Wholesale trade	339	-2.7	0.6	3,426	0.5	1.9	804	3.9	-0.5	48,955	3.7	4.6
SECTOR 44-45, Retail trade	840	-0.7	-1.0	12,731	1.3	1.7	6,202	3.2	2.2	23,620	3.6	3.5
SECTOR 48-49, Transportation & warehousing	118	-3.1	-0.4	2,504	0.4	-	681	-2.7	-0.1	33,879	2.0	1.8
SECTOR 22, Utilities	5	-4.8	-3.6	252	-3.9	-5.8	69	-2.1	-2.7	71,642	9.2	4.0
Information	146	0.7	2.1	2,429	-1.7	-0.7	1,125	0.5	-	46,763	4.7	4.5
Sector 51, Information	146	0.7	2.1	2,429	-1.7	-0.7	1,125	0.5	-	46,763	4.7	4.5
Financial Activities	516	6.0	1.2	4,877	-0.3	-0.3	2,929	0.2	0.1	53,519	3.1	6.2
SECTOR 52, Finance and Insurance	300	4.9	1.1	3,673	-1.5	-0.4	2,430	-1.3	-	60,960	3.4	6.7
SECTOR 53, Real estate & rental & leasing	216	7.6	1.3	1,204	3.5	-0.1	499	7.8	1.1	30,830	4.9	3.7
Professional and Business Services	1,037	1.3	1.7	9,505	3.7	1.1	4,082	5.1	0.8	43,345	3.5	4.1
SECTOR 54, Professional, scientific, & technical svcs.	746	1.4	1.4	5,911	1.0	1.0	2,763	2.0	1.7	55,279	4.9	4.4
SECTOR 55, Mgt. of companies & enterprises	n	n	n	n	n	n	n	n	n	n	n	n
SECTOR 56, Administrative & waste services	n	n	n	n	n	n	n	n	n	n	n	n
Education & Health Services	578	2.1	1.5	14,751	1.6	2.8	10,958	0.6	3.4	35,282	3.1	2.5
SECTOR 61, Educational services	81	4.9	1.8	2,199	-	-0.4	1,297	-2.0	-0.4	28,089	3.4	3.3
SECTOR 62, Health care & social assistance	497	1.6	1.4	12,553	1.8	3.5	9,661	1.0	3.9	36,542	3.0	2.3
Leisure and Hospitality	492	1.4	1.6	8,792	4.4	2.1	4,331	2.8	3.1	15,746	6.9	3.6
SECTOR 71, Arts, entertainment, & recreation	102	-	1.2	1,559	-0.6	3.5	796	-4.0	3.4	17,541	18.6	2.1
SECTOR 72, Accommodation & food services	390	1.8	1.7	7,234	5.6	1.8	3,536	4.5	3.0	15,359	4.4	3.9
Other Services	512	0.1	-1.1	2,924	-4.1	0.1	1,486	-8.6	0.3	27,797	7.8	3.3
SECTOR 81, Other services, except public admin.	512	0.1	-1.1	2,924	-4.1	0.1	1,486	-8.6	0.3	27,797	7.8	3.3
Government Ownership	240	5.5	1.7	14,518	3.1	3.7	7,419	2.0	0.9	40,174	2.4	2.8
Federal Government /1	86	3.0	2.5	2,031	-3.1	2.9	-	-	-	53,181	7.6	4.5
491 Postal service	33	4.8	1.6	489	-0.9	-2.3	-	-	-	49,370	8.4	5.0
Other Federal Government	53	1.9	3.1	1,542	-3.8	5.0	-	-	-	54,388	7.5	4.1
State Government	35	16.7	3.1	5,832	5.7	4.7	3,268	5.2	-0.7	42,303	1.4	2.2
SECTOR 61, Educational Services	2	-	-	4,056	4.0	5.2	2,264	2.4	-2.2	42,255	1.1	0.9
Other State Government	33	17.9	3.3	1,777	9.8	3.6	1,004	12.2	3.2	42,412	2.1	5.2
Local Government	120	4.4	0.7	6,655	2.8	3.1	4,151	-0.3	2.4	34,339	1.6	2.7
SECTOR 61, Educational Services	23	-	-	4,483	3.7	3.4	3,339	-0.2	2.6	34,039	0.1	1.9
Other Local Government	97	5.5	0.9	2,172	1.0	2.5	812	-0.7	1.5	34,958	4.8	4.3

Table 3

Vermont County and Industry Sectors, 2004 total covered

annual average with percent change from 2003 and 1999, units, employment, women, average wage

NAICS Major Industry Group	Reporting			Employment						Average Wage		
	2004	Units		2004	Total		2004	Women		2004	Wage	
		Pct change			Pct change			Pct change			Pct change	
		From 2003 %	Avg/2 99-04 %		From 2003 %	Avg/2 99-04 %		From 2003 %	Avg/2 99-04 %		From 2003 %	Avg/2 99-04 %
09. Essex - Total Covered	170	-1.5	-0.5	1,502	5.9	-3.4	651	7.1	-1.1	27,824	9.1	2.3
Private Ownership	128	-2.7	-0.9	1,087	3.3	-5.2	400	1.7	-3.0	26,111	7.4	0.3
Goods Producing - Private	50	-4.8	-1.0	709	5.0	-8.0	184	3.4	-6.0	29,467	6.6	-
Natural Resources and Mining	n	n	n	n	n	n	n	n	n	n	n	n
SECTOR 11, Agriculture, forestry, fishing & hunting	n	n	n	n	n	n	n	n	n	n	n	n
SECTOR 21, Mining	-	-	-	-	-	-	-	-	-	-	-	-
Construction	21	-3.4	0.5	71	18.6	1.9	12	28.9	8.2	23,584	-1.0	-0.5
SECTOR 23, Construction	21	-3.4	0.5	71	18.6	1.9	12	28.9	8.2	23,584	-1.0	-0.5
Manufacturing	n	n	n	n	n	n	n	n	n	n	n	n
Durable Goods	n	n	n	n	n	n	n	n	n	n	n	n
Non-Durable Goods	n	n	n	n	n	n	n	n	n	n	n	n
Service Providing - Private	78	-1.3	-0.9	379	0.4	1.8	217	0.3	0.1	19,827	8.1	7.0
Trade, Transportation, and Utilities	29	-2.5	-1.0	139	0.3	5.2	59	9.2	1.6	21,142	7.2	9.0
SECTOR 42, Wholesale trade	n	n	n	n	n	n	n	n	n	n	n	n
SECTOR 44-45, Retail trade	16	-1.6	0.3	82	1.2	3.7	44	3.6	1.3	13,667	11.2	4.1
SECTOR 48-49, Transportation & warehousing	n	n	n	n	n	n	n	n	n	n	n	n
SECTOR 22, Utilities	n	n	n	n	n	n	n	n	n	n	n	n
Information	n	n	n	n	n	n	n	n	n	n	n	n
Sector 51, Information	n	n	n	n	n	n	n	n	n	n	n	n
Financial Activities	n	n	n	n	n	n	n	n	n	n	n	n
SECTOR 52, Finance and Insurance	n	n	n	n	n	n	n	n	n	n	n	n
SECTOR 53, Real estate & rental & leasing	n	n	n	n	n	n	n	n	n	n	n	n
Professional and Business Services	8	-3.1	-5.0	30	11.8	-9.9	12	-2.1	-9.1	32,651	7.3	13.3
SECTOR 54, Professional, scientific, & technical svcs.	n	n	n	n	n	n	n	n	n	n	n	n
SECTOR 55, Mgt. of companies & enterprises	-	-	-	-	-	-	-	-	-	-	-	-
SECTOR 56, Administrative & waste services	n	n	n	n	n	n	n	n	n	n	n	n
Education & Health Services	9	12.5	2.4	66	-1.3	4.9	50	1.0	1.7	28,805	7.1	5.2
SECTOR 61, Educational services	-	-	-	-	-	-	-	-	-	-	-	-
SECTOR 62, Health care & social assistance	9	12.5	2.4	66	-1.3	4.9	50	1.0	1.7	28,805	7.1	5.2
Leisure and Hospitality	17	-	0.6	105	-0.5	2.1	68	-2.5	0.1	9,938	8.7	3.0
SECTOR 71, Arts, entertainment, & recreation	n	n	n	n	n	n	n	n	n	n	n	n
SECTOR 72, Accommodation & food services	n	n	n	n	n	n	n	n	n	n	n	n
Other Services	10	-9.1	-2.3	24	1.8	-0.7	15	-10.3	-2.4	13,795	13.7	4.2
SECTOR 81, Other services, except public admin.	10	-9.1	-2.3	24	1.8	-0.7	15	-10.3	-2.4	13,795	13.7	4.2
Government Ownership	42	2.4	1.0	414	13.1	2.8	250	17.1	2.3	32,320	11.7	8.6
Federal Government /1	17	-	1.2	88	6.7	5.6	-	-	-	57,890	11.4	6.7
491 Postal service	11	-	-	26	-1.6	-2.1	-	-	-	31,199	4.2	6.0
Other Federal Government	6	-	3.7	62	10.5	10.2	-	-	-	68,846	10.8	4.4
State Government	2	-	14.9	42	-	94.7	29	-	87.2	42,097	-	11.0
SECTOR 61, Educational Services	-	-	-100.0	-	-	-100.0	-	-	-100.0	-	-	-100.0
Other State Government	2	-	-	42	-	-	29	-	-	42,097	-	-
Local Government	23	-4.2	-	284	0.2	-0.6	222	3.6	-0.1	22,977	3.4	6.5
SECTOR 61, Educational Services	9	-	-	196	2.2	-0.9	170	5.3	-0.3	25,110	1.7	6.4
Other Local Government	14	-6.7	-	88	-3.8	0.3	51	-1.4	0.6	18,233	6.8	7.2

Table 3

Vermont County and Industry Sectors, 2004 total covered

annual average with percent change from 2003 and 1999, units, employment, women, average wage

NAICS Major Industry Group	Reporting			Employment						Average Wage		
	2004	Units		2004	Total		2004	Women		2004	Wage	
		Pct change			Pct change			Pct change			Pct change	
		From 2003 %	Avg/2 99-04 %		From 2003 %	Avg/2 99-04 %		From 2003 %	Avg/2 99-04 %		From 2003 %	Avg/2 99-04 %
11. Franklin - Total Covered	1,211	2.1	1.3	15,529	1.2	1.6	7,638	0.6	1.1	31,442	4.5	4.7
Private Ownership	1,094	1.9	1.3	12,040	0.9	1.0	5,948	0.4	0.5	29,771	4.5	4.4
Goods Producing - Private	260	4.4	2.5	3,515	1.0	-0.8	871	2.3	-3.9	37,241	3.7	4.0
Natural Resources and Mining	42	10.5	8.8	322	15.3	8.7	51	2.0	8.1	23,436	2.1	2.2
SECTOR 11, Agriculture, forestry, fishing & hunting	39	10.6	9.7	303	17.3	10.5	51	4.1	10.0	21,903	2.2	3.6
SECTOR 21, Mining	3	9.1	-	20	-8.5	-7.4	-	-100.0	-100.0	46,923	14.4	4.2
Construction	151	4.1	2.8	499	-3.2	1.7	59	-1.3	1.6	30,293	9.2	4.5
SECTOR 23, Construction	151	4.1	2.8	499	-3.2	1.7	59	-1.3	1.6	30,293	9.2	4.5
Manufacturing	67	1.5	-1.0	2,694	0.3	-2.0	761	2.6	-4.8	40,179	3.5	4.5
Durable Goods	30	-4.8	-3.6	699	2.9	-3.2	231	7.3	-3.7	35,482	3.6	4.9
Non-Durable Goods	38	7.1	1.4	1,995	-0.5	-1.6	530	0.7	-5.3	41,824	3.7	4.3
Service Providing - Private	834	1.1	0.9	8,525	0.8	1.7	5,077	-	1.4	26,691	4.9	5.0
Trade, Transportation, and Utilities	310	-0.3	-0.5	3,236	0.1	0.3	1,349	-0.1	-0.6	26,974	5.5	5.3
SECTOR 42, Wholesale trade	49	-10.6	-1.8	553	-3.7	-3.3	199	-1.7	-3.6	33,705	6.7	5.8
SECTOR 44-45, Retail trade	209	0.1	-0.3	2,157	1.4	1.0	987	0.7	-0.7	22,566	4.9	4.6
SECTOR 48-49, Transportation & warehousing	n	n	n	n	n	n	n	n	n	n	n	n
SECTOR 22, Utilities	n	n	n	n	n	n	n	n	n	n	n	n
Information	19	-9.5	2.6	721	12.2	4.6	546	8.9	3.5	26,740	-5.2	5.7
Sector 51, Information	19	-9.5	2.6	721	12.2	4.6	546	8.9	3.5	26,740	-5.2	5.7
Financial Activities	76	-3.8	1.8	377	-0.7	-4.5	254	2.0	-4.8	33,296	1.1	3.7
SECTOR 52, Finance and Insurance	48	-1.0	2.6	288	-2.2	-6.6	213	2.5	-6.0	37,856	3.8	4.9
SECTOR 53, Real estate & rental & leasing	28	-8.3	0.6	89	4.5	4.7	41	-0.6	3.2	18,611	-10.4	2.4
Professional and Business Services	111	4.2	3.1	502	-9.6	5.6	219	-7.1	6.6	33,586	10.5	3.1
SECTOR 54, Professional, scientific, & technical svcs.	73	0.7	2.7	263	-7.7	4.5	172	-3.2	8.7	43,192	5.6	2.5
SECTOR 55, Mgt. of companies & enterprises	n	n	n	n	n	n	n	n	n	n	n	n
SECTOR 56, Administrative & waste services	n	n	n	n	n	n	n	n	n	n	n	n
Education & Health Services	112	5.9	3.7	2,306	2.1	4.4	1,900	1.3	4.2	31,602	6.6	5.0
SECTOR 61, Educational services	n	n	n	n	n	n	n	n	n	n	n	n
SECTOR 62, Health care & social assistance	n	n	n	n	n	n	n	n	n	n	n	n
Leisure and Hospitality	103	5.1	2.6	1,035	-0.5	1.2	656	-7.8	-0.8	11,478	3.6	3.5
SECTOR 71, Arts, entertainment, & recreation	13	25.0	4.0	86	8.5	4.3	48	2.7	6.9	12,199	10.8	3.9
SECTOR 72, Accommodation & food services	90	2.8	2.4	949	-1.3	0.9	607	-8.6	-1.2	11,413	3.0	3.4
Other Services	104	-0.7	-1.7	349	0.1	-0.5	154	1.8	-2.9	19,548	4.1	4.9
SECTOR 81, Other services, except public admin.	104	-0.7	-1.7	349	0.1	-0.5	154	1.8	-2.9	19,548	4.1	4.9
Government Ownership	118	4.7	1.0	3,489	2.2	3.9	1,690	1.4	3.3	37,210	4.1	5.0
Federal Government /1	49	2.6	1.1	1,115	6.6	8.8	-	-	-	52,175	5.4	4.8
491 Postal service	25	3.1	1.7	99	-2.5	-1.4	-	-	-	39,667	6.8	3.9
Other Federal Government	24	2.2	0.4	1,016	7.6	10.3	-	-	-	53,394	5.1	4.6
State Government	16	23.1	4.2	373	-5.1	-0.6	168	14.3	1.6	39,315	1.1	6.1
SECTOR 61, Educational Services	2	-	-	55	0.3	-3.0	29	3.5	0.3	22,118	8.2	14.1
Other State Government	14	27.3	4.9	318	-6.0	-0.1	139	16.8	1.9	42,301	0.9	5.3
Local Government	53	1.9	-	2,001	1.3	2.6	1,522	0.2	3.5	28,481	2.4	3.3
SECTOR 61, Educational Services	19	-	-	1,624	0.7	2.8	1,389	-0.4	3.6	29,036	2.5	3.1
Other Local Government	34	3.0	-	377	4.1	1.7	134	6.6	2.5	26,090	2.1	4.6

Table 3

Vermont County and Industry Sectors, 2004 total covered

annual average with percent change from 2003 and 1999, units, employment, women, average wage

NAICS Major Industry Group	Reporting			Employment						Average Wage		
	2004	Units		2004	Total		2004	Women		2004	Wage	
		Pct change			Pct change			Pct change			Pct change	
		From 2003 %	Avg/2 99-04 %		From 2003 %	Avg/2 99-04 %		From 2003 %	Avg/2 99-04 %		From 2003 %	Avg/2 99-04 %
13. Grand Isle - Total Covered	220	11.0	3.3	1,164	10.7	4.3	595	12.2	3.4	24,299	8.5	4.7
Private Ownership	188	12.8	3.6	845	11.9	4.5	375	8.7	2.9	22,903	13.4	5.7
Goods Producing - Private	58	10.5	5.6	253	30.5	12.5	52	18.3	10.4	32,869	19.3	5.6
Natural Resources and Mining	6	-8.3	6.6	33	-3.0	14.3	11	-4.3	11.6	18,690	-0.4	9.0
SECTOR 11, Agriculture, forestry, fishing & hunting	n	n	n	n	n	n	n	n	n	n	n	n
SECTOR 21, Mining	n	n	n	n	n	n	n	n	n	n	n	n
Construction	46	13.6	6.9	187	43.7	14.6	21	39.3	9.5	36,900	20.1	7.0
SECTOR 23, Construction	46	13.6	6.9	187	43.7	14.6	21	39.3	9.5	36,900	20.1	7.0
Manufacturing	7	8.3	-2.2	34	11.4	2.9	19	14.9	10.9	24,467	3.1	-2.9
Durable Goods	n	n	n	n	n	n	n	n	n	n	n	n
Non-Durable Goods	n	n	n	n	n	n	n	n	n	n	n	n
Service Providing - Private	130	13.8	2.8	591	5.4	2.0	323	7.3	1.9	18,633	5.5	4.0
Trade, Transportation, and Utilities	40	17.6	0.6	246	9.0	2.0	117	7.9	2.0	19,897	6.2	3.4
SECTOR 42, Wholesale trade	n	n	n	n	n	n	n	n	n	n	n	n
SECTOR 44-45, Retail trade	31	9.8	1.7	179	3.7	1.7	99	5.3	1.4	16,519	6.9	4.1
SECTOR 48-49, Transportation & warehousing	n	n	n	n	n	n	n	n	n	n	n	n
SECTOR 22, Utilities	n	n	n	n	n	n	n	n	n	n	n	n
Information	n	n	n	n	n	n	n	n	n	n	n	n
Sector 51, Information	n	n	n	n	n	n	n	n	n	n	n	n
Financial Activities	n	n	n	n	n	n	n	n	n	n	n	n
SECTOR 52, Finance and Insurance	n	n	n	n	n	n	n	n	n	n	n	n
SECTOR 53, Real estate & rental & leasing	n	n	n	n	n	n	n	n	n	n	n	n
Professional and Business Services	28	25.6	10.1	57	6.6	2.0	31	6.9	2.2	29,219	24.3	14.1
SECTOR 54, Professional, scientific, & technical svcs.	19	13.6	8.4	25	13.2	3.4	18	32.1	9.2	35,145	-8.6	5.2
SECTOR 55, Mgt. of companies & enterprises	-	-	-	-	-	-	-	-	-	-	-	-
SECTOR 56, Administrative & waste services	10	58.3	13.7	32	1.9	1.0	14	-14.3	-3.9	24,540	90.3	30.2
Education & Health Services	12	20.0	8.4	54	6.7	3.2	49	15.5	2.8	16,756	0.2	3.4
SECTOR 61, Educational services	n	n	n	n	n	n	n	n	n	n	n	n
SECTOR 62, Health care & social assistance	n	n	n	n	n	n	n	n	n	n	n	n
Leisure and Hospitality	28	4.8	1.5	171	1.8	1.9	88	4.2	1.5	13,109	-4.7	-0.2
SECTOR 71, Arts, entertainment, & recreation	5	-	1.0	33	-4.8	19.0	12	2.1	28.5	14,305	-9.8	-5.7
SECTOR 72, Accommodation & food services	23	5.9	1.6	138	3.6	-0.6	76	4.5	-0.6	12,825	-2.9	0.3
Other Services	10	-2.4	-5.5	29	4.8	-3.7	16	16.7	-2.4	17,833	-8.9	3.4
SECTOR 81, Other services, except public admin.	10	-2.4	-5.5	29	4.8	-3.7	16	16.7	-2.4	17,833	-8.9	3.4
Government Ownership	32	1.6	1.8	319	7.8	3.5	221	18.7	4.2	27,990	-	2.9
Federal Government /1	12	-4.0	1.3	24	-2.4	1.7	-	-	-	45,324	8.7	6.6
491 Postal service	10	-	1.6	19	-4.9	0.5	-	-	-	37,404	8.6	3.0
Other Federal Government	2	-20.0	-	5	10.2	7.8	-	-	-	79,499	1.8	16.7
State Government	4	33.3	5.9	40	10.7	4.8	8	166.7	21.7	41,134	5.2	4.5
SECTOR 61, Educational Services	-	-	-	-	-	-	-	-	-	-	-	-
Other State Government	4	33.3	5.9	40	10.7	4.8	8	166.7	21.7	41,134	5.2	4.5
Local Government	16	-	1.3	256	8.4	3.5	213	16.3	3.8	24,320	-2.2	1.9
SECTOR 61, Educational Services	6	-	-	199	13.7	4.0	185	18.2	4.4	26,111	-6.0	0.5
Other Local Government	10	-	2.1	57	-6.7	1.9	28	4.8	0.2	18,033	9.5	9.6

Table 3

Vermont County and Industry Sectors, 2004 total covered

annual average with percent change from 2003 and 1999, units, employment, women, average wage

NAICS Major Industry Group	Reporting			Employment						Average Wage		
	2004	Units		2004	Total		2004	Women		2004	Pct change	
		Pct change			Pct change			Pct change				
		From 2003 %	Avg/2 99-04 %		From 2003 %	Avg/2 99-04 %		From 2003 %	Avg/2 99-04 %			
15. Lamoille - Total Covered	1,055	3.5	0.7	10,633	0.7	0.5	5,819	1.0	1.5	27,003	6.2	5.3
Private Ownership	982	3.5	0.8	9,021	0.4	0.4	4,794	0.3	1.3	26,296	6.8	5.5
Goods Producing - Private	236	2.8	2.4	1,528	2.7	0.3	396	5.0	-1.0	31,145	3.2	3.8
Natural Resources and Mining	17	8.1	7.3	66	5.4	8.5	22	11.5	20.7	17,319	-2.8	-0.8
SECTOR 11, Agriculture, forestry, fishing & hunting	n	n	n	n	n	n	n	n	n	n	n	n
SECTOR 21, Mining	n	n	n	n	n	n	n	n	n	n	n	n
Construction	167	2.5	3.6	804	2.9	3.1	88	-1.7	3.6	31,162	5.7	4.3
SECTOR 23, Construction	167	2.5	3.6	804	2.9	3.1	88	-1.7	3.6	31,162	5.7	4.3
Manufacturing	52	2.5	-1.9	658	2.2	-3.1	286	6.7	-3.1	32,518	0.8	3.9
Durable Goods	35	2.9	-1.5	449	1.1	-2.0	130	3.2	-0.4	36,967	1.7	3.2
Non-Durable Goods	17	1.5	-2.7	209	4.6	-5.3	156	9.8	-5.0	22,943	-0.7	4.8
Service Providing - Private	747	3.8	0.4	7,493	-0.1	0.4	4,398	-0.1	1.5	25,307	7.6	5.9
Trade, Transportation, and Utilities	226	1.7	-0.3	1,762	0.8	-0.1	850	3.3	0.3	25,412	5.5	5.1
SECTOR 42, Wholesale trade	n	n	n	n	n	n	n	n	n	n	n	n
SECTOR 44-45, Retail trade	166	1.5	-1.0	1,495	0.2	-0.6	779	2.5	0.2	23,293	5.6	4.8
SECTOR 48-49, Transportation & warehousing	26	8.4	0.2	118	-0.5	3.9	20	9.7	2.7	18,935	5.7	4.9
SECTOR 22, Utilities	n	n	n	n	n	n	n	n	n	n	n	n
Information	18	20.7	0.6	100	-0.1	1.2	49	-9.7	1.3	37,033	27.2	10.8
Sector 51, Information	18	20.7	0.6	100	-0.1	1.2	49	-9.7	1.3	37,033	27.2	10.8
Financial Activities	57	7.1	1.5	320	5.3	3.1	217	5.3	3.1	35,777	19.6	7.6
SECTOR 52, Finance and Insurance	24	2.1	-0.8	202	-3.0	1.6	155	-	0.6	38,824	15.6	6.6
SECTOR 53, Real estate & rental & leasing	33	11.1	3.4	118	23.3	6.0	62	21.7	11.9	30,560	39.2	11.7
Professional and Business Services	149	7.8	2.7	555	11.3	1.1	246	13.6	2.1	35,147	2.0	8.5
SECTOR 54, Professional, scientific, & technical svcs.	95	2.4	-0.3	294	8.3	2.1	166	10.3	4.4	39,671	3.0	6.9
SECTOR 55, Mgt. of companies & enterprises	-	-	-	-	-	-	-	-	-	-	-	-
SECTOR 56, Administrative & waste services	54	18.8	9.6	261	14.8	-	80	21.1	-2.0	30,060	1.4	10.4
Education & Health Services	90	6.9	2.3	1,487	0.1	2.5	1,167	1.1	2.7	30,864	8.0	6.4
SECTOR 61, Educational services	19	7.0	5.9	187	4.6	5.4	125	22.0	9.0	20,447	6.9	6.1
SECTOR 62, Health care & social assistance	71	6.8	1.4	1,301	-0.5	2.1	1,042	-0.9	2.1	32,361	8.3	6.6
Leisure and Hospitality	123	-	-0.8	2,928	-3.5	-0.4	1,687	-4.2	1.5	19,258	5.9	4.4
SECTOR 71, Arts, entertainment, & recreation	20	11.3	3.3	125	-8.9	10.4	66	-21.1	16.5	18,107	3.0	-8.1
SECTOR 72, Accommodation & food services	103	-1.9	-1.5	2,803	-3.2	-0.8	1,621	-3.3	1.1	19,310	6.0	4.9
Other Services	86	-	-2.3	341	3.9	-1.2	183	-3.7	-2.1	23,179	3.0	5.2
SECTOR 81, Other services, except public admin.	86	-	-2.3	341	3.9	-1.2	183	-3.7	-2.1	23,179	3.0	5.2
Government Ownership	73	3.6	-0.7	1,611	2.2	1.1	1,025	4.2	2.5	30,964	3.2	4.4
Federal Government /1	26	2.0	-2.5	76	-4.9	0.7	-	-	-	37,840	11.6	3.2
491 Postal service	20	-	-	63	-3.7	-0.4	-	-	-	39,405	13.1	3.7
Other Federal Government	6	10.0	-9.4	12	-10.9	8.0	-	-	-	29,759	1.1	1.0
State Government	13	18.2	3.4	408	7.2	-0.7	267	15.3	5.8	33,213	-	5.3
SECTOR 61, Educational Services	3	-	-	296	6.0	-2.1	201	15.2	7.0	30,070	-1.4	5.0
Other State Government	10	25.0	4.6	112	10.6	3.9	66	15.8	2.6	41,485	2.1	4.8
Local Government	34	-	-0.6	1,128	1.0	1.9	758	0.8	1.4	29,690	3.7	4.3
SECTOR 61, Educational Services	13	-	-	817	-0.7	1.4	645	-1.0	1.2	29,342	5.2	4.1
Other Local Government	21	-	-0.9	311	6.0	3.1	113	11.9	2.7	30,602	-0.1	4.7

Table 3

Vermont County and Industry Sectors, 2004 total covered

annual average with percent change from 2003 and 1999, units, employment, women, average wage

NAICS Major Industry Group	Reporting			Employment						Average Wage		
	2004	Units		2004	Total		2004	Women		2004	Wage	
		Pct change			Pct change			Pct change			Pct change	
		From 2003 %	Avg/2 99-04 %		From 2003 %	Avg/2 99-04 %		From 2003 %	Avg/2 99-04 %		From 2003 %	Avg/2 99-04 %
17. Orange - Total Covered	860	0.4	1.8	7,847	-1.7	0.9	4,018	-2.1	0.9	27,513	3.9	4.0
Private Ownership	765	-0.1	2.0	5,911	-2.3	0.5	2,781	-3.8	0.1	27,304	5.0	4.3
Goods Producing - Private	228	4.0	4.0	1,599	2.0	-1.1	315	-6.0	-3.2	29,531	3.2	3.2
Natural Resources and Mining	34	17.1	5.9	164	23.0	6.9	43	24.1	11.2	25,766	3.7	2.3
SECTOR 11, Agriculture, forestry, fishing & hunting	n	n	n	n	n	n	n	n	n	n	n	n
SECTOR 21, Mining	n	n	n	n	n	n	n	n	n	n	n	n
Construction	140	1.3	4.4	588	5.6	4.3	69	8.7	7.0	29,913	2.8	4.2
SECTOR 23, Construction	140	1.3	4.4	588	5.6	4.3	69	8.7	7.0	29,913	2.8	4.2
Manufacturing	54	3.9	2.2	847	-3.5	-5.0	203	-14.3	-7.2	29,993	3.8	3.1
Durable Goods	33	4.8	2.8	660	6.3	-5.0	140	5.5	-6.4	29,951	2.9	2.4
Non-Durable Goods	21	2.4	1.2	187	-27.4	-4.9	63	-39.5	-8.9	30,139	6.0	5.8
Service Providing - Private	536	-1.7	1.1	4,312	-3.7	1.2	2,467	-3.6	0.6	26,478	5.5	4.9
Trade, Transportation, and Utilities	165	0.3	2.3	1,409	-1.2	2.2	616	-1.8	2.1	26,732	3.9	4.7
SECTOR 42, Wholesale trade	38	-4.4	6.7	289	-8.5	2.4	132	-7.9	3.2	34,810	6.0	6.5
SECTOR 44-45, Retail trade	105	1.9	1.0	966	-0.1	2.3	460	0.3	1.9	22,532	2.9	3.6
SECTOR 48-49, Transportation & warehousing	n	n	n	n	n	n	n	n	n	n	n	n
SECTOR 22, Utilities	n	n	n	n	n	n	n	n	n	n	n	n
Information	20	-7.1	5.4	97	-4.8	4.5	59	-11.9	5.8	25,075	2.0	6.6
Sector 51, Information	20	-7.1	5.4	97	-4.8	4.5	59	-11.9	5.8	25,075	2.0	6.6
Financial Activities	45	1.1	0.4	228	0.3	-0.2	162	5.2	-1.3	35,911	10.3	7.0
SECTOR 52, Finance and Insurance	29	-2.5	0.7	176	2.5	-0.1	134	5.3	-1.6	36,440	9.0	4.8
SECTOR 53, Real estate & rental & leasing	16	8.5	-	52	-6.5	-0.4	28	4.8	0.2	34,111	14.1	18.6
Professional and Business Services	110	-2.7	1.8	409	-2.6	3.4	203	-9.4	1.7	32,041	8.8	4.1
SECTOR 54, Professional, scientific, & technical svcs.	77	-2.5	2.3	255	-1.6	3.0	127	-5.6	2.6	38,638	8.6	4.7
SECTOR 55, Mgt. of companies & enterprises	n	n	n	n	n	n	n	n	n	n	n	n
SECTOR 56, Administrative & waste services	n	n	n	n	n	n	n	n	n	n	n	n
Education & Health Services	78	4.7	2.4	1,249	2.0	1.5	938	3.0	0.2	30,372	7.9	4.4
SECTOR 61, Educational services	12	4.5	1.8	146	4.0	2.5	92	-0.3	1.9	34,248	10.6	6.4
SECTOR 62, Health care & social assistance	66	4.7	2.5	1,104	1.7	1.4	846	3.3	0.1	29,861	7.4	4.1
Leisure and Hospitality	61	-2.4	0.2	735	-8.9	-0.6	409	-3.4	0.7	13,919	5.7	4.0
SECTOR 71, Arts, entertainment, & recreation	14	25.0	8.8	71	24.6	5.1	32	8.4	14.0	9,471	-19.9	-1.6
SECTOR 72, Accommodation & food services	47	-8.3	-1.6	664	-11.5	-1.1	377	-4.3	-	14,395	8.5	4.6
Other Services	58	-12.1	-3.7	185	-31.9	-4.0	80	-47.1	-6.8	24,932	-18.7	5.3
SECTOR 81, Other services, except public admin.	58	-12.1	-3.7	185	-31.9	-4.0	80	-47.1	-6.8	24,932	-18.7	5.3
Government Ownership	95	4.4	0.6	1,936	0.1	1.9	1,237	2.1	2.6	28,152	0.8	3.1
Federal Government /1	42	-	-	96	-2.6	-0.7	-	-	-	31,780	5.6	2.8
491 Postal service	34	-	-	92	-2.1	-0.1	-	-	-	31,591	5.8	3.0
Other Federal Government	8	-	-2.3	5	-12.9	-10.5	-	-	-	35,624	3.2	1.2
State Government	10	66.7	10.8	463	3.0	3.9	206	9.3	6.7	35,308	4.4	4.5
SECTOR 61, Educational Services	1	-	-	372	-0.4	3.5	195	15.9	8.6	33,675	3.4	4.2
Other State Government	9	80.0	12.5	91	19.5	5.7	11	-45.7	-11.5	41,975	5.2	5.2
Local Government	43	-	-0.5	1,377	-0.7	1.4	1,031	0.7	1.9	25,493	-1.4	2.4
SECTOR 61, Educational Services	17	-	-2.2	1,073	-0.8	1.2	876	-1.0	1.2	27,113	-2.6	2.4
Other Local Government	26	-	0.8	305	-0.4	2.2	155	11.9	6.8	19,793	4.4	2.9

Table 3

Vermont County and Industry Sectors, 2004 total covered

annual average with percent change from 2003 and 1999, units, employment, women, average wage

NAICS Major Industry Group	Reporting			Employment						Average Wage		
	2004	Units		2004	Total		2004	Women		2004	Wage	
		Pct change			Pct change			Pct change			Pct change	
		From 2003 %	Avg/2 99-04 %		From 2003 %	Avg/2 99-04 %		From 2003 %	Avg/2 99-04 %		From 2003 %	Avg/2 99-04 %
19. Orleans - Total Covered	939	1.3	1.6	9,850	2.8	2.1	5,149	2.3	2.5	26,637	2.0	3.9
Private Ownership	828	0.9	1.6	7,900	2.8	2.1	4,059	2.2	2.7	25,316	1.1	3.6
Goods Producing - Private	205	1.7	1.8	2,406	3.6	0.5	689	1.8	2.4	29,463	-4.4	3.1
Natural Resources and Mining	21	-	2.3	146	7.7	4.6	24	27.0	9.0	22,704	3.4	3.6
SECTOR 11, Agriculture, forestry, fishing & hunting	n	n	n	n	n	n	n	n	n	n	n	n
SECTOR 21, Mining	n	n	n	n	n	n	n	n	n	n	n	n
Construction	140	5.3	3.4	652	15.8	6.3	65	3.6	7.3	29,651	8.2	4.1
SECTOR 23, Construction	140	5.3	3.4	652	15.8	6.3	65	3.6	7.3	29,651	8.2	4.1
Manufacturing	44	-7.3	-2.7	1,608	-1.0	-1.7	601	0.9	1.7	30,001	-8.3	2.9
Durable Goods	27	-1.8	-3.5	1,349	-0.7	-1.3	452	3.2	4.2	29,139	-11.0	2.1
Non-Durable Goods	18	-14.6	-1.4	260	-2.3	-3.6	148	-5.6	-4.1	34,478	5.5	6.8
Service Providing - Private	623	0.6	1.5	5,494	2.5	2.9	3,370	2.3	2.8	23,499	4.2	4.2
Trade, Transportation, and Utilities	239	0.8	0.4	1,780	2.5	0.3	783	4.3	-0.6	24,250	6.1	4.1
SECTOR 42, Wholesale trade	n	n	n	n	n	n	n	n	n	n	n	n
SECTOR 44-45, Retail trade	152	2.0	0.3	1,274	3.7	1.3	649	7.0	-0.3	20,800	5.0	4.6
SECTOR 48-49, Transportation & warehousing	n	n	n	n	n	n	n	n	n	n	n	n
SECTOR 22, Utilities	n	n	n	n	n	n	n	n	n	n	n	n
Information	16	8.3	6.3	94	-5.9	-0.5	51	1.0	3.2	33,803	8.1	7.5
Sector 51, Information	16	8.3	6.3	94	-5.9	-0.5	51	1.0	3.2	33,803	8.1	7.5
Financial Activities	57	12.8	5.1	307	12.1	4.6	219	6.4	3.0	30,334	1.7	6.2
SECTOR 52, Finance and Insurance	36	3.6	1.9	240	2.8	1.3	186	1.9	1.0	32,018	3.5	6.8
SECTOR 53, Real estate & rental & leasing	21	33.3	12.3	67	65.9	26.1	34	41.1	22.8	24,334	4.0	7.8
Professional and Business Services	82	-0.9	2.6	278	-3.6	6.6	165	-	8.1	24,884	6.2	1.3
SECTOR 54, Professional, scientific, & technical svcs.	54	-0.9	0.8	164	1.1	3.8	106	3.2	3.9	28,561	3.5	1.6
SECTOR 55, Mgt. of companies & enterprises	-	-	-	-	-	-	-	-	-	-	-	-
SECTOR 56, Administrative & waste services	29	-0.9	6.8	114	-9.8	11.5	59	-5.3	19.8	19,605	8.4	2.7
Education & Health Services	70	-1.7	3.6	1,868	1.2	5.4	1,489	0.8	4.7	25,614	1.1	3.2
SECTOR 61, Educational services	10	8.1	4.6	181	-9.2	3.0	119	-10.7	2.0	17,857	7.8	3.0
SECTOR 62, Health care & social assistance	60	-3.2	3.5	1,687	2.5	5.6	1,371	1.9	5.0	26,449	0.2	3.1
Leisure and Hospitality	81	2.9	2.5	917	7.6	3.7	541	5.0	3.0	14,677	11.4	5.6
SECTOR 71, Arts, entertainment, & recreation	15	7.0	1.7	88	36.1	7.0	35	39.6	4.3	25,496	24.1	13.1
SECTOR 72, Accommodation & food services	66	1.9	2.6	829	5.2	3.4	506	3.3	2.9	13,529	7.7	4.3
Other Services	77	-7.5	-1.9	250	-4.9	-1.3	122	-7.2	-2.5	20,910	7.7	6.6
SECTOR 81, Other services, except public admin.	77	-7.5	-1.9	250	-4.9	-1.3	122	-7.2	-2.5	20,910	7.7	6.6
Government Ownership	111	5.0	1.7	1,950	2.8	2.2	1,090	2.9	1.5	31,987	5.1	5.1
Federal Government /1	41	3.1	2.6	247	5.0	3.8	-	-	-	51,909	7.5	6.0
491 Postal service	25	-	1.7	83	-0.9	-2.3	-	-	-	37,760	7.0	5.4
Other Federal Government	16	8.5	4.2	164	8.3	8.0	-	-	-	59,103	6.4	4.6
State Government	15	36.4	6.4	357	7.6	1.7	135	0.7	-0.9	38,213	-3.7	5.4
SECTOR 61, Educational Services	2	-	-	39	-0.2	-3.4	27	22.5	-0.2	18,438	11.2	16.0
Other State Government	13	44.4	7.6	319	8.6	2.4	108	-3.6	-1.1	40,608	-4.9	4.4
Local Government	55	-	-	1,346	1.2	2.1	955	3.2	1.9	26,683	6.8	4.4
SECTOR 61, Educational Services	24	-	-	1,107	1.4	2.1	877	2.0	1.6	28,375	7.4	4.8
Other Local Government	31	-	-	239	0.6	2.2	78	18.3	5.1	18,838	2.6	2.5

Table 3

Vermont County and Industry Sectors, 2004 total covered

annual average with percent change from 2003 and 1999, units, employment, women, average wage

NAICS Major Industry Group	Reporting			Employment						Average Wage		
	2004	Units		2004	Total		2004	Women		2004	Wage	
		Pct change			Pct change			Pct change			Pct change	
		From 2003 %	Avg/2 99-04 %		From 2003 %	Avg/2 99-04 %		From 2003 %	Avg/2 99-04 %		From 2003 %	Avg/2 99-04 %
21. Rutland - Total Covered	2,473	1.0	0.5	29,318	2.7	0.5	14,131	2.4	1.0	31,445	4.6	4.5
Private Ownership	2,303	1.0	0.5	24,863	2.8	0.2	11,671	2.5	0.8	31,245	4.8	4.7
Goods Producing - Private	492	3.0	2.3	6,052	3.3	-0.8	1,244	2.6	-1.4	39,695	5.0	4.3
Natural Resources and Mining	49	-2.5	4.3	500	6.7	-1.7	81	9.5	0.2	36,815	0.1	2.2
SECTOR 11, Agriculture, forestry, fishing & hunting	21	-3.4	7.7	69	17.9	5.7	21	26.2	13.3	17,725	3.9	4.2
SECTOR 21, Mining	28	-1.8	2.1	431	5.1	-2.7	61	4.8	-2.7	39,861	0.7	2.7
Construction	320	6.1	3.6	1,739	6.4	5.4	165	4.4	4.1	32,730	5.5	3.1
SECTOR 23, Construction	320	6.1	3.6	1,739	6.4	5.4	165	4.4	4.1	32,730	5.5	3.1
Manufacturing	124	-2.2	-1.3	3,814	1.6	-2.9	998	1.7	-2.2	43,249	5.7	5.4
Durable Goods	82	0.6	-0.6	3,305	1.9	-3.0	830	3.1	-2.3	45,000	5.3	5.5
Non-Durable Goods	43	-7.1	-2.5	508	-0.2	-2.3	168	-4.5	-1.8	31,859	8.9	4.7
Service Providing - Private	1,810	0.5	0.1	18,811	2.6	0.6	10,427	2.5	1.1	28,526	4.7	5.0
Trade, Transportation, and Utilities	608	0.6	-0.9	6,434	2.8	1.0	2,890	3.9	1.6	28,501	1.3	4.0
SECTOR 42, Wholesale trade	116	0.9	0.4	828	-8.3	-2.0	167	-12.6	-2.5	36,762	6.7	3.3
SECTOR 44-45, Retail trade	432	-	-1.4	4,377	1.7	1.1	2,231	1.0	0.8	22,737	3.5	4.9
SECTOR 48-49, Transportation & warehousing	56	4.7	0.3	746	31.5	6.1	326	53.4	14.4	25,615	-21.1	-0.4
SECTOR 22, Utilities	5	-	-1.0	483	-0.9	-	167	-2.3	-0.6	71,026	8.0	6.0
Information	39	6.2	2.8	455	0.2	-0.4	198	-4.3	-0.5	31,429	-0.4	3.4
Sector 51, Information	39	6.2	2.8	455	0.2	-0.4	198	-4.3	-0.5	31,429	-0.4	3.4
Financial Activities	163	4.5	-0.6	961	6.9	-	585	2.0	1.2	37,931	10.9	5.8
SECTOR 52, Finance and Insurance	82	6.1	-1.8	618	10.0	1.1	429	2.6	2.1	44,705	12.4	7.0
SECTOR 53, Real estate & rental & leasing	81	2.8	0.6	343	1.9	-1.9	157	0.5	-1.0	25,740	3.2	1.8
Professional and Business Services	331	0.6	1.9	1,998	3.9	0.9	963	2.2	1.5	39,061	9.6	7.1
SECTOR 54, Professional, scientific, & technical svcs.	213	4.5	2.8	1,010	0.6	-0.9	559	-3.5	-0.1	39,910	3.3	4.9
SECTOR 55, Mgt. of companies & enterprises	n	n	n	n	n	n	n	n	n	n	n	n
SECTOR 56, Administrative & waste services	n	n	n	n	n	n	n	n	n	n	n	n
Education & Health Services	200	-0.6	2.0	4,267	2.8	2.3	3,330	1.8	1.7	34,250	6.1	5.2
SECTOR 61, Educational services	20	1.3	3.0	355	5.1	2.2	210	3.7	1.8	26,263	1.9	2.6
SECTOR 62, Health care & social assistance	180	-0.8	1.9	3,912	2.5	2.3	3,120	1.7	1.7	34,974	6.5	5.4
Leisure and Hospitality	260	-1.2	0.2	3,796	1.5	-1.4	2,045	2.0	-0.7	15,652	1.6	2.9
SECTOR 71, Arts, entertainment, & recreation	40	5.2	2.1	259	12.6	5.4	98	7.7	4.2	12,921	-8.4	-2.2
SECTOR 72, Accommodation & food services	220	-2.3	-0.2	3,536	0.7	-1.8	1,947	1.8	-0.9	15,852	2.4	3.3
Other Services	210	-0.9	-1.4	901	-0.5	-0.6	416	6.7	1.1	20,986	3.2	3.1
SECTOR 81, Other services, except public admin.	210	-0.9	-1.4	901	-0.5	-0.6	416	6.7	1.1	20,986	3.2	3.1
Government Ownership	170	1.3	0.8	4,455	2.1	1.7	2,460	1.9	1.9	32,559	3.3	3.8
Federal Government /1	61	-4.3	0.2	377	-2.3	-0.2	-	-	-	47,289	5.7	4.2
491 Postal service	44	-4.3	0.7	199	-2.2	-1.1	-	-	-	40,924	6.8	4.4
Other Federal Government	17	-4.2	-1.1	178	-2.5	0.9	-	-	-	54,388	4.8	3.7
State Government	29	20.8	3.9	1,022	4.9	2.4	435	20.7	4.4	38,235	2.5	5.0
SECTOR 61, Educational Services	3	-	-	357	0.1	1.8	199	29.7	8.2	30,828	4.0	4.3
Other State Government	26	23.8	4.4	665	7.6	2.7	236	14.0	1.6	42,214	1.1	5.2
Local Government	80	-	0.4	3,055	1.8	1.7	2,026	-1.4	1.4	28,841	3.3	3.3
SECTOR 61, Educational Services	31	-	-	2,251	1.3	1.6	1,755	-2.1	1.1	30,010	4.0	3.3
Other Local Government	49	-	0.6	805	3.2	2.1	271	3.9	3.6	25,571	1.2	3.2

Table 3

Vermont County and Industry Sectors, 2004 total covered

annual average with percent change from 2003 and 1999, units, employment, women, average wage

NAICS Major Industry Group	Reporting			Employment						Average Wage		
	2004	Units		2004	Total		2004	Women		2004	Wage	
		Pct change			Pct change			Pct change			Pct change	
		From 2003 %	Avg/2 99-04 %		From 2003 %	Avg/2 99-04 %		From 2003 %	Avg/2 99-04 %		From 2003 %	Avg/2 99-04 %
23. Washington - Total Covered	2,526	1.8	0.7	32,294	1.2	0.7	16,035	0.6	0.8	33,331	4.5	4.4
Private Ownership	2,287	1.3	0.6	24,327	1.5	0.4	11,807	1.8	0.8	31,666	3.6	4.2
Goods Producing - Private	431	4.0	1.8	4,521	4.1	-1.7	1,083	2.3	-1.0	35,298	3.6	2.8
Natural Resources and Mining	26	16.9	4.4	237	2.0	0.8	41	22.7	5.2	29,513	-13.4	-1.5
SECTOR 11, Agriculture, forestry, fishing & hunting	18	19.7	5.4	98	3.9	3.8	34	27.6	6.5	21,107	0.5	1.4
SECTOR 21, Mining	8	10.7	2.1	139	0.7	-1.0	7	3.7	-	35,459	-17.6	-1.6
Construction	260	7.3	4.8	1,347	10.0	3.1	158	2.6	5.1	32,579	5.2	4.0
SECTOR 23, Construction	260	7.3	4.8	1,347	10.0	3.1	158	2.6	5.1	32,579	5.2	4.0
Manufacturing	146	-3.3	-2.7	2,937	1.8	-3.6	885	1.4	-2.1	37,013	4.7	3.0
Durable Goods	102	-5.3	-1.8	1,277	-1.3	-8.3	255	-5.7	-8.4	42,211	9.9	4.1
Non-Durable Goods	44	1.8	-4.8	1,660	4.3	1.3	630	4.7	1.3	33,015	0.3	2.9
Service Providing - Private	1,856	0.7	0.3	19,806	0.9	0.9	10,724	1.8	1.0	30,836	3.6	4.7
Trade, Transportation, and Utilities	545	0.7	-1.0	5,586	0.1	0.2	2,188	1.4	0.2	27,859	5.1	4.2
SECTOR 42, Wholesale trade	123	4.9	2.5	927	-0.9	-0.1	297	2.2	-1.0	41,845	5.3	4.2
SECTOR 44-45, Retail trade	378	-0.7	-1.9	4,062	0.5	0.4	1,785	2.0	0.6	23,420	4.6	4.4
SECTOR 48-49, Transportation & warehousing	38	1.3	-1.9	506	-1.8	0.5	85	-10.8	-2.2	34,065	10.0	5.5
SECTOR 22, Utilities	6	-	-	92	3.1	-5.4	22	-3.3	0.5	48,834	1.1	1.3
Information	55	4.3	1.8	611	-8.8	-1.4	263	-5.2	-1.6	36,426	6.3	2.7
Sector 51, Information	55	4.3	1.8	611	-8.8	-1.4	263	-5.2	-1.6	36,426	6.3	2.7
Financial Activities	170	-2.7	0.7	2,524	-3.4	0.3	1,642	-2.2	0.2	49,402	0.7	4.4
SECTOR 52, Finance and Insurance	104	-5.7	0.4	2,202	-5.7	-0.2	1,507	-3.9	-	53,212	2.6	4.7
SECTOR 53, Real estate & rental & leasing	66	2.3	1.0	322	16.1	3.4	134	22.9	2.7	23,374	-7.7	3.8
Professional and Business Services	383	2.8	2.1	1,850	1.8	0.5	808	-2.2	-0.4	39,324	6.6	6.6
SECTOR 54, Professional, scientific, & technical svcs.	284	3.6	2.5	1,215	3.5	4.0	557	-	2.6	47,026	6.0	5.3
SECTOR 55, Mgt. of companies & enterprises	n	n	n	n	n	n	n	n	n	n	n	n
SECTOR 56, Administrative & waste services	n	n	n	n	n	n	n	n	n	n	n	n
Education & Health Services	243	2.7	0.8	5,080	4.1	3.0	3,611	4.4	2.2	30,485	2.1	4.4
SECTOR 61, Educational services	39	3.3	5.8	1,261	3.5	2.9	602	-0.2	-1.0	31,808	2.3	3.8
SECTOR 62, Health care & social assistance	204	2.6	-	3,819	4.3	3.0	3,009	5.4	3.0	30,048	2.1	4.6
Leisure and Hospitality	201	-1.0	0.4	2,825	0.1	-0.4	1,496	2.4	1.1	14,290	4.2	3.8
SECTOR 71, Arts, entertainment, & recreation	34	-4.3	2.6	321	-9.9	3.7	162	-7.0	6.0	17,624	16.4	7.3
SECTOR 72, Accommodation & food services	167	-0.3	-	2,505	1.6	-0.9	1,334	3.7	0.6	13,863	2.6	3.2
Other Services	260	-1.0	-0.6	1,330	6.7	1.8	718	5.6	2.1	30,227	10.6	6.8
SECTOR 81, Other services, except public admin.	260	-1.0	-0.6	1,330	6.7	1.8	718	5.6	2.1	30,227	10.6	6.8
Government Ownership	238	6.6	1.9	7,967	0.2	1.8	4,228	-2.6	0.5	38,415	6.8	5.0
Federal Government /1	61	-0.8	0.9	293	-5.6	-1.4	-	-	-	49,806	9.4	4.7
491 Postal service	35	-1.4	0.1	162	-5.7	-1.9	-	-	-	42,908	13.0	4.4
Other Federal Government	26	-	2.0	131	-5.5	-0.8	-	-	-	58,322	6.3	4.8
State Government	89	20.3	4.0	4,975	2.4	2.6	2,386	-1.5	0.5	42,010	6.1	5.4
SECTOR 61, Educational Services	4	-	-	118	1.6	-3.4	80	2.9	-3.3	37,523	4.7	10.7
Other State Government	85	21.4	4.3	4,858	2.4	2.7	2,306	-1.7	0.6	42,119	6.1	5.2
Local Government	88	0.3	0.6	2,699	-3.0	0.9	1,843	-3.9	0.6	30,551	6.9	3.9
SECTOR 61, Educational Services	22	-	-	1,936	-3.8	0.2	1,543	-4.1	0.1	31,017	7.1	3.8
Other Local Government	66	0.4	0.9	763	-1.0	2.8	300	-2.8	4.1	29,369	6.6	4.2

Table 3

Vermont County and Industry Sectors, 2004 total covered

annual average with percent change from 2003 and 1999, units, employment, women, average wage

NAICS Major Industry Group	Reporting			Employment						Average Wage		
	2004	Units		2004	Total		2004	Women		2004	Wage	
		Pct change			Pct change			Pct change			Pct change	
		From 2003 %	Avg/2 99-04 %		From 2003 %	Avg/2 99-04 %		From 2003 %	Avg/2 99-04 %		From 2003 %	Avg/2 99-04 %
25. Windham - Total Covered	1,928	0.7	0.4	22,978	0.4	-1.0	11,394	1.4	0.3	32,919	3.2	4.2
Private Ownership	1,795	0.4	0.4	19,985	-0.4	-1.6	9,590	0.9	-0.2	33,352	3.4	4.4
Goods Producing - Private	399	3.4	0.9	3,867	1.1	-4.1	1,091	1.6	-5.0	37,790	3.1	4.0
Natural Resources and Mining	34	-8.8	-2.2	277	-1.1	-5.8	132	1.9	-6.6	25,854	-0.5	3.6
SECTOR 11, Agriculture, forestry, fishing & hunting	n	n	n	n	n	n	n	n	n	n	n	n
SECTOR 21, Mining	n	n	n	n	n	n	n	n	n	n	n	n
Construction	249	6.1	2.3	1,103	6.8	3.4	144	0.2	1.8	33,684	8.6	4.7
SECTOR 23, Construction	249	6.1	2.3	1,103	6.8	3.4	144	0.2	1.8	33,684	8.6	4.7
Manufacturing	116	1.8	-0.8	2,488	-1.1	-6.4	816	1.8	-5.7	40,939	2.0	4.3
Durable Goods	79	1.6	0.4	1,717	2.5	-2.2	583	5.5	-0.2	40,152	7.8	5.1
Non-Durable Goods	37	2.1	-3.2	771	-8.2	-13.0	232	-6.4	-14.4	42,691	-6.9	3.7
Service Providing - Private	1,397	-0.4	0.2	16,118	-0.7	-0.9	8,499	0.9	0.5	32,288	3.4	4.6
Trade, Transportation, and Utilities	404	-0.2	-1.0	5,468	-1.7	-0.8	2,121	2.7	1.8	39,358	-1.4	4.7
SECTOR 42, Wholesale trade	78	13.0	0.3	1,586	-1.9	0.1	469	-11.4	-0.5	43,863	-19.6	2.1
SECTOR 44-45, Retail trade	280	-0.9	-0.4	2,809	-0.3	-0.5	1,438	7.1	2.7	23,559	1.8	4.3
SECTOR 48-49, Transportation & warehousing	n	n	n	n	n	n	n	n	n	n	n	n
SECTOR 22, Utilities	n	n	n	n	n	n	n	n	n	n	n	n
Information	35	-10.3	-1.4	339	-6.7	-0.2	131	-19.0	2.1	35,778	7.1	6.4
SECTOR 51, Information	35	-10.3	-1.4	339	-6.7	-0.2	131	-19.0	2.1	35,778	7.1	6.4
Financial Activities	137	-1.3	0.9	933	1.9	-3.7	581	0.2	-2.8	41,746	10.4	6.0
SECTOR 52, Finance and Insurance	58	-2.1	-2.4	643	2.0	-6.2	453	-0.2	-4.4	45,533	9.5	6.1
SECTOR 53, Real estate & rental & leasing	79	-0.6	3.9	289	1.5	3.5	128	1.6	4.6	33,326	13.1	9.3
Professional and Business Services	250	0.5	1.4	1,241	3.6	-4.0	546	1.8	-2.8	40,485	14.6	3.7
SECTOR 54, Professional, scientific, & technical svcs.	n	n	n	n	n	n	n	n	n	n	n	n
SECTOR 55, Mgt. of companies & enterprises	n	n	n	n	n	n	n	n	n	n	n	n
SECTOR 56, Administrative & waste services	94	1.9	2.5	685	10.1	-3.7	235	2.1	-3.3	37,669	32.2	7.0
Education & Health Services	177	-2.6	1.0	4,008	1.9	0.9	2,913	1.5	1.0	32,497	4.5	5.4
SECTOR 61, Educational services	30	-0.8	2.0	1,469	2.6	0.5	923	0.3	0.6	33,162	4.7	5.5
SECTOR 62, Health care & social assistance	147	-3.0	0.8	2,539	1.5	1.2	1,990	2.1	1.2	32,112	4.4	5.4
Leisure and Hospitality	238	0.8	0.5	3,437	-4.0	-1.3	1,846	-0.8	0.3	17,098	3.0	3.7
SECTOR 71, Arts, entertainment, & recreation	34	1.5	2.4	162	1.9	-0.5	89	24.6	3.3	21,885	13.7	12.9
SECTOR 72, Accommodation & food services	204	0.7	0.2	3,275	-4.3	-1.3	1,758	-1.8	0.1	16,861	2.3	3.3
Other Services	157	1.1	0.1	692	2.0	0.1	362	2.1	0.5	21,493	3.1	3.2
SECTOR 81, Other services, except public admin.	157	1.1	0.1	692	2.0	0.1	362	2.1	0.5	21,493	3.1	3.2
Government Ownership	133	5.6	1.3	2,992	6.3	3.3	1,804	4.1	3.7	30,027	2.8	3.2
Federal Government /1	47	-	0.4	179	-2.4	-1.2	-	-	-	44,901	11.7	4.3
491 Postal service	35	-	0.6	131	-5.7	-2.3	-	-	-	42,096	13.4	4.5
Other Federal Government	12	-	-	49	7.8	2.0	-	-	-	52,455	5.7	3.1
State Government	16	77.8	12.2	278	59.2	9.7	90	20.5	1.3	37,413	9.7	8.5
SECTOR 61, Educational Services	2	-	-	53	0.2	-3.2	36	18.2	-2.3	18,970	2.9	12.4
Other State Government	14	100.0	14.9	226	84.5	14.9	54	22.0	4.2	41,719	2.1	4.9
Local Government	70	-	0.1	2,535	3.2	3.1	1,714	3.4	3.8	28,165	0.5	2.5
SECTOR 61, Educational Services	25	-	-0.4	1,788	4.0	3.5	1,371	3.5	3.7	28,614	-	1.7
Other Local Government	45	-	0.5	747	1.3	2.0	343	3.2	4.3	27,090	1.5	4.6

Table 3

Vermont County and Industry Sectors, 2004 total covered

annual average with percent change from 2003 and 1999, units, employment, women, average wage

NAICS Major Industry Group	Reporting			Employment						Average Wage		
	2004	Units		2004	Total		2004	Women		2004	Wage	
		Pct change			Pct change			Pct change			Pct change	
		From 2003 %	Avg/2 99-04 %		From 2003 %	Avg/2 99-04 %		From 2003 %	Avg/2 99-04 %		From 2003 %	Avg/2 99-04 %
27. Windsor - Total Covered	2,405	0.2	0.4	23,610	1.5	0.1	11,210	1.0	1.2	31,445	4.5	4.0
Private Ownership	2,216	-0.2	0.4	18,851	1.9	0.1	9,052	1.1	1.1	29,570	3.9	3.5
Goods Producing - Private	532	-0.6	1.3	4,077	4.0	-3.2	964	2.1	-2.8	34,112	2.0	2.1
Natural Resources and Mining	48	-5.0	5.5	255	-15.3	-0.1	78	-5.8	1.1	27,303	-6.7	2.1
SECTOR 11, Agriculture, forestry, fishing & hunting	44	-1.1	7.5	202	-4.1	5.6	74	-1.0	2.3	20,846	6.6	8.4
SECTOR 21, Mining	4	-33.3	-7.8	54	-41.1	-12.1	4	-51.6	-13.5	51,594	-0.2	4.8
Construction	349	0.9	2.8	1,595	11.0	4.2	196	7.6	7.2	32,536	4.4	3.5
SECTOR 23, Construction	349	0.9	2.8	1,595	11.0	4.2	196	7.6	7.2	32,536	4.4	3.5
Manufacturing	135	-2.7	-3.0	2,226	2.0	-7.3	691	1.6	-5.1	36,022	1.4	2.1
Durable Goods	95	-3.3	-2.9	1,299	1.6	-9.9	356	2.1	-4.6	36,683	3.0	2.2
Non-Durable Goods	41	-1.2	-3.3	927	2.6	-2.8	334	1.1	-5.6	35,095	-1.0	2.1
Service Providing - Private	1,684	-	0.1	14,774	1.4	1.1	8,088	1.0	1.6	28,317	4.4	4.3
Trade, Transportation, and Utilities	451	-1.2	-1.4	4,216	2.4	1.5	1,668	1.1	0.7	28,115	4.6	4.2
SECTOR 42, Wholesale trade	87	-1.1	1.0	694	2.4	9.5	229	11.6	11.9	40,635	4.8	3.5
SECTOR 44-45, Retail trade	314	-1.3	-2.2	2,845	1.1	-0.6	1,292	-1.1	-1.5	23,666	4.2	3.5
SECTOR 48-49, Transportation & warehousing	44	0.6	-0.6	597	10.4	5.1	138	8.1	13.2	30,930	7.0	3.2
SECTOR 22, Utilities	7	-9.4	0.7	80	-7.1	0.8	10	-4.8	1.0	56,728	-0.2	2.0
Information	50	-6.6	-2.3	626	-9.2	-3.0	340	-10.2	-5.1	43,260	9.6	6.3
Sector 51, Information	50	-6.6	-2.3	626	-9.2	-3.0	340	-10.2	-5.1	43,260	9.6	6.3
Financial Activities	166	-2.2	-0.1	825	3.5	3.1	551	11.5	3.9	39,395	0.3	3.3
SECTOR 52, Finance and Insurance	86	-3.4	-0.3	504	7.4	2.3	391	16.6	3.5	45,692	-3.8	2.7
SECTOR 53, Real estate & rental & leasing	81	-0.9	-	321	-2.1	4.5	161	0.9	5.0	29,525	7.2	5.8
Professional and Business Services	356	3.9	2.7	1,763	11.4	1.4	788	10.2	2.7	37,974	1.0	3.2
SECTOR 54, Professional, scientific, & technical svcs.	242	3.8	3.2	1,203	9.8	1.7	605	8.4	4.1	44,271	3.1	2.4
SECTOR 55, Mgt. of companies & enterprises	n	n	n	n	n	n	n	n	n	n	n	n
SECTOR 56, Administrative & waste services	n	n	n	n	n	n	n	n	n	n	n	n
Education & Health Services	196	-2.0	3.7	2,906	-3.8	1.9	2,322	-3.7	1.8	31,456	7.6	5.2
SECTOR 61, Educational services	25	-	4.1	314	0.5	4.3	193	-2.0	4.9	37,023	7.3	1.8
SECTOR 62, Health care & social assistance	172	-2.3	3.7	2,593	-4.3	1.6	2,129	-3.9	1.6	30,783	7.6	5.7
Leisure and Hospitality	242	2.9	1.4	3,556	2.6	0.3	1,954	2.5	2.2	17,269	6.2	4.1
SECTOR 71, Arts, entertainment, & recreation	43	13.1	6.2	400	4.0	4.7	230	9.3	5.5	19,407	6.1	2.6
SECTOR 72, Accommodation & food services	199	0.9	0.6	3,156	2.5	-0.1	1,724	1.7	1.8	16,998	6.2	4.2
Other Services	223	-1.8	-3.3	882	-1.7	1.3	467	1.5	2.4	23,206	-5.2	4.0
SECTOR 81, Other services, except public admin.	223	-1.8	-3.3	882	-1.7	1.3	467	1.5	2.4	23,206	-5.2	4.0
Government Ownership	189	4.3	0.6	4,760	-0.2	0.3	2,158	0.6	1.6	38,873	7.0	5.6
Federal Government /1	68	-0.4	-0.2	1,331	1.1	-0.8	-	-	-	55,238	8.6	7.7
491 Postal service	54	1.4	0.8	503	-3.4	-4.4	-	-	-	50,440	6.0	5.1
Other Federal Government	14	-6.7	-3.5	828	4.1	1.9	-	-	-	58,150	9.7	9.5
State Government	34	30.8	4.7	639	1.7	1.1	290	12.3	2.3	39,233	3.2	6.3
SECTOR 61, Educational Services	3	-	-5.6	80	0.3	-4.2	43	33.6	1.5	18,486	6.4	15.3
Other State Government	31	34.8	6.2	560	1.9	2.0	247	9.3	2.5	42,186	2.9	5.2
Local Government	87	-	-0.2	2,790	-1.2	0.7	1,868	-1.0	1.5	30,985	6.2	4.1
SECTOR 61, Educational Services	27	-	-	2,006	-2.0	0.5	1,584	-2.2	1.6	31,554	6.8	4.0
Other Local Government	60	-	-0.3	784	1.0	1.4	284	6.0	1.3	29,528	4.5	4.4

Table 3

Vermont County and Industry Sectors, 2004 total covered

annual average with percent change from 2003 and 1999, units, employment, women, average wage

NAICS Major Industry Group	Reporting			Employment						Average Wage		
	2004	Units		2004	Total		2004	Women		2004	Wage	
		Pct change			Pct change			Pct change			Pct change	
		From 2003 %	Avg/2 99-04 %		From 2003 %	Avg/2 99-04 %		From 2003 %	Avg/2 99-04 %		From 2003 %	Avg/2 99-04 %
99. Other /3 - Total Covered	936	6.9	7.3	5,616	13.6	13.4	3,223	17.8	24.3	29,787	1.9	-
Private Ownership	934	7.2	7.3	5,610	16.9	14.4	3,223	19.7	25.5	29,766	3.1	0.1
Goods Producing - Private	88	18.9	7.8	498	-0.6	3.1	25	-43.5	-12.9	38,541	-8.5	5.7
Natural Resources and Mining	n	n	n	n	n	n	n	n	n	n	n	n
SECTOR 11, Agriculture, forestry, fishing & hunting	n	n	n	n	n	n	n	n	n	n	n	n
SECTOR 21, Mining	-	-	-	-	-	-	-	-	-	-	-	-
Construction	73	20.1	9.9	439	17.7	2.4	20	-35.5	-12.3	35,526	-6.0	4.1
SECTOR 23, Construction	73	20.1	9.9	439	17.7	2.4	20	-35.5	-12.3	35,526	-6.0	4.1
Manufacturing	n	n	n	n	n	n	n	n	n	n	n	n
Durable Goods	n	n	n	n	n	n	n	n	n	n	n	n
Non-Durable Goods	n	n	n	n	n	n	n	n	n	n	n	n
Service Providing - Private	845	6.1	7.3	5,112	18.9	16.0	3,198	20.8	26.5	28,911	5.8	-0.5
Trade, Transportation, and Utilities	363	5.6	4.9	880	5.5	-0.3	248	-7.8	-1.7	63,688	12.2	9.0
SECTOR 42, Wholesale trade	287	7.4	6.5	707	10.5	5.7	196	-4.6	6.1	68,866	10.3	6.1
SECTOR 44-45, Retail trade	57	-3.8	-2.4	131	-18.2	-16.6	47	-23.7	-17.5	43,852	15.4	10.3
SECTOR 48-49, Transportation & warehousing	19	10.1	9.6	43	21.0	3.6	5	150.0	20.1	38,610	1.0	9.1
SECTOR 22, Utilities	-	-	-	-	-	-	-	-	-	-	-	-
Information	n	n	n	n	n	n	n	n	n	n	n	n
Sector 51, Information	n	n	n	n	n	n	n	n	n	n	n	n
Financial Activities	47	3.9	8.4	121	-4.5	9.2	45	-20.1	25.7	50,714	-0.5	6.7
SECTOR 52, Finance and Insurance	n	n	n	n	n	n	n	n	n	n	n	n
SECTOR 53, Real estate & rental & leasing	n	n	n	n	n	n	n	n	n	n	n	n
Professional and Business Services	313	7.2	9.9	1,101	18.9	0.7	428	13.2	-1.5	45,148	18.8	15.6
SECTOR 54, Professional, scientific, & technical svcs.	n	n	n	n	n	n	n	n	n	n	n	n
SECTOR 55, Mgt. of companies & enterprises	n	n	n	n	n	n	n	n	n	n	n	n
SECTOR 56, Administrative & waste services	96	-11.9	3.1	566	5.7	-5.5	235	-1.2	-9.4	34,462	11.9	19.2
Education & Health Services	35	3.0	11.0	2,720	22.1	78.4	2,368	24.1	81.6	10,376	7.3	-12.1
SECTOR 61, Educational services	13	-13.8	11.5	20	-23.4	6.6	11	-21.4	8.0	20,362	17.0	29.4
SECTOR 62, Health care & social assistance	22	15.8	10.7	2,700	22.6	81.9	2,357	24.4	83.8	10,302	7.5	-13.5
Leisure and Hospitality	13	10.4	-3.1	56	136.9	-11.0	10	11.4	-25.5	33,217	-39.0	8.1
SECTOR 71, Arts, entertainment, & recreation	n	n	n	n	n	n	n	n	n	n	n	n
SECTOR 72, Accommodation & food services	n	n	n	n	n	n	n	n	n	n	n	n
Other Services	n	n	n	n	n	n	n	n	n	n	n	n
SECTOR 81, Other services, except public admin.	n	n	n	n	n	n	n	n	n	n	n	n
Government Ownership	2	-50.0	-12.9	6	-95.6	-45.4	-	-100.0	-100.0	48,934	19.3	8.6
Federal Government /1	2	-	-	6	76.8	32.0	-	-	-	48,934	-21.1	23.6
491 Postal service	1	-	-	2	52.7	8.8	-	-	-	18,156	-5.6	1.4
Other Federal Government	1	-	-	4	95.9	-	-	-	-	67,925	-29.1	-
State Government	-	-100.0	-100.0	-	-100.0	-100.0	-	-100.0	-100.0	-	-100.0	-100.0
SECTOR 61, Educational Services	-	-	-	-	-	-	-	-	-	-	-	-
Other State Government	-	-100.0	-100.0	-	-100.0	-100.0	-	-100.0	-100.0	-	-100.0	-100.0
Local Government	-	-	-	-	-	-	-	-	-	-	-	-
SECTOR 61, Educational Services	-	-	-	-	-	-	-	-	-	-	-	-
Other Local Government	-	-	-	-	-	-	-	-	-	-	-	-

/1Female employment is not collected by Federal government

n=Data is confidential

na=Data is unavailable

/2 Avg is compounded annual average percent change

-|=Zero reporting units, employment, or wages

/3 Location of business is statewide, countrywide.

Note: detail may not add to totals due to rounding.

Note: Changes may be influenced by reclassification of specific firms and or improved multiple worksite information.

Table 4

Vermont Size Class By NAICS Based Industry, 2004, private ownership
annual average establishments and annual average employment

Sector	Total	Size of establishments								
		4 or fewer workers	5 to 9 workers	10 to 19 workers	20 to 49 workers	50 to 99 workers	100 to 249 workers	250 to 499 workers	500 to 999 workers	1,000 plus workers
Total Private										
Annual average establishments	22,566	13,121	4,386	2,758	1,594	396	235	48	21	8
% of total	100.0	58.1	19.4	12.2	7.1	1.8	1.0	0.2	0.1	0.0
Annual average employment	248,094	27,642	29,804	37,513	48,185	27,262	34,404	16,164	12,701	14,419
% of total	100.0	11.1	12.0	15.1	19.4	11.0	13.9	6.5	5.1	5.8
11. Agriculture, Forestry, Fishing and Hunting										
Annual average establishments	366	211	94	50	10	1	---	---	---	---
% of total	100.0	57.6	25.7	13.7	2.7	0.3	---	---	---	---
Annual average employment	2,301	n	671	667	281	n	---	---	---	---
% of total	100.0	n	29.1	29.0	12.2	n	---	---	---	---
21. Mining										
Annual average establishments	64	34	15	7	5	2	1	---	---	---
% of total	100.0	52.8	23.6	11.0	7.9	3.1	1.6	---	---	---
Annual average employment	762	76	103	169	140	n	n	---	---	---
% of total	100.0	9.9	13.5	22.2	18.4	n	n	---	---	---
22. Utilities										
Annual average establishments	50	17	10	6	10	2	3	2	---	---
% of total	100.0	33.3	19.2	12.6	20.7	4.0	6.1	4.0	---	---
Annual average employment	1,714	36	61	83	271	n	353	n	---	---
% of total	100.0	2.1	3.5	4.8	15.8	n	20.6	n	---	---
23. Construction										
Annual average establishments	3,032	2,231	462	229	84	18	8	---	---	---
% of total	100.0	73.6	15.2	7.6	2.8	0.6	0.3	---	---	---
Annual average employment	16,674	4,794	3,332	3,382	2,849	1,252	1,065	---	---	---
% of total	100.0	28.8	20.0	20.3	17.1	7.5	6.4	---	---	---
31-33. Manufacturing										
Annual average establishments	1,208	494	225	172	165	71	65	11	4	1
% of total	100.0	40.9	18.6	14.2	13.7	5.9	5.4	0.9	0.3	0.1
Annual average employment	36,978	n	1,532	2,373	5,125	5,035	9,612	3,824	2,528	n
% of total	100.0	n	4.1	6.4	13.9	13.6	26.0	10.3	6.8	n
42. Wholesale Trade										
Annual average establishments	1,336	899	203	124	87	14	9	---	---	1
% of total	100.0	67.2	15.2	9.3	6.5	1.0	0.7	---	---	0.1
Annual average employment	10,198	n	1,352	1,725	2,599	915	1,259	---	---	n
% of total	100.0	n	13.3	16.9	25.5	9.0	12.3	---	---	n
44-45. Retail Trade										
Annual average establishments	3,669	1,601	1,012	662	287	60	45	3	---	---
% of total	100.0	43.6	27.6	18.0	7.8	1.6	1.2	0.1	---	---
Annual average employment	40,042	3,933	7,057	8,903	8,877	4,076	6,347	850	---	---
% of total	100.0	9.8	17.6	22.2	22.2	10.2	15.9	2.1	---	---
48-49. Transportation and Warehousing										
Annual average establishments	555	313	86	63	60	28	4	1	---	---
% of total	100.0	56.3	15.5	11.4	10.8	5.0	0.7	0.2	---	---
Annual average employment	6,759	n	613	867	1,767	2,002	612	n	---	---
% of total	100.0	n	9.1	12.8	26.1	29.6	9.1	n	---	---
51. Information										
Annual average establishments	515	271	91	77	53	14	6	3	---	---
% of total	100.0	52.6	17.7	14.9	10.3	2.7	1.2	0.6	---	---
Annual average employment	6,363	492	607	1,068	1,533	942	905	815	---	---
% of total	100.0	7.7	9.5	16.8	24.1	14.8	14.2	12.8	---	---

See footnotes at end of table.

Vermont Size Class By NAICS Based Industry, 2004, private ownership
annual average establishments and annual average employment

Sector	Total	Size of establishments								
		4 or fewer workers	5 to 9 workers	10 to 19 workers	20 to 49 workers	50 to 99 workers	100 to 249 workers	250 to 499 workers	500 to 999 workers	1,000 plus workers
52. Finance and Insurance										
Annual average establishments	950	527	242	97	48	26	8	2	1	---
% of total	100.0	55.4	25.4	10.2	5.1	2.7	0.8	0.2	0.1	---
Annual average employment	9,751	1,136	1,540	1,270	1,487	1,838	1,170	n	n	---
% of total	100.0	11.7	15.8	13.0	15.2	18.8	12.0	n	n	---
53. Real Estate, Rental and Leasing										
Annual average establishments	741	539	117	64	20	1	---	---	---	---
% of total	100.0	72.8	15.8	8.6	2.7	0.1	---	---	---	---
Annual average employment	3,254	n	744	817	565	n	---	---	---	---
% of total	100.0	n	22.9	25.1	17.4	n	---	---	---	---
54. Professional, scientific and Technical Services										
Annual average establishments	2,502	1,873	354	181	69	19	4	1	1	---
% of total	100.0	74.9	14.2	7.2	2.8	0.8	0.2	0.0	0.0	---
Annual average employment	12,591	3,011	2,279	2,357	1,988	1,351	743	n	n	---
% of total	100.0	23.9	18.1	18.7	15.8	10.7	5.9	n	n	---
55. Management of Companies and Enterprises										
Annual average establishments	23	15	4	2	---	1	1	---	---	---
% of total	100.0	65.6	17.2	8.6	---	4.3	4.3	---	---	---
Annual average employment	307	28	25	n	---	n	n	---	---	---
% of total	100.0	9.0	8.3	n	---	n	n	---	---	---
56. Administrative and Waste Services										
Annual average establishments	1,109	774	150	94	69	15	7	1	---	---
% of total	100.0	69.8	13.5	8.5	6.2	1.4	0.7	0.1	---	---
Annual average employment	8,375	n	1,044	1,218	1,975	1,150	922	n	---	---
% of total	100.0	n	12.5	14.5	23.6	13.7	11.0	n	---	---
61. Educational Services										
Annual average establishments	311	152	46	41	39	13	15	3	2	1
% of total	100.0	48.8	14.7	13.1	12.5	4.2	4.8	1.0	0.6	0.3
Annual average employment	8,973	323	338	560	1,119	843	2,355	1,026	n	n
% of total	100.0	3.6	3.8	6.2	12.5	9.4	26.3	11.4	n	n
62. Health Care and Social Assistance										
Annual average establishments	1,843	774	461	300	187	49	46	17	8	2
% of total	100.0	42.0	25.0	16.3	10.1	2.7	2.5	0.9	0.4	0.1
Annual average employment	40,715	n	3,042	4,116	5,612	3,292	6,988	5,985	5,511	n
% of total	100.0	n	7.5	10.1	13.8	8.1	17.2	14.7	13.5	n
71. Arts, Entertainment and Recreation										
Annual average establishments	390	243	72	41	27	4	2	---	1	---
% of total	100.0	62.4	18.4	10.6	6.9	1.0	0.5	---	0.3	---
Annual average employment	3,718	785	618	590	789	285	n	---	n	---
% of total	100.0	21.1	16.6	15.9	21.2	7.7	n	---	n	---
72. Accommodation and Food Services										
Annual average establishments	1,833	674	365	395	325	53	11	3	4	3
% of total	100.0	36.8	19.9	21.5	17.7	2.9	0.6	0.2	0.2	0.2
Annual average employment	29,325	2,000	2,462	5,355	9,856	3,395	1,603	727	1,824	2,103
% of total	100.0	6.8	8.4	18.3	33.6	11.6	5.5	2.5	6.2	7.2
81. Other services, except public administration										
Annual average establishments	2,070	1,483	379	153	50	5	---	1	---	---
% of total	100.0	71.6	18.3	7.4	2.4	0.2	---	0.0	---	---
Annual average employment	9,297	n	2,384	1,975	1,353	338	---	n	---	---
% of total	100.0	n	25.6	21.2	14.5	3.6	---	n	---	---

Note: Detail may not add to totals due to rounding.

n = Data is confidential.

Dash = Zero establishments.

Source: Quarterly Census of Employment and Wages, produced in cooperation with the U.S. Bureau of Labor Statistics
released: December 2009

Table 5

Vermont Size Class By County, 2004, private ownership
annual average establishments and annual average employment

County	Total	Size of establishments								
		4 or fewer workers	5 to 9 workers	10 to 19 workers	20 to 49 workers	50 to 99 workers	100 to 249 workers	250 to 499 workers	500 to 999 workers	1,000 plus workers
Total Private										
Annual average establishments	22,566	13,121	4,386	2,758	1,594	396	235	48	21	8
% of total	100.0	58.1	19.4	12.2	7.1	1.8	1.0	0.2	0.1	0.0
Annual average employment	248,094	27,642	29,804	37,513	48,185	27,262	34,404	16,164	12,701	14,419
% of total	100.0	11.1	12.0	15.1	19.4	11.0	13.9	6.5	5.1	5.8
01. Addison										
Annual average establishments	1,191	726	238	140	58	16	10	1	1	1
% of total	100.0	61.0	19.9	11.8	4.9	1.4	0.8	0.1	0.1	0.1
Annual average employment	11,836	1,565	1,634	1,974	1,891	1,161	1,437	n	n	n
% of total	100.0	13.2	13.8	16.7	16.0	9.8	12.1	n	n	n
03. Bennington										
Annual average establishments	1,488	826	327	196	95	18	21	3	2	---
% of total	100.0	55.5	21.9	13.1	6.4	1.2	1.4	0.2	0.1	---
Annual average employment	15,863	n	2,271	2,614	2,818	1,120	2,999	895	n	---
% of total	100.0	n	14.3	16.5	17.8	7.1	18.9	5.6	n	---
05. Caledonia										
Annual average establishments	932	492	218	133	63	14	10	3	---	---
% of total	100.0	52.7	23.4	14.3	6.7	1.5	1.1	0.3	---	---
Annual average employment	9,593	1,104	1,460	1,886	1,823	803	1,528	987	---	---
% of total	100.0	11.5	15.2	19.7	19.0	8.4	15.9	10.3	---	---
07. Chittenden										
Annual average establishments	5,437	2,800	1,082	779	531	136	87	13	7	2
% of total	100.0	51.5	19.9	14.3	9.8	2.5	1.6	0.2	0.1	0.0
Annual average employment	80,362	n	7,494	10,667	16,430	9,726	12,681	4,347	4,189	n
% of total	100.0	n	9.3	13.3	20.4	12.1	15.8	5.4	5.2	n
09. Essex										
Annual average establishments	128	88	24	9	5	---	---	1	---	---
% of total	100.0	68.9	19.0	7.2	4.1	---	---	0.8	---	---
Annual average employment	1,088	n	141	125	141	---	---	n	---	---
% of total	100.0	n	13.0	11.5	12.9	---	---	n	---	---
11. Franklin										
Annual average establishments	1,094	618	231	142	64	19	15	5	1	---
% of total	100.0	56.5	21.1	13.0	5.8	1.7	1.3	0.5	0.1	---
Annual average employment	12,040	n	1,572	1,876	1,886	1,265	2,276	1,369	n	---
% of total	100.0	n	13.1	15.6	15.7	10.5	18.9	11.4	n	---
13. Grand Isle										
Annual average establishments	188	137	39	6	5	1	---	---	---	---
% of total	100.0	73.1	20.8	3.2	2.4	0.5	---	---	---	---
Annual average employment	845	n	268	95	110	n	---	---	---	---
% of total	100.0	n	31.7	11.2	13.0	n	---	---	---	---

See footnotes at end of table.

Vermont Size Class By County, 2004, private ownership
annual average establishments and annual average employment

County	Total	Size of establishments								
		4 or fewer workers	5 to 9 workers	10 to 19 workers	20 to 49 workers	50 to 99 workers	100 to 249 workers	250 to 499 workers	500 to 999 workers	1,000 plus workers
15. Lamoille										
Annual average establishments	982	586	200	120	51	16	5	2	2	---
% of total	100.0	59.7	20.4	12.2	5.2	1.6	0.5	0.2	0.2	---
Annual average employment	9,021	1,235	1,328	1,655	1,474	1,074	734	n	n	---
% of total	100.0	13.7	14.7	18.3	16.3	11.9	8.1	n	n	---
17. Orange										
Annual average establishments	765	493	139	72	45	13	2	1	---	---
% of total	100.0	64.4	18.2	9.5	5.8	1.7	0.3	0.1	---	---
Annual average employment	5,911	1,096	928	983	1,411	898	n	n	---	---
% of total	100.0	18.5	15.7	16.6	23.9	15.2	n	n	---	---
19. Orleans										
Annual average establishments	828	520	143	97	48	13	3	5	---	---
% of total	100.0	62.8	17.2	11.7	5.8	1.6	0.4	0.6	---	---
Annual average employment	7,900	1,203	990	1,325	1,520	812	353	1,697	---	---
% of total	100.0	15.2	12.5	16.8	19.2	10.3	4.5	21.5	---	---
21. Rutland										
Annual average establishments	2,303	1,306	480	270	179	40	22	3	1	2
% of total	100.0	56.7	20.8	11.7	7.8	1.7	1.0	0.1	0.0	0.1
Annual average employment	24,863	2,832	3,109	3,493	5,303	2,793	3,356	1,180	n	n
% of total	100.0	11.4	12.5	14.0	21.3	11.2	13.5	4.7	n	n
23. Washington										
Annual average establishments	2,287	1,316	443	290	168	41	23	3	4	---
% of total	100.0	57.5	19.4	12.7	7.3	1.8	1.0	0.1	0.2	---
Annual average employment	24,327	2,868	3,037	3,984	4,821	2,972	3,296	1,111	2,239	---
% of total	100.0	11.8	12.5	16.4	19.8	12.2	13.5	4.6	9.2	---
25. Windham										
Annual average establishments	1,795	1,050	363	204	117	31	23	4	1	2
% of total	100.0	58.5	20.2	11.4	6.5	1.7	1.3	0.2	0.1	0.1
Annual average employment	19,986	2,312	2,442	2,777	3,392	2,202	3,285	1,457	n	n
% of total	100.0	11.6	12.2	13.9	17.0	11.0	16.4	7.3	n	n
27. Windsor										
Annual average establishments	2,216	1,354	403	260	153	33	10	2	---	1
% of total	100.0	61.1	18.2	11.7	6.9	1.5	0.5	0.1	---	0.0
Annual average employment	18,851	2,878	2,731	3,557	4,667	2,158	1,554	n	---	n
% of total	100.0	15.3	14.5	18.9	24.8	11.4	8.2	n	---	n
99. County unspecified										
Annual average establishments	934	810	58	40	13	4	4	2	2	---
% of total	100.0	86.8	6.2	4.3	1.4	0.4	0.5	0.2	0.2	---
Annual average employment	5,610	1,226	399	503	499	226	679	n	n	---
% of total	100.0	21.9	7.1	9.0	8.9	4.0	12.1	n	n	---

Note: Detail may not add to totals due to rounding.

n = Data is confidential.

Dash = Zero establishments.

Source: Quarterly Census of Employment and Wages, produced in cooperation with the U.S. Bureau of Labor Statistics
released: December 2009

EXPLANATION of TERMS

Annual Average Employment or Jobs:

The employment figures in this report are an average of the monthly employment figures for the calendar year. In some industries where there are significant seasonal changes in the number employed during the year, the annual average employment will differ significantly from the level of employment for any part of the year. Employment is the same as the number of jobs.

Annual Average Wage:

The annual average wage is a figure computed from total wages and average employment (total annual wages/annual average employment). Because it is an average of aggregate data the annual average wage should not be used to estimate hourly wages. Hourly information is not reported by employers. Employment and wage data cover hourly workers, salaried workers and persons paid on a commission basis and who may be working full-time, part-time, or overtime. The annual average employment and wage figures can be influenced by the mix of these items and should be interpreted with caution.

Confidentiality Standards:

Confidentiality standards apply to private sector data only. The publication of data that would disclose an individual firm's employment or wage information is prohibited under the Bureau of Labor Statistic's guidelines of confidentiality. Aggregate data is not published if it represents fewer than three private employers or if one private employer represents 80% or more of the data. In addition, Vermont does not publish data with fewer than ten private sector employees. All government data is publishable.

Covered Employer:

An employer is covered if wages of at least \$1,500 are paid during a calendar quarter; or employs at least one worker for some part of a day in each of 20 different weeks in a calendar year; or is required to pay Federal Unemployment Tax because individuals in another state(s) were employed or for some other reason; or pays cash wages of \$1,000 or more in any calendar quarter for domestic services in a private home; or pays cash wages of \$20,000 or more in any calendar quarter for agricultural services, or employ ten or more workers in agricultural employment; or furnishes employment in a charitable, or educational environment to four or more workers for some part of a day in each of 20 different weeks in a calendar year; or is the State or any political subdivision thereof; or voluntarily elects to provide unemployment coverage to workers even though it is not required.

Covered Employment and Wages:

The data in this report refers to the employees and their wages in firms subject to the Vermont Unemployment Compensation Law, or for federal employees, the Federal Unemployment Compensation Law. Workers who are not included are the self-employed, firm owners not incorporated and the following employee groups: elected officials, nonprofit religious, charitable and educational organizations, unpaid family members, farm (with some exceptions) and railroad (see definition for Covered Employer) workers.

Data Source:

Data is compiled from quarterly reports submitted by employers. The reports contain monthly employment information for the pay period that includes the 12th of the month and total wages paid in the quarter.

Growth or Increase in the Number of Jobs:

All information referring to growth in this report is based on net changes. The amount of growth during any time period is equal to the number of jobs (or wages) gained minus the number of jobs (wages) lost.

Industry Groups or NAICS:

Beginning with the publication of 2001 annual data, the North American Industry Classification System (NAICS) is used to group industries. NAICS replaced the Standard Industrial Classification (SIC) system in the U.S., and is used by all North American governmental and many private organizations for the purposes of uniformity in presenting statistical data. The NAICS classification structure groups industries based on similar production processes. For more information on NAICS, please visit the Bureau of Labor Statistics website, <http://www.bls.gov/bls/naics.htm>.

Ownership - Private and Governmental:

The ownership of establishments is classified as either Private or Government. Government employers are further classified by the level of government: Local (operated by town), State (operated by the State) or Federal (operated by the United States Government).

Reclassification of Specific Firms:

In an active economy many firms change their physical location and some change their primary business activity. To maintain and update location and activity information all employers are surveyed during a three year cycle. The resulting changes are effective at the start of the next calendar year. While this improves the accuracy of data analysis, it also introduces fluctuations in the data from year to year due to these administrative changes.

Reporting Units, Establishments, Worksites and Employers:

A reporting unit is the smallest economic unit for which data is reported. An establishment is an economic unit, such as a farm, factory, or store, which produces goods or provides services at a single physical worksite and engaged, predominantly, in one type of economic activity. Most employers operate only one establishment or place of business so all of their activity is reported under one reporting unit. Employers who operate more than one establishment in the state are requested to report each worksite separately. In some cases the employer aggregates the worksites into several units, though not at the establishment level. Occasionally, a single physical location encompasses two or more distinct and significant activities that, if possible, are reported as separate units. In these cases, a reporting unit is only one worksite, or a group of worksites, or part of a worksite and not all of an employer's activity in the state.

Seasonal Activity:

Seasonal activity in Vermont industries produces significant variation in employment levels during the year. The annual average provides a convenient summary of the year's employment and wages. By definition, however, it obscures the peaks and valleys.

Size Class:

Each reporting unit is assigned to one of nine size class categories based upon March employment. It is important to note that for multi-establishment employers size class is based on each worksite, not the firm's total employment.

Unclassified County Data:

A small percentage of covered employment and total wages are not classified by county. In these cases the employees' work is not performed at a given physical location, e.g., traveling salespeople.

**North American Industry Classification System (NAICS)
Two Digit Sector and Three Digit Subsector**

SECTOR 11, Agriculture, forestry, fishing & hunting

- 111 Crop production
- 112 Animal production
- 113 Forestry & logging
- 114 Fishing, hunting & trapping
- 115 Agriculture & forestry support activities

SECTOR 21, Mining

- 211 Oil & gas extraction
- 212 Mining, except oil & gas
- 213 Support activities for mining

SECTOR 22, Utilities

- 221 Utilities

SECTOR 23, Construction

- 236 Construction of buildings
- 237 Heavy & civil engineering construction
- 238 Specialty trade contractors

SECTOR 31-33, Manufacturing

- 311 Food Mfg.
- 312 Beverage & tobacco product mfg.
- 313 Textile mills
- 314 Textile product mills
- 315 Apparel manufacturing
- 316 Leather & allied product mfg.
- 321 Wood product manufacturing
- 322 Paper manufacturing
- 323 Printing & related support activities
- 324 Petroleum & coal products mfg.
- 325 Chemical manufacturing
- 326 Plastics & rubber products mfg.
- 327 Nonmetallic mineral product mfg.
- 331 Primary metal manufacturing
- 332 Fabricated metal product mfg.
- 333 Machinery manufacturing
- 334 Computer & electronic product mfg.
- 335 Electrical equipment & appliance mfg.
- 336 Transportation equipment mfg.
- 337 Furniture & related product mfg.
- 339 Miscellaneous manufacturing

SECTOR 42, Wholesale trade

- 423 Merchant wholesalers, durable goods
- 424 Merchant wholesalers, nondurable goods
- 425 Electronic markets & agents & brokers

SECTOR 44-45, Retail trade

- 441 Motor vehicle & parts dealers
- 442 Furniture & home furnishings stores
- 443 Electronics & appliance stores
- 444 Building material & garden supply stores
- 445 Food & beverage stores
- 446 Health & personal care stores
- 447 Gasoline stations
- 448 Clothing & clothing accessories stores
- 451 Sporting goods, hobby, book & music stores
- 452 General merchandise stores
- 453 Miscellaneous store retailers
- 454 Nonstore retailers

SECTOR 48-49, Transportation & warehousing

- 481 Air transportation
- 482 Rail transportation
- 483 Water transportation
- 484 Truck transportation
- 485 Transit & ground passenger transport
- 486 Pipeline transportation
- 487 Scenic & sightseeing transportation

SECTOR 48-49, Transportation & warehousing (continued)

- 488 Support activities for transportation
- 491 Postal service
- 492 Couriers & messengers
- 493 Warehousing & storage

SECTOR 51, Information

- 511 Publishing industries, except Internet
- 512 Motion picture & sound recording industries
- 515 Broadcasting, except Internet
- 516 Internet publishing & broadcasting
- 517 Telecommunications
- 518 ISPs, search portals, & data processing
- 519 Other information services

SECTOR 52, Finance & insurance

- 521 Monetary authorities - central bank
- 522 Credit intermediation & related activities
- 523 Securities, commodity contracts, investments
- 524 Insurance carriers & related activities
- 525 Funds, trusts, & other financial vehicles

Sector 53, Real estate & rental & leasing

- 531 Real estate
- 532 Rental & leasing services
- 533 Lessors of nonfinancial intangible assets

SECTOR 54, Professional & technical services

- 541 Professional & technical services

SECTOR 55, Management of companies & enterprises

- 551 Mgt of companies & enterprises

SECTOR 56, Administrative & waste services

- 561 Administrative & support services
- 562 Waste mgt & remediation services

SECTOR 61, Educational services

- 611 Educational services

SECTOR 62, Health care & social assistance

- 621 Ambulatory health care services
- 622 Hospitals
- 623 Nursing & residential care facilities
- 624 Social assistance

SECTOR 71, Arts, entertainment, & recreation

- 711 Performing arts & spectator sports
- 712 Museums, historical sites, zoos, & parks
- 713 Amusements, gambling, & recreation

SECTOR 72, Accommodation & food services

- 721 Accommodation
- 722 Food services & drinking places

SECTOR 81, Other services, except public administration

- 811 Repair & maintenance
- 812 Personal & laundry services
- 813 Membership associations & organizations
- 814 Private households

SECTOR 92, Public administration

- (Government employers only)
- 921 Executive, legislative & general government
- 922 Justice, public order, & safety activities
- 923 Admin of human resource programs
- 924 Admin of environmental programs
- 925 Community & housing program admin
- 926 Administration of economic programs
- 927 Space research & technology
- 928 National security & international affairs