

VERMONT ECONOMIC AND TRAVEL INDICATORS

AUGUST 2012

visit our web site at: www.vtLmi.info

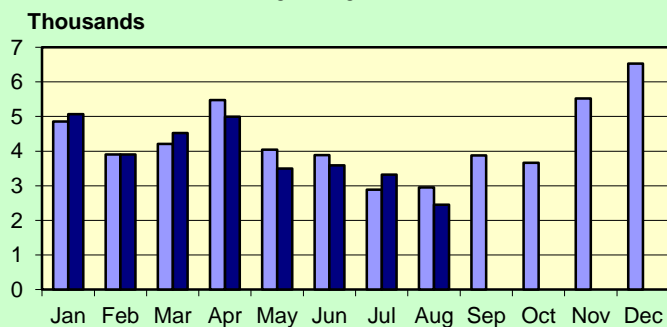
Labor Market & Business Activity	Current	Last	Year	% Change	
	Month	Month	Ago	Last Month	Last Year
Employment (NonFarm,S.A.,Thousand) *	303.2	305.6	299.5	-0.8%	1.2%
Avg. Weekly Hours (Manufacturing) *	37.5	37.5	39.0	0.0%	-3.8%
Unemployment Rate (S. A. %)	5.3	5.0	5.6	6.0%	-5.4%
U.I. Initial Claims	2,451	3,323	2,950	-26.2%	-16.9%
U.I. Exhaustees	430	502	539	-14.3%	-20.2%
DOL Jobs Filled (last 12 months)	NA	NA	643	NA	NA
Passenger Car Registrations	36,684	35,066	35,889	4.6%	2.2%
Total Current Car Registrations	414,789	415,505	414,068	-0.2%	0.2%
Total Current Pick-Up Truck Reg.	108,289	108,688	110,499	-0.4%	-2.0%
Bank Deposits - Survey (\$Million)	6,396	6,414	5,957	-0.3%	7.4%
New Business Incorporations **	31	29	26	6.9%	19.2%
Airport Enplanements (B.I.A.)	59,598	59,740	63,860	-0.2%	-6.7%

* Numbers are preliminary. ** Includes "closed" corporations.

State Tax Revenues (\$Million)	Current	Fiscal Year	FYTD	% Change	
	Month	To Date	Last Year	Last Year	Last FYTD
General Fund	88.9	181.2	176.3	-1.3%	2.8%
Personal Income	37.8	86.7	88.0	-13.1%	-1.4%
Sales & Use	19.4	40.4	38.7	12.1%	4.6%
Corporate Income	-0.6	1.0	4.0	-130.7%	-74.5%
Rooms & Meals	13.3	24.5	22.8	6.9%	7.4%
Property Transfer	0.9	1.8	1.5	16.0%	21.6%
Other *	5.0	12.3	9.9	49.3%	24.2%
Transportation Fund	21.4	37.4	35.3	6.5%	6.0%
Gasoline	5.5	10.5	10.6	-0.9%	-1.2%
Purchase and Use	5.2	8.7	8.2	3.8%	5.8%
Motor Vehicle Fees	7.3	12.9	11.6	10.7%	11.2%
Other	1.6	3.0	2.5	37.6%	22.6%
Education Fund, non-property tax component	14.1	27.3	26.3	8.6%	3.9%

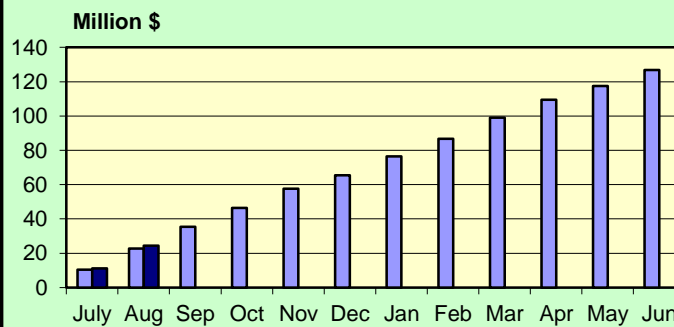
* Includes: Insurance, Inheritance & Estate, Bank Franchise, Telephone, Liquor, Beverage, Fees and Other Taxes.

UI Initial Claims 2011-2012



Source: Vt. Department of Labor

Rooms & Meals Tax Revenues to Date FY2012-FY2013



Source: Vt. Dept. of Finance & Management

AUGUST 2012

Construction

Residential Building Permits	Current	Year	Year	Year To Date	
	Month	To Date	Ago	Last Year	% Change
Housing Units	78	802	85	781	2.7%
Estimated Value (\$thousand)	13,253	141,134	18,601	132,687	6.4%

Employment	Current	Last	Year	% Change	
	Month	Month	Ago	Last Month	Last Year
Construction Emp. (S.A.,thousand)	13.6	13.8	13.7	-1.4%	-0.7%

Travel & Tourism	Current	Last	Year	% Change	
	Month	Month	Ago	Last Month	Last Year
Leisure & Hospitality Emp. (S.A.,thousand)	32.8	34.0	32.8	-3.5%	0.0%
Selected Traffic Volume *	81,330	78,403	78,738	3.7%	3.3%

>Welcome Center Counts, Total	116,196	103,444	111,615	12.3%	4.1%
Guilford	80,384	72,061	76,747	11.5%	4.7%
Fair Haven	20,568	18,116	20,456	13.5%	0.5%
Georgia (Southbound)	15,244	13,267	14,412	14.9%	5.8%

* Missing one location for 2011, 2012 data was removed for comparability.

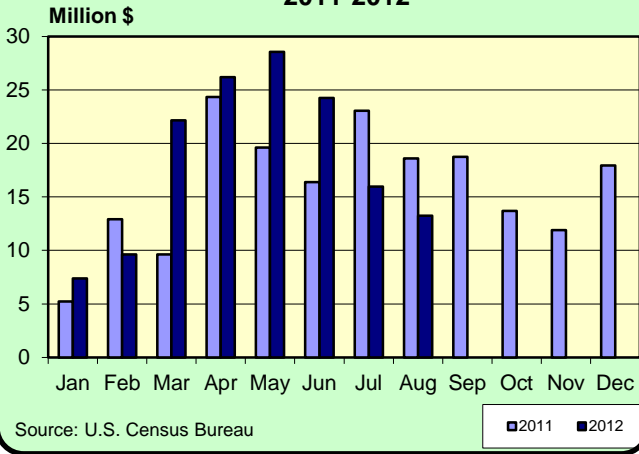
Seasonal Indicators	Current	Season	Year	Season To Date	
	Month	To Date	Ago	Year Ago	% Change
Attendance Surveys					
State Parks (Day Use)	135,616	466,467	116,407	400,955	16.3%
State Campgrounds (Campers)	121,835	346,401	112,536	317,855	9.0%
Travel Attr. & Museums (Summer) *	122,961	310,102	136,237	331,400	-6.4%
Travel Attr. & Museums (Year Round) **	88,795	388,623	90,168	379,102	2.5%

* Based on VDOL survey of 8 Attractions. ** Based on VDOL survey of 7 attractions.

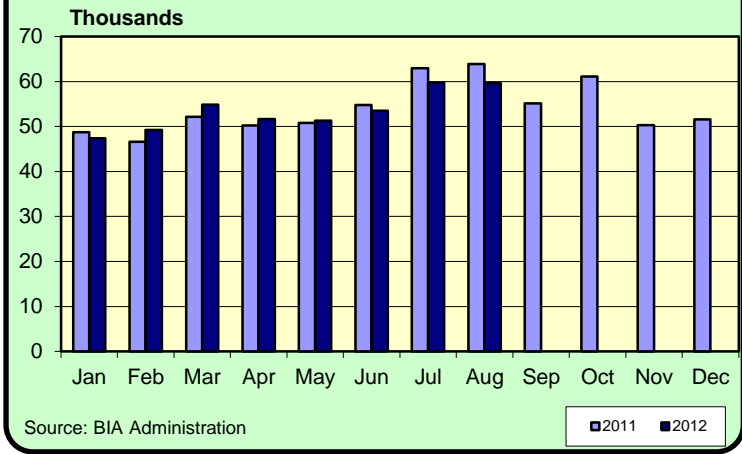
Travel Attraction data is collected as part of a managed sample; above information may not be directly comparable to previous releases..

AUGUST 2012

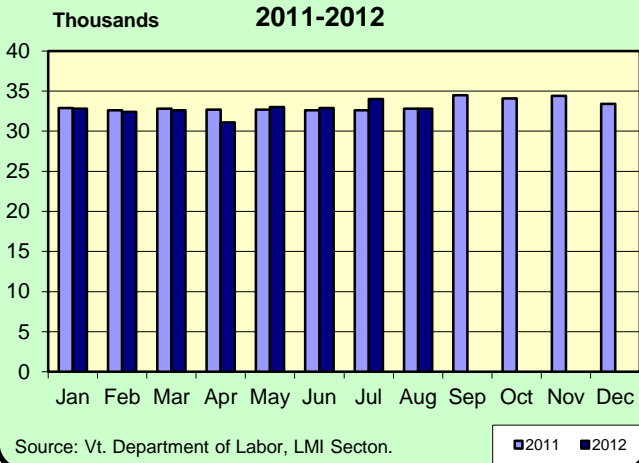
**Vermont Residential Building Permits
Estimated Value (\$Million)
2011-2012**



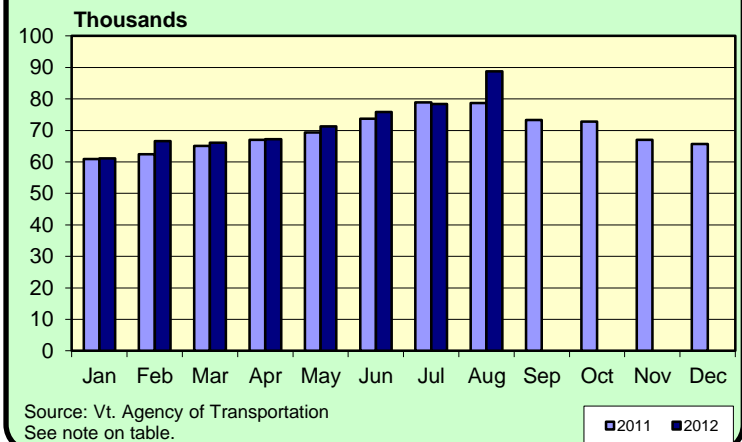
**Enplanements 2011-2012
Burlington International Airport**



**Leisure & Hospitality Employment
Seasonally Adjusted Estimates
2011-2012**



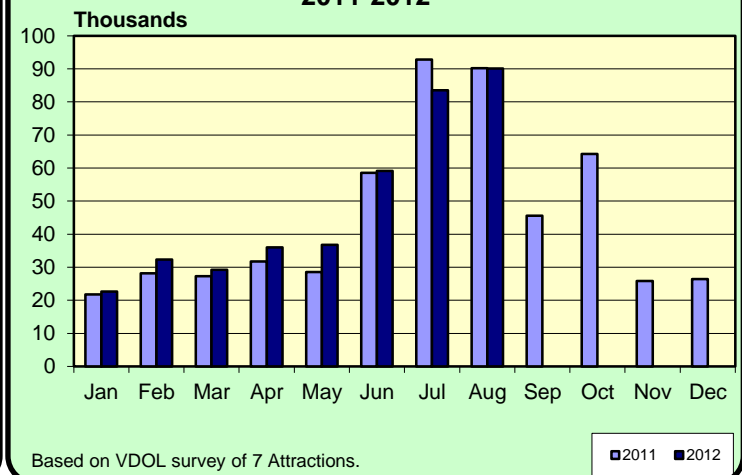
**Traffic Volumes at Selected Locations
2011-2012**



**Welcome Center Counts
2011-2012**



**Travel Attraction Attendance (Yr Rd)
2011-2012**



AUGUST 2012

Rooms & Meals Business Receipts **	CY 2nd Qtr	CY 1st Qtr	CY 2nd Qtr	% Change	
	(Apr-Jun)	(Jan-Mar)	(Apr-Jun)	Last Quarter	Last Year
	2012 *	2012	2011		
Room (\$Thousand)	68,745	107,039	61,811	-35.8%	11.2%
Meals (\$Thousand)	203,889	212,323	192,651	-4.0%	5.8%
Alcohol (\$Thousand)	33,382	41,959	31,571	-20.4%	5.7%

* Numbers are preliminary.

** All Business Receipts are for the Calendar Year (CY).

Vermont DEPARTMENT OF LABOR
ECONOMIC AND TRAVEL INDICATORS

Vermont Economic and Travel Indicators is published by the Economic & Labor Market Information Section of the VT Department of Labor. This publication can be found on our website: www.vtLmi.info

For more information or email address changes: Phone: (802)828-4202
or email: Labor-Lmi@state.vt.us

Data sources for this publication are: U.S. Census Bureau; Burlington Airport Administration; Vt. Departments of Labor, Finance & Management, Forests, Parks & Recreation, Taxes, Motor Vehicles, Vermont Information Center Division, Buildings & General Services, Vt. Agency of Transportation; Secretary of State's Office; Vt. Division for Historic Preservation; selected banks and travel attractions.

Equal opportunity is the law. The State of Vermont is an Equal Opportunity / Affirmative Action Employer. Applications from women, individuals with disabilities, and people from diverse cultural backgrounds are encouraged. Auxiliary aids and services are available upon request to individuals with disabilities. 711 (TTY/Relay Service) or (802) 828-4203 TDD (Vermont Department of Labor).