



**For Immediate Release**  
**June 15, 2018**

Contact: Mathew Barewicz, (802) 828-4153  
Mathew.Barewicz@vermont.gov

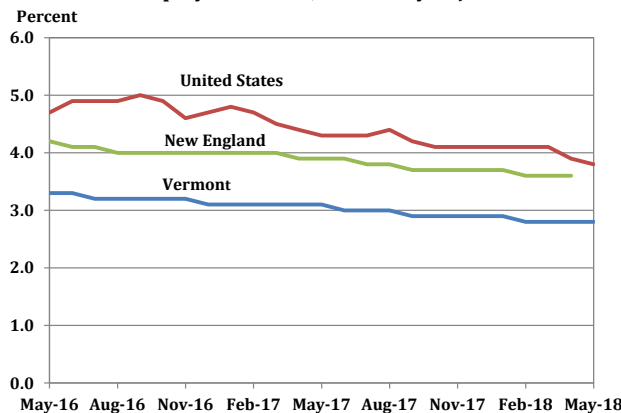
**Vermont Unemployment Rate Holds at 2.8 percent in May**

The Vermont Department of Labor announced today that the seasonally-adjusted statewide unemployment rate for May was 2.8 percent. This reflects no change from the revised April rate. The national rate in May was 3.8 percent. As of the prior month’s preliminary data, the Burlington-South Burlington Metropolitan NECTA was tied for the eighth lowest unemployment rate in the country for all metropolitan areas. Overall, Vermont’s unemployment rate was tied for the fifth lowest in the country for the same time period.

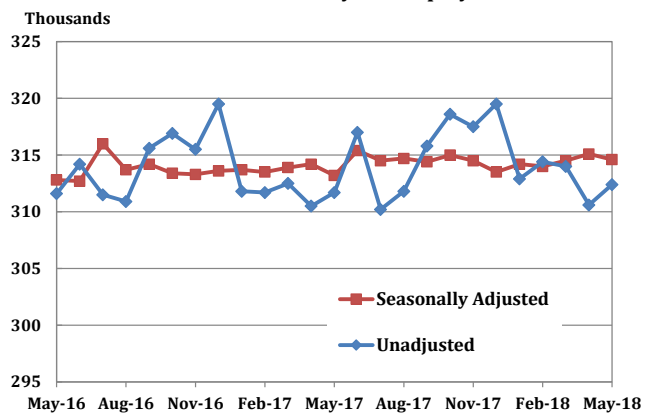
*Commissioner’s Message*

“The trend of a rising Vermont labor force highlighted last month, continues in the newly released May data. For the fifth month in a row, Vermont households report increasing labor force participation rates. The combination of near record low levels of unemployment and active recruitment by Vermont companies appears to be motivating individuals across the state to re-enter the labor market. The Department has a federal charge to work with individuals and businesses with equal intensity. Accordingly, staff in the Department’s Career Resource Centers are ready to assist not only job seekers and students but also businesses looking to hire or develop a training program. Contact any one of the Department’s 12 Career Resource Centers to learn more about how we can work together,” said Labor Commissioner Lindsay Kurrle.

**Chart 1. Unemployment Rate, seasonally adjusted**



**Chart 2. Vermont Nonfarm Payroll Employment**



## *State of Vermont Overview*

The Vermont seasonally-adjusted unemployment rate held steady in May at a level of 2.8 percent. The comparable United States rate in May was 3.8 percent which was a decrease of one-tenth of one percentage point from the revised April estimate. The seasonally-adjusted Vermont data for May show the Vermont civilian labor force increased by 828 from the prior month's revised estimate. The number of employed persons increased by 764 and the number of unemployed persons increased by 64. None of these changes were statistically significant in the seasonally-adjusted series.

The May unemployment rates for Vermont's 17 labor market areas ranged from 2.0 percent in Burlington-South Burlington and White River Junction to 4.2 percent in Woodstock (note: local labor market area unemployment rates are not seasonally-adjusted). For comparison, the May unadjusted unemployment rate for Vermont was 2.6 percent which reflects a decrease of four-tenths of one percentage point from the revised unadjusted April level and a decrease of two-tenths of one percentage point from a year ago.

## *Analysis of Job Changes by Industry*

### **Not-Seasonally-Adjusted**

The preliminary 'not-seasonally-adjusted' jobs estimates for May show an increase of 1,800 jobs when compared to the revised April numbers. There was a decrease of 300 jobs between the preliminary and the revised April estimates due to the inclusion of more data. The monthly increase seen in the May numbers was primarily attributable to seasonal hiring in construction. The broader economic trends can be detected by focusing on the over-the-year changes in this data series. As detailed in the preliminary 'not-seasonally-adjusted' May data, Total Private industries have decreased by 500 jobs (-0.2 percent) and Government (including public education) employment has increased by 1,200 jobs (2.1 percent) in the past year.

### **Seasonally-Adjusted**

The seasonally-adjusted data for May reports a decrease of 500 jobs from the revised April data. As with the 'not-seasonally-adjusted' data, this over-the-month change is from the revised April numbers which experienced an increase of 200 jobs from the preliminary estimates. The seasonally-adjusted over-the-month changes in May were minor at the sector level. Those with a notable percent increase include: Mining & Logging (+100 jobs or +14.3%) and Arts, Entertainment & Recreation (+100 jobs or +2.0%). Sectors with a notable percent decrease include: Accommodation & Food Services (-900 jobs or -2.7%) and Durable Goods Manufacturing (-300 jobs or -1.6%).

---

**The Unemployment and Jobs Report for June is scheduled to be released on Friday, July 20, 2018 at 10:00 a.m.**

**Table 1. Vermont Labor Force Estimates, seasonally adjusted**

	May 2018	April 2018	May 2017	Change From:	
				April 2018	May 2017
Civilian Labor Force	348,852	348,024	344,562	828	4,290
Employed	339,187	338,423	334,014	764	5,173
Unemployed	9,665	9,601	10,548	64	-883
Unemployment Rate (%)	2.8	2.8	3.1	0.0	-0.3

Vermont's labor force, employment and unemployment statistics are produced from a combination of a Statewide survey of households and statistical modeling. The data are produced by the Local Area Unemployment Statistics Program (LAUS), a cooperative program with the U.S. Department of Labor, Bureau of Labor Statistics ([www.bls.gov/lau](http://www.bls.gov/lau)) and the Vermont Department of Labor ([www.vtlmi.info/labforce](http://www.vtlmi.info/labforce)).

**Table 2. Vermont Labor Market Areas, Labor Force Estimates**  
not seasonally adjusted

Labor Market Area <sup>1</sup>	Civilian Labor Force	May, 2018		Unemployment Rate <sup>2</sup> (%)		
		Employed	Unemployed	May-18	Apr-18	May-17
Vermont Total	347,486	338,331	9,155	2.6	3.0	2.8
Barre-Montpelier	26,281	25,660	621	2.4	3.0	2.6
Bennington	11,305	10,948	357	3.2	3.6	3.3
Brattleboro	22,154	21,458	696	3.1	3.3	3.3
Burlington-South Burlington	126,460	123,877	2,583	2.0	2.2	2.2
Derby	12,902	12,374	528	4.1	5.9	4.4
Highgate	10,162	9,915	247	2.4	3.1	2.9
Manchester	11,357	10,918	439	3.9	4.1	3.8
Middlebury	18,877	18,414	463	2.5	3.0	2.6
Morristown-Waterbury	18,111	17,520	591	3.3	4.2	3.7
Newbury	2,865	2,788	77	2.7	3.4	3.0
Northfield-Waitsfield	6,713	6,528	185	2.8	2.9	3.0
Randolph	7,415	7,203	212	2.9	3.5	3.0
Rutland	21,392	20,661	731	3.4	3.2	3.4
Springfield	10,672	10,332	340	3.2	3.1	3.1
St. Johnsbury	13,719	13,313	406	3.0	4.0	3.3
White River Junction	20,245	19,834	411	2.0	2.3	2.2
Woodstock	3,738	3,580	158	4.2	3.6	4.7

<sup>1</sup>The area names above are common language titles; for official names of areas including encompassing cities and towns please refer to the Vermont Labor Market Area map (<http://www.vtlmi.info/lmadef2015.pdf>).

<sup>2</sup>Rate is estimate for number of unemployed divided by total labor force, expressed as a percent.

Source: Local Area Unemployment Statistics Program (LAUS) produced by the Vermont Department of Labor ([www.vtlmi.info/labforce.cfm](http://www.vtlmi.info/labforce.cfm)) in cooperation with the U.S. Bureau of Labor Statistics ([www.bls.gov/lau](http://www.bls.gov/lau)).

**Table 3. Vermont Nonfarm Payroll Employment, seasonally adjusted (thousands)**

NAICS Industry	May-18	Apr-18	May-17	Change From:		% Change From:	
	Prelim	Revised	Revised	Apr-18	May-17	Apr-18	May-17
<b>Statewide, Total Nonfarm</b>	<b>314.6</b>	<b>315.1</b>	<b>313.2</b>	<b>-0.5</b>	<b>1.4</b>	<b>-0.2</b>	<b>0.4</b>
<b>Total Private</b>	<b>258.7</b>	<b>259.4</b>	<b>258.6</b>	<b>-0.7</b>	<b>0.1</b>	<b>-0.3</b>	<b>0.0</b>
Mining, Logging and Construction	16.5	16.3	15.9	0.2	0.6	1.2	3.8
Mining & Logging	0.8	0.7	0.8	0.1	0.0	14.3	0.0
Construction	15.7	15.6	15.1	0.1	0.6	0.6	4.0
Manufacturing	28.7	29.0	29.6	-0.3	-0.9	-1.0	-3.0
Durable Goods	18.0	18.3	18.3	-0.3	-0.3	-1.6	-1.6
Non-Durable Goods	10.7	10.7	11.3	0.0	-0.6	0.0	-5.3
Trade, Transportation and Utilities	55.0	55.0	55.3	0.0	-0.3	0.0	-0.5
Wholesale Trade	9.2	9.2	9.3	0.0	-0.1	0.0	-1.1
Retail Trade	37.4	37.4	38.0	0.0	-0.6	0.0	-1.6
Trans., Warehousing & Utilities	8.4	8.4	8.0	0.0	0.4	0.0	5.0
Information <sup>1</sup>	4.4	4.4	4.5	0.0	-0.1	0.0	-2.2
Financial Activities	12.5	12.4	12.0	0.1	0.5	0.8	4.2
Finance & Insurance	9.4	9.3	9.0	0.1	0.4	1.1	4.4
Real Estate, Rental & Leasing	3.1	3.1	3.0	0.0	0.1	0.0	3.3
Professional and Business Services	28.3	28.2	28.6	0.1	-0.3	0.4	-1.0
Professional & Technical Services	14.4	14.4	14.5	0.0	-0.1	0.0	-0.7
Administrative & Waste Services	12.0	11.9	12.0	0.1	0.0	0.8	0.0
Education and Health Services	66.3	66.2	65.4	0.1	0.9	0.2	1.4
Private Educational Services	13.6	13.6	13.5	0.0	0.1	0.0	0.7
Health Care & Social Assistance	52.7	52.6	51.9	0.1	0.8	0.2	1.5
Leisure and Hospitality	37.1	37.9	37.1	-0.8	0.0	-2.1	0.0
Arts, Entertainment & Recreation	5.0	4.9	4.4	0.1	0.6	2.0	13.6
Accommodation & Food Services	32.1	33.0	32.7	-0.9	-0.6	-2.7	-1.8
Other Services	9.9	10.0	10.2	-0.1	-0.3	-1.0	-2.9
<b>Government</b>	<b>55.9</b>	<b>55.7</b>	<b>54.6</b>	<b>0.2</b>	<b>1.3</b>	<b>0.4</b>	<b>2.4</b>
Federal	7.0	6.9	6.9	0.1	0.1	1.4	1.4
State	19.1	19.1	18.0	0.0	1.1	0.0	6.1
Local	29.8	29.7	29.7	0.1	0.1	0.3	0.3
<b>Burlington-S. Burlington Metro (NECTA)</b>	<b>124.5</b>	<b>124.7</b>	<b>125.0</b>	<b>-0.2</b>	<b>-0.5</b>	<b>-0.2</b>	<b>-0.4</b>
<b>Total Nonfarm</b>	<b>124.5</b>	<b>124.7</b>	<b>125.0</b>	<b>-0.2</b>	<b>-0.5</b>	<b>-0.2</b>	<b>-0.4</b>

<sup>1</sup>This is a new seasonally adjusted series as of January 2018.

With the release of January 2018 data on March 12, 2018, the Current Employment Statistics (CES) State and Area program will convert to concurrent seasonal adjustment. <https://www.bls.gov/sae/saeconcurrent.htm>

Source: Current Employment Statistics Program (CES) produced by the Economic and Labor Market Information Division, Vermont Department of Labor ([www.vtmi.info/ces.cfm](http://www.vtmi.info/ces.cfm)) in cooperation with the U.S. Bureau of Labor Statistics ([www.bls.gov/sae](http://www.bls.gov/sae)).

Estimates are preliminary and subject to revision. See Annual Summary for details.

**Table 4. Vermont Nonfarm Payroll Employment, not seasonally adjusted**

NAICS Industry	May-18	Apr-18	May-17	Change From:		% Change From:	
	Prelim	Revised	Revised	Apr-18	May-17	Apr-18	May-17
<b>TOTAL NONFARM</b>	<b>312,400</b>	<b>310,600</b>	<b>311,700</b>	<b>1,800</b>	<b>700</b>	<b>0.6</b>	<b>0.2</b>
<b>TOTAL PRIVATE</b>	<b>255,100</b>	<b>252,500</b>	<b>255,600</b>	<b>2,600</b>	<b>-500</b>	<b>1.0</b>	<b>-0.2</b>
<b>GOODS-PRODUCING</b>	<b>45,500</b>	<b>43,600</b>	<b>45,900</b>	<b>1,900</b>	<b>-400</b>	<b>4.4</b>	<b>-0.9</b>
MINING, LOGGING AND CONSTRUCTION	16,700	15,000	16,400	1,700	300	11.3	1.8
Mining & Logging	800	700	800	100	0	14.3	0.0
Construction	15,900	14,300	15,600	1,600	300	11.2	1.9
MANUFACTURING	28,800	28,600	29,500	200	-700	0.7	-2.4
Durable Goods	18,100	18,100	18,300	0	-200	0.0	-1.1
Non-Durable Goods	10,700	10,500	11,200	200	-500	1.9	-4.5
Food Mfg.	5,300	5,300	5,200	0	100	0.0	1.9
<b>SERVICE-PROVIDING</b>	<b>266,900</b>	<b>267,000</b>	<b>265,800</b>	<b>-100</b>	<b>1,100</b>	<b>0.0</b>	<b>0.4</b>
TRADE, TRANSPORTATION AND UTILITIES	54,900	54,200	55,000	700	-100	1.3	-0.2
Wholesale Trade	9,300	9,200	9,300	100	0	1.1	0.0
Retail Trade	37,300	36,800	37,700	500	-400	1.4	-1.1
Food & Beverage Stores	9,700	9,700	9,800	0	-100	0.0	-1.0
General Merchandise Stores	3,300	3,200	3,300	100	0	3.1	0.0
Transportation, Warehousing & Utilities	8,300	8,200	8,000	100	300	1.2	3.8
Transportation & Warehousing	7,100	7,000	6,700	100	400	1.4	6.0
Utilities	1,200	1,200	1,300	0	-100	0.0	-7.7
INFORMATION	4,400	4,400	4,500	0	-100	0.0	-2.2
FINANCIAL ACTIVITIES	12,500	12,200	12,000	300	500	2.5	4.2
Finance & Insurance	9,400	9,300	9,000	100	400	1.1	4.4
Real Estate, Rental & Leasing	3,100	2,900	3,000	200	100	6.9	3.3
PROFESSIONAL AND BUSINESS SERVICES	28,700	27,800	28,900	900	-200	3.2	-0.7
Professional & Technical Services	14,400	14,400	14,400	0	0	0.0	0.0
Administrative & Waste Services	12,500	11,500	12,400	1,000	100	8.7	0.8
EDUCATION AND HEALTH SERVICES	66,200	66,100	65,400	100	800	0.2	1.2
Educational Services	13,500	13,800	13,500	-300	0	-2.2	0.0
Colleges and Universities	8,500	8,800	8,600	-300	-100	-3.4	-1.2
Health Care & Social Assistance	52,700	52,300	51,900	400	800	0.8	1.5
Ambulatory Health Care Services	17,700	17,500	17,300	200	400	1.1	2.3
Hospitals	14,000	14,100	14,200	-100	-200	-0.7	-1.4
Nursing & Residential Care Facilities	7,400	7,300	7,400	100	0	1.4	0.0
Social Assistance	13,600	13,400	13,000	200	600	1.5	4.6
LEISURE AND HOSPITALITY	33,000	34,300	33,700	-1,300	-700	-3.8	-2.1
Arts, Entertainment & Recreation	5,000	4,300	4,400	700	600	16.3	13.6
Accommodation & Food Services	28,000	30,000	29,300	-2,000	-1,300	-6.7	-4.4
Accommodation	7,800	10,200	9,200	-2,400	-1,400	-23.5	-15.2
Hotels & Motels	6,900	9,200	8,200	-2,300	-1,300	-25.0	-15.9
Food Services & Drinking Places	20,200	19,800	20,100	400	100	2.0	0.5
OTHER SERVICES	9,900	9,900	10,200	0	-300	0.0	-2.9
<b>GOVERNMENT</b>	<b>57,300</b>	<b>58,100</b>	<b>56,100</b>	<b>-800</b>	<b>1,200</b>	<b>-1.4</b>	<b>2.1</b>
Federal Government	7,000	6,900	6,900	100	100	1.4	1.4
State Government Education	8,600	10,300	7,800	-1,700	800	-16.5	10.3
Other State Government	9,900	9,700	9,700	200	200	2.1	2.1
Local Government Education	24,100	23,700	24,200	400	-100	1.7	-0.4
Other Local Government	7,700	7,500	7,500	200	200	2.7	2.7

Source: Current Employment Statistics Program (CES) produced by the Economic and Labor Market Information Division, Vermont Department of Labor ([www.vtلمي.info/ces.cfm](http://www.vtلمي.info/ces.cfm)) in cooperation with the U.S. Bureau of Labor Statistics ([www.bls.gov/sae](http://www.bls.gov/sae)).

Estimates are preliminary and subject to revision. See Annual Summary for details.